

Picture taking with the

Anniversary Camera



EASTMAN KODAK COMPANY
ROCHESTER, N. Y., U. S. A.

SERVICE DEPARTMENT

ADDITIONAL ASSISTANCE FOR
MAKING BETTER PICTURES

ALTHOUGH we give in this manual the essential directions for using the camera it accompanies, there are amateurs who wish for further knowledge of photography.

The Service Department is at their service, *your* service.

Do not hesitate to call on us for information on any photographic subject.

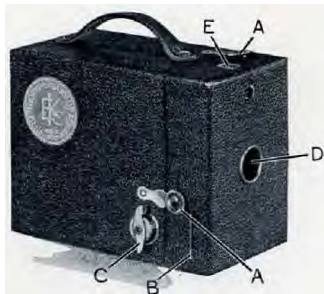
*We are at your service, write to us—
there is no charge, no obligation.*

Address all Communications
SERVICE DEPARTMENT
EASTMAN KODAK COMPANY
ROCHESTER, N. Y.

Picture taking with the Anniversary Camera

Published by
EASTMAN KODAK COMPANY
ROCHESTER, N. Y., U. S. A.

THE CAMERA



AA—Catches for locking camera
C—Winding Key
D—Lens Opening
B—Exposure Lever E—Finder

Caution: Prolonged exposure to direct sunlight might cause the colored covering of the camera to fade. Do not use alcoholic solvents for cleaning this camera.

IMPORTANT

BEFORE taking any pictures with your camera, and before loading it with film, read and follow these instructions carefully. Take especial care to learn how to operate the shutter.

While loading and unloading, be very careful to keep the protective paper wound tightly around the film to prevent the light striking it. The camera can be loaded or unloaded in daylight. This should be done in a subdued light, *not* in direct sunlight.

To LOAD

Use film number:
120 for the Anniversary
Camera



Draw out the winding key as far as it will come, turning it slightly.

Push over the two catches AA, see illustration on page 2.

Remove the roll holder F.



There is an empty spool in the recess on the winding side of the roll holder; this is to be used as the reel.

The winding side may always be distinguished by the round opening in the roll holder, directly behind the exposure lever



Insert the spool of film in the recess opposite the winding side, drawing out one of the spring grips just enough to permit the spool to drop into, place. Fit the spool pins into the holes at each end of the spool.

Important: The word "TOP" which is printed on the protective paper near the top of the spool must be next to the side of the roll holder, which has the round opening through which the key is inserted in the reel. If the cartridge is inserted the wrong way the protective paper will come between the lens and the film and no pictures could be made.



Remove the band that holds the end of the protective paper, and pass

the paper *over the rollers* and across the opening in the back of the roll holder.

Thread the paper through the longer opening of the git in the reel *as far as it will go*. Give the spool two or three forward turns to make the paper hold securely on the spool.



Be sure that the paper is started straight. Do not unroll too much protective paper or the film will be fogged and ruined.

Insert the roll holder in the outside box, so that the slotted end of the spool comes next to the winding key in the outside box.

Fasten the roll holder to the outside box with the two catches AA, see illustration on page 2.



Press in and at the same time turn the winding key until the web at the lower end of the key fits into the slot in the spool end.

Turn the key and watch the red window.

After a few turns, a warning hand will appear; then turn slowly until the figure 1 is in the center of the window.



Press in the winding key slightly, when turning it.

The film is now in position for the first picture. After each exposure be sure to wind the film, bringing the next number into position. This prevents making two pictures on the same section of film.

MAKING THE EXPOSURES "Snapshots"

HE Anniversary Camera is a fixed-focus camera, therefore, subjects that are about eight feet and farther from the camera will be sharp, and even those as near as six feet, while not as sharp, will be sharp enough for all ordinary purposes. Do not have the subjects closer to the camera than about six feet, without using a Kodak Portrait Attachment, see page 12.



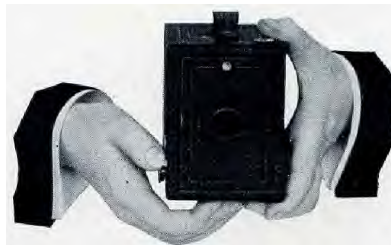
The shutter of the camera is released by pushing the exposure lever **B** (see illustration above) from one end of slot to the other with the thumb. Push the lever *slowly*, in *one direction*

only, and *as for as it will go*. If no "click" is heard no exposure is made.

Do not jerk the lever as any movement of the camera, at the instant of exposure, will blur the picture.

When making snapshots, the subject should be in the broad, open sunlight, but the camera must not. The sun should be behind your back or over the shoulder. If it shines directly into the lens it will blur and fog the picture.

1



Point the camera at the subject to be photographed and looking into the finder from directly over the center of it, include what you want and compose the picture by turning to the right or left, see page 10.

Only what is seen in the finder will show in the picture.



When making snapshots, hold the camera firmly against the body. When pushing the exposure lever, hold the breath for the instant. If the camera is moved during the exposure, the picture will be blurred.

MAKING THE EXPOSURE

Hold the camera steady and level, as shown in the illustrations, and push the exposure lever *once*, as far as it will go. *This makes the exposure.*

Important: The exposure lever must be pushed *slowly* to avoid jarring the camera. If the camera is not held steadily the picture will be blurred.

All exposures must be made outdoors with the subjects in bright sunlight, and during the hours from two and a half hours after sunrise until two and a half hours before sunset.

HOLD CAMERA LEVEL

The camera must be held level. If all of the subject cannot be included in the finder without tilting the camera upwards, move backwards until it is all included *with the camera held level*. See illustration on page 12.

If the subject is below the normal height, like a small child or a dog, the camera should be held down level with the center of the subject.



Effect produced by tilting the camera.

KODAK PORTRAIT ATTACHMENT

The Kodak Portrait Attachment makes large head and shoulder portraits. It can also be used for photographing flowers and similar subjects.

Place the Attachment in the lens opening and compose the picture in the Einder. *The subject must be exactly 3½ feet from the lens;* measure the distance carefully from the lens to the face.

Use *Kodak Portrait Attachment No. 1* with the Anniversary Camera.

KODAK DIFFUSION PORTRAIT ATTACHMENT

The Kodak Diffusion Portrait Attachment is a supplementary lens used in the same manner as the regular Kodak Portrait Attachment. By using this Attachment, portraits are made more artistic, due to the softening effect of diffusion.

Use *Kodak Diffusion Portrait Attachment No. 1* with the Anniversary Camera.

TURN A NEW SECTION OF FILM INTO POSITION



Press in the winding key slightly and turn it slowly until No. 2, or the next number, is in the center of the red window.

The warning hand appears only before section No. 1.

Turn the next section of film into position immediately after making each exposure; this prevents making two pictures on the same section of film.

REMOVING THE FILM

After all the exposures have been made, turn the winding key until the end of the protective paper passes the window. The film is now ready for removal from the camera.



In a subdued light, open the camera and remove the roll holder as shown on pages 3 and 4. bold the ends of the protective paper and the sticker together to prevent paper from loosening. If the sticker has been wound under the roll, revolve the spool to bring it up. Draw out the spring grip just enough to release the spool and lift out the roll of exposed film, as shown in the illustration above.

Fold under about half-an-inch of the protective paper, and fasten it with the sticker.

"Cinch" Marks: After removing the film from the camera, do not wind it tightly with a twisting motion, or the film might be scratched.

Wrap up the exposed film. It is now ready for development. This may be done by a photo finisher, or by yourself. If the latter is desired, you may write to our Service Department, mentioning the size of the pictures made with your camera, and we will send you a list of the necessary materials which can be purchased from a Kodak dealer.

Important: Film should be developed as soon as possible after exposure. The quality of the image on all sensitized products is retained by prompt development after exposure.

Remove the empty spool and place it in the recess on the winding side of the roll holder. The slotted end of the spool must show through the round opening in the roll holder.

It is a good plan to reload the camera as soon as an exposed film has

been removed, to be ready for the next pictures. Load the camera with Kodak Film.

Keep Dust Out of the Camera

Wipe the inside of the camera and roll holder occasionally, with a slightly damp cloth, especially if the camera has not been used for some time.

EASTMAN KODAK COMPANY,
ROCHESTER, N. Y.



k

PRICE LIST

KODAK N. C. FILM CARTRIDGE, No 120, for the Anniversary Camera, 23 x 33, six exposures	\$.25
KODAK PORTRAIT ATTACHMENT No. 150
KODAK DIFFUSION PORTRAIT ATTACHMENT No. 1	1.25
<i>KODAK SKI PIL</i> = No. 175
KODAK NEGATIVE ALBUM, to hold 100 x $\frac{3}{4}$ or smaller negatives	1.25
KODAK TRIMMING BOARD, No. 1, 5-inch75
KODAK DRY MOUNTING TISSUE, 24 x 34 three dozen sheets10
RHODES ALBUM, loose-leaf, cloth cover, 50 bis& leaves, size 5 x 8.90
Size 7 x 11	1.25
VELOX TRANSPARENT WATER COLOR STAMPS, booklet of twelve colors50
VELOX WATER COLOR OUTFIT, consisting of Artist's Mixing Palette, three Camel's Hair Brushes and one book of Velox Transparent Water Color Stamps (twelve colors)	1.00
"How TO MAKE GOOD PICTURES," an illustrated book of helpful suggestions. It describes various methods of making exposures, developing, printing, enlarging, coloring, making lantern slides and other interesting subjects50

Att Frites subject to change without notice.

EASTMAN KODAK COMPANY,
ROCHESTER, NEW YORK.

IMPORTANT

Read this manual thoroughly before you make any pictures.

White loading and unloading the camera, be very careful to keep the protective paper wound tightly around the film to prevent light striking it.

Before making an exposure be sure that an unexposed section of film is in position.

The sun must be behind your back or over the shoulder. If the sun shines directly into the lens it will blur and fog the picture.

Hold the camera *level*.

Hold the camera *steadily* when making the exposure. The camera should be held firmly against the body and when pushing the exposure lever, hold the breath for the instant. If the camera is moved during the exposure, the picture will be blurred.

Turn a new section of film into position immediately after making an exposure. This will prevent making two pictures on the same section of film.

EASTMAN KODAK COMPANY,
ROCHESTER, -N. Y.