

KODAK
CATALOGUE
1960



Kodak

CATALOGUE

This catalogue features selected items from the most comprehensive range of photographic equipment and supplies ever presented in Australia. Their inclusion, however, does not necessarily imply that all are readily available at any particular time.

INDEX

SENSITIZED MATERIALS

Film, Papers 4, 5, 50

CAMERAS

Brownie 6, 7
Brownie Movie 51
Cima 52
Emel 52
Flexaret 8
Kodak Junior 8
Retina, Retinette 10, 11, 12, 13
Rolleiflex, Rolleicord 9

PICTURE-MAKING ACCESSORIES

Cable Releases 16
Carrying Cases 15, 53
Exposure Meters and Guides 17, 53
Lens Attachments and Filters 16, 18, 19
Flash Equipment 16, 22
Floodlighting Equipment 20, 21
Photographic Lamps 23
Retina Accessories 14
Tripod and Tripod Heads 16, 53

PROCESSING ACCESSORIES

Chemical Mixing Plungers 26
Developing Dishes 27, 28
Developing Tanks 29
Film Clips 27
Forceps 27
Funnels 26
Glazers and Glazing Plates 30
Graduates 25
Photo-Hobby Outfits 24, 25
Pins, Darkroom 27
Printing Accessories 30
Safelight Lamps 26, 27
Thermometers 27, 28
Timers 27
Trimmers 30, 49

ENLARGERS AND ACCESSORIES

Foot Switches 31
Kodak Precision Enlarger 33
Kodak Projection Print Scale 31
Lenses, Enlarging 30
Lusca Enlarger 32
Masking Boards 31

PROJECTOR AND PROJECTION ACCESSORIES

Brownie Eight-58 Projector 54
Cine Reels and Cans 60
Cinevox Premier Projector 56
Fantax Projector 35
Kodachrome View Transparencies 40
Kodak Colour Prints 39
Kodak Merit Projector 35
Kodascope Eight-500 Projector 55
Kodaslide File Boxes 38, 39
Neo-Diafant Projector 35
Projection Stands 58
Screens, Screen Stands 36, 37, 57
Transparency Mounts and Frames 38, 39
Viewers 39
View-Master Viewers and Reels 41

ALBUMS, FRAMES, BOOKS

Albums 47
Colour Print Mounts and Frames 38
Frames 48
Photographic Books 46

COLOURING AND RETOUCHING, MOUNTING

Colouring Supplies 49
Retouching and Mounting Supplies 49

EDITING AND TITLING EQUIPMENT

Editors 59
Rewinders 61
Splicers 61
Titling Outfits 62
Titling Sets 62
Viewers 60

MISCELLANEOUS

Chemical Preparations 42, 43
Kodak Services 64
Kodak Super-Size Prints 2, 3
Kodascope Library, Subject Films 63

KODAK SUPER-SIZE PRINTS

Everybody likes good value, and surely this is it — big sparkling, twice-size snapshots, made by Kodak on modern automatic equipment, can be yours at no extra cost. For example, if your camera takes eight pictures on a 620 film you now have the choice of getting, for the same price, eight big prints $3\frac{1}{2} \times 5$ inches in size or contact type prints $2\frac{1}{2} \times 3\frac{1}{2}$ inches in size.

Why not have big, glossy Kodak Super-Size Prints made from your old negatives too? They're ideal for gifts and framing. Check the chart below for your film size.

PRICE: 6d. each.



Kodak Super-Size Print $3\frac{1}{2} \times 5$ ins.

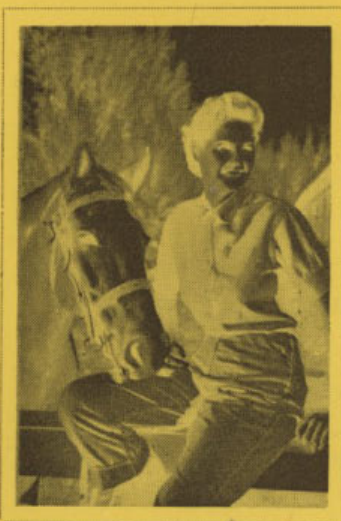
from these three negative sizes



Film No.:
135

Exposures:
36

Neg. Size:
24 x 36 mm.



Film No.:
127

Exposures:
8

Neg. Size:
 $1\frac{5}{8} \times 2\frac{1}{2}$ "



Film No.:
120 or 620

Exposures:
8

Neg. Size:
 $2\frac{1}{4} \times 3\frac{1}{4}$ "

Film No.:
127

Exposures:
16

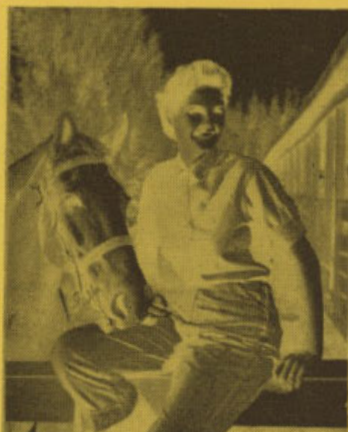
Neg. Size:
1½" x 1½"



Film No.:
120 or 620

Exposures:
16

Neg. Size:
1¾" x 2¼"



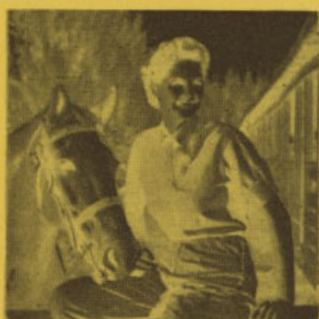
from these two
negative sizes

Kodak Super-Size Print 3½ x 4½ ins.

Film No.:
127

Exposures:
12

Neg. Size:
1⅝" x 1⅝"



Film No.:
120 or 620

Exposures:
12

Neg. Size:
1¾" x 2¼"



from these two negative sizes

**Kodak Super-Size Print
3½ x 3½ ins.**

Kodak Sensitized Materials

... are always fresh and dependable because they're made in Australia especially to suit all Australian conditions.



Verichrome Pan Film

A fast panchromatic film that enables you to take better-than-ever pictures, whether in bright sunshine, on cloudy days or indoors, and at night by flash. ("Pan" means panchromatic — faster and more sensitive to colour and tone values in black-and-white pictures.) It is especially suitable for box-type Brownies and the simpler folding-type cameras. Of popular above-average speed (ASA Indexes: daylight 80; tungsten lighting 64), Verichrome Pan possesses a remarkable latitude which helps to soften harsh shadows caused by glaring sunlight, to yield brighter, clearer snaps made on cloudy days, and to show crisper detail and image quality in flash pictures. Available in all standard roll-film sizes except 35mm. Exposure: Average subject in sunlight: f/11, 1/100 second.

Tri-X Pan Film

Combines exceptional speed with complete colour sensitivity — thus making it the obvious choice of advanced enthusiasts seeking "the best". Its ASA daylight-exposure index is a conservative 200. This means that the film can readily be used, without supplementary flash or flood illumination, for indoor snapshots by available light, night sporting events, without flash, and fast-action pictures on very dull days outdoors. The exposure and development latitude of Tri-X is exceptional — considerable over- or under-exposure can be tolerated and excellent prints still obtained. Tri-X is available in 135, 127, 620, 120 and 828 roll film sizes and 520, 518, 523 and 541 in film pack. Exposure: Average subject in sunlight: f/16, 1/200 second.

Panatomic-X Film

Panatomic-X is a microscopically fine-grain film possessing extremely high "resolving power", superior acutance (less "light scatter" between the silver crystals), and an ultra-thin emulsion. In addition, it has an ideally balanced panchromatic sensitivity which means a better exposure latitude, a wider tonal range with no blocked highlights or blank shadows, and an improved operating speed. It has an ASA exposure index of 25 daylight and 20 tungsten. The ultra-thin emulsion drastically cuts development and drying times — negatives can be printed or enlarged about half an hour from commencement of developing process. Available in 35mm. size in 36-exposure cassettes. Exposure: Average subjects in sunlight: f/11, 1/50 second.

Kodachrome Film

Available in sizes K135 and K828, Kodachrome yields colour transparencies which may be viewed directly or projected in large size on the home screen. It requires no extra equipment for taking. Regular Kodachrome is for pictures outdoors in sunlit hours, and Type "A" is for use with ordinary photoflood and flash lamps. The price includes processing and mounting the 24 by 36mm. transparencies as standard Kodaslide ready to fit any 2 by 2in. projector for home projection. A special service is available whereby duplicate Kodachrome transparencies can be made, if and when required. The Kodak Colour Print Service has made it possible for users to obtain handy album-size enlargements in full colour from suitable Kodachrome transparencies.

Ektachrome Film

A fast reversal type colour film balanced for exposure in sunlight. Ektachrome may also be used at night with blue flashbulbs or with corrective filters. Available in two speeds, Ektachrome E135 ASA 32 and High Speed Ektachrome EH135 ASA 160.

Ektachrome may be processed at home with an Ektachrome processing kit or may be processed by Kodak — in the case of the latter, films are returned as mounted 2 x 2 inch transparencies. Ektachrome prices below do not include processing.

PRICES OF KODAK FILM (IN ROLLS)

VP VERICHROME PAN — 127, 3.6d.; 620 and 120, 3.9d.; 616 and 116, 4.7d.; 122, 6.3d.

FX PANATOMIC X — 135mm. 36 exposure, 11.8d.

TX TRI-X PAN — 127, 4.4d.; 620 and 120, 4.7d. 135mm. 36 exposure, 11.8d.; 828, 4.7d.

K KODACHROME — 135mm. 20 exposure, 40.0d. 135mm. 36 exposure, 60.0d.; 828, 23.0d.

(prices include processing)

E EKTACHROME — 135mm. 20 exposure, 24.0d.

EH HIGH SPEED EKTACHROME — 135mm. 20 exposure, 31.0d.

Bromide Paper

The Kodak Bromide Paper range gives the photographer a wide choice of paper surfaces and base tints enabling him to choose the combination and physical appearance which best suits his subject material. These characteristics, together with the wide contrast range, mean that he can select a paper precisely suited to the negative contrast with which he works. Uniformity of image tone throughout all grades of contrast is a fact attractive to the photographer who finds himself using various Bromide papers to cover the variety of his work. Uniformity of handling and maximum versatility in processing and general handling make Kodak Bromide Papers the natural choice for the bulk of photographic printing. Available in a wide range of surfaces and contrasts in single and double weight, and in sizes from 2½ to 3½ to 16 x 20in.

Bromesko Paper

Kodak Bromesko Paper has been designed as a specialist paper for truly distinctive pictorial, exhibition, or studio work. It gives fine quality prints with a characteristic charm—a charm produced by full rich gradation in sparkling highlights and translucent shadows. It is not an ordinary bromide emulsion; it has been devised to possess its special qualities and only personal experience can inspire due appreciation of these. Some of its best characteristics are: its exceptionally long scale of gradation which enables it to render perfectly all the delicate tonal modelling of a good portrait negative; its rich deep-blacks and clear highlights; and its great development latitude with attendant gain in print uniformity and reduction in the number of reject prints. Produced in two degrees of contrast and in an extensive range of textures and surfaces. Available, double weight only, in a wide range of sizes.

Velox Paper

Velox is the ideal contact printing paper for printing your own snapshots at home. Four degrees of contrast make it ideal as a medium for making prints from a variety of negatives of different degrees of contrast. The tone of Velox is blue-black which is uniform through all degrees of contrast, and equally uniform for a range of development times. Available in glossy in a wide range of contrasts to suit all negatives. Marketed in 25 and 100-sheet packets in sizes from 1½ x 2½ to 3½ x 5½ in.; and 10 and 100-sheet packets in 4½ x 6½ in. and 6½ x 8½ in.

PRICES OF KODAK PAPERS

Size	Velox & Bromide Single Weight		Bromide & Bromesko Double Weight	
	10 sheets	25 sheets	10 sheets	25 sheets
1½" x 2½"	—	2.6	—	—
2½" x 2½"	—	2.11	—	—
2½" x 3½"	—	3.9	—	4.2
2½" x 4½"	—	5.0	—	5.10
3½" x 4½"	—	5.10	—	6.8
3½" x 5½"	—	7.11	—	8.9
4½" x 6½"	5.0	—	5.10	—
6½" x 8½"	8.9	—	10.5	—
8" x 10"	12.11	—	15.0	—
10" x 12"	19.2	—	22.1	—
12" x 15"	28.4	—	32.11	—
16" x 20"	50.5	—	58.4	—

EXPOSURE INDEXES FOR KODAK FILM

For Daylight

	BS	ASA	WESTON*	DIN
VERICHROME PAN	30°	80	64	20/10
TRI-X PANCHROMATIC	34°	200	160	24/10
PANATOMIC-X	25°	25	20	15/10
KODACHROME	21°	10	8	11/10
KODACHROME TYPE A	21°	10	8	11/10
EKTACHROME	26°	32	24	16/10
HIGH SPEED EKTACHROME	33°	160	125	23/10

When using Kodachrome Type A in daylight a Kodak Wratten Filter No. 85 must be used.

For Artificial Light

	29°	64	50	19/10
VERICHROME PAN	29°	64	50	19/10
TRI-X PANCHROMATIC	33°	160	125	23/10
PANATOMIC-X	24°	20	16	14/10
KODACHROME	18°	5	4	8/10
KODACHROME TYPE A	23°	16	12	13/10

Kodachrome Daylight Film should be used in emergency only. In this case a Kodak Wratten 80B Filter must be used.

*Weston III meters operate on new Weston Indexes which are the same as ASA.

World-Famous Brownie Cameras . .



BROWNIE FLASH II

The whole family can use this exciting box camera, it's so simple and easy to operate. You can take flashsnaps, too, anywhere, day or night, by simply attaching the Brownie Flashholder. The high quality Kodet lens ensures a bright, sharp picture every time you press the button — and there is a built-in portrait lens for close-ups at five feet. The dependable Kodak rotary shutter has instantaneous and brief-time settings and is coupled to a modern push button release designed to minimise the possibility of camera movement. The Flash II is finished in smart black leatherette and has two large viewfinders for horizontal and vertical pictures. It loads with Kodak 620 film for eight pictures.

PRICE: £33.9

BROWNIE 127

A smartly designed up-to-the-minute snapshot camera that is simple and dependable in use. It has an all-moulded body in glossy black plastic, smart etched-metal nameplate, large built-in optical eye level viewfinder, dependable fixed focus Kodak lens, modern push-button shutter release, and strong neck cord. Loads with Kodak 127 film for eight pictures.

PRICE: £1.15.9



BROWNIE STARFLASH

Latest addition to the world famous Brownie family. Just right for picture taking anytime, anywhere. Enclosed optical eye-level finder shows picture subjects big and clear. Its flash reflector and battery case are built in — an integral part of the Brownie Starflash Camera. Uses low cost capless flashbulbs; requires only 2 Eveready 915AA Batteries. Handy exposure guide on back of camera shows correct subject distances for flash using Kodak Films.

Other outstanding features include: Double exposure prevention device; can be used with or without flash; easiest film loading ever; available in smart black plastic. Loads with Kodak 127 film.

PRICE: £4.17.6





BROWNIE FLASH II CAMERA OUTFIT

A complete ready-to-use hobby outfit for taking pictures by flash as well as by daylight — superbly set up in a modern presentation pack, an ideal gift for any occasion. Comprises the famous Brownie Flash II Camera, Brownie Flashholder, two batteries (type 915), five capless flashbulbs, two Kodak 620 films, and complete instructions for use. All you have to do is load the camera with one of the films provided in the outfit, insert the two batteries, screw the Flashholder on to the camera by means of the knurled screw, insert

a flashbulb and you're ready to go — ready to take economical flash pictures anytime, anywhere. When you press the camera exposure button the flash fires automatically at the right instant and provides all the light you want, where you want it, to ensure crisp, bright pictures. Of course, the Brownie Flash II Camera can be used out of doors in sunny conditions (without the Flashholder attached) in the normal way.

PRICE: £5.10.0

Kodak Junior Cameras

Model I:

The lightest, smartest, most inexpensive folding camera on the market. It has a Kodak single meniscus 105mm. lens giving sharp pictures from 8 ft. to infinity; Kodette III shutter for brief-time and instantaneous exposures; plunger-type release and built-in socket for cable release streamlined leatherette-covered metal body; optical eye-lever viewfinder; rigid self-erecting struts, tripod socket and plastic carrying strap. Weight 17 ozs. Loads with Kodak 620 film for eight pictures.

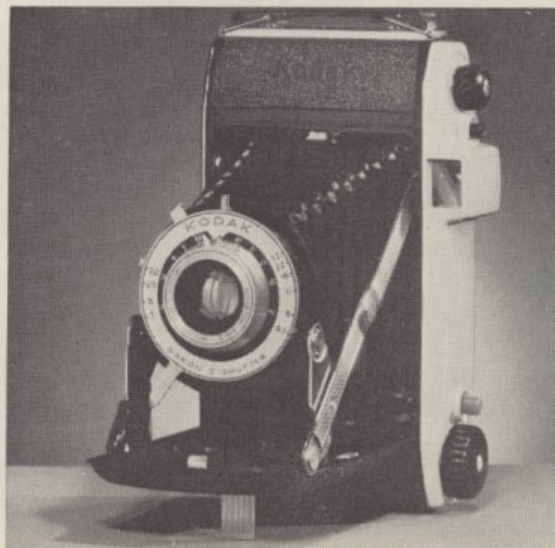
PRICE: £7.3.4



Model II:

An inexpensive yet elegant-looking camera that will take large crystal-clear pictures. The Kodak Junior II has all of the features of the Junior I plus: "Lumenized" 105mm. Kodak Anaston f/6.3 lens with apertures to f/32, and focusing from 4 ft. to infinity; Dakon shutter with pre-setting lever and speeds of 1/25, 1/50 sec.; flash-synchronised for use with Kodak Flashholder; depth-of-field scale built into the lens mount; spring-loaded spool chambers for easier loading. Loads with Kodak 620 film for eight pictures.

PRICE: £10.5.0



Flexaret Model V

The new up-to-date reflex camera that takes both colour (20-exposure Kodachrome 135 film) and black-and-white (12-exposure Kodak 120 film or 36-exposure Kodak 135 film). It is fitted with a sharp-cutting Meopta Belar 80mm. f/3.5 coated lens for clear definition and fine tonal separation, while its flash-synchronised Prontor SVS shutter has speeds of 1, 1/2, 1/5, 1/10, 1/25, 1/50, 1/100 and 1/300 sec., plus "brief time" and a built-in delayed action device. The Flexaret's acceptance of 35mm. film is a masterpiece of modern camera design — a special adapter (comprising take-up spool, pivots, and masks) simply fits into the back of the camera, while provision is made for automatic counting, viewfinder masking, type of film indicator, etc. Other outstanding camera features are: double-exposure prevention; automatic exposure counting; built-in magnifying lens; eye-level viewfinder; depth-of-field scale, etc.

PRICE: £33.5.0

Rolleiflex famous-name reflex cameras

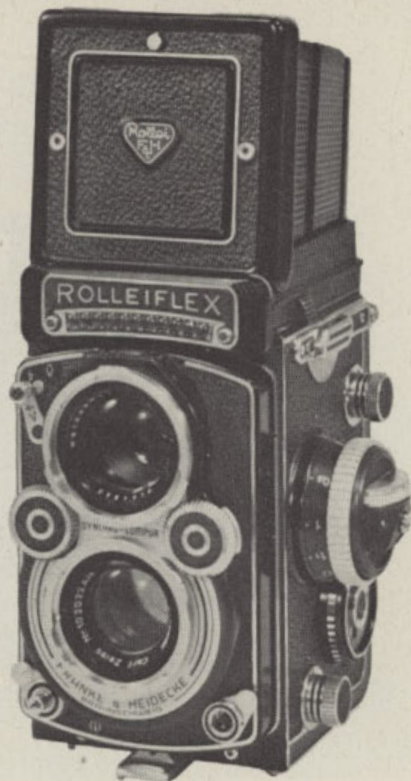
Rolleiflex and Rolleicord cameras — prized by millions of enthusiastic owners the world over for their outstanding quality and precision craftsmanship.

Rolleiflex:

Many models are fitted with a built-in photo-electric exposure meter for use with both reflected and incident light; Synchro-Compur shutter flash-synchronised for all types of flash and with speeds from 1 to 1/500 sec. and "B"; dual back for 12 pictures (2½ by 2½ in.) or 36 pictures (24 by 36mm.) using a Rolleikin accessory. Other outstanding features are: folding focusing hood for reflex or direct viewing; magnifying lens; automatic parallax compensation; accurate positive focusing; automatic depth-of-field indicator; automatic film winding, counting, and shutter setting; double-exposure prevention; click-stop shutter indicator; light values scale; self-timer; lens cap; cable release and carrying case.

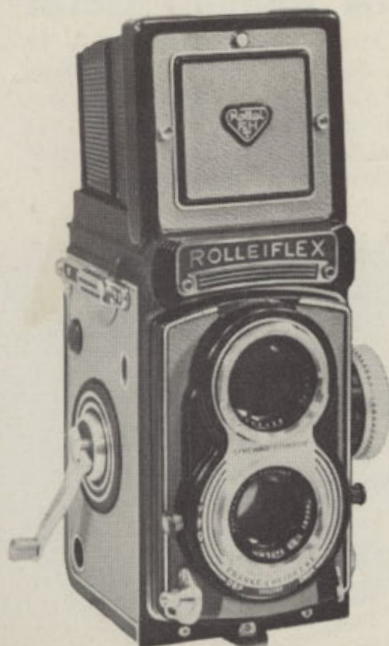
Rolleicord Va:

A fast high-performance reflex camera designed to meet the needs of the advanced amateur photographer. Fitted with a Synchro-Compur shutter with speeds from 1 to 1/500 sec. and "B". This new model Rolleicord Va features interchangeable counting devices and masks to permit the use of 35mm. Kodachrome colour film as well as the standard 120 black-and-white film for 12 (2½" x 2½") or 16 (1½" x 2½" or 1½" x 1½") exposures. In addition, it possesses most standard features of the Rolleiflex except the built-in exposure meter.



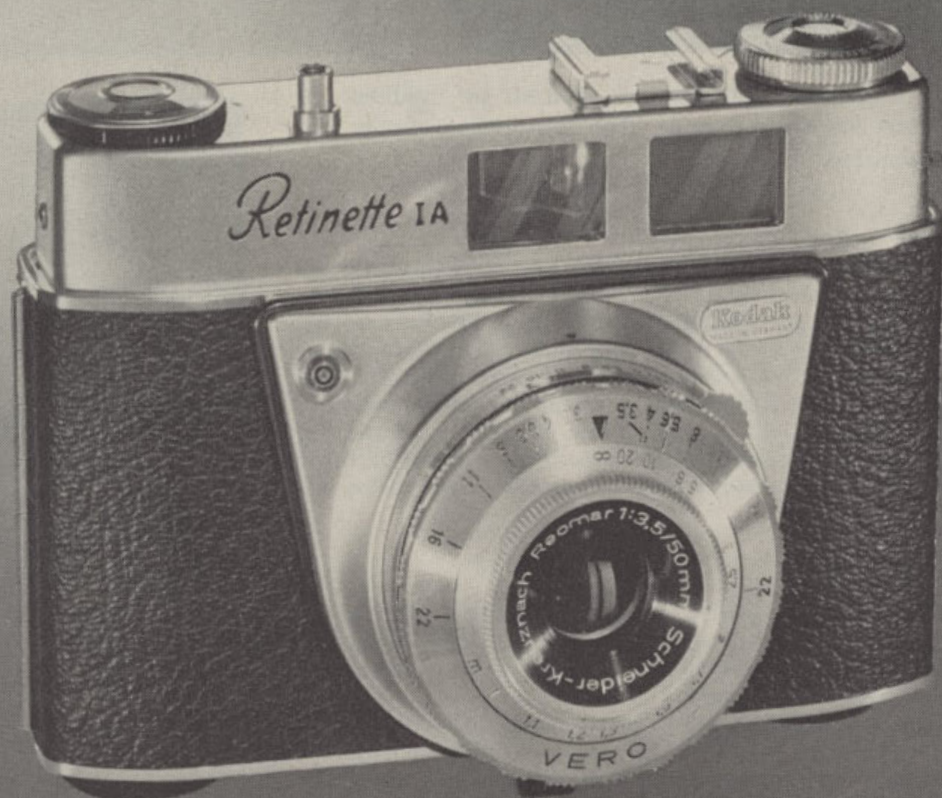
The Rollei System:

A most comprehensive range of Rollei accessories is also available to form a very efficient well-integrated system of reflex photography. The range comprises: Extension focusing hood; lens hood; Rolleigrid lens (for better viewing in poor light); Rolleifix tripod head; Rollei desiccant cartridge; leather carrying cases (for cameras as well as lens attachments); Rollei filters (for black-and-white photography); Rolleipol filters (light polarising); Rollei colour conversion filters (for colour photography); Rolleinar close-up lenses; Rolleisoft diffusing lenses; Rolleimeter (optical rangefinder); Rolleimarin (for housing Rolleiflex f/3.5 for underwater photography); panorama tripod head; Rolleikin 35mm. film adapter; plate adapter; and Rolleiflash.



PRICES: Rolleicord Va, with f/3.5 75mm. Xenar lens and Synchro-Compur CRMXV shutter, without case	£48.5.0
Rolleiflex 4 x 4, with f/3.5 60mm. Xenar lens and Synchro-Compur CRMXV Shutter, without case	50.12.0
Rolleiflex, with f/3.5 75mm. Planar lens, with meter and Synchro-Compur CRMXV shutter without case	116.18.0
Rolleiflex with f/2.8 E2 80mm. Planar lens, with meter and Synchro-Compur CRMXV shutter, without case (Illustrated Above)	119.15.0
Rolleiflex "T" with 75mm. f/3.5 Zeiss Tessar lens, without meter or case	63.10.0
(Illustrated Left)	

KODAK *Retinette* cameras...



RETINETTE IA

Undoubtedly the best 35mm. camera value ever to come out of Germany — combines precision with simplicity at a price that is truly sensible and within the reach of all. It is fitted with a fast colour-corrected three-element 50mm. Schneider-Reomar $f/3.5$ lens and four-speed Vero shutter (1/30, 1/60, 1/125, 1/250 and "B"). One of its most interesting features is the large clear viewfinder with its bright-line frame. Your exact picture area is shown within the frame while the surrounding area is still visible — a great help when composing the picture particularly with colour film which has certain limitations for trimming the final transparency. Indication marks on the bright-line frame also enable correction to be made for parallax. Furthermore this frame is a great boon to spectacle-wearers. Other popular Retinette IA features are: Built-in flash contacts; automatic film counter; lever wind; focusing from $3\frac{1}{2}$ feet to infinity; depth-of-field indicator; accessory shoe; all-metal construction with smart black leatherette and satin-chrome finish. Accepts all 20 and 36-exposure magazines, black-and-white or colour.

PRICE: £14.5.0 (case extra)

Retinette IA Camera Outfit

Complete outfit for 35mm. colour photography — by flash or by daylight. Contains famous Kodak Retinette IA Camera with $f/3.5$ lens and shutter to 1/250 sec., always-ready leather case, Brownie Flashholder and Kodak Flash Adapter, flashbulbs, batteries, Kodachrome Film, Kodaslide Pocket Viewer and instructions.

PRICE: £22.10.0



RETINETTE IIA

The latest, and probably the most unique member of the famous Retinette range — representing as it does a further step towards automation in photography. It's the ideal choice for those who want to take good pictures without the worry of "having to learn a lot about photography." So easy too — the built-in photo-electric meter does the work for you. Here's how: Set the camera to the speed of the film you are using as you aim the camera at the subject, the meter automatically measures the light; then, simply rotate the large shutter ring until the moving pointer in the bright-line frame viewfinder reaches the marked central position; then press the button. No shutter speeds or lens apertures to worry about — they are adjusted automatically. The Prontormat shutter, with separate "daylight" and "flash" settings only, ranges between 1/30 and 1/300 sec. Focusing is also made easy with the automatic depth-of-field indicator. The Retinette IIA is fitted with a three-element colour-corrected 45mm. Schneider-Reomar f/2.8 lens. In addition, it has all the regular features of the Retinette IA camera.

PRICE: £31.5.0

RETINA IB

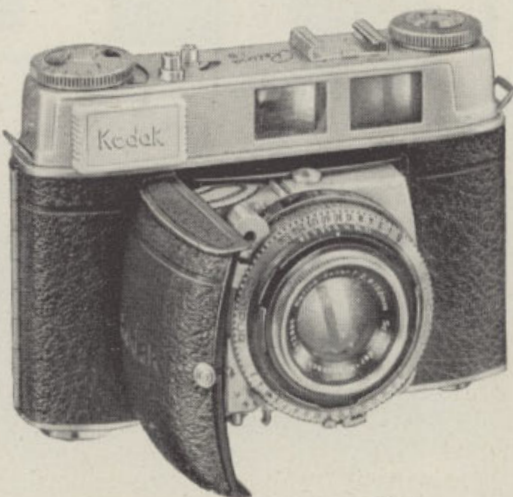
One of the world's best-sellers in precision 35mm. cameras — a handful of picture-making craftsmanship that folds up into a flat handy camera that is inconspicuous yet speedy in use. It is fitted with a colour-corrected four-element 50mm. Retina-Xenar f/2.8 lens, the famous 10-speed Synchro-Compur shutter with speeds ranging from 1 to 1/500 second and "B", a built-in photo-electric meter with particularly fine adjustment, and a large-image viewfinder with bright-line frame for accurate composing of the picture. In addition it features: a coupled shutter-speed and lens aperture system; exposure-value settings; built-in self timer; plus all the regular qualities of the famous Kodak Retina cameras.

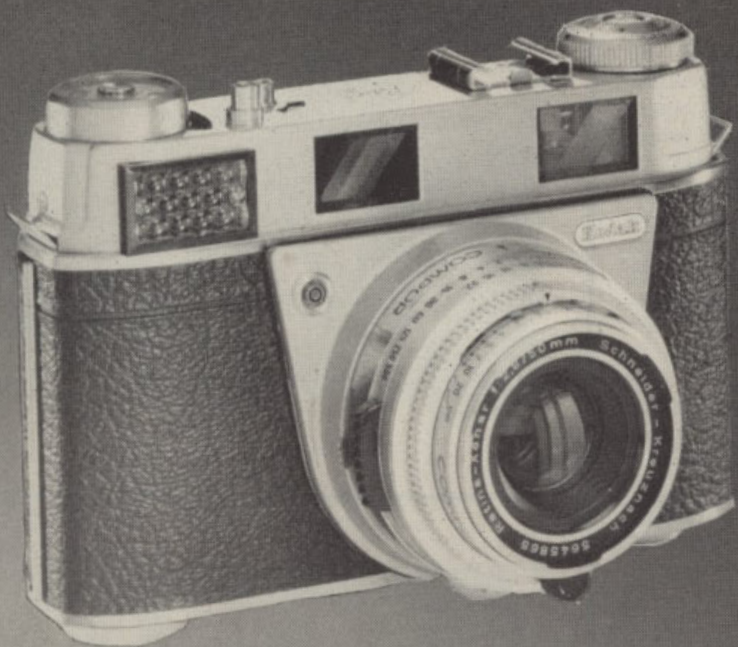
PRICE: £36.18.0

RETINA IIIC

The aristocrat of the Retina "flat" cameras — like the Retina IB, it folds up. The lens is retracted into the body of the camera so that, when not in actual use, it is perfectly protected from the dangers of dust, moisture and scratches. Add to this its amazing versatility for accepting interchangeable lenses and you have the foundation of a camera system second to none. It is fitted with a fast six-element colour-corrected 50mm. Retina-Xenon f/2 lens, the front element of which may be interchanged with additional lenses to form either a 35mm. wide angle lens or an 80mm. telephoto lens. The famous 10-speed Synchro-Compur shutter is built into the lens mount and is used with all lens combinations. The large coupled viewfinder/rangefinder has bright-line image frames of three focal lengths, showing at a glance the field of view for each lens. In addition the Retina IIIC has a built-in photo-electric exposure meter, coupled shutter-speed and lens-aperture setting, plus all the regular Retina features

PRICE: £63.15.0



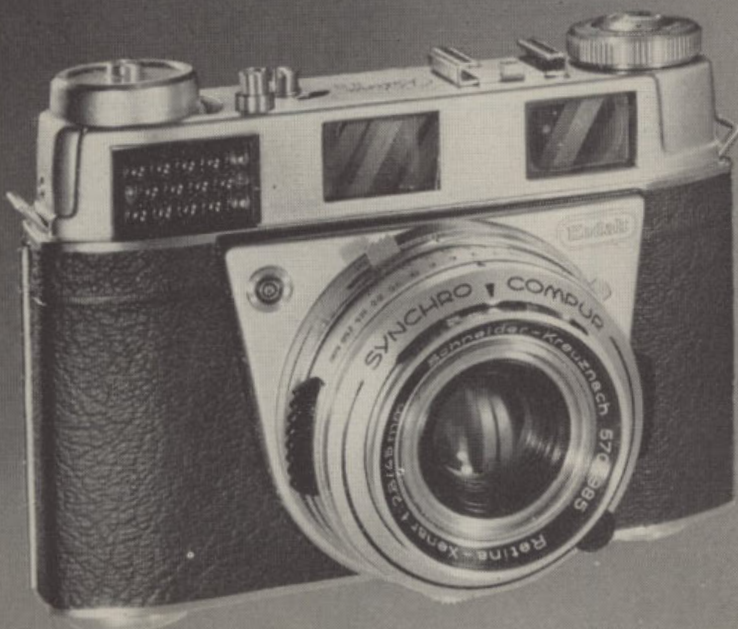


RETINA IIS

A masterpiece of camera precision with a picture-making technique that is easier than you have ever dared to imagine. No expert knowledge needed — simply aim the camera at the subject, rotate the setting wheel underneath the camera to superimpose the two pointers of the exposure meter (this automatically sets the correct aperture for the shutter speed in use), and press the button. No complicated calculations to make — the meter does it for you. Focusing is also made easy with the built-in coupled rangefinder which enables you to set the distance exactly while viewing the subject in the viewfinder. Its features include: colour-corrected four-element 45mm. Retina-Xenar f/2.8 lens; automatic exposure control; 10-speed Synchro-Compur shutter with automatic depth-of-field indicator; coupled large-image viewfinder-rangefinder with bright-line frame; flash contacts, built-in self timer; rapid winding lever; lock to prevent double exposure. Complete with imported always-ready case.

PRICE: £53.7.6

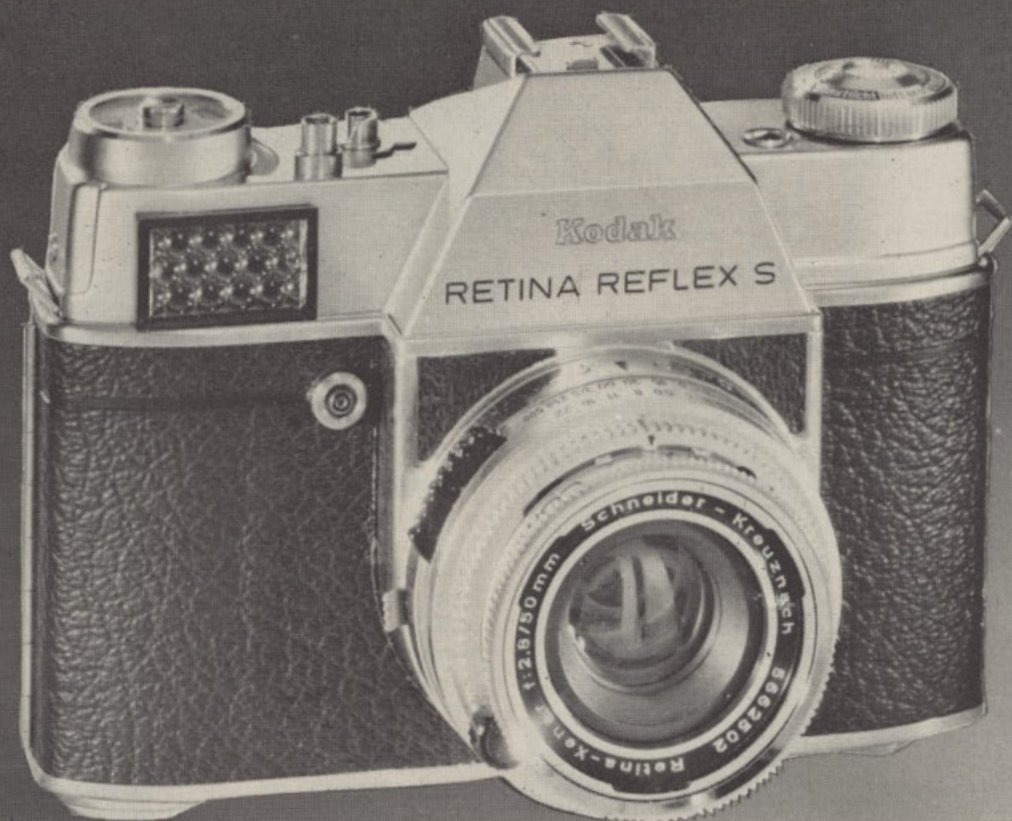
KODAK *Retina* cameras...



RETINA IIIS

Simply superb — it does your thinking for you, yet it has the widest possible versatility to make it the choice of the connoisseur. It incorporates all the technical features of the Retina IIS yet provides for the interchange of additional lenses from the 28mm. super wide-angle to the 135mm. telephoto. Here is true versatility that will cover everything from telephoto to ultra close-ups, from document copying to photomicrography, from right-angle shots to fast sports shots. Here are its outstanding features: Fast colour-corrected four-element 50mm. Retina-Xenar f/2.8 lens; 10-speed Synchro-Compur shutter; automatic depth-of-field indicator; full flash synchronization; built-in exposure meter with automatic exposure control; large-image viewfinder with automatically reflected bright frames for lenses from 35mm. to 135mm. focal length; automatic parallax compensation for all focal lengths; coupled rangefinder for focal lengths from 28mm. to 135mm.; plus all Retina IIS features. Complete with imported always-ready case.

PRICE: £67.7.6



RETINA REFLEX S

Finest Kodak Retina Camera ever made — supreme in optical and mechanical engineering, sensitive in styling, exacting in craftsmanship. It's a camera you'll use and show with pride . . . a camera that combines all the most wanted features in 35mm. photography. Check these: Fast colour-corrected four-element 50mm. Retina-Xenar $f/2.8$ lens which is completely interchangeable with lenses from 28mm. to 135mm. focal length; built-in photo-electric meter gives automatic exposure control (same as Retina IIIS); direct reflex

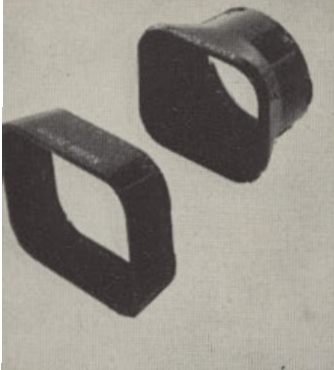
viewing through the lens shows full-size image free of parallax (with all lenses); coupled split-image range-finder for precision focusing even in dim light; 10-speed Synchro-Compur shutter with automatic depth-of-field indicator (accepts electronic flash at all speeds); automatic pre-set diaphragm action permits focusing at full aperture; built-in self timer; double-exposure prevention; lever wind. With imported always-ready leather case.

PRICE: £87.5.0

The Retina System

Your new Kodak Retina Camera is more than just a camera. The name "Retina" includes a complete family of aids — each one engineered specifically for precision Retina cameras and designed to keep pace with your photographic interests. They add up to a system which grows as your skills and interests grow. For instance, there's the full range of superb interchangeable lenses to extend your picture-making into the fascinating fields of telephoto and wide-angle photography; there's a variety of special lenses, rangefinders, camera

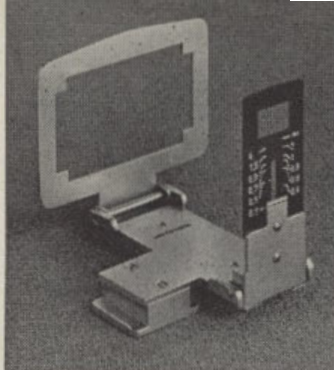
stands, etc., for close-up work — extremely useful for small-object specimen and nature photography, copying of documents, medical and industrial records, etc.; there are special viewfinders for fast action and right-angle shots; there's a special adapter kit for photomicrography; plus a wide range of filters, lens hoods, etc. In short, the Retina system keeps you and your photography right up to date so that "you will never outgrow your Kodak Retina Camera."



Retina Lens Hood

The rectangular shape of the lens hood for the Retina range of cameras is particularly effective in screening off disturbing reflections. It is firmly fixed in front of the standard lens of the camera by means of a bayonet mount.

PRICES: Standard lens, 15/3



Retina Frame Finder

Specially designed for shooting moving subjects and quick-changing scenes such as sports pictures. In two models to suit standard and telephoto lenses — both have parallax compensation down to a taking distance of 12in. and thus can be used for close-ups with supplementary lenses.

PRICE: £2.11.3

KODAK RETINA ACCESSORIES



Retina Interchangeable Lenses — Series S

Designed to give an immense new scope to your Retina IIIS or Retina Reflex S. These new lenses replace the complete lens assembly to provide an efficient and perfectly matched unit for your camera. When in use with a Retina IIIS they provide a reflected brilliant frame in the finder to show the correct field corresponding to the lens fitted. When in use with a Retina Reflex S the "through the taking lens" viewfinder shows the exact picture area. Lenses available are:

Standard Lens: 50mm. f/2.8 Retina Xenar or Retina Ysarex; 50mm. f/1.9 Retina Xenon or Retina Heligon.

Telephoto Lens: 85mm. f/4 Retina Tele-Arton or Retina Rotelar; 135mm. f/4 Retina Tele-Xenar or Retina Rotelar.

Wide Angle Lens: 35mm. f/4 Retina Eurygon or 35mm. f/2.8 Retina Curtagon and 28mm. f/4 Retina Curtagon. Also available are a wide range of interchangeable lenses to fit Retina IIC, IIIC and Reflex cameras. Prices on application.

Retina Micro-Adapter

Joins camera and microscope together to form an excellent unit for photomicrography. Incorporates semi-reflecting prisms, plus a monitoring eye-piece to allow visual focusing, depth-of-field control, as well as inspection during exposure. The scale of reproduction is one-fifth of the visual image.

PRICE: £21.17.6

Retina Close-Up Rangefinder Kit

Extends focussing down to 12 in. Kit consists of a super-imposed type of rangefinder combined with a parallax-correcting viewfinder, two supplementary lenses, and a case. Once the object is sighted the finder is adjusted until the two outlines fuse into one.

PRICE: £12.15.0



Retina Copying Stand

Is a lightweight collapsible stand for copying books, documents, etc., up to 11½ x 8½ in. Must be used in conjunction with the N2 supplementary lens. Provision has been made for the fitting of supplementary lighting.

PRICE: £11.11.0

Retina Table Stand

Designed especially for accurate close-up work — excellent for use with the Close-Up Rangefinder (and N lenses) or the Close-Up Attachment (and R lenses). Has rigid base, telescopic column, ball-and-socket head, and a right-angle head.

PRICE: £16.17.3

Retina Close-Up Attachment

Together with its supplementary R lenses this attachment employs the focal-frame method of close-up photography of tiny subjects at distances of 6 to 11 inches. Four different sizes of subject areas covered by R lenses are: 4 x 6 in.; 3 x 4 in.; 2 x 3 in.; and 1½ x 2 in.

PRICE: £6.9.6

Retina Stereo Attachment

Can be fitted to the standard lens of the Retina IIC or IIIC in a matter of seconds, making the camera "see" in three dimensions. It records two vertical images on a standard 35mm. frame which, when viewed, are three dimensional and amazingly life-like.

PRICE: £23.0.3

Your valuable camera deserves the protection of a KODAK LEATHER CARRYING CASE



Left:

BOX TYPE: Add years to the life of your box Brownie camera by protecting it from dust, moisture, shocks, etc., with one of these sturdy carrying cases. Made of top-quality processed leather to last a lifetime. With carrying straps and metal catch.

PRICES: Six-20 Brownie; Pig Skin £1.0.0;

Centre:

SLING TYPE: Designed and constructed to take the hardest knocks, these carrying cases are made from quality processed leather, and are fitted with a sturdy metal clasp and two strong leather

carrying straps. For Kodak Junior and similar folding-type cameras.

PRICES: All models, £1.9.6.

Right:

ALWAYS-READY TYPE: Smart, convenient and safe — tailor-made to fit the camera. Simply open the flap and operate the camera without removing it from the case. Expertly finished in finest quality processed leather. With adjustable straps and strong metal catch.

PRICES: Kodak Retinette £3.0.0; Kodak Retina £3.10.0; Flexaret £4.1.9.

Brownie Gadget Bag

A handy inexpensive gadget bag for all your photo equipment. Made from durable leather and finished in light tan it has a strong leather shoulder strap, a full-length zip fastener and metal stud feet for longer life. (Midget model also available, 12/-.)

PRICE: £1.15.0

Kodak Senior Shoulder Bag

Finished in soft natural tan; contains movable compartments for camera, meter, etc., while inside the lid is a zippered pouch for filters, etc. Has a buttoned-in soft chamois for last-minute cleaning. Dimensions, excluding exterior pouch, 8½ in. x 6½ in. x 4½ in.

PRICE: £8.2.6

Kodak De Luxe Shoulder Bag

Made from solid hide that provides safety and protection for camera, accessories, etc. Has adjustable interior compartments, cleaning chamois, large outside pouch, zippered interior pouch, adjustable padded shoulder strap. Dimensions 11½ in. x 5 in. x 7½ in.

PRICE: £5.11.6

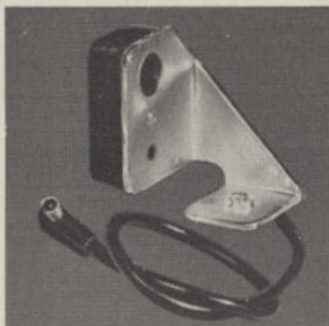


Aids to Better Picture Making...

Kodak Universal Flash Adapter

Combines with the inexpensive Brownie Flashholder to form a synchronized flash unit for use with most 35mm. cameras such as the Kodak Retinette. It slips into the accessory shoe on the camera.

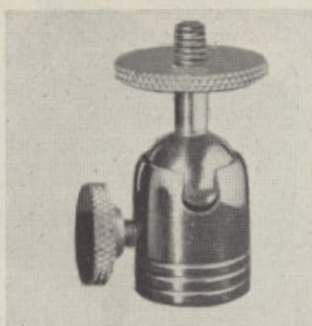
PRICE: 12.6.



Barton Ball-and-Socket Tripod Head

The ball-and-socket head enables the camera to be tilted to almost any angle, thus facilitating subject selection and avoiding camera shake.

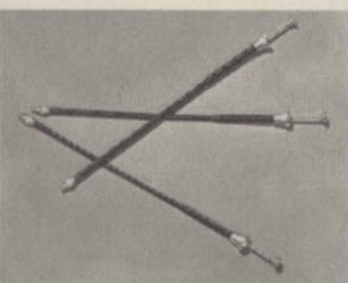
PRICE: 15.6.



Braided Cable Releases

A 'must' for time exposures — their use minimises camera shake, and makes for better pictures. Various lengths and threads.

PRICES: 3½ in., 4.4; 6 in., 5.3; 9½ in., 6.1.



Austral Lens Cleaning Tissue

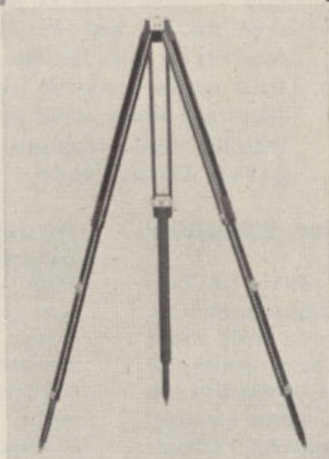
Finest quality white velvety-soft tissue that will not damage the surface. In books of 10 sheets.

PRICE: 6d.

Zenith 3-Section Tripod

Zenith's screw collar-lock system enables the extension legs to be tightly gripped so that the tripod height covers an extension range of 19 to 44in. from floor level; folds up into 21in. Has solid aluminium head, spiked tips, standard thread, plastic strap. Weight 1½ pounds.

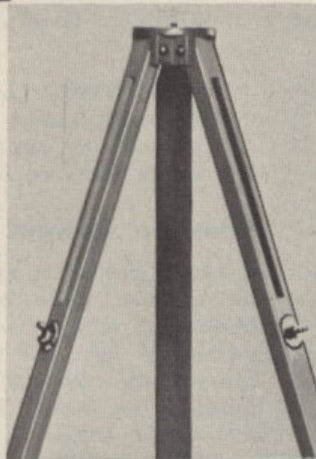
PRICE: £5.5.0.



Zenith 2-Section Tripod

(Illustration shows top only.) Can be adjusted so that the tripod head can be used at any height between 26½ and 47½in. from floor level. Folds up into 27½in. In smart natural wood finish. Weight 1½ pounds. Otherwise, similar to 3-section model.

PRICE: £3.1.3.



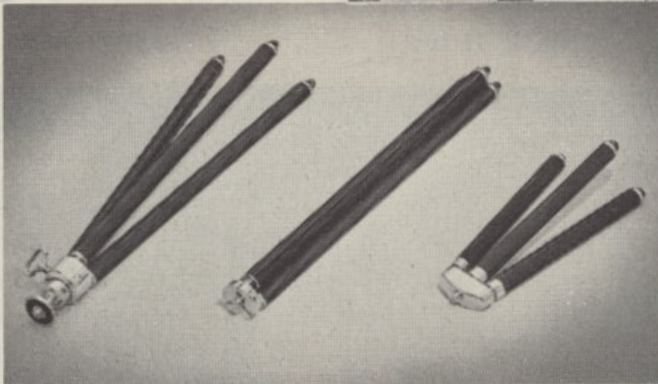
Rowi Tripods

Rowi Roundax (close right): A sturdy, lightweight seven-section tripod constructed in quality brass. Reliable ball-and-socket head permits the camera to be tilted at any angle. **PRICE: £7.8.9.**

Rowi Turn (centre right): Features a reversible tripod head to provide either ¼in. or ⅜in. thread, accomplished simply by turning over tripod legs.

PRICES: 4-section brass, £5.12.3; 3-section nickel, £2.16.3; 4-section nickel, £3.2.3.

Rowi Flat (far right): Compact seven sections telescope down to nearly pocket size. Made from quality brass and finished in chrome with ribbed outer tubes. **PRICE: £7.5.3.**



Aids to correct negative exposure . . .



PALEC PE3

Exposure Meter

Designed for use with still, movie, and colour photography by either "incident light" or "reflected light". The PE3 is extremely sensitive to all lighting conditions — incorporates two brightness ranges which adjust themselves automatically whether the light is bright or very dull. So easy to use, too — requires only two adjustments to give a direct exposure reading: (a) Set the ASA film speed index; (b) Align the cursor arrow over the cell needle. The exposures are then read from the scales by either: (a) the shutter speed and f. number system; or (b) the light values system. For incident light readings, the baffle is snugly stored into the meter body and can be readily fitted over the photo-electric cell. Other important features are: shock - resistant meter movement; extreme sensitivity embraces shutter speed readings from 60 seconds to 1/1000 second, and f. stop numbers from f/1 to f/32; shutter speed scales follow the modern trend in calibration (1/30, 1/60, 1/125 second); large easy-to-read figures on all scales; of strong, compact, light-weight construction — weight 5½ oz.

PRICE: £12.14.6

KODAGUIDES

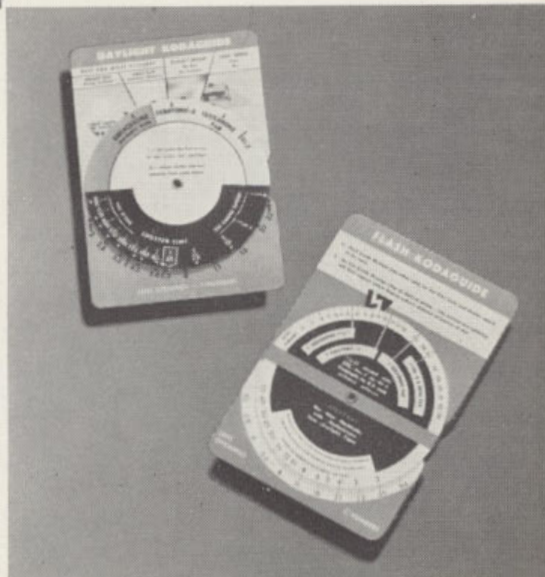
Daylight:

An easy-to-use dial calculator for determining lens settings for daylight pictures made on Kodak Verichrome Pan, Panatomic-X, Tri-X and Kodachrome (daylight type) films. To use, simply set the arrow for the film in use opposite the existing sky condition; then read off the lens-and-shutter settings at the bottom of the dial.

Flash:

Very similar to the Daylight Kodaguide except that it provides the lens settings for pictures to be made by flash lighting using the same above-mentioned films.

PRICE: 2.6 each



Kodak Lens Attachments

make your camera a better camera

Kodak Adapter Ring

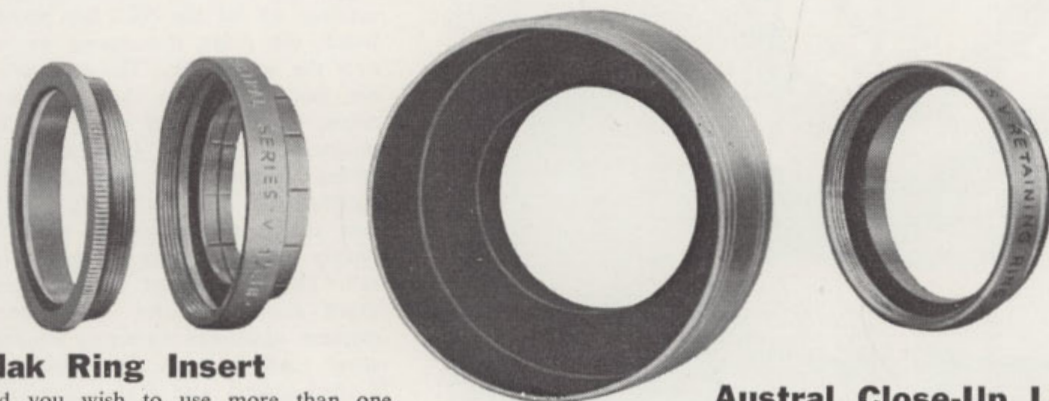
The basic unit to widen the scope and efficiency of your camera — permits the ready exchange of numerous unmounted filters and auxiliary lenses. Comprises two parts: an adjustable Adapter Ring and a Retaining Ring — each accurately made in strong, lightweight metal alloy. Has slip-on mount with adjustable prongs.

PRICES: Series V, £1.3.6; Series VI, £1.4.3.

Kodak Lens Hood

Just as you would shade your own eyes from sun glare and reflections, so does the Kodak Lens Hood protect your camera lens. In use, the Kodak Lens Hood screws into the Kodak Adapter Ring, and replaces the Retaining Ring of that unit. Strongly made of lightweight alloy.

PRICES: Series V, 16.0; Series VI, 16.5.



Kodak Ring Insert

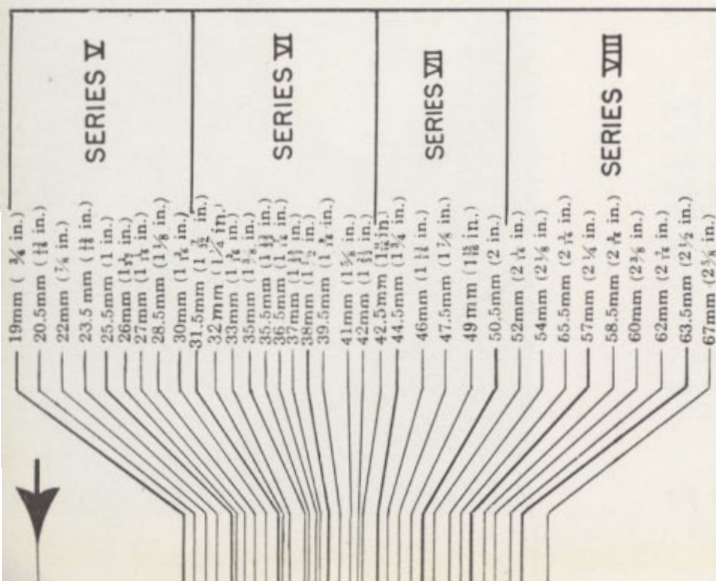
Should you wish to use more than one lens attachment for one exposure — say a filter, a close-up lens and a lens hood — the Kodak Ring Insert becomes the “connecting link” to bind all these units into one complete assembly. Inside and outside threads ensure a safe, snug fit.

PRICES: Series V and VI, 7.6.

Austral Close-Up Lenses

(Not illustrated.) Slip one of these handy lenses into a Kodak Adapter Ring and you'll have a new field of picture-making just waiting for your camera — this includes portraits of people and close-up photography of animals, flowers, etc. Austral Close-Up Lenses are made from fine quality glass in three degrees of magnification (+1, +2, and +3). Sizes available are 32mm. (to fit Series V Adapter Ring) and 42mm. (to fit Series VI Adapter Ring).

PRICES: 32mm., 10.6; 38mm., 10.0; 42mm., 11.1.



HOW TO ORDER KODAK LENS ATTACHMENTS

To obtain the diameter of a lens mount, lay the scale at left across the centre of the lens, with the arrow touching the outside edge of the lens mount. The line which touches the outside edge of the mount directly opposite then indicates the Kodak Adapter Ring size in inches and the series number of all Kodak Lens Attachments for that lens. If no listed size offers an exact fit, select the next larger size. The clamp prongs can be bent slightly to grip the mount.

Add punch to your pictures with

Austral Filters

Whatever your picture-making interests there is sure to be an Austral filter to help you . . . for filters dramatise pictures, give them a fresh sparkle and a new emphasis. As the name implies, the action of a filter is to retard light of certain colours—hence the tonal contrast is increased and the resulting picture greatly improved. In 31, 32, 38 and 42mm. sizes.

YELLOW: Just the filters to put punch into your pictures . . . they snap up the cloud effects by darkening the blue tone of the sky . . . they give certain degree of haze penetration in distant and mountain scenes. Available in light yellow and medium yellow.

YELLOW-GREEN: An ideal compromise between a yellow and a green filter. Here's what it will do for you: darken the sky for better cloud effects, penetrate distant haze, improve foliage and grass by rendering them lighter.

GREEN: For landscape, garden, and flower scenes where large masses of green foliage tend to dominate the picture—it lightens the greens and improves their detail; it will also darken the tone of blue sky and emphasise cloud effects.

ORANGE: For striking vigour and contrast particularly with panchromatic emulsions. Gives slight over-correction resulting in really beautiful seascapes, where it darkens both sky and water. Excellent for light architectural subjects against blue skies and gives greater penetration of haze than yellow filters.

RED: Its exaggerated renditions of darkened skies are truly spectacular, particularly when the elements are blue sky, white clouds, and strongly lit foreground.

BLUE: Gives improved tonal rendition and modelling by off-setting the excess yellow light normally associated with artificial lighting conditions.

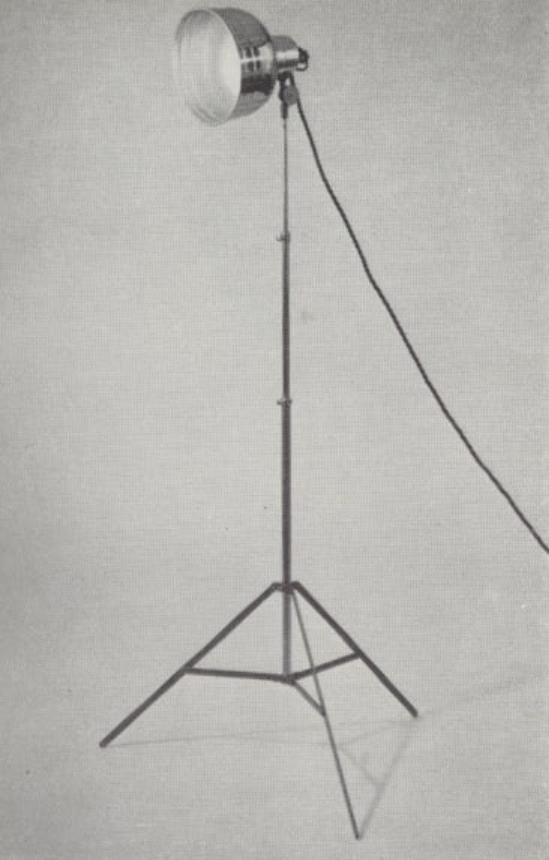
ULTRA VIOLET: Reduces excessive blue sky effects in Kodachrome slides caused by invisible ultra-violet rays in the atmosphere. It likewise reduces bluish haze in snow scenes and seascapes; adds warmth to colour slides exposed in open shade and on overcast days.

CONVERSION (Kodachrome Type A to Daylight): Permits the use of Kodachrome Type A (artificial light) film in daylight. Normal daylight exposures can be given with excellent results.

PRICES:

31mm., 32mm. (light yellow, medium yellow, light green, yellow-green, orange, blue and ultra-violet)	11.9
31mm., 32mm. red	14.0
32mm. conversion Type A — Daylight	15.3
38mm. above colours	12.9
38mm. red	15.3
42mm. above colours	13.6
42mm. red	15.9
42mm. conversion Type A — Daylight	18.9





Floodlighting Equipment

to help you make fascinating indoor night snapshots at home

Barton Single Unit Reflector

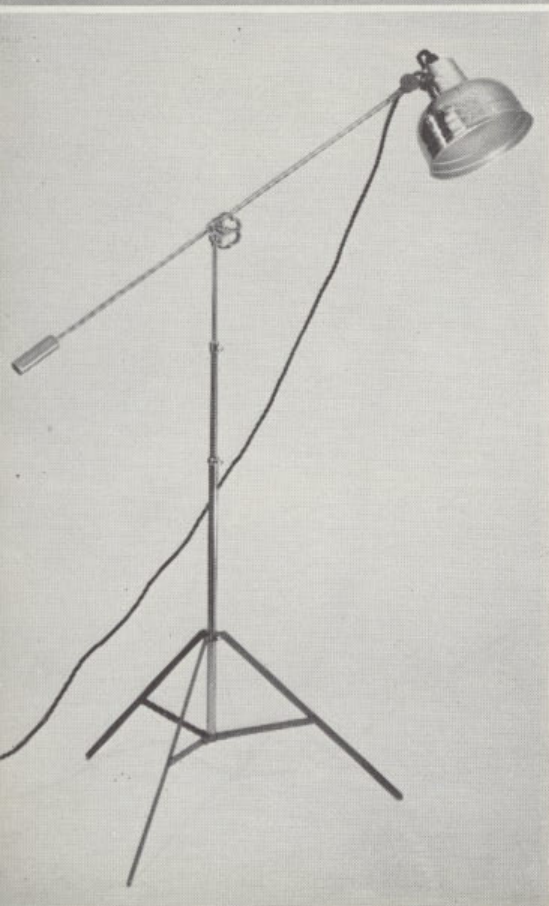
An ideal all-purpose lighting aid for around-the-clock picture-making; is designed to bring the utmost simplicity to indoor photography. Of sturdy, light-metal construction throughout, with triple extension stand and folding tripod legs. The reflector is complete with screw socket fittings, six feet of flex and 3-pin plug. Additional reflectors on extension arms may be attached.

PRICE: £8.9.9

Barton Junior Boom Floodlight

A versatile lighting unit for the more advanced enthusiast. Ideal for both stills and movies, the boom permits lighting from overhead for modelling, etc. Comprises an all-metal collapsible stand with folding tripod legs, standard reflector and a counter-balanced boom. Complete with flex, plug and all fittings; it accepts screw-in type floodlight lamps.

PRICE: £11.0.0



(A) Barton Spring Clamp Reflector

Will clamp on to anything thus permitting a full concentration of light in any direction, this by means of a ball-and-socket fitting. Fitted with B.C. lamp holder and built-in switch. Clamps are rubber-covered to prevent scratches.

PRICE: £5.10.6

(B) Barton Floor Light

Consists of a single reflector equipped with a standard E.S. socket, mounted on an adjustable upright; has rigid tripod base with rubber tips. Supplied with 6 ft. of flex and a 3-pin plug.

PRICE: £4.18.6

(C) Barton Junior Floodlight

Its adjustable stand and arm permit it to be directed wherever desired. It is compact, light in weight, and readily portable, with a highly-efficient all-metal reflector fitted with a B.C. lamp holder, flex and plug.

PRICE: £3.8.3

(D) Barton 500-Watt Spotlight

Because of its light weight and narrow beam angle, this spotlight is suitable for close-ups and special effects. Has well-ventilated lamphouse; uses 240-volt 500-watt E.S. Floodlight Lamp on an adjustable base. Sold with or without stand.

PRICE: £11.5.0 (without stand).



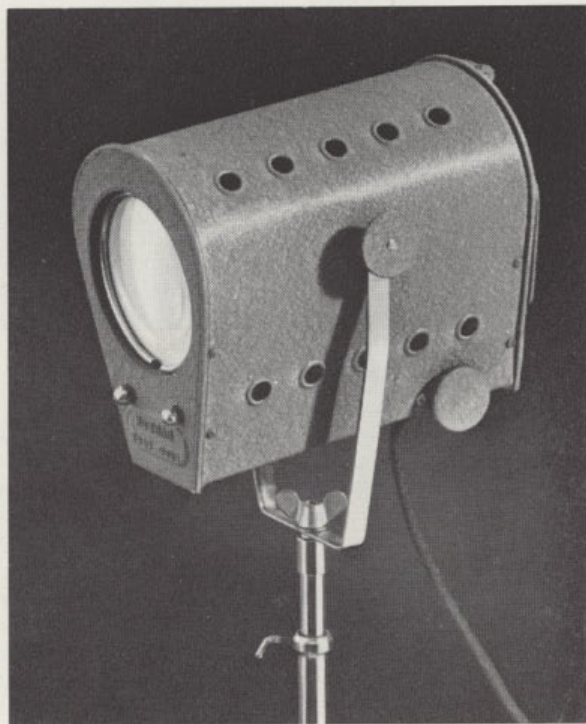
A



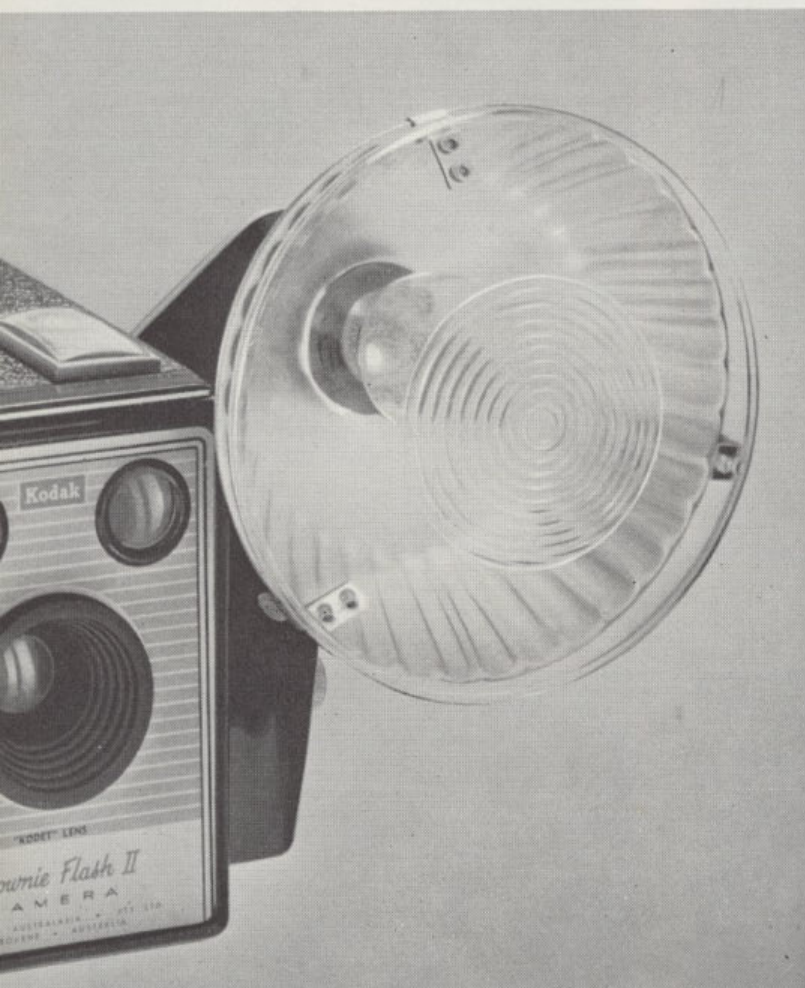
B



C



D

FLASH**is easy ...****FLASH****is fun ...**

BROWNIE FLASHHOLDER

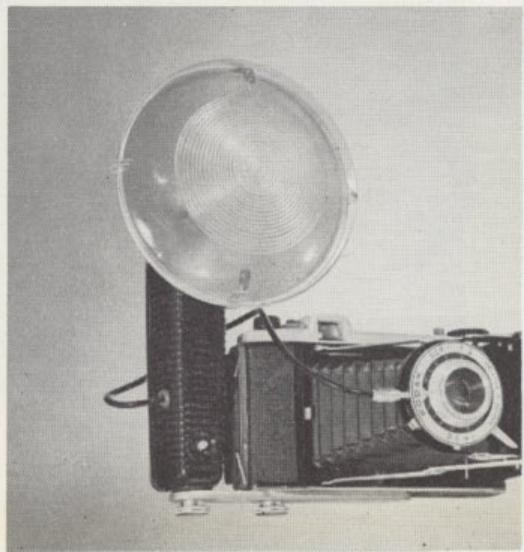
Now you can follow the new, popular trend of "flashsnapping"—the fun and pleasure of taking flash pictures anywhere, at any time. It's all so easy with the Brownie Flashholder which is designed to screw direct on to the Brownie Flash II Camera (and all other cameras with "screw and pin" fitting) without the need for using a cable and bracket—in this manner perfect synchronisation is made so that the flashbulb fires the instant the shutter release (on the camera) is pressed. Its trim, compact (4in. diam.) curved aluminium reflector concentrates the light to give maximum brilliance; the hinged clear plastic flashguard diffuses it slightly to yield softer shadows. It accepts only the economical capless flashbulbs (e.g., G.E.C. No. 1 and PF No. 1); an ejector pin releases the hot bulb after firing. The body is sturdily moulded in black plastic; it is designed for use with two 915 size AA Eveready or similar batteries. Available separately is a special Kodak Adapter (see page 16) which enables the Brownie Flashholder to be used with Kodak Retina cameras with flash contacts.

PRICE: £1.7.6

KODAK FLASHHOLDER Model 2

Flash photography is the smart, modern way to take pictures . . . and, it's all so easy with a Kodak Flashholder which is designed to fit practically every camera with built-in flash contacts. The Kodak Flashholder comprises a smart glossy black plastic body with a lightweight aluminium reflector and a clip-on plastic diffusing screen. It accepts two Eveready 935 torch batteries and all capless flashbulbs (e.g., G.E.C. No. 1 with adapter). It connects to the camera by means of a Kodak Flashholder Camera Bracket which screws into the Flashholder and into the tripod socket on the camera. A Kodak Flashholder Cable (type to fit) then connects the holder to the flash contacts in the camera and provides perfect synchronisation.

PRICE: £3.5.9 (complete with cable and bracket).



Photographic Lamps . . .

to provide you with "artificial sunlight"
when you want it and how you want it

Flashbulbs



When neither daylight nor flood light is available or suitable, the flashbulb is the obvious choice — it gives a brilliant flash of light when and where you want it without con-

sequence of weather conditions. Alternatively, the flashbulb can be used to supplement both flood and daylight where necessary. A wide range of bulbs is available from the tiny capless G.E.C.1 and PF.1 to the powerful PF.100. Blue coatings are available for use with Kodachrome film (daylight type) when used indoors with flash.

PRICES:

G.E.C.1, Capless	1	3
G.E.C.1Bs Capless	1	4
G.E.C.5, Capless	1	9
Photoflux — PF.1, Capless	1	3
PF.1, Blue, Capless	1	4
PF.5, Capless	1	7
PF.60, E.S.	2	11

Darkroom Lamps



Top quality lamps designed to give maximum illumination with perfect safety — made by the reliable house of Philips. Each has its special purpose in darkroom procedure — red

for developing orthochromatic films; green for inspection during development of panchromatic films (e.g., Verichrome Pan); yellow for developing Velox paper; yellow-green for Bromesko and Bromide paper. Available in a range of colours in sprayed or natural colour glass and fitted with B.C. bases.

PRICES:

Philips — B.C., Dark Red (Colour Glass)	8	1
B.C., Green (Colour Glass)	8	1
B.C., Green (Neon Filament)	9	4
B.C., Yellow (Colour Glass)	5	11
B.C., Yellow-Green (sprayed)	5	5

Floodlighting Lamps



Probably the best and easiest lighting source for home picture making — they're so easily fitted to normal household units such as reading lamps, and yet give that ever-necessary bril-

liance. Specially designed and made by B.G.E. and Philips for photographic use, these lamps give an intense light of high actinic value. Also available are mirror-backed lamps that effectively combine both reflector and light source in one easy-to-use lamp.

PRICES:

Argaphoto — 500, Type B	24	2
500W, Type BM	36	6
Photoflood — No. 1 250W, 2-3 hour	4	11
No. 2 500W, 6 hour	12	1
500W, 100 hour	24	5
Photolita — 250W, 2-3 hour	4	11
250W, mirror back	12	3
500W, 6 hour	12	0
500W, mirror back	21	0

Projection Lamps



Just as your eyes appreciate a good light for reading, so do your slides and movies project better with the correct lamp in your projector. All lamps are of high quality and are

dependable — produced by the famous electrical houses of B.G.E., Philips and A.E.I. In the standard bases to fit all projectors.

PRICES:

75W, 240V, A.S.C.C.	17	0
100W, 32V, A.S.C.C.	19	6
100W, 240V, P28	19	6
150W, 240V, A.S.C.C.	18	6
150W, 100V, P28	18	6
200W, 240V, P28	27	0
250W, 240V, P28	28	0
300W, 240V, P28	31	6
300W, 100V, A.S.C.C.	30	6
400W, 100V, B. & H.	47	0
500W, 240V, Prefocus	45	0
500W, 250V, P28	42	9



KODAK PHOTO-HOBBY OUTFIT

The "just-right" outfit for the hobby-minded boy or girl — ideal for those "special gift" occasions. It is so easy to use, thanks to the simple step-

by-step instruction chart, that it provides the ideal interest-packed hobby for youngsters — in fact, it could be the beginning of a successful career in photography. It is a complete outfit and contains everything needed for successful developing and printing at home: Kodacraft Roll-Film Tank (which eliminates the need for a darkroom), printing frame and masks (2½ in. x 3½ in.), plastic measure, two film clips, thermometer, stirring rod, three rocker dishes, blotter book, sponge, safelight, two packets of Velox Sensitized paper, four packets of Kodak Universal M-Q Developer, and four packets Kodak Acid Fixer. Neatly packed in an attractive box that is sturdy and compact for storage.

PRICE: £5.10.0



KODAK PHOTO-PRINT OUTFIT

A compact complete "do-it-yourself" outfit for printing snapshots at home . . . ideal for the beginner who would like to get more out of his hobby than simply operating a camera. No special darkroom is needed, and prints can be made quite easily in a darkened room. A fully illustrated instruction book outlines each step of the process. The attractive plastic case of the outfit is specially designed so that it becomes the actual set of processing dishes. In addition, the outfit contains the following items necessary for printing snapshots at home: 4-oz. plastic measure, printing frame and masks, stirring rod, thermometer, darkroom lamp (with battery and safelight), one packet of Velox Sensitized Paper, two packets Kodak Universal M-Q Developer, two packets Kodak Acid Fixer. If required, the

above equipment can be converted into a complete developing and printing outfit, simply by the addition of a Kodacraft Roll-Film Tank.

PRICE: £2.18.6



PROCESSING ACCESSORIES

Alka Funnel (Type MW/81)

A handy time-and-trouble saver to add to your darkroom accessories . . . which means, no more spilt chemicals, no more frayed nerves when bottling solutions. It is all moulded in pliable plastic and available in various colours. The funnel mouth-piece is 3in. in diameter and terminates in a spout 1in. long by $\frac{3}{8}$ in. wide.

PRICE: 1.3.



Kodak Stirring Paddle (Close right)

A handy 3-purpose processing aid — for crushing chemicals, stirring solutions, and agitating prints. Eliminates the necessity of touching solutions and prints with hands. Length, 10in. Moulded in strong plastic.

PRICE: 2.7.

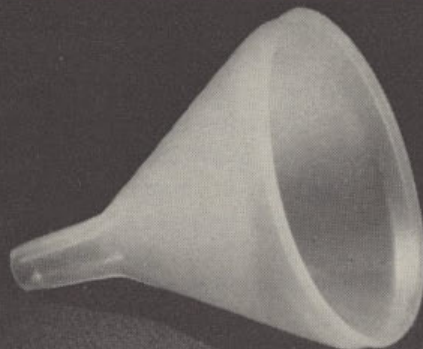
Kodak Chemical Mixing Plunger (Far right)

The perforated plunger head mixes as it plunges, thus giving a more efficient mix than stirring. Length is 10in. Plunger head is 1 $\frac{1}{2}$ in. in diameter. In stainless steel buffed to a high polish.

PRICE: 3.1.

PERFORMING THE 'DARKROOM MIRACLE' —

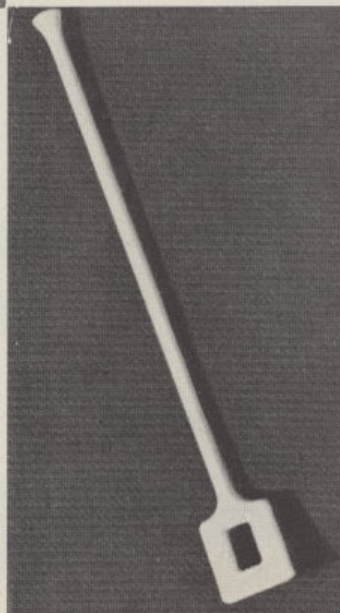
Today 'miracles' are few and far between but — there is still one miracle that is known to every practising amateur photographer. It's the supreme thrill (and one that never fails) he gets as he sees his picture "come up" in its developing bath. Make a list of the processing accessories you'll want, and soon you'll be enjoying the real satisfaction that comes from seeing your pictures "come up".

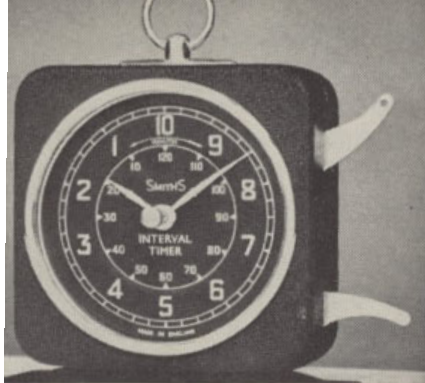


Austral Safelight Lamp

Correct darkroom illumination is vital to processing success — hence the Austral Safelight Lamp is a "must" for your darkroom. Designed mainly as a wall light, but provision has also been made for it to be hung from the ceiling or cupboards. Of all metal construction with spray finish, has light-proof ventilation to minimise overheating. Supplied with B.C. socket, flex, and 3-pin plug, but without safelight filter or globe. Made in two sizes to accommodate Wratten safelight filters.

PRICES: 5 x 7, £5.3.9; 8 x 10, £5.7.6.



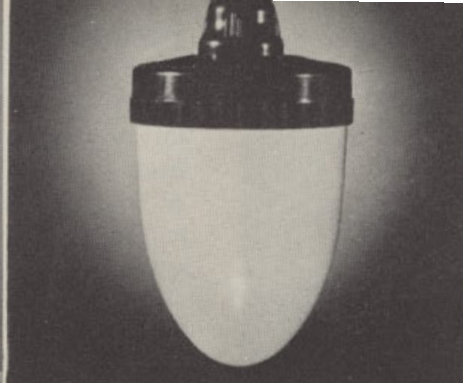


Smith's Interval Timer

Provides for accurate timing of processes from fractions of minutes up to two hours. The completion of selected periods is signalled by a loud alarm bell. **PRICE: £5.15.0.**

Graduates

A necessary aid in every darkroom for accurately measuring solutions. **PRICES:** Plastic, 4 oz., 2.9; 20 oz., 6.6. Glass, 8 oz., 6.0.

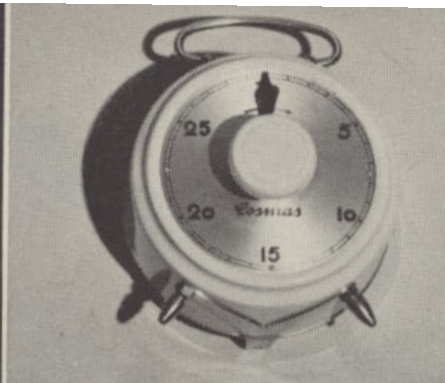


Brownie Safelight Lamp

Simply attaches to any household light fitting or reading lamp to give a perfectly safe safelight for processing Kodak Papers. **PRICE: 10.0.**

Kodak Plastic Dishes

Ideal for enlargements. In two types — opaque and transparent. Impervious to acid solutions. 2½ in. deep with ridged bottom. **PRICES:** 11 x 13, £3.3.0; 13 x 16, £3.14.6.

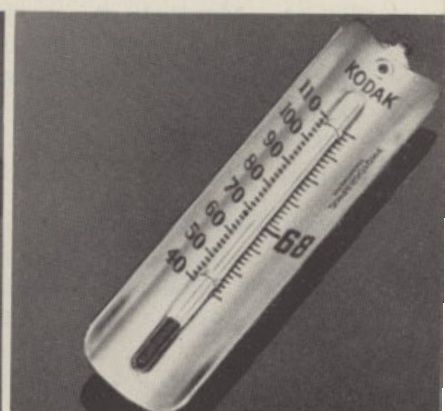


Cosmas Darkroom Timer

Three models — for timing up to 15, 30 and 60 minutes. Knurled knob winds clock mechanism and alarm. **PRICES: From £3.6.3.**

Kodak Thermometer

Degree readings, which range from 40-110 deg. F., are boldly marked and widely spaced. Metal casing is non-corrosive. **PRICE: 7.0.**



(A) Kodak Junior Film Clip

For safer and easier processing. Notch in top for quick, easy hanging on drying line. In stainless steel. **PRICE: 2.10.**

(B) Marquis Developing Dish

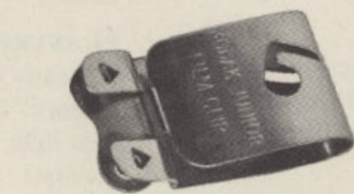
Strong durable plastic dish. Has bevelled bottom and pouring lip. **PRICES:** 4 x 5 in., 3.0; 5 x 7 in., 4.3; 7 x 9 in., 11.6; 9 x 11 in., 16.9.

(C) Kodak Darkroom Pins

Each pin is 1 in. long with tempered point and plastic head. 12 pins per box. **PRICE: 2.9.**

(D) Austral Print Forceps

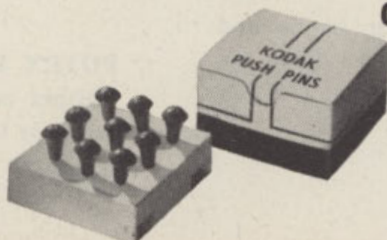
Ideal for handling prints — no finger stains, no wet hands. Notched to rest on dish. **PRICE: 4.4.**



A

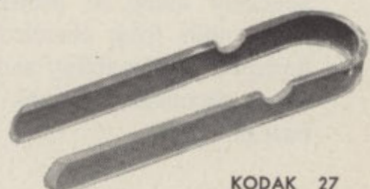


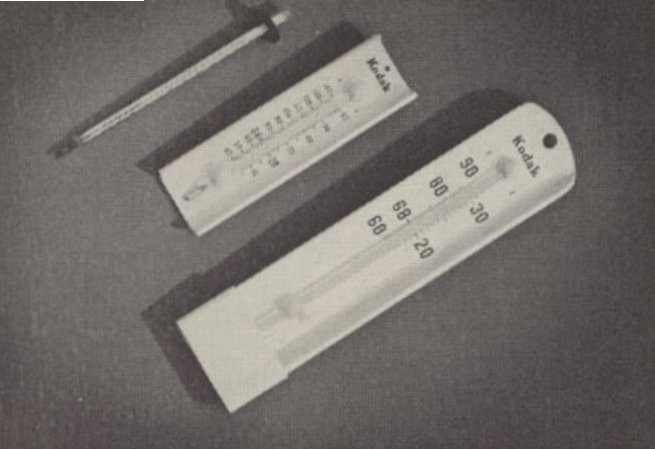
B



C

D





Kodak F 140 Thermometer

Top: Provides absolute accuracy at 68° and within 1° at the extremities of the scale. Spirit filled, it is graduated from 30° to 140°F. Fitted with a rubber ring to prevent breakage, to provide for easier picking up and to prevent it sliding into dishes, etc.

PRICE: 17.0

Kodak Dish Thermometer

Centre: Mounted on a chemical resisting plastic and graduated from 40°-140°F. Has a special expansion chamber should the thermometer be immersed in a solution up to 170°F.

PRICE: £15.3

Kodak Tank Thermometer

Bottom: A heavy-duty thermometer for general tank use. Mounted on white plastic with large easy-to-read figures. Graduated from 60° to 90°F. Has expansion chamber and a special stainless steel device for hooking onto the tank.

PRICE: £22.9

PLASTIC APRON

Prevents chemical stains from ruining your good clothes. Thoroughly water and chemical proofed to withstand years of darkroom work. 33" long.

PRICE: 16.4

NUTEX GLOVES

Specially made to protect your hands and finger nails from chemical action. They are designed for durability and long life. Will not affect chemical solutions.

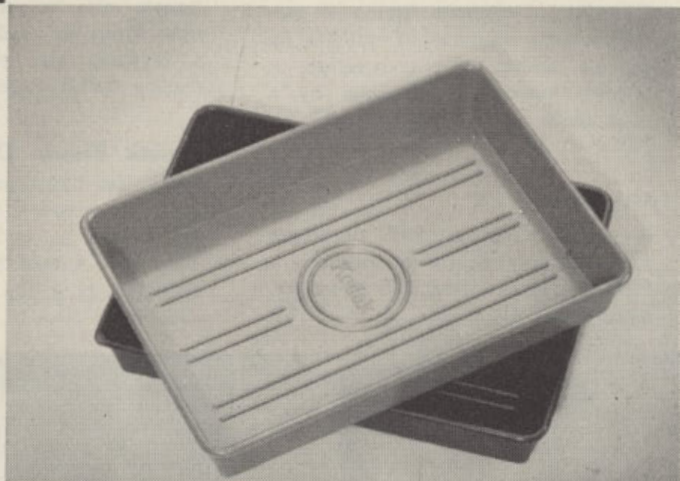
PRICE: 3.11

PROCESSING ACCESSORIES

KODAK ROCKER DISHES

Designed to permit a convenient rocking action for easy agitation during processing. Made from strong plastic for durability and ease of cleaning. Ridged bottom makes it easier to pick up prints. Handy pouring lip permits quicker re-bottling of solutions. Trays have sloping sides so as to nest for easier storage. 5 x 7-inch size in three colours — red, black and grey; 9 x 11-inch in grey only.

PRICES: 5" x 7", 3.9; 9" x 11", 15.3



KODAK PYRAMID SAFELIGHT LAMP

Designed for overhead suspension, thus giving the maximum of light. Ventilated to minimise overheating they are of all metal and are finished in white enamel. Made in two sizes to accommodate 5" x 7" or 8" x 10" Wratten Safelight Filters.

PRICES: Ventilated 5" x 7", £4.0.6; 8" x 10", £4.9.0; Unventilated 5" x 7", £2.15.0; 8" x 10" £3.8.6.

PLASTRON STIRRING ROD

A handy developing and printing aid that is a "must" for every darkroom. Plastic moulded, it is light in weight and has rounded ends to facilitate crushing chemicals. In four sizes. Will not affect chemicals.

**PRICES: 9 inch 2.0 15 inch 3.1
12 inch 3.0 18 inch 3.9**

FOTEX PRINT FORCEPS

Cleaner and more economical. Here is one sure way to rid yourself of finger stain trouble.

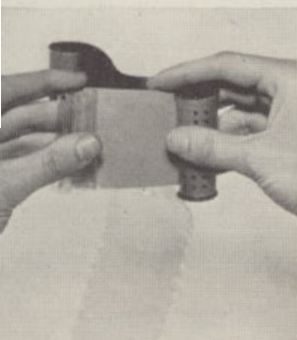
PRICES: Standard 3.7, Spring loaded 6.9

Kodacraft Roll-Film Tank with 620-120 apron

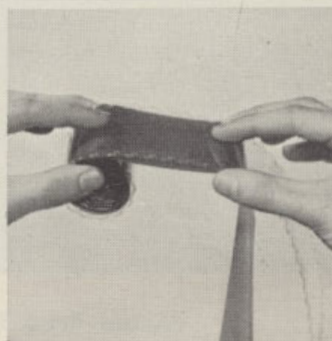
Provides the modern, easy way to develop 620 and 120 roll films at home. Each film is simply rolled up in the apron in just a few seconds and placed in the tank which holds 16 oz. of solution. All moulded in tough plastic. Both tank and apron are resistant to all normal photographic processing solutions.

PRICE: £1.15.0

Here's how the tank is used:



1. Unroll the protective paper backing as far as the end of the film. With the film apron unrolled place the end of the film next to the looped end of the apron and carefully begin to roll the film into the apron.



2. Keeping a slight tension and holding both the apron and the film by the edges, roll the rest of the film into the apron. Be sure the edges of the film are flush with the edges of the film apron.

3. Lower the film and the apron into the developing tank and raise and lower them several times. Place the weight on the apron and put the cover on the tank. The lights can now be turned on.



4. Agitate the film for about 10 seconds during every minute of the development time by moving the tank with a circular motion. After development, simply upturn the tank and pour out the developer—then complete processing in the normal manner.



Kindermann 60 Developing Tank

This high-quality tank is particularly recommended for processing colour films as well as black and white. Both the tank and the reel are of approved high quality stainless steel and will accept films of 120 or 620 size. The reel is of the spiral wire type and is extremely easy to load. In colour processing the film need not be removed from the reel for the "flash" or second exposure. The use of stainless steel for colour work is now standard practice overseas, and the Kindermann tank strictly conforms to these standards.

PRICE: £7.15.6



Aids to Better Printing . . .

Johnson Printer

Provides the means to make sparkling contact prints without fuss or bother. Made from smart yellow plastic with black trimmings — when switched on the body of the printer acts as a safe-light. Complete with an assortment of Kodaloid masks, the printer plugs into 240V mains.

PRICE: £2.19.6.



Austral Print Roller

A "must" for really successful squeegeeing and mounting of prints, particularly enlargements. Its high-quality rubber roller ensures a perfect even contact between print and mount. Has a strong metal frame and wooden handle to ensure long life. Available in 4in. size only.

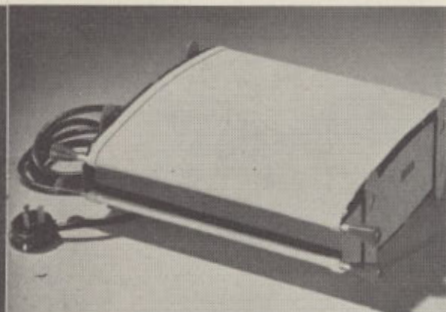
PRICE: 7.9.



Austral Amateur Glazer

Add to the attractiveness of your prints by giving them a mirror-like finish with this handy, efficient glazer. Will glaze prints as large as 8 x 10in. Of all-metal construction and complete with two large chromium plates, two strong white canvas aprons. Flex and plug extra.

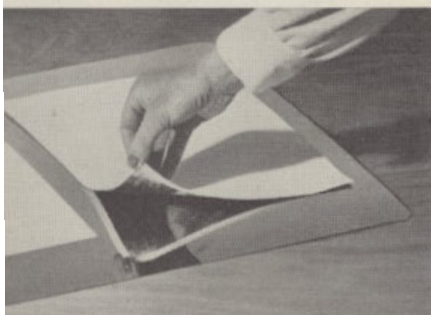
PRICE: £9.6.8.



Kodak Glazing Plates

Wet prints are simply placed face-down on the plates and firmly "ironed out" with a print roller or squeegee — when dry, they peel off as highly-glazed prints. Made of high-quality stainless steel.

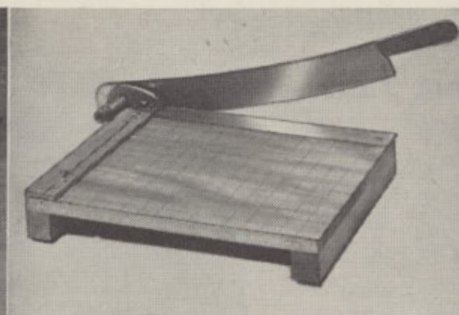
PRICES: 8 x 10in. £1.2.0; 14 x 20in., £3.0.0; 18 x 24in., £4.10.0.



Austral Print Trimmer

A sturdy, accurate all-purpose trimmer. The board is marked in 1in. squares, and is squared to a fine steel cutting edge. Special spring tension take-up holds blade in alignment and prevents it from falling when in use.

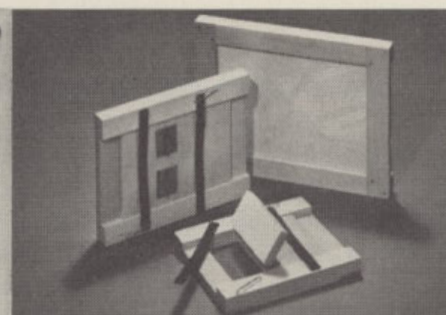
PRICES: 7in., £3.13.6; 12in., £9.2.9; 15in., £11.0.6.



Kodak Printing Frame

A "must" for efficient printing — it provides a firm contact between negative and printing paper. Made of strong white wood with cloth-covered hinged back, and strong metal clamps.

PRICES: 1½ x 2½in., 5.7; 2½ x 2½in., 6.9; 2½ x 3½in., 7.0; 2½ x 4½in., 8.3; 3½ x 5½in., 8.9.



PRICES:

Kodak Blotter Book	2	3
Ross Heavy-Type Roller — 4"	15	0
6"	17	6
8"	19	6
Barton Print-Washing Tank	£5	17 3

Kodaloid Printing Masks (Pkt. of 3)	3	0
Barton Print-Washing Hose Assembly (syphon)	£2	11 6

ENLARGING ACCESSORIES

Barton Foot Switch

A. An all-metal spring-type foot switch for use with enlargers, printing boxes, inspection lights, and all other types of lighting and other equipment employed for intermittent periods. Its use enables the hands to be left free for other uses. Well designed and sturdily made.

PRICE: £7.5.9.

El-an-De Masking Board

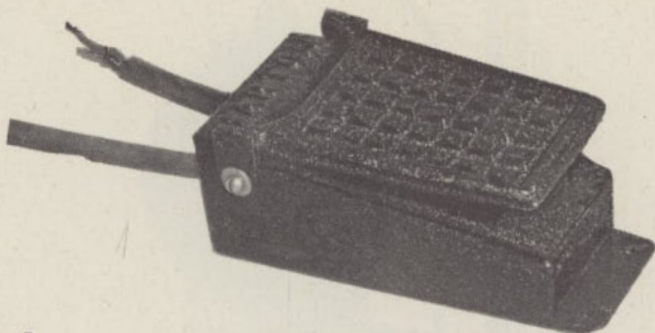
B. In a range of four sizes with heavy white enamelled base and all-metal black hinged frame. Adjustable light-gauge rules are easily moved or locked in any position by two large milled knobs. A movable bracket in the base permits margins of $\frac{1}{4}$, $\frac{1}{2}$ and $\frac{3}{4}$ in.

PRICES: $6\frac{1}{2} \times 8\frac{1}{2}$ in., £2.10.0; 8×10 in., £2.19.6; 10×12 in., £3.5.9; 12×15 in., £4.8.6.

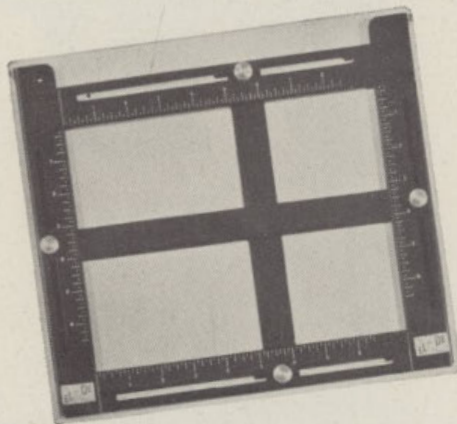
Kodak Projection Print Scale

C. A handy aid that can save both time and wasted sheets of "test" paper. The print scale is placed over the sensitized paper on the easel. With a negative in the enlarger an exposure of one minute is made in the usual way. After development, the correct exposure time may be read directly from the best appearing sector on the enlargement. This information is then used to determine exposures of other negatives of similar and varying densities.

PRICE: 12.6.



A



B



C

ENLARGING LENSES

PRICES:

Roussel Tylor —	85mm. f/6.3	£7.2.6
	135mm. f/4.5	£11.0.3
	135mm. f/6.3	£7.17.3

Som-Berthiot —	50mm. f/5.3	£12.16.9
	75mm. f/4.5	£12.16.9
	105mm. f/4.5	£12.0.0

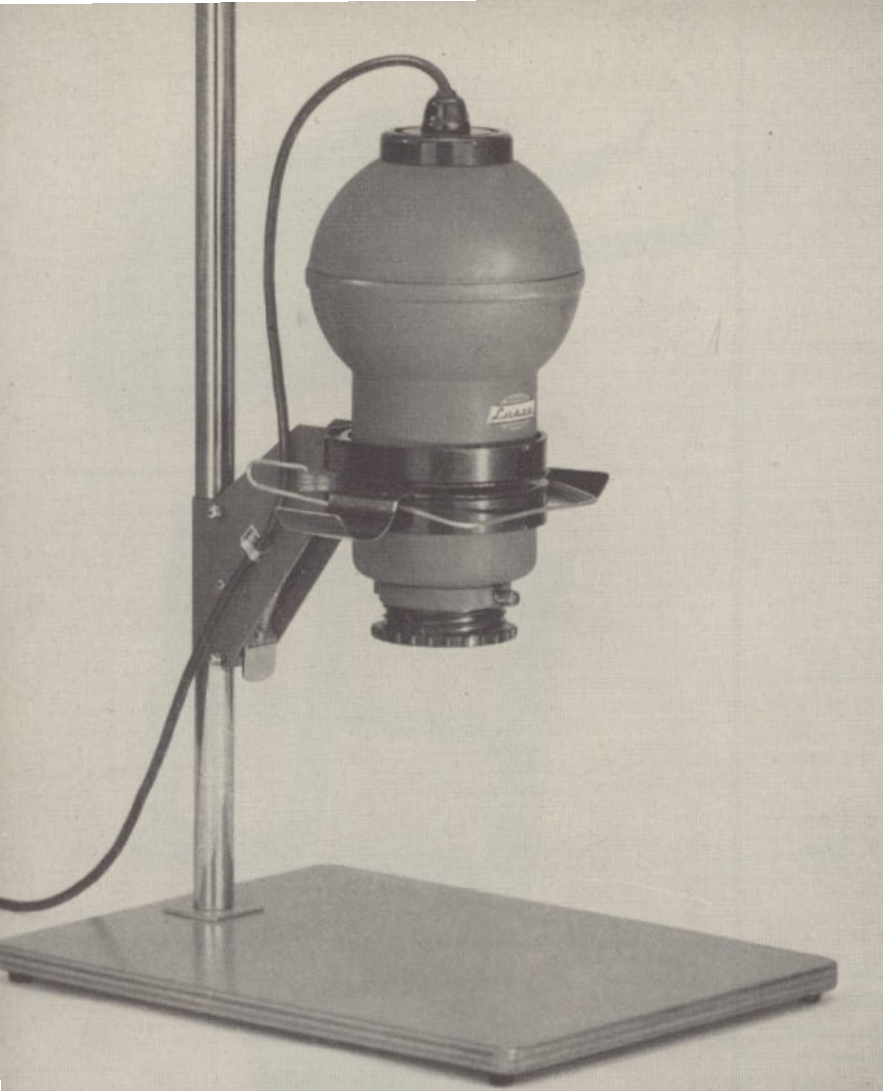
Condenser Lenses — sizes $2\frac{1}{2}$ " to $8\frac{1}{2}$ " diameter from £1.12.0.

Condenser Lens Mount from 15.0.

Enlarger Plastic Dust Cover 16.1.

Enlarger Lamps —

40 W	5.0	250 W	8.10
75 W	5.2	300 W	12.4
150 W	8.0		



Enjoy the thrill of
making your own
enlargements at home
with the popular

LUSCA ENLARGER

2½in. x 3¼in.

Looking forward to making your own enlargements? . . . then you'll be best equipped with this modern, efficient Lusca enlarger. Smart in design, modest in cost, smooth in operation, reliable for a lifetime. Check these features . . . you'll really enjoy this new thrill in photography.

Accepts negatives up to 2½ x 3¼in. May be used optionally with diffusion or condenser type of illumination. Supplied with a Som-Berthiot 105mm. (4 inch) f/4.5 lens, or is available to order without lens. Head assembly raised or lowered by quick release thumb-operated control plate. Chromium plated 26-inch steel support column. Well-ventilated lightweight lamphouse incorporates B.C. holder (to accept 75w or 100w opal enlarging lamp) and flashed opal diffusing disc. All-metal negative carrier with quality glass plates extension cups, and spring lever to open plates while advancing film.

Large knurled knob locks focusing mechanism. Fitted with removable lens panel (additional panels available separately including screw-threaded panels for Leica lenses). With 105mm. lens the maximum enlargement on the baseboard is 4.7 diameters, minimum is 1.5 diameters. Enlarger head rotates 180 degrees for projection to floor level. Laminated ¾in. baseboard with rubber pads on the underside. Weight 6 lb. Overall height with enlarger head fully raised, 40in. Total area of baseboard, 18in. x 14in. (When ordering, state

assembly required — Assembly A for 2½ by 3¼in. negatives (with or without lens); Assembly B for 2½ by 2¼in.; Assembly C for 24 by 36mm.

PRICES:

Lusca Enlarger:

Assembly A (with lens)	28 10 0
Assembly A (without lens)	16 10 0
Assembly B (without lens)	16 10 0
Assembly C (without lens)	16 10 0

Lusca Enlarger Accessories:

Glass for negative carrier	10 6
Diffusion disc	8 6
Metal focusing cone — 2"	1 11 9
3"	1 13 0
4"	1 15 0
Plastic focusing cone — 2"	1 0 9
4"	19 0
Lens panel	10 6
Kodaloid Masks	1 3
Negative carrier for 135 film	2 6 3

KODAK

Precision Enlarger

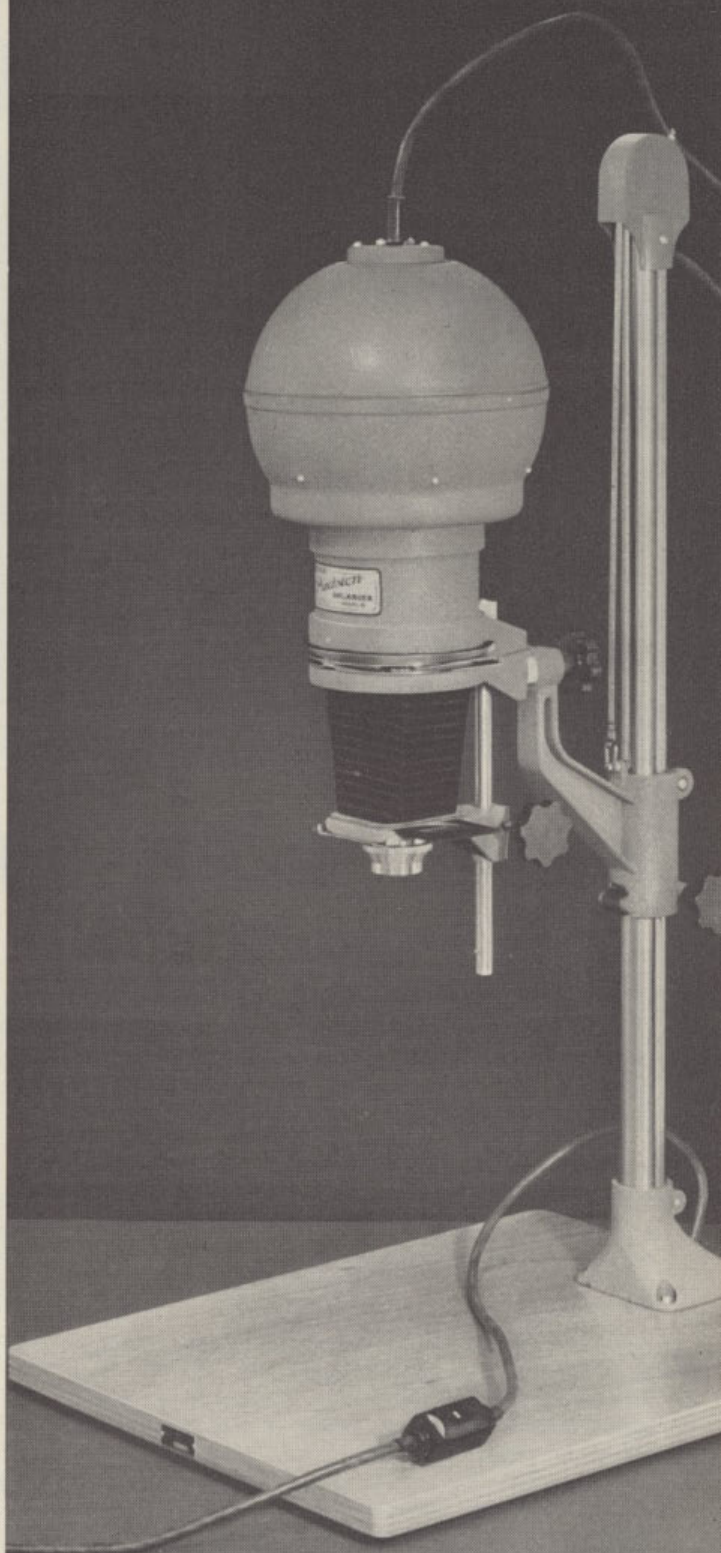
Together with its auxiliary equipment, the Kodak Precision Enlarger represents a carefully-planned programme of interchangeable components, designed and manufactured with precision to meet the most exacting demands.

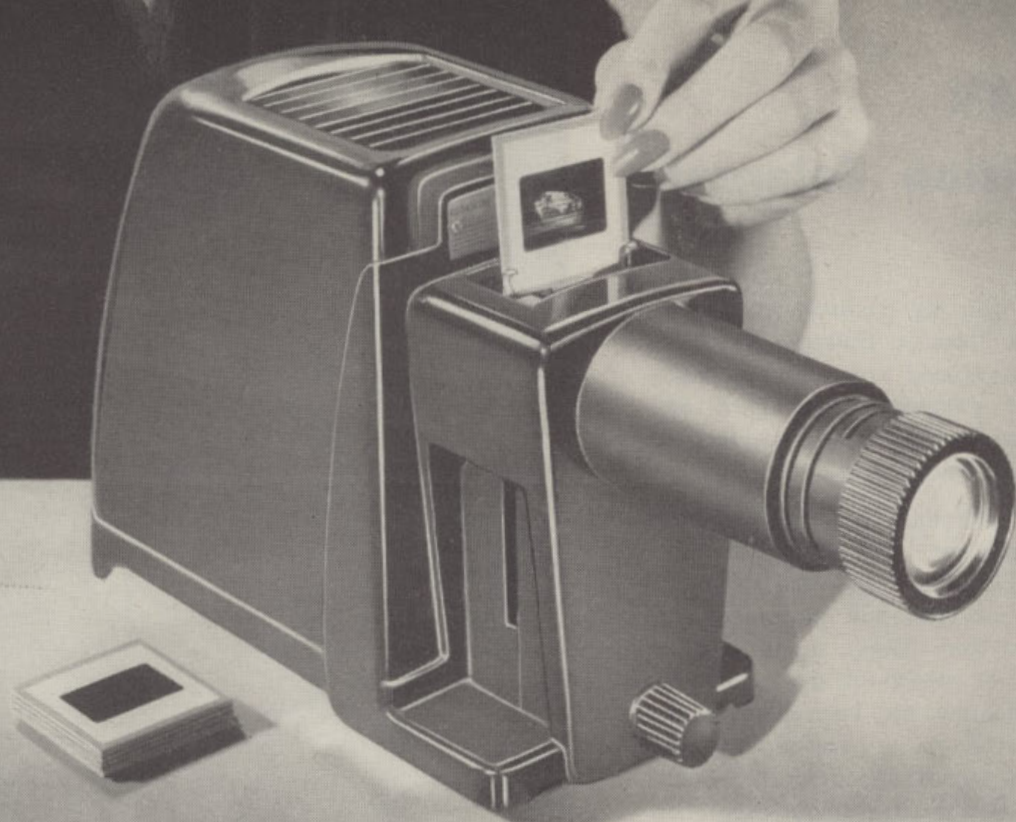
The basic equipment is a highly-efficient vertical enlarger for visual focusing, which will handle, with equal efficiency, roll film, cut film and plate negatives in all sizes from 35mm. up to 2½in. by 3½in. In the design of this equipment special attention has been paid to the needs of the colour worker, and the enlarger is recommended for the exacting work of preparing colour separation negatives from Kodachrome colour transparencies.

Its features include: Resin-bonded plywood baseboard measuring 22in. x 17½in.; 32in. tubular steel column of 1½in. diameter; will accommodate all negatives up to 2½in. x 3½in. in size; the condenser head incorporates two 4½in. diameter condenser lenses and a disc of heat-absorbing, heat-resisting glass; a friction-wheel drive system permits extremely accurate focusing; complete with 240/250-volt 150-watt lamp, safety filter, flex and plug, toggle ON-OFF switch, two roll-film support cups, and a negative carrier with a set of six interchangeable Kodaloid masks. Complete with Kodak Ektar 100mm. f/4.5 lens.

PRICE: £116.8.0

Available also is a wide range of special Precision Enlarger accessories. Prices on request.





KODAK MERIT PROJECTOR

Now you too can enjoy the thrill of owning your own projector and screening your own Kodachrome colour slides at home . . . at a budget price that you can afford. With performance and reliability you would expect to find only in more costly projectors — brilliant 250-watt screen images in all sizes up to six feet wide — the Merit is truly the ideal projector for the amateur colour slide enthusiast. Check these features:

Fitted with a colour-corrected and coated 5-inch Kodak $f/3.5$ projection lens. The maximum light is transmitted through the aspheric condensing lens to ensure edge-to-edge screen brilliance, sharpness, and faithfulness of colour reproduction.

Convection-cooled — the large size ventilated lamp-house and built-in heat-resisting glass minimise heat and protect slides from damage. Cooled by air channelled through aluminium baffles, it may be operated safely for hour after hour. New easy-to-use slide feeding mechanism accepts slides from the top, thus minimising image movement on the screen. Smooth finger-tip elevation control permits the projector to be

locked at any position from horizontal to 10 deg. A spiral-grooved lens barrel rotates for easy, accurate focusing. Rubber-tipped legs prevent slipping or scratching of polished surfaces. Strong lightweight body of black moulded plastic is perfectly opaque and so minimises reflection. Weighs only 3½ lb. Operates direct from a 240V. power supply. Supplied with 9 ft. of flex and three-pin plug. Handsome lightweight carrying case available separately.

PRICES: Projector, £19.10.0
Case, £3.17.6

2 by 2-inch Slide Projectors . . .

Neo-Diafant

Popular high-quality projector for use with either 2 by 2in. slides or 35mm. film strips. Note these outstanding features: A highly perfected mirror-condenser system ensures the maximum light output; 50/60mm. Patrinas f/2.5 coated lens gives brighter screen image; Heating during use is minimised by an ingenious triple-walled housing; Light source is a 250-watt lamp connected directly to mains supply; Incorporates aspherical double condenser lenses, heat-absorbing filter, lamp centering device, vertical and horizontal tilting knobs, and built-in switch; Sturdy all-metal construction finished in satin grey enamel; Complete with slide attachment, 250W. lamp, lens cap, and 9 ft. of flex.

PRICES: Projector, £52.0.9
Film Strip Holder, £4.12.6



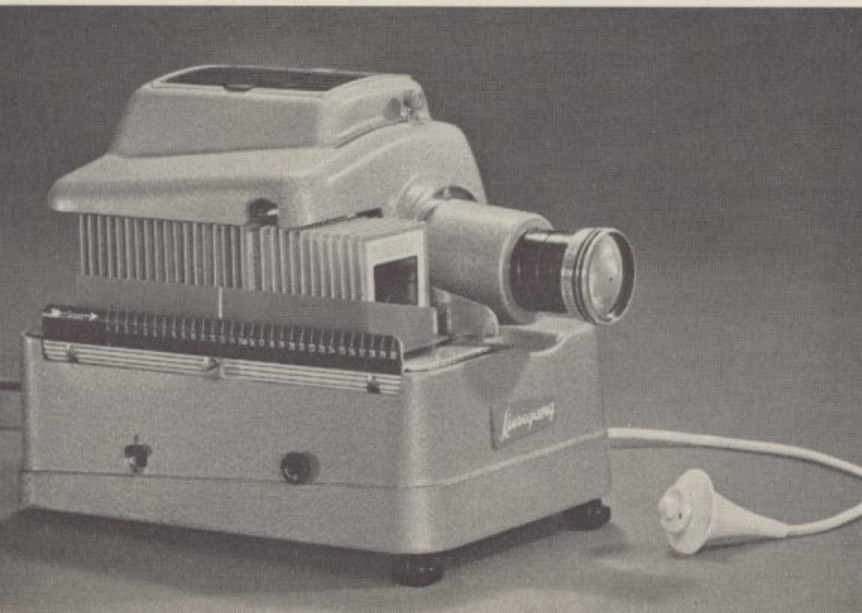
Fantax Automat

This modern 2 by 2in. slide projector operates by remote control and is entirely automatic. All you do is load the magazine which holds 30 slides, make yourself comfortable in a chair nearby, then gently press the button on the 16 ft. remote action cable. Then, the almost inaudible motor changes the slide;

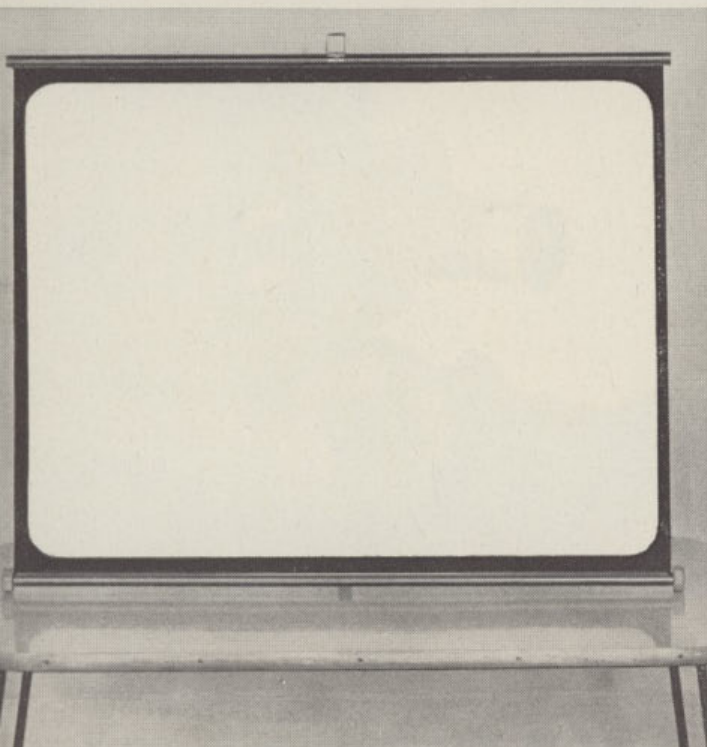
as it does so the light fades out then gently in again. It is also possible to repeat or omit transparencies during a screening by manual adjustment of a special control on the projector. The Fantax-Automat has a 300-watt lamp which is cooled by a built-in blower unit. The blower also guards against the "popping" of transparencies due to excessive heat. Easily interchangeable lenses permit a projection distance of more than 17 yards and obtain a bright picture up to 12 by 12 ft. The Fantax-Automat plugs straight into the 240-volt mains; no need for transformer. Complete with carrying case.

PRICE: £67.12.0

Also available is the Fanti Automat which, with the exception of its 150 watt convection-cooled lamp, is identical to the Fantax Automat. Price: £43.13.6.



PROJECTION SCREENS



Regal Cadet:

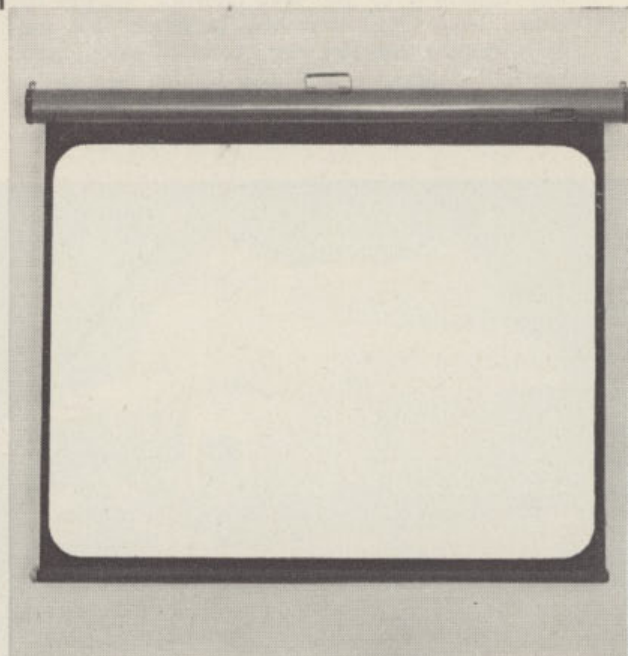
Provides an efficient, perfectly matte white screening surface. Its unique stand comprises a single-spring tension bar which fits into the top and bottom rollers to provide a firm, taut surface — an attached arm with a rubber vacuum cup keeps the screen perfectly erect. The complete screen rolls up to fit into a sturdy cardboard cylinder for protection during storage. Conveniently light in weight and compact for easy carrying.

PRICES: 30 x 40in., £6.6.0; 36 x 36 in., £5.15.6.

Regal Monarch:

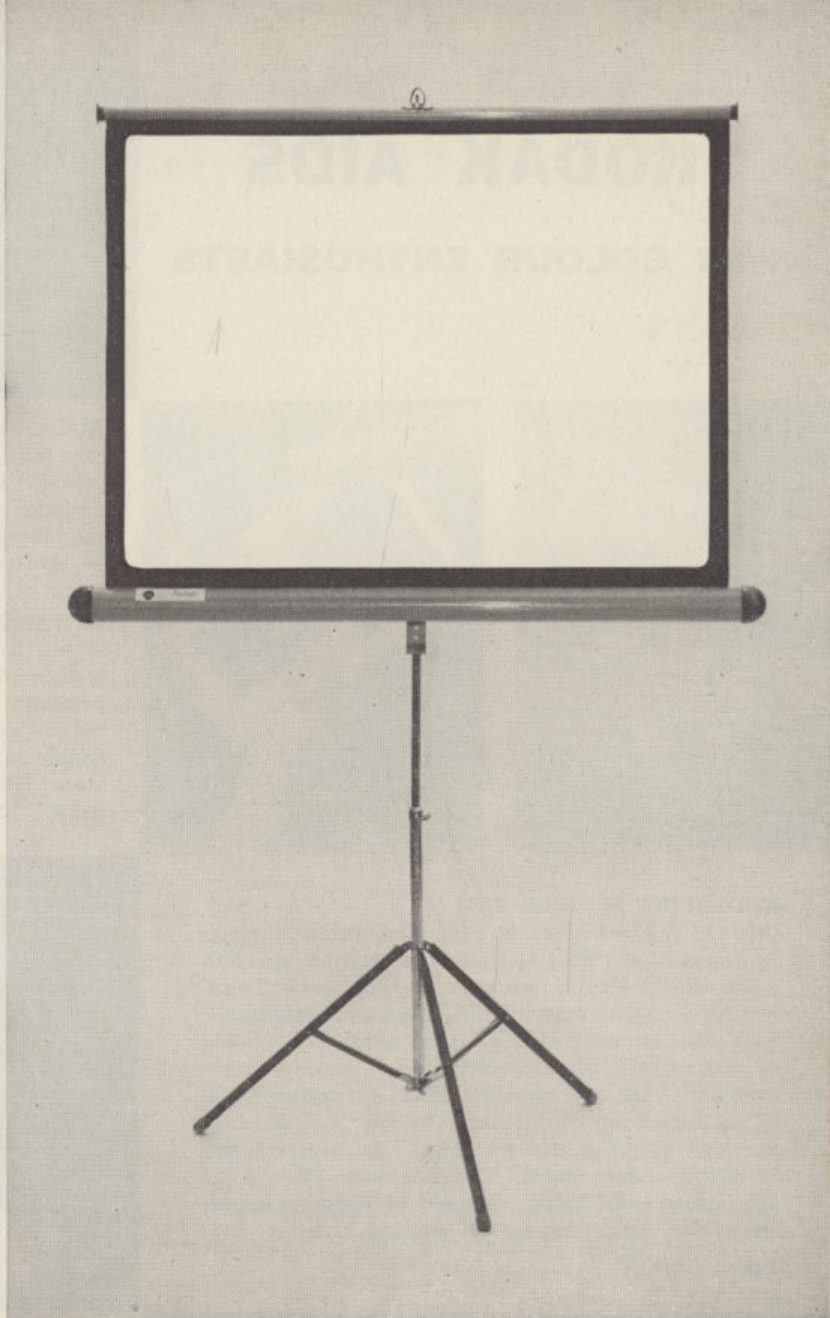
An all-purpose portable hanging-type screen ideal for use in the home, clubs, classrooms, etc. Can be hung anywhere in a jiffy . . . or permanently fixed to the wall by the attachments provided — then simply pull it down like a roller blind and you're ready for screening. After use it neatly rolls up into its smart metal tube which gives maximum protection against dust and knocks.

PRICES: Glass-beaded, 30 x 40in., £9.8.9; 39 x 52in., £12.10.9; 48 x 48in., £13.0.0. White matte, 39 x 52in., £9.5.6; 48 x 48in., £9.11.9.



HUNTER STARLIGHT SCREEN

The Starlight is a tripod screen and is therefore self-supporting, standing on its own legs making it completely independent and more versatile in use — no need to provide means for hanging or standing on a table. It is built as one complete unit — the streamlined protective tube for the screen is permanently fixed to the tripod base which folds up into a compact unit for handling or for storage; it has a carrying handle, is very light, and so is ideal for transportation purposes. The high quality “crystal-glass beaded” projection surface which is protected in the steel barrel, unrolls and is clipped to the extending arm ready for use. It can be raised or lowered at will on the adjustable column. Caps are fitted to the tripod legs to prevent them from scratching

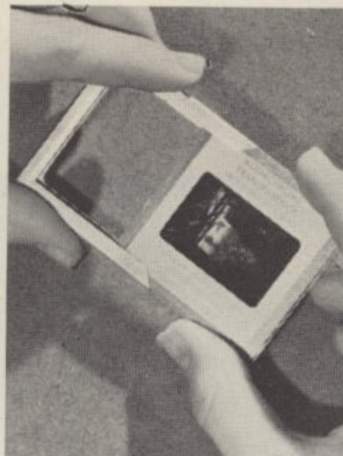


the floor. Available in 30 by 40in. size for standard horizontal screening of slides and movies; also as a 40 by 50in. size. The 48 by 48in. size accepts both upright and horizontal slides.

PRICES: No. 1, 30 x 40in., £11.17.0; No. 2, 40 x 50in., £15.14.0; No. 2A, 48 x 48in., £17.2.0.

KODAK AIDS

FOR COLOUR ENTHUSIASTS



KODAK READY-MOUNTS

(Far left.) Ideal for replacing creased and "dog-eared" mounts. Easy to use — just place the transparency in position, moisten the pre-gummed surface, and fold the mount over. The result — a sturdy mount that will fit standard 2in. by 2in. projectors and viewers. In boxes of 50. **Price: 8.6.**

REGAL TRANSPARENCY MOUNTS

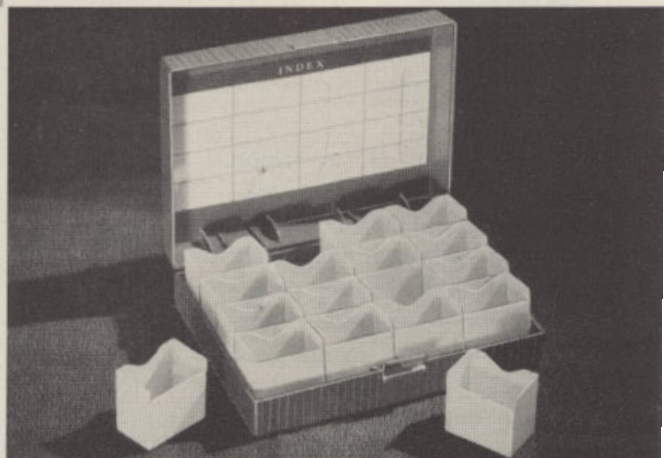
(Close left.) An economical, simple and permanent method of protecting your valuable Kodachrome transparencies. Each mount comprises two sheets of fine optical glass and a lightweight metal frame. To use: Simply insert the entire cardboard mount between the glasses and slide into the mount. In boxes of 20.

Price: 14.8

KODASLIDE 400 FILE BOX

(Right.) The new trend in filing Kodachrome slides is by groups — and what better system than this ingenious outfit with its sixteen removable compartments? Excellent for use with automatic slide changers on projectors. Each compartment holds 20 to 25 cardboard mounts, or 400 in total (approximately 176 if glass or metal mounts). When you open the cover the compartments all tip back ready to lift out. The box itself moulded in tough attractive maroon plastic; the compartments in pliable yellow plastic. Complete with index in lid and strong metal catch. Supplied in strong protective carton for vertical storage in bookcase style.

Price: £1.15.0.



KODAK COLOUR PRINT MOUNT

(Far left.) An ideal way to feature much-treasured colour prints. Will readily stand up on your desk, as well as dress up a snapshot to be enclosed in a letter. Made of grained lightweight ivory board to accept one print 3½ by 5in. **Price: 1.0**

PARKER COLOUR PRINT FRAME

(Close left.) Adds that "finishing touch" to Kodak colour prints when required as a gift or for home decoration. Of neat wood construction and finished in attractive ivory. Complete with slide-in back and two-way strut to accept 3½ by 5in Kodak colour prints.

Price: 7.10.



KODAK SLIDE KIT

For mounting your own slides. Gives your "special" slides longer life and greater protection against dust and scratches, etc. Slides can be mounted simply and quickly. Kit consists of 100 optical glass 2 x 2 inch slide covers, 50 Kodak 135 masks, 12½ yards of Kodak binding tape, 60 stickers for marking slides and a handy box that holds 37 of the completed slides.

Price: £1.5.0.

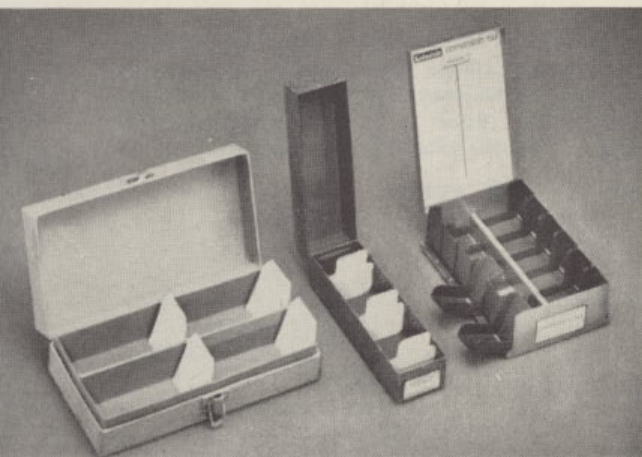
KODASLIDE POCKET VIEWER

(Far right.) Sturdy, compact viewer for 2 by 2in. slides — four times magnification. Has ground and polished optical glass lens. Size when folded — 2½in x 2½in. x ½in. Accepts cardboard, metal, and glass mounts. In sturdy plastic. **Price: £1.2.6.**

ARNOS TRANSPARENCY FRAMES

(Close right.) Keep your best Kodachrome slides free from fingerprints, dust and scratches — protect them with these sturdy all-metal transparency mounts. Fitted with fine quality optical glasses to ensure freedom from distortion. Available in boxes of 20.

Price: £1.1.0.



KODASLIDE FLEXO FILE

(Left.) Gives low-cost storage for valuable Kodachrome slides. Holds up to 340 cardboard or 224 glass 2 x 2in. slides. In reinforced cardboard. **13.0.**

KODASLIDE FILE BOX

(Centre.) Robust all-metal construction keeps precious slides safe from knocks and dust. Accommodates up to 140 cardboard, or 55 glass slides. With five movable separators and press-spring catch. **£1.1.0.**

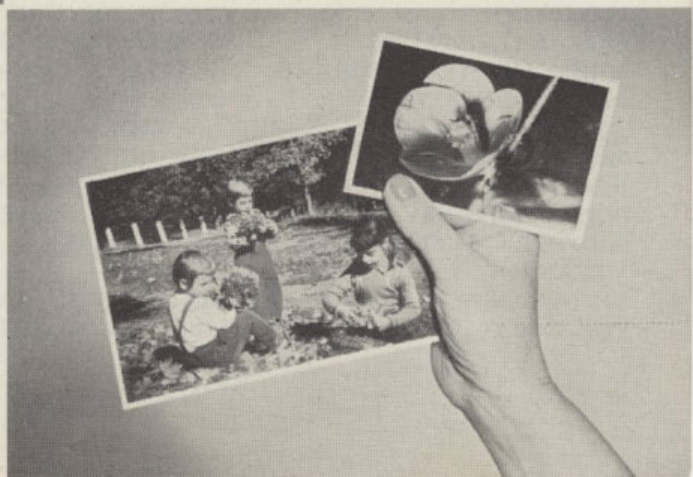
KODASLIDE COMPARTMENT FILE

(Right.) It features twelve handy swing-out compartments for convenient access to groups of slides. Each compartment holds 20 cardboard or eight glass (or metal) slides. In hamerglow finish. **£1.15.0.**

KODAK COLOUR PRINTS

With Kodak Colour Prints the beauty of your favourite positive colour transparencies can be reproduced as rich, natural glossy prints. By having such prints made you can share the beauty of your colour transparencies with others as well as enjoy them displayed in your own home. They can be made from any 24 by 36mm. (Retina size) or 28 by 40mm. (Bantam size) positive colour transparency. Available in two sizes — 3½ by 5in. or 5 by 7½in. (including ¼in. white border) — both are ideal for framing or as gifts to relatives and friends. Kodak Colour Prints can be ordered singly or in any quantity from the one original transparency.

Prices: 3½ x 5in.. 8.6; 5 x 7½in. 18.6.





Kodachrome View Transparencies

★ *Australian Scenic Interest*

★ *Historical and Topical Events*

★ *Miscellaneous Overseas Views*

Kodachrome View Transparencies are full-colour 35mm. natural colour slides mounted in 2 by 2in. cardboard mounts ready for projection. Nearly 700 different titles (listed in a separate catalogue) are available under the following subject groups:

PRICE: 4.6 each

SYDNEY
MELBOURNE
BRISBANE
ADELAIDE
PERTH
CANBERRA
PICTURESQUE TASMANIA
BALLARAT/GEELONG
SNOWY MOUNTAINS SCHEME
BLUE MOUNTAINS —
JENOLAN CAVES
SOUTH COAST, N.S.W.
NEWCASTLE
POPULAR SYDNEY BEACHES
SOUTHERN QUEENSLAND
BEACHES
VICTORIAN BEACHES
THE GREAT BARRIER REEF

CENTRAL AND NORTHERN
AUSTRALIA
AUSTRALIAN SURF
LIFE-SAVING CARNIVAL
TOWNSVILLE
CAIRNS
THE AUSTRALIAN SCENE
AUSTRALIAN FLORA AND FAUNA
AUSTRALIAN ABORIGINES
LORD HOWE ISLAND AND
NORFOLK ISLAND
NEW GUINEA HIGHLANDS
PORT MORESBY AND
PAPUAN NATIVES
NEW ZEALAND
ATLASES
ROYAL TOUR, 1954: H.M. QUEEN
ELIZABETH VISITS AUSTRALIA

CORONATION OF H.M.
QUEEN ELIZABETH II
THE ENGLISH SCENE
LONDON
EDINBURGH
SCOTLAND
PARIS
ROME
VENICE
SCENES OF ITALY
SCENES OF HOLLAND
UNITED STATES OF
AMERICA
SOUTH AMERICA (Brazil)
SCENES FROM SCANDINAVIA
SCENES OF EGYPT
SINGAPORE
SANTA CLAUS IN AUSTRALIA
MISCELLANEOUS

See the World from Your Own Armchair . . .

VIEW-MASTER®

Stereo Viewers & Stereo Reels

Seeing pictures in true three-dimension colour is an unforgettable experience. With View-Master Stereo Viewers and Reels a whole new world of beauty and adventure comes to life before your eyes. A flick of the finger changes the scene; accurately ground and polished lenses keep the image clear and sharp. You can build your own library of View-Master stereo reels from the comprehensive list below. Each reel contains seven delightful stereo scenes that are both entertaining and educational for young and old.

**PRICE: Viewer, £1.15.0
Reels, 5.0 ea.**

Egypt:

Cairo and the Pyramids
Land of the Nile

Southern Rhodesia:

Victoria Falls

India:

Taj Mahal, Agra

Japan:

Mount Fuji and Rural Scenes

Middle East:

Jerusalem, "The Holy City"

England:

London I
Changing the Guard at Buckingham Palace
Windsor Castle, Royal Residence
Shakespeare's Stratford-on-Avon

France:

Paris I
Monaco and Monte Carlo

Holland:

Tulip Time

Italy:

Rome I
Venice

Norway:

The Fjords

Scotland:

Robert Burns' Country
Highland Scenes
Edinburgh

Switzerland:

The Matterhorn and Zermatt
Interlaken Region

Wales:

Wales I

Canada:

Banff, Canadian Rockies
Lake Louise, Canadian Rockies
Niagara Falls, Ontario

United States of America:

Niagara Falls
Washington, D.C., I
New York City I
New York City II
San Francisco, California
Grand Canyon, South Rim, Arizona
Grand Canyon, North Rim and Mule Trips

New Zealand:

The Maoris, Natives of N.Z.
Rotorua, North Island
The Southern Alps

South Pacific:

Tropical Tahiti, Society Island

Australia:

Sydney, N.S.W., I
Sydney, N.S.W., II
Sydney, N.S.W., The Beaches
The Blue Mountains, N.S.W.
The Great Barrier Reef, Q.
Kangaroo Hunt with Aborigines
Canberra, Capital of Australia
Melbourne, Victoria, I
Melbourne, Victoria, II
Adelaide and vicinity
Alice Springs, N.T.
Perth, W.A.
Tasmania I
Tasmania II
Jenolan Caves I

Fairy Stories:

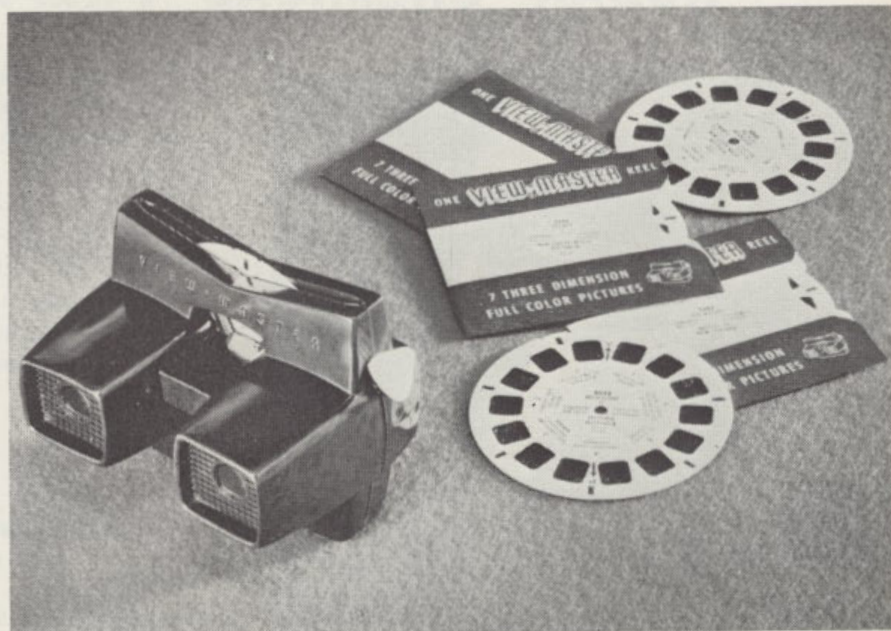
Little Red Riding Hood
Hansel and Gretel
Jack and the Beanstalk
Cinderella and the Glass Slipper
Goldilocks and the Three Bears
The Three Little Pigs

Cartoon Characters:

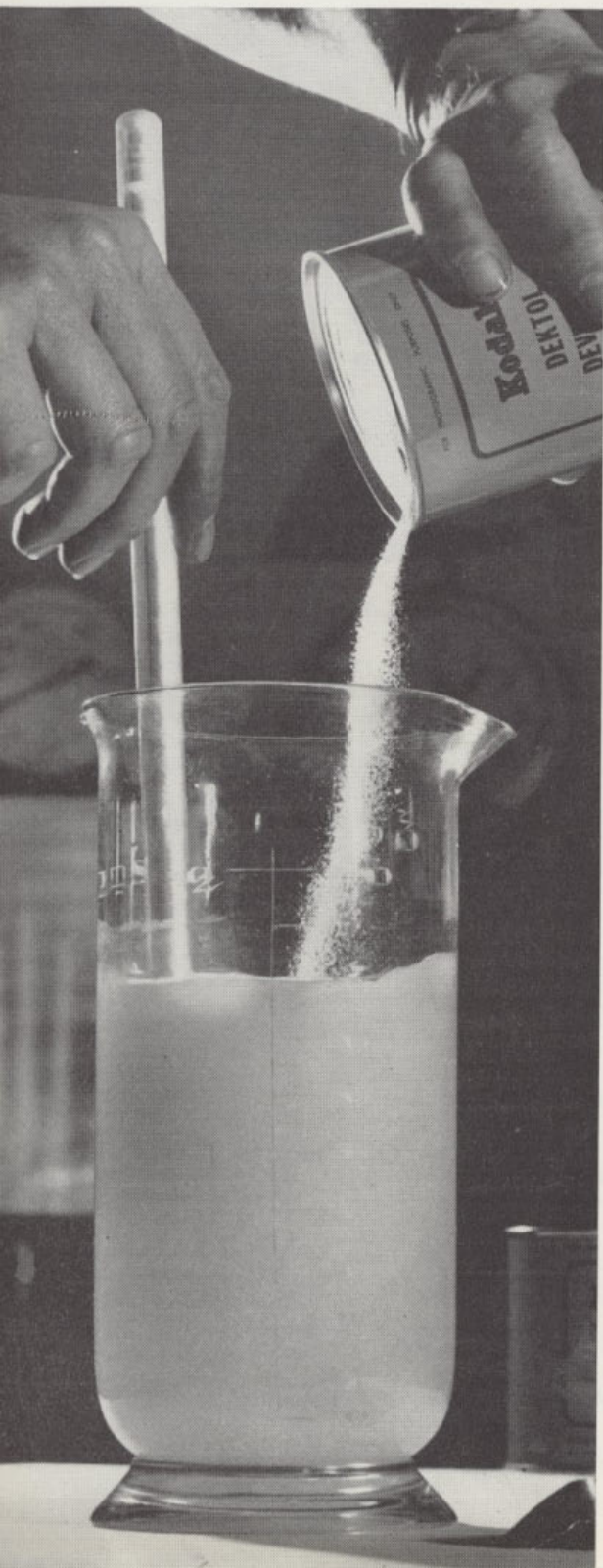
Donald Duck in "Sky Hammock"
Chip and Dale in "Flying Saucer Pilots"

Cowboys:

Hopalong Cassidy (William Boyd) in "The Cattle Rustler"



KODAK CHEMICAL PREPARATIONS



... are accurately and scientifically compounded to produce the best possible results when used in conjunction with Kodak Film, Plates, and Papers. Most preparations are single powders sealed in airtight moisture-proof containers—once the can is punched the powder pours freely and dissolves easily. Kodak Chemical Preparations are machine-mixed to ensure that every can maintains its efficiency and consistency year in, year out.

KODAK PREPARED DEVELOPERS FOR FILMS AND PLATES

Kodak Developer D-19—Ideal for the needs of the technical photographer. It is a rapid, long-life, clean-working developer designed to give negatives of high contrast in 4 to 5 minutes.

Prices: $\frac{1}{2}$ gal. 6.0; 1 gal. 10.3.

Kodak Developer DK-50—A favourite with both amateur and professional workers, it is recommended for processing sheet films and plates in trays or open tanks.

Prices: $\frac{1}{2}$ gal. 3.9; 1 gal. 5.9; 5 gals. 18.9.

Kodak Developer DK60a—For general use in developing roll films, sheet films and plates. It holds well the original emulsion speed and produces high quality results in 5 to 7 minutes development.

Prices: $\frac{1}{2}$ gal. 5.3; 1 gal. 9.0.

Kodak Developer D-72—Is an all-purpose rapid elon-hydroquinone developer suitable for use with all papers, films and plates.

Prices: 20 oz. 3.0; $\frac{1}{2}$ gal. 6.9; 1 gal. 12.0.

Kodak Developer D-76—An excellent developer for all types of roll-film — it gives finest grain with the maximum emulsion speed for normal contrast; and the maximum shadow detail in fine grain films.

Prices: 20 oz. 3.0; $\frac{1}{2}$ gal. 6.0; 1 gal. 10.6.

Kodak Microdol Developer—A microscopically fine-grain developer, ideal for films necessitating extreme enlargement. It works quite fast, forms no scum, holds sludge to a minimum and gives uniform performance.

Prices: 20 oz. 3.0; $\frac{1}{2}$ gal. 6.9; 1 gal. 12.0.

Kodak Tropical Developer—Allows the efficient processing of films to be carried out at temperatures up to 101 deg. F. It keeps well and has a good capacity when stored at 75 deg. F. or lower.

Price: $\frac{1}{2}$ gal. 6.9.

KODAK PREPARED DEVELOPERS FOR PAPERS; ALSO

TRAY DEVELOPMENT OF NEGATIVE MATERIALS

Kodak Universal M-Q Developer—Conveniently packed for that quick job of developing or printing just a few films. Makes 12 ozs. of solution for tray development.

Prices: 12 oz. pkts. 0.9; carton of 24 pkts. 18.0.

Kodak Versatol Developer—Highly successful concentrated liquid developer for universal use with films, plates and papers. Versatol is convenient, clean and economical to use.

Price: 8 oz. 6.3.

Kodak Dektol Developer—Ideal for large-scale development of all types of contact and enlarging papers; also suitable for negative materials. Dektol has a high print capacity, keeps well and minimises sludge.

Prices: 20 oz. 3.0; $\frac{1}{2}$ gal. 6.9; 1 gal. 12.0.

Kodak Liquid Developer—A concentrated all-purpose developing solution.

Price: 8 oz. 3.0.

Kodak Bromesko Developer—For use with Bromesko Paper — yields rich warm-black tones by direct development and gives maximum warmth of image.

Prices: $\frac{1}{2}$ gal. 6.0.

KODAK PREPARED HARDENERS AND FIXERS

Kodak Acid Fixer (with Hardener)—An improved, long-lasting, high-capacity fixer which includes the hardener in the one powder. When dissolved in water makes a first-class fixer for use with films, plates, bromide and contact printing papers.

Prices: 8 oz. pkt. 1.0; 20 oz. 3.0; $\frac{1}{2}$ gal. 7.3; 1 gal. 12.9.

Kodak Acid Fixer (Non-Hardening)—Specially recommended for use with papers. Not designed for use with films (which require a hardening-type fixer).

Prices: 20 oz. 2.3; $\frac{1}{2}$ gal. 5.3; 1 gal. 9.9; 3 $\frac{1}{2}$ gals. 30.0; 4 gals. 33.0.

Hypo—An all-purpose fixing chemical for preparing non-hardening and hardening fixing solutions.

Prices: 1 lb. 2.0; 7 lb. 12.9.

Kodak Liquid Hardener—When added to 25% hypo solution to make acid-hardening fixing baths it provides the necessary acidity and hardening qualities.

Price: 8 oz. 3.0.

Kodak Tropical Hardener—A chrome alum bath recommended as a rinse between development and fixation during hot-weather processing of films and plates. Should be used in conjunction with Kodak Tropical Developer and Kodak Acid Fixer.

Price: $\frac{1}{2}$ gal. 3.6.

KODAK SPECIAL PROCESSING AIDS

Kodak Anti-Fog—Added to a film or paper developer it helps to suppress fog and increase contrast in materials which tend to fog from age. Of great value in high-temperature processing.

Price: to make 40 oz. 2.3.

Kodak Anti-Calcium—Prevents or minimises the formation of precipitates resulting from the presence of calcium in most tap water.

Price: 4 oz. 3.0.

Kodak Chromium Intensifier—An efficient preparation for intensifying weak, flat negatives.

Price: set of 2 tubes 3.9.

Kodak Dead Black—A thoroughly black solution for painting metal parts, both inside and outside, of cameras. Suitable for general use.

Prices: 2 oz. 3.0; 10 oz. 9.0; 20 oz. 15.0.

Kodak Glazing Solution—For preparing glass and ferro-type plates for giving a brilliant surface to glossy papers. Prevents prints from sticking to glazing plates.

Prices: 4 oz. 2.9; 20 oz. 9.3.

Kodak Hypo Clearing Agent—Excellent wherever a shortage of water exists — saves both water and washing time. Effectively removes hypo with only five minutes washing for films, and ten minutes for papers. In easy-dissolving powder form to make one or five gallons.

Prices: 1 gal. 3.0; 5 gals. 11.3.

Kodak Indicator Stop Bath—A concentrated powder stop bath which, when diluted with water for use, signals that it has reached the point of exhaustion by turning purplish-blue (dark under safe-light illumination).

Prices: 8 oz. 0.9; 20 oz. 2.3; 1 gal. 6.9.

Kodak Lens Cleaner—Keeps lenses clean; prevents growth of fungus.

Prices: 1 oz. 2.0; 4 oz. 3.6.

Kodak Opaque—A quick-drying, perfectly opaque liquid medium for spotting or blocking out negatives or lantern slides.

Prices: $\frac{1}{2}$ oz. tube 2.0; 2 oz. tube 3.0.

Kodak Photo-Flo—Prevents water marks and streaks by decreasing the surface tension of water so that it runs off evenly from film surfaces.

Price: 4 oz. 2.9.

Kodak Odourless Sepia Toner—Gives pleasant and permanent sepia tones, is rapid in action and extremely simple to use. It is a bleach and re-develop process.

Price: two 3 oz. bottles 4.3.



PHOTOGRAPHIC BOOKS . . .

to help you learn more about the fascinating hobby of photography. Here are just a few selections from the wide range:

All In One Camera Book (W. D. Emanuel)

Puts the whole of photography in a nutshell. Covers lens, filters, colour films and dozens of other features that will set you on the path to good photography.

PRICE: 15.9.

All The Photo Tricks (E. Smith)

Gives invaluable hints on how you can get startling pictorial effects, fantastic variation of reality and amusing deceptions of the human eye, through trick photography.

PRICE: £1.6.3.

British Journal Almanac

World-famous annual containing illustrations of the works of leading exhibitors, a glossary of chemical and photographic terms, many pages of formulae for various processes, and special articles on current topics, processes and researches. Available with paper or cloth cover.

PRICE: PAPER 15.0, CLOTH 18.9.

Bigger And Better Enlarging (D. Nibblelink)

All techniques necessary to make a good enlargement are covered, results are analysed from both the artistic and technical viewpoints, and step-by-step instructions are given on how to make good pictures even better.

PRICE: £1.12.3.

Colour Photography In Practice

(D. A. Spencer)

Is literally "The Bible" of colour photography — covers every aspect from explaining the colour spectrum, exposure, processing to making colour prints. Contains a wealth of knowledge to suit the most advanced colour photographers.

PRICE: £4.2.0.

Developing (C. I. Jacobson)

Contains two hundred formulae and tables, with genuine advice on their practical use and basic data of their theoretical background.

PRICE: £1.9.3.

Enlarging (C. I. Jacobson)

Helps professionals and amateurs alike to judge negatives and to choose apparatus, paper and chemicals all of which are essential for successful enlarging.

PRICE: £1.6.3.

Exposure (W. F. Berg)

Helps you to pick the right tools and materials, suit your filters to your film and your subject, and how to determine the correct exposure.

PRICE: £1.11.6.

Focal Photo Guides

This "All About" series is illustrated with the world's best photographs and written by the world's best photographic authors. Some of the 76 books in the series are: All About Filters, Exposure, Composition, Processing, Colouring, Photographing Animals, People, Selling Photographs, Sports and Games, Pictures in Town, Children Outdoors, Cameras, Cats and Kittens, Dogs and Puppies, Mother and Child, Lighting for Glamour, Flash, Night Photography, Contact Prints, Taking Baby, Taking Weddings, Print Finishing, Taking Colour, Building Your Own Enlarger, Making Camera Gadgets, Processing 35mm. Film, Taking Parties, Travelling with your Camera, Photographing Shows, Great Occasions, etc.

PRICE: 3.9d.

How To Make Good Pictures (Kodak Ltd.)

Tells everything about amateur picture making from pressing the button to mounting the finished print. It is clearly and simply written and profusely illustrated with first class pictures and diagrams. A "must" for every photographer's library.

PRICE: 11.6.

Lighting For Photography (W. Nurnburg)

Tells of the technical roots of artificial lighting, reveals the advantages and limitations of different light sources, sketches the principles of their practical use, and gives countless suggestions as to their individual application.

PRICE: £1.11.6.

Making An Enlarger (Hugo van Wadenoyen)

Gives efficient designs for eight enlargers, with numerous adaptations and refinements, based on materials available and suitable for easy construction.

PRICE: 6.9.

My Way With The Miniature (L. Vining)

Advises the 35mm. enthusiast all about: focusing, exposure, filters, choice of equipment, processing methods, plus many other interesting and important subjects.

PRICE: £1.9.3.

Photographic Optics (Arthur Cox)

A photographer should be able to discriminate between lenses just as he knows how to choose films or filters. This book tells the advantages and disadvantages of modern lenses and explains how they may be used to their best advantage.

PRICE: £1.6.3.

Photo-Amateur's Pocketbook

Is a pocket sized manual full of facts and figures. It contains a brilliant pictorial survey, a condensed technical reference library plus a diary section and a register for data entries.

PRICE: 9.0.

Photo-Flash In Practice (G. Gilbert)

Tells how the flash works, how to work it and with what ends in view. Contains 304 fully-illustrated interest-packed pages.

PRICE: £1.6.3.

The Twin Lens Reflex Camera Companion

Fully explains twin lens technique both to those who have little photographic experience and to those who look for advice.

PRICE: £1.6.3.

Straightforward Developing

(L. A. Mannheim)

Is written in a clear and simple style to teach the beginner the fundamentals of the process. Clever illustrations lead the reader right from equipment to retouching the negative.

PRICE: 7.6.

Straightforward Print Making

(L. A. Mannheim)

It is a simple job; this book tells you equally simply in down-to-earth words and many illustrations how to go about it.

PRICE: 7.6.

How to Process (L. Wheeler)	11	3d.
How to Take Snapshots by Flash	4	0d.
How to Take Photographs (Collier)	1 10	0d.
How to Write Commentaries (Focal Guide)	11	3d.
Instruction Book 16mm. Cinevox Projector	7	0d.
Instruction Books for Kodak and Ensign Cameras	1	0d.
Kodachrome and Ektachrome from all Angles (F. Bond)	4 16	6d.
Kodak Black-and-White Films	5	6d.
Kodak Colour Correction Filters Data Book	1 1	0d.
Kodak Colour Films (E.K. Co.)	8	3d.
Kodak Colour Handbook (E.K. Co.)	2 11	6d.
Kodak Enlarging Technique Data Book	3	6d.
Kodak Filters and Pola Screens	5	6d.
Kodak Flash Technique (E.K. Co.)	5	6d.
Kodak Lenses, Shutters and Portra Lenses	5	6d.
Kodak Photoguide (Kodak Ltd.)	15	9d.
Kodak Plates Book	2	0d.
Leica Guide (W. D. Emanuel)	11	3d.
Lenses in Photography (E.K. Co.)	1 12	3d.

KODAK DATA BOOKS

... best-selling technical handbooks written by Kodak experts



Kodak Processing and Formulae

Completely up-to-the-minute with all the latest on processing principles. It tells: How a developer works; factors affecting time, temperature, agitation, activity; replenishers; stop baths, fixers, tank processing; paper development. 28 pages of formulae. **PRICE: 3.6.**

Kodak Films

Prepared for the convenience of photographic craftsmen who desire more than a superficial knowledge of the Kodak range of negative materials. Fifty-two pages packed with valuable information on film properties, handling, etc., plus tables on exposure, development, and sensitometric data. **PRICE: 3.6.**

Kodak Papers

Thirty-six attractively illustrated pages crammed full with up-to-date authoritative, technical and general

Better Kodachrome Pictures

A production that is all-Australian both in data and illustrations. It tells how to take better pictures in colour with Kodachrome film under local conditions. This book is a practical, straightforward guide for the beginner; yet it contains all the information that would normally be required by both the beginner and advanced enthusiast. It explains in easy-to-follow sequences the variations in subject type and lighting conditions you are likely to encounter, and how to adjust the camera to meet every situation—and what is more, illustrates them in full colour. For those who prefer to take colour pictures by a simpler method it shows how to set the controls of the camera so that the pleasures of colour photography can be enjoyed in the carefree manner possible with a box camera. **PRICE: 5.6.**

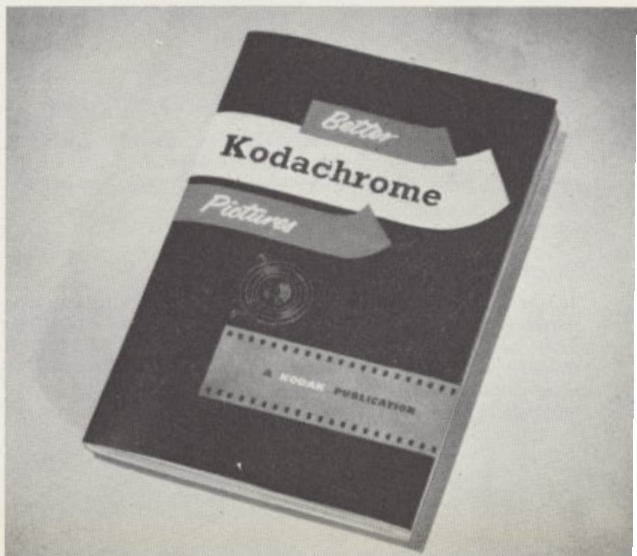
information on using Kodak Sensitized Papers. It covers characteristics, selection and use of Kodak papers, plus print faults, stains, mounting, etc. **PRICE: 2.6.**

Flash Technique

Packed with detailed information on the modern fascinating technique of making pictures by flash. Covers all types of methods such as: Flash away from the camera, indirect flash, multiple flash, flash with colour, exposures for flash. **PRICE: 3.6.**

Enlarging Technique

A "digest" on the art of enlarging negatives — of vital interest to both the novice and the expert. It outlines the technique of print enlarging in simple, well-explained terms — particular attention is devoted to the finer aspects of masking, combination printing, toning and finishing. **PRICE: 3.6.**



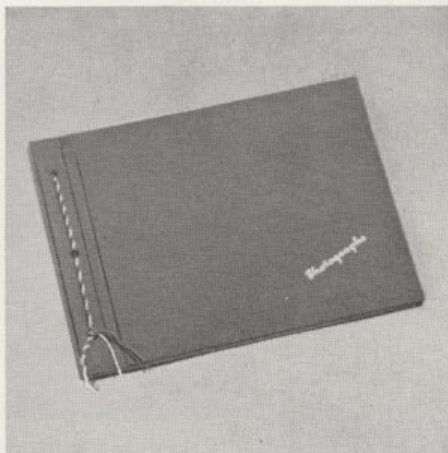
Protect Your Snapshots with KODAK ALBUMS

... for Kodak Albums help you to preserve for tomorrow the fun of the snapshots that you make today. They provide you with an easy-to-keep yet permanent picture record that you will enjoy and treasure in the years ahead. Those illustrated here are just a few selections from the wide range of Kodak Albums available.

GLEN ➤

Neat and attractive in a range of rich-looking leatherette covers in various colours. Of loose-leaf construction and firmly secured with a tasselled silk cord. The cover is gold stamped "Photographs". 20 grey leaves. Size 10½ x 8½in.

PRICE: 15.9.



◀ RIVIERA — BABY

Keeps all your baby's pictures together for a lifetime of "looking back". Has stork design and the words "Our Baby" embossed in gold on the front cover — both covers are plastic covered and washable. With tasselled cord binding it is available in pink or blue. Spare leaves are also available. 25 leaves. Size 10½ by 9in.

PRICE: £1.9.6



CAMERA STUDIES ➤

Its attractive coat-of-arms cover design adds a touch of distinction, thus making it ideal for gift purposes. This theme is further enhanced by the gold lettered "Camera Studies". It is available in a range of assorted coloured covers which are eyeletted and corded to match. 20 blue-grey leaves. Size 4: 9½ x 10½in.

PRICE: £1.5.0



SNAPSHOT ▲

A handy medium-size album for snapshot prints and small enlargements. Has black leaves, stiff card covers and strap and buckle binding. In a range of colours in one size only. 20 leaves. Size 6½ by 9½in.

PRICE: 9.0.

Photo Studies —

No. 1 1 5 3

No. 3 1 15 3

Skyline — No. 1 17 6

No. 2 1 1 3

Ormond Series 19 9

Regal —

No. 1 18 3

Spare Leaves (12) 5 10

No. 3 1 6 6

Spare Leaves (12) 7 6

Strand Special 3 7 9

Royal 1 19 6

Spare Leaves (12) 3 7

Renown —

No. 1 1 10 0

Spare Leaves (24) 6 2

No. 2 2 2 6

Spare Leaves (24) 7 9

No. 3 2 5 0

Spare Leaves (12) 4 6

Austral Negative

Album —

2½" x 3½" 18 6

24mm. x 36mm. 1 5 9

TURN YOUR SNAPSHOTS INTO MASTERPIECES WITH A **FRAME** FROM KODAK

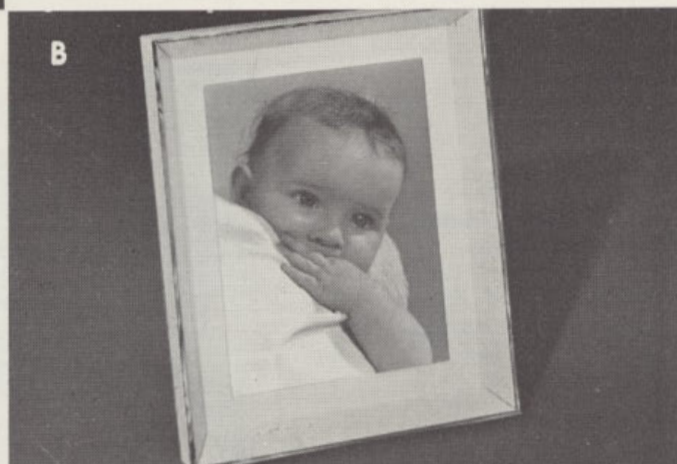
A. PARKER. In three styles — shadow box, decorative corners and plain. Economical all-wood frames with slide-in back, reversible strut, and cut-out mount. In gold, grey and ivory.

B. ARTLINE. Tastefully modern shadow-box, all-metal frame; in dove grey with "silver" front rim. Has slide-in back, cut-out mount and two-way strut. Size 8 by 10in.

C. TODD. Miniature Metal. For miniature portraits with gold figured frame, convex glass, and reversible strut. In oblong, oval, and round sizes.

D. REYNOLDS. Neat metal frame with floral corner pattern — in antique gold and nickel. With convex glass, mount, and reversible strut. 5 sizes.

E. HOGARTH. Smart brass frame in gilt or chrome. With convex glass, cut-out mount, reversible strut. 5 sizes.



Parker —

Colour Print:

3½" x 5" 7 10

Shadow Box:

3½" x 5½" 8 10

4½" x 6½" 10 6

6" x 8" 12 0

8" x 10" 14 3

10" x 12" 17 6

12" x 15" 1 6 3

16" x 20" 1 14 8

Decorative Corner:

6" x 8" 8 8

7½" x 9½" 10 0

8" x 10" 11 0

9" x 12" 13 0

10" x 12" 13 1

Plain:

Postcard

4" x 6" 5 0

6" x 8" 6 7

7½" x 9½" 8 9

8" x 10" 8 8

9" x 12" 11 0

10" x 12" 11 0

Artline:

8" x 10" 19 6

Todd —

Oblong:

2" x 2½" 6 4

2½" x 3½" 7 0

3½" x 4½" 8 6

Oval:

1½" x 2½" 12 4

D

2½" x 3½" 14 8

3½" x 4½" 17 6

4" x 6" 18 10

6" x 8" 1 10 6

Round:

3" x 3" 14 6

Reynolds —

2½" x 3½" 9 9

4½" x 6½" 15 0

6" x 8" 16 1

8" x 10" 18 9

10" x 12" 1 4 0

Hogarth —

3½" x 5½" 15 4

4½" x 6½" 16 1

6" x 8" 18 4

8" x 10" 1 4 0

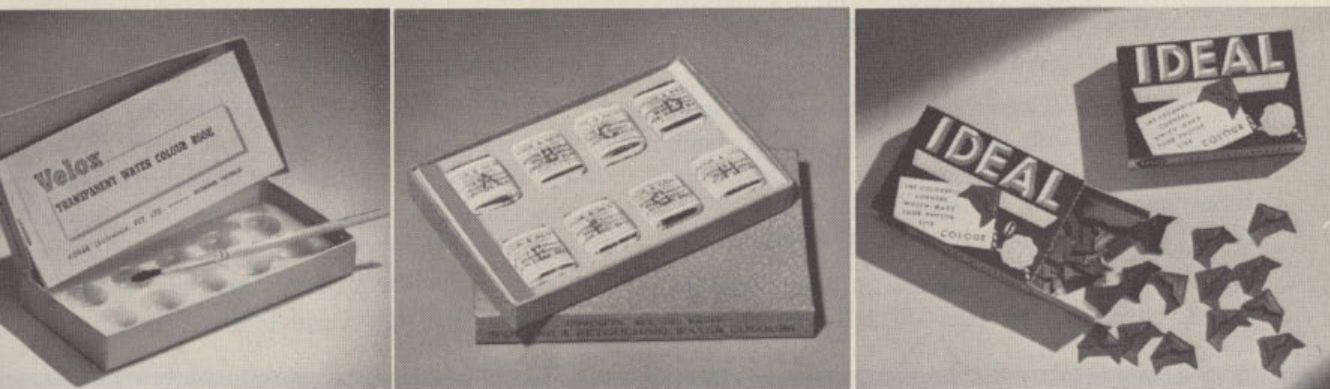
10" x 12" 1 8 10



A

B

C



D

E

F

Colouring, Retouching, and Mounting

(A) **Kodak Photo Paste** — Excellent for mounting snapshots in albums — no bulges, no curled corners. Prints lie flat and will not cockle or stain.

Prices: 2 oz., 3.6; 4 oz., 3.0; 16 oz., 5.0.

(B) **Morgan Photo Oil Colour Outfit** — Has 14 different colours capable of producing almost any shade or tint. Also has reducing medium and an instruction leaflet.

Price: £1.16.9.

(C) **Austral Transparent Water Colours** — Excellent for all colouring purposes. In sheets of stamps of 10 different colours — each stamp dissolves in water to make dye. With instructions.

Price: 2.10.

(D) **Velox Water Colour Outfit** — Colours are quickly mixed and easily applied, with excellent results. Outfit comprises Velox Water Colour Book (twelve different colours with instructions), palette and brush. Extra books and spare leaves are available as replacements.

Price: 10.0 (Book only 5.3).

(E) **W. & N. Spotting and Retouching Water Colours** — For the removal of scratches or dust marks on prints, or the reduction of flesh shadows, etc. Available in sets of eight cakes of various blacks and browns.

Price: 13.9.

(F) **Ideal Photo-Corners** — For mounting prints in albums. Are strongly made and sure to stick quite fast. Available in a wide range of colours. In boxes of 100.

Price: 1.0.

W. & N. Photo Tints — Are perfectly pigmented, highly concentrated, easily controlled and applied. Outfit No. 1 — a water colour set containing eight colours. Outfit No. 2 — an oil colour set containing eleven colours and other necessary accessories for successful hand colouring.

Prices: No. 1, 12.8; No. 2, £1.10.1; No. 3, £1.17.11.

W. & N. Spotting Brushes — Accurately made from selected sable hair firmly set in a nickel mount; wooden handle. In a range of sizes from No. 00 to No. 6.

Prices: From 2.11.

Johnson Pen-Nib Trimmer — An invaluable yet economical outfit comprising twenty nibs and one holder. The nibs have a razor sharp cutting edge for trimming prints.

Price: 11.0.

Kodak Oil Medium — A very light application over the print prepares the surface for colouring with pencils, such as Stabilo Pencils. Excellent as an aid to blending colours.

Price: 1.3.

Kodak Retouching Medium — This holdfast transparent retouching medium is prepared from a highly approved formula for use with either varnished or unvarnished negatives.

Price: 1.6.

Kodak Liquid Glue — Strong all-purpose glue; ideal for mounting prints, glueing leatherette to cameras and all such minor darkroom jobs. In 2 oz. tube.

Price: 2.0.

Enjoy the magic of movies . . .

KODAK HOME MOVIE EQUIPMENT

You make snapshots, of course. Lots, perhaps, in colour. And it's wonderful, indeed, to have these highlights of your life.

But look around you — that young dynamo you call "son"; that whirlwind you call "daughter". Have you ever known them to walk when running is so obviously the only sensible way to get places. Or remain completely still, try though they may? Even then there's a giggle . . . a grin . . . an ear to scratch.

For that's how children were meant to fill their colourful never-still world. Life just won't stand still for you — or for your camera. And that's where movies have a magic of their own . . . for all picture makers . . . with all subjects!

And movies tell such a wonderful story. Just as you'd tell it step by step — a living, moving,

colourful life-like story. And with Kodak's modern movie equipment movies are as easy to make as snapshots. So inexpensive too. With a 25 ft. roll of 8mm. Kodachrome Film you can shoot anything up to 40 scenes or so (enough say for the movie highlights of a week-end) — a running cost of a little more than one shilling a shot. And with each reel first cost is last cost. When exposed, the film is processed by Kodak without extra charge and is returned to you post free ready for projection. Ask your Kodak dealer to show you the movie equipment described in this catalogue. Remember, the best time to start a personal movie diary is now. Every day that goes by, you're missing scenes and incidents you'd later give the world to have filmed.

KODAK MOVIE FILMS

KODAK 8mm. MOVIE FILM

The ideal movie film size for true to life home movies. The same full colour film as supplied for 16mm. cameras, it takes a smaller picture . . . more pictures on the same length of film. You cannot therefore project 8mm. movies as large as 16mm.; but you can show 8mm. movies on screens up to 4 feet or more in width. 8mm. film, of course, costs less than 16mm. — yet is easily adequate for wonderful home shows.

KODAK 16mm. MOVIE FILM

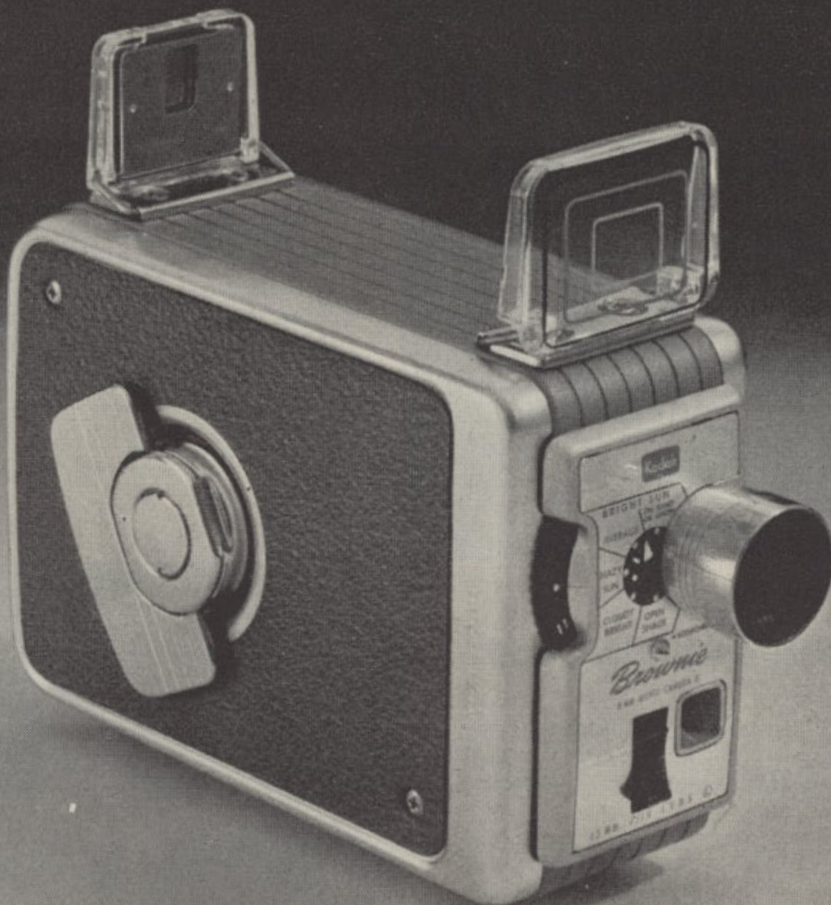
The larger images on 16mm. film can be shown on screens up to 8 . . . 10 . . . 12 feet in width. And on smaller living-room screens 16mm. movies will naturally be somewhat sharper than those from 8mm. film. Too, while there are versatile 8mm. cameras, there are more versatile 16mm. cameras.

In brief, while 8mm. movies are wonderful indeed for personal film records, 16mm. movies are even better in the home . . . far better for

large-group showings at clubs, in small auditoriums.

PRICES:

8mm. Kodachrome Movie Film (Type A or Daylight) 25 ft. roll including processing	£2.3.10
8mm. Kodachrome Magazine Movie Film (Type A or Daylight) (25 ft.) including processing	2.19.3
8mm. Kodachrome Movie Film (Daylight) for Paillard Bolex Camera — 100 ft. Roll including processing	7.17.6
16mm. Kodachrome Movie Film (Type A or Daylight) 50 ft roll including processing	3.4.7
16mm. 100 ft. Roll (Single or Double Perforation) including processing	5.10.4
16mm. 200 ft. Rolls (Single or Double Perforation) including processing	11.0.8
16mm. 400 ft. Roll (Single or Double Perforation) including processing	22.1.4
16mm. Magazine (50 ft.) including processing	3.13.8



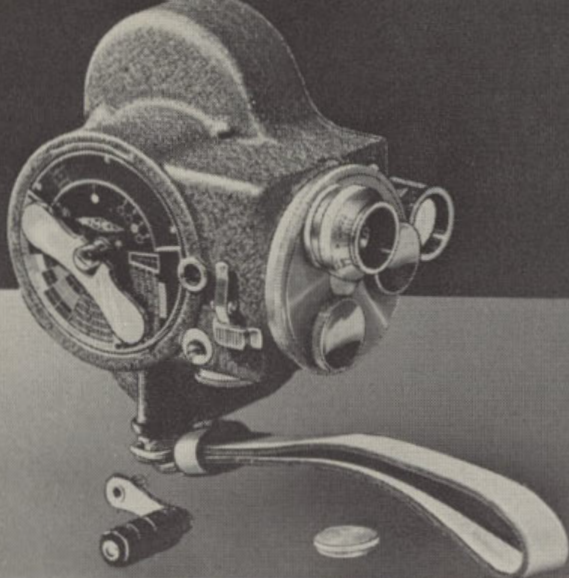
BROWNIE MOVIE CAMERA MODEL II

A new and improved model of the popular 8mm. Brownie Movie Camera. This inexpensive movie camera provides all the fun of making sparkling 8mm. full-colour home



PRICE:
£25/-/-

movies with the simplicity of taking black-and white snapshots. All the user has to do is load, set the lens aperture pointer (according to the lighting conditions — bright, dull, etc.), and press the button. A fast Lumenized 13mm. Cine Ektanon f/1.9 lens ensures bright sharp pictures. Sprocketless loading makes film threading easy and straightforward — film is simply slipped into the gate and onto the take-up reel. Other features are: Long-running spring-driven motor; two-position exposure release; collapsible plastic viewfinder with parallax correction; easily read footage indicator; finger-tip click stop aperture control; and handy tripod thread. Of aluminium construction, it is complete with a solid hide, velvet lined compartment case. Loads with double-run Kodachrome Movie Film.



EMEL MOVIE CAMERA C94

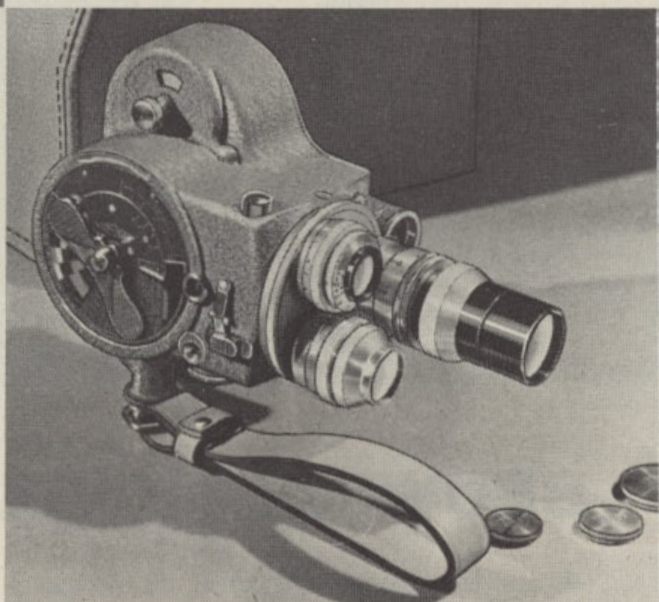
Smart, economical and easy to use, this model is the popular choice for simple yet versatile home movie-making. Has a high-grade 12.5mm. $f/1.9$ lens which is ideal for general use while the turret head is fitted to take additional lenses for "special" uses. Other features are three shutter speeds (8, 16 and 24 frames per second), and a parallax correction device for close up work. Complete with lens caps and strong leather wrist strap. Loads with double run 8mm. Kodachrome movie film.

PRICE: £97/13/-.

EMEL MOVIE CAMERA C93

Distinguished by its outstanding craftsmanship this precision camera will endow you with that "professional touch". With a turret head of three lenses (12.5mm. $f/1.9$; 23mm. $f/2.3$; and 50mm. $f/3.5$), plus five speeds (8, 16, 24, 48 and 64 frames per second) it is truly the finest in the 8mm. class. In addition, it features a single frame release, a frame counter, footage counter, and a telescopic two-tube viewfinder to give critical parallax correction. Complete with lens caps, leather wrist strap, and a de-luxe leather carrying case. Loads with double run 8mm. Kodachrome movie film.

PRICE: £173/5/-.

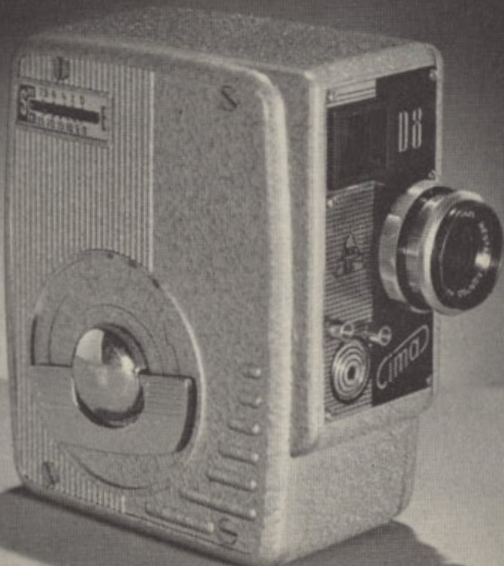


CIMA D8 MOVIE CAMERA

A high quality easy-to-use 8mm. movie camera. Has a colour-corrected hardcoated fixed focus 12.5 mm. Anastigmat Isco-Westarit $f/2.5$ lens, which is interchangeable with a telephoto lens. Other features are: film footage counter, cable release socket for single frame shots and sprocketless drive for easy film threading. Body is of all-metal construction with a smart grey lacquer finish. Loads with double run 8mm. Kodachrome Movie Film.

PRICE: £31/17/6.

Leather Case: £4/11/-.



MOVIE MAKING ACCESSORIES

Austral Carrying Case

A "must" for all owners of C94 and C96 Emel Cameras — protects your camera from weather, knocks and scratches. Made from sturdy leather and lined with red velvet, it has a special compartment for film, etc. It is also fitted with a strong metal clasp and has two leather carrying straps.

PRICE: £5/11/-.

Palec PE3 Exposure Meter

Extremely sensitive to all lighting conditions — incorporates two brightness ranges which adjust themselves automatically whether the light is bright or very dull. Gives direct readings for cine exposures from 12 to 96 frames per second. Has a shock-resistant meter movement. Weighs only 5½ ozs. Complete with safety wrist chain and leather case.

PRICE: £12/4/6.

Pass Cine Tripod

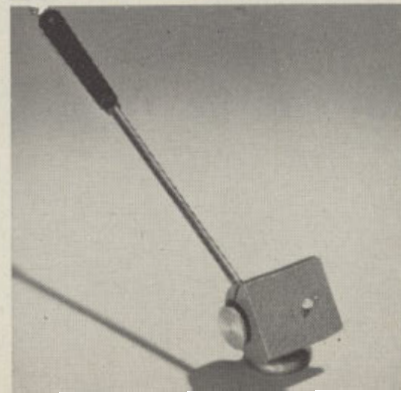
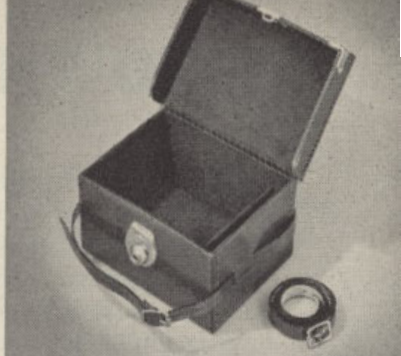
Combining the two prime essentials of a good cine tripod — rock steady support and smooth operation, the Pass tripod is ideal for all but the heaviest cine cameras. Conveniently light in weight, it provides the firm support and flexibility of operation that are essential to precision filming with either close-up devices or long focus lenses. The beautifully finished pan tilt top has a smooth gliding movement that ensures "velvety-smooth" panorams every time. The vertical tilting traverses through approximately 180° while the panning movement travels a complete circle. A convenient screw is located under the platform for storing the handle when not in use.

PRICE: £25/1/9.

Barton Pan Tilt Tripod Head

An inexpensive device that will add versatility to, and extend the scope of your tripod work — permits pans and tilts to almost any position; also facilitates framing and subject selection. It is of sturdy all-metal construction to ensure smooth and steady operation. Screws on to any standard tripod thread.

PRICE: £3/18/3.



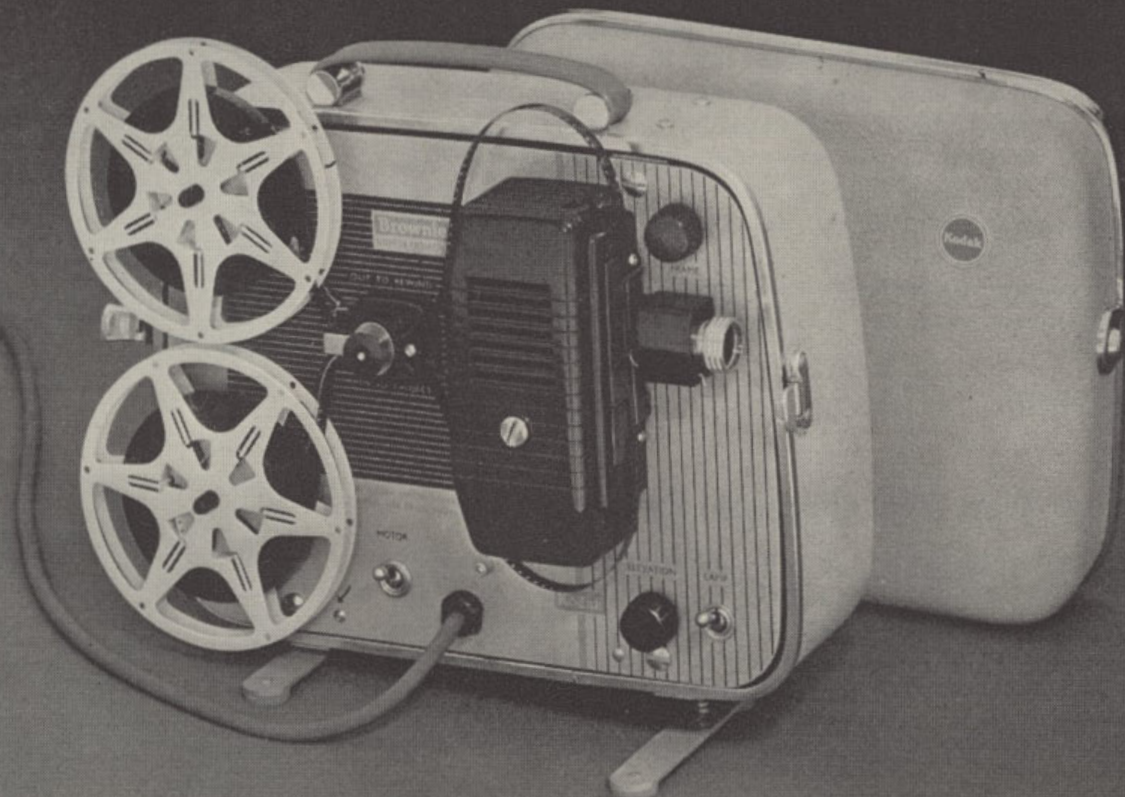
BROWNIE EIGHT-58 PROJECTOR

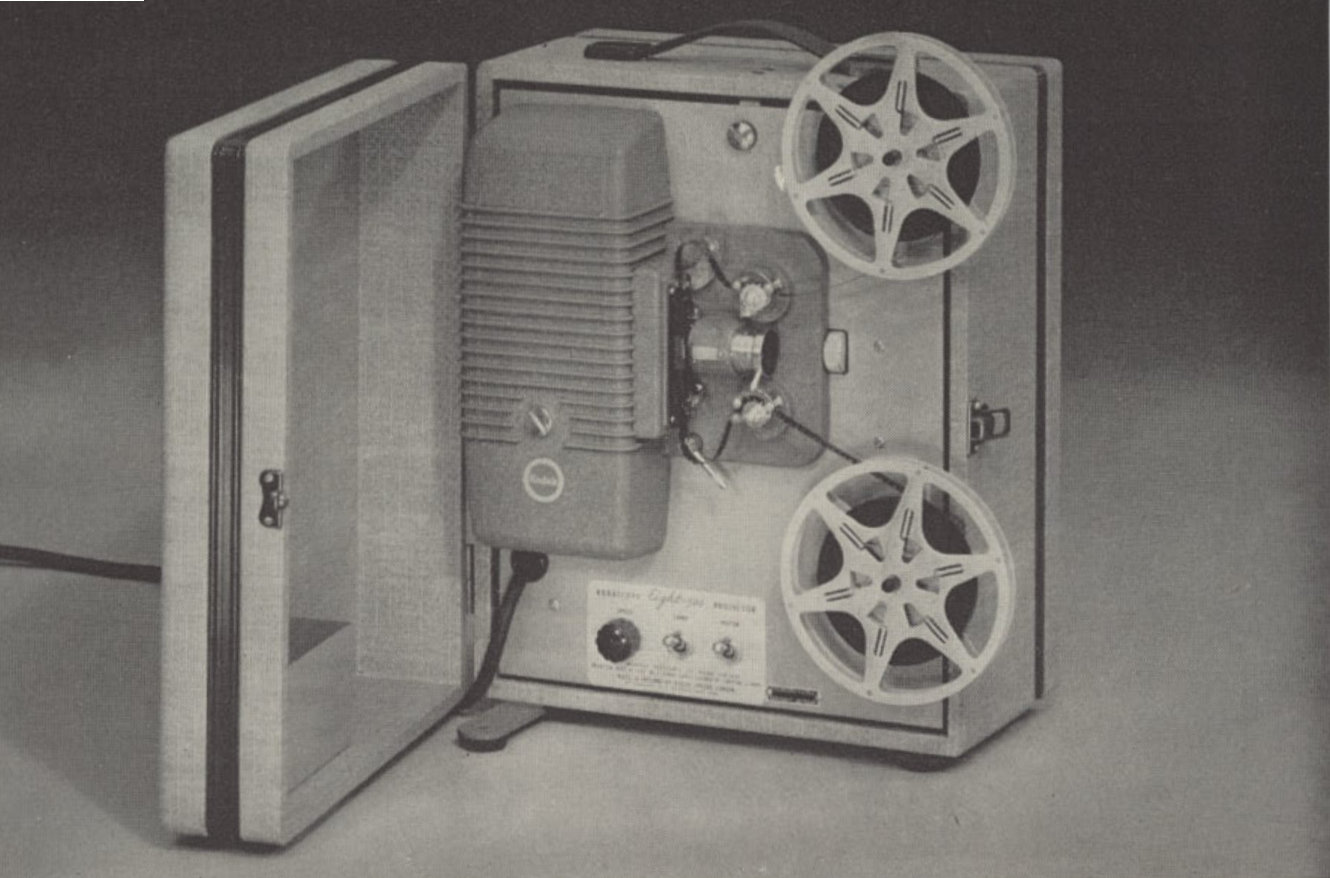
Simple-to-operate, highly efficient partner to the Brownie Movie Camera or any other 8mm. camera. The projector is neatly built into its own smart case, light and easy to carry. The revolutionary lamp and special lens give a large and brilliant screen image, e.g. 18 x 24 in. at 10 ft. or 30 x 40 in. at 15 ft. Film threading is quick and straightforward, using single sprocket; clear markings show the film path to be followed. Holds up to 200 ft. of 8mm. film. Power re-wind. Low operating temperature. Low current consumption means that it can be run quite safely off a normal A.C. lighting circuit; it can be adjusted to suit supplies from 200 to 250 volts. Combined motor/transformer saves weight and cost. Motor provides constant projection speed despite voltage fluctuations. Simple, positive framing controlled by knob above the projec-



tion lens. Gate quickly and easily dismantled for cleaning. Separate switches for motor and lamp. Elevation adjustment up to 10 degrees with positive lock. Nylon and oil-impregnated bronze bearing throughout requiring no oiling. 8½ ft. cable which can be stored quickly in the lid.

PRICE: £38.15.0





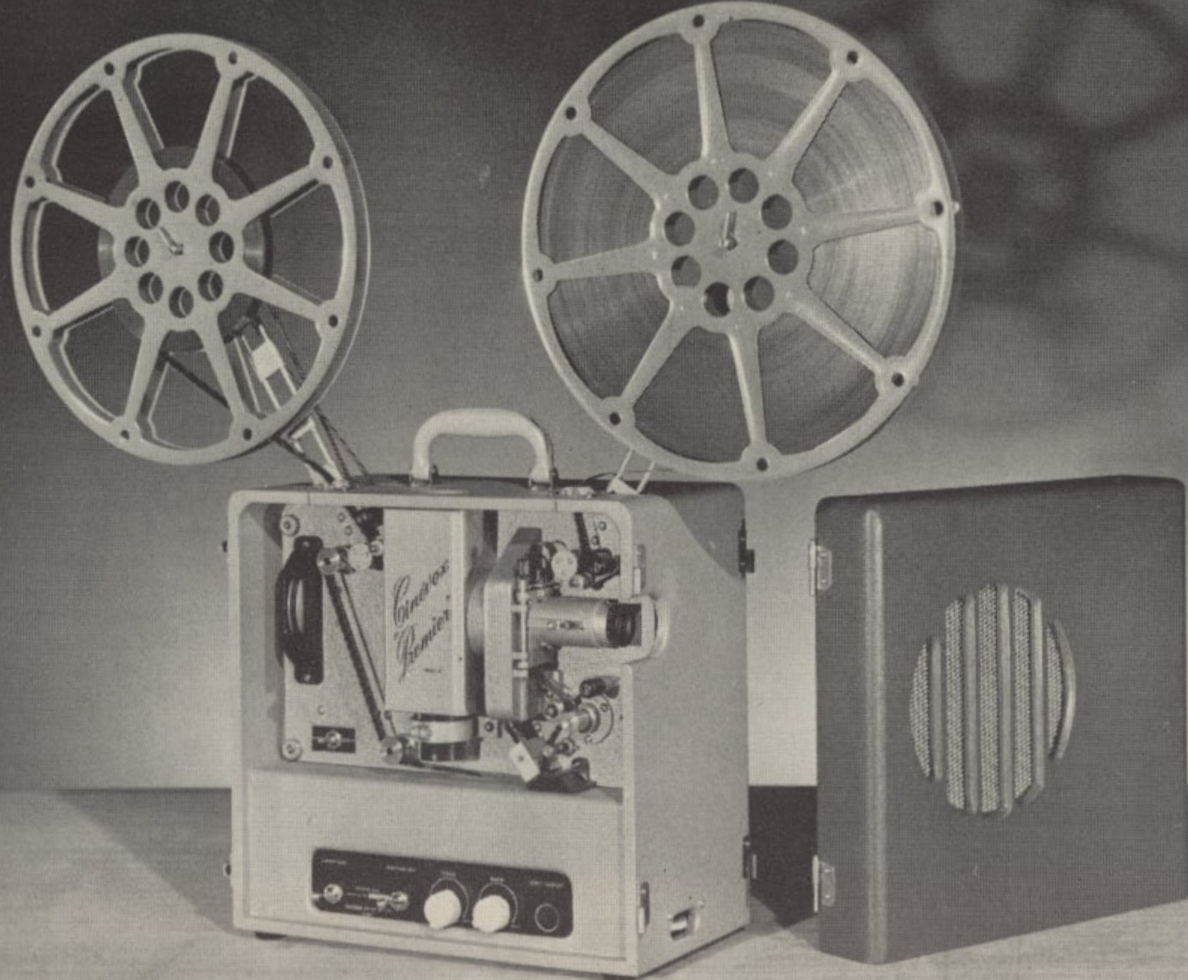
KODASCOPE EIGHT-500 PROJECTOR

A portable simple-to-use 500 watt 8mm. projector of superlative efficiency. The 1-inch lens, 500 watt projection lamp and the 'Lumenized' double condenser system assure a brilliant screen picture, crisp from corner to corner. A powerful but silent fan keeps the lamp and built-in resistor cool — the air

exhausts through a grill at the back of the case, away from the operator. Other features are: Rapid film threading, silent running, simple motor rewind, focusing by turning the lens mount, framing by moving a simple lever, capacity of 400 ft. of 8mm. film, retracting 9 ft. electrical lead and two screw feet that allow the projector to be raised seven degrees above horizontal. The projector is self contained in its own case which is made from finest quality wood covered with light-coloured "Vynide" material; in use the lid, which is designed to hold a spare lamp, a take up spool and a splicing outfit, is removed.

PRICE: £62.15.0





CINEVOX PREMIER PROJECTOR

16mm SOUND

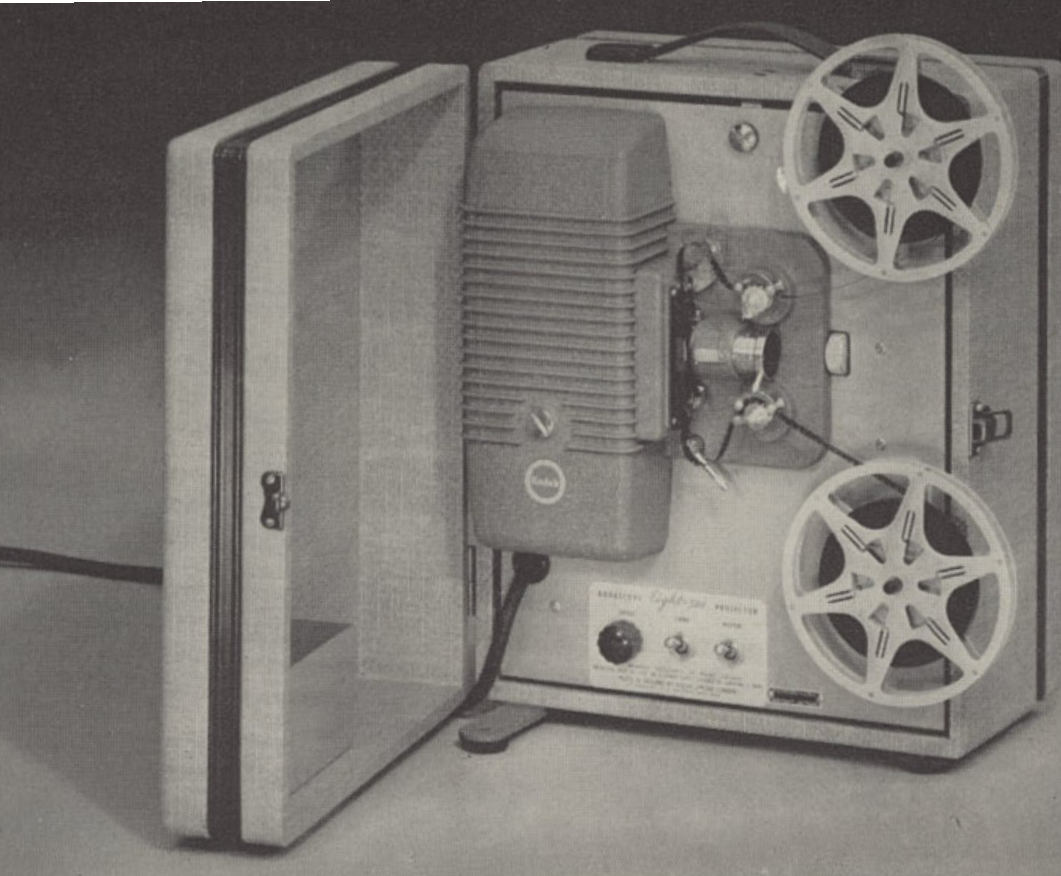
The Cinevox Premier is of entirely functional and simple design incorporating many unique features for brilliant screen projection with exceptional fidelity of sound reproduction. It comes complete — projector, speaker, reel, cable, etc. — in one single, handsome two-tone leatherette-covered case — the whole equipment weighing only 36 lbs. When opened, the case separates into two sections — the first containing the speaker and 40 ft. of speaker cable thus permitting the speaker to be placed adjacent to the screen; the main section contains the projector unit and the amplifying equipment which can be quickly assembled for use. Features are: 2 inch projection lens fully bloomed for maximum light transmission;

operates direct from 240 volt mains; sound output of 4 watts; "Oilite" bearings need no oiling; nylon gear transmission throughout ensuring long service with noiseless and smooth operation; specially designed claw and shutter mechanism to give a rock-steady screen image; 750 watt lamp; 8 inch speaker; variable tone control; 2,000 ft. film capacity; and special provision for microphone or long playing records.

PRICE: £222/-/-.

Also available is a battery model. Ideal for country areas it has all the features of the 240 volt model plus the added advantage of being completely self contained.

PRICE: £243/10/-.



KODASCOPE EIGHT-500 PROJECTOR

A portable simple-to-use 500 watt 8mm. projector of superlative efficiency. The 1-inch lens, 500 watt projection lamp and the 'Lumenized' double condenser system assure a brilliant screen picture, crisp from corner to corner. A powerful but silent fan keeps the lamp and built-in resistor cool — the air

exhausts through a grill at the back of the case, away from the operator. Other features are: Rapid film threading, silent running, simple motor rewind, focusing by turning the lens mount, framing by moving a simple lever, capacity of 400 ft. of 8mm. film, retracting 9 ft. electrical lead and two screw feet that allow the projector to be raised seven degrees above horizontal. The projector is self contained in its own case which is made from finest quality wood covered with light-coloured "Vynide" material; in use the lid, which is designed to hold a spare lamp, a take up spool and a splicing outfit, is removed.

PRICE: £62.15.0





REGAL CADET SCREEN

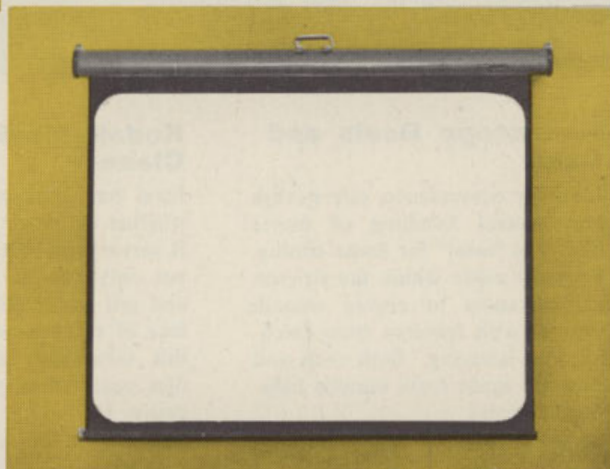
Provides an efficient, perfectly matte white screening surface. Its unique stand comprises a single-spring tension bar which fits into the top and bottom rollers to provide a firm, taut surface — an attached arm with a rubber vacuum cup keeps the screen perfectly erect. The complete screen rolls up to fit into a sturdy cardboard cylinder for protection during storage. Conveniently light in weight and compact for easy carrying. In two sizes.

PRICES: 30" x 40", £6/6/-; 36" x 36", £5/15/6.

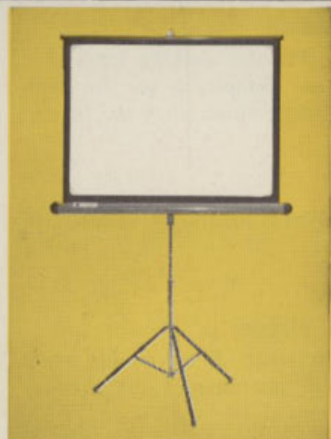
REGAL MONARCH SCREEN

An all-purpose portable hanging-type screen ideal for use in the home, clubs, classrooms, etc. Can be hung anywhere in a jiffy . . . or permanently fixed to the wall by the attachments provided — then simply pull it down like a roller blind and you're ready for screening. After use it neatly rolls up into its smart metal tube which gives maximum protection against dust and knocks. Available in various surfaces and sizes.

PRICES: Glass-beaded, 30" x 40", £9/8/9; 39" x 52", £12/10/9; 48" x 48", £13/-/-; Matte-white, 39" x 52", £9/5/6; 48" x 48", £9/11/9.



PROJECTION SCREENS & STANDS

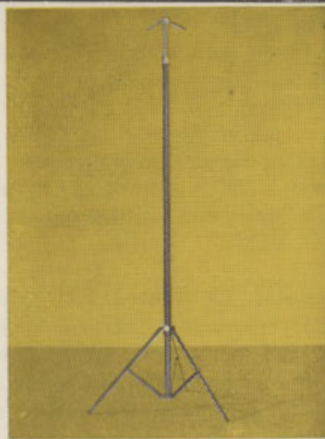


Hunter Starlight Screen

Built as one complete unit, this smart modern screen boasts a "crystal glass-beaded" projection surface which will add life and brilliance to all movies, black-and-white or colour.

For storage, the screen surface rolls up into its streamlined protective tube; for use it unrolls and is clipped onto the extension arm which keeps it flat and taut. The protective tube is permanently fixed to the tripod base which folds up into a compact unit for handling or storage.

PRICES: 30" x 40", £11/17/-; 40" x 50", £15/14/-; 48" x 48", £17/2/-.



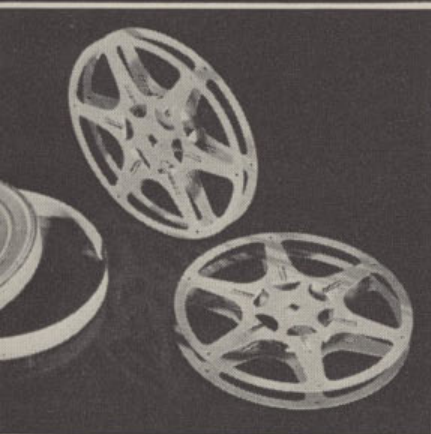
Regal Senior Screen Stand

A sturdy all-metal screen stand for use with hanging type screens, such as the Regal Monarch. Ideal for clubrooms, schools, churches, halls, or any large audience

screenings where an elevated screen is desirable, or where the use of other screens is not practical. Adjustable to a height of ten feet it folds up for easy transport and storing. Finished in grey enamel with chromium plating on those parts frequently handled.

PRICE: £11/0/6.

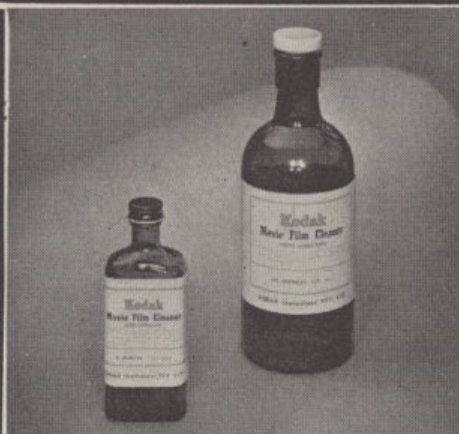
PROJECTION ACCESSORIES



Kodascope Reels and Cans

Ideal for convenience, safe storage and general handling of movie film — a "must" for home editing. Precisely made within the strictest of tolerances to ensure smooth running with freedom from catching and jamming. Both reels and cans are made from durable lightweight metal.

PRICES: 8 mm. 200 ft. 12/6; 400 ft. 16/6; 16 mm. 400 ft. 18/-; 1,600 ft. 28/7.



Kodak Movie Film Cleaner

Ideal for all types of movie film whether colour or black-and-white. It serves a double purpose in that not only does it clean away dirt and grit but it also coats the surface of the film with lubricant — this eliminates stickiness as the film passes through the gate and causes less sound distortion as it passes over the sound head.

PRICES: 4 oz., 7/6; 20 oz., £1.10.0.



Regal Projection Stand

Sturdily constructed and designed to give a lifetime of reliable service. It can be quickly adjusted to any height between 39 and 54 inches from floor level. Fitted with a 12 x 20 inch felt covered swivel table while the rubber-tipped tubular steel legs and sturdy metal struts provide a firm support for all amateur movie projectors. Finished in smart grey with chrome fittings.

PRICE: £14.0.0

M. and S. Reels and Cans

A very handy range of 16mm. reels and cans. Sturdily made from finest quality light metal, they are renowned for their long life and reliability. In 800 ft., 1,600 ft. and 2,000 ft. sizes they are particularly suitable for the screening and storage of lengthy programmes.

Prices: Cans and Reels — 800 ft., £1.9.0; 1,600 ft., £2.5.0; 2,000 ft., £2.14.2. Reels only — 800 ft., 14.6; 1,600 ft., £1.2.6; 2,000 ft., £1.7.6.

Gilkon 8mm. and 16mm. Combined Rewinder

Sturdily and attractively constructed. Accommodates both 8mm. and 16 mm. reels (up to 2,000 ft). Ensures smooth rapid rewinding of your home movies. Mounted on a handsomely polished baseboard, the Gilkon is double geared for convenience.

Price: £10.12.0.

Kodak Film Cement

A new improved formula. Gives permanent and trouble-free splices. Dries in a few seconds. In four sizes.

Prices: 20 oz., 11.3; 4 oz., 4.6; 1 oz., 2.3; ½ oz., 1.6.

Kodak Cine Fade Solution

Is a balanced solution of dyes for making one's own "fade-outs" in home movies. Simple to use for both black-and-white or Kodachrome films. In 8 oz. bottles.

Price: 9.0.

Kodak Lens Cleaner

Keeps lens clean, prevents the growth of fungus. In two sizes.

Prices: 4 oz. 3.6; 1 oz. 2.0.

Austral Lens Cleaning Tissue

Ideal for cleaning projection lenses. Finest quality white velvety soft tissue that will not damage the surface. In books of ten sheets.

Price: 6d.

Kodascope Oil

A highly refined oil especially made for use in projectors. Provides proper and lasting lubrication. In 1 oz. and 4 oz. bottles.

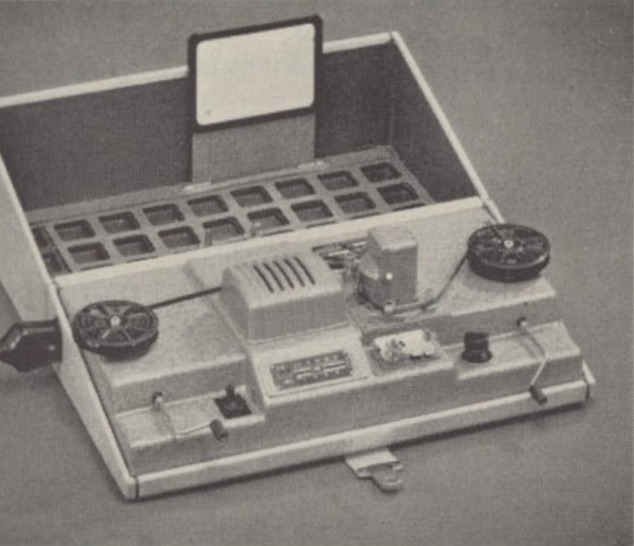
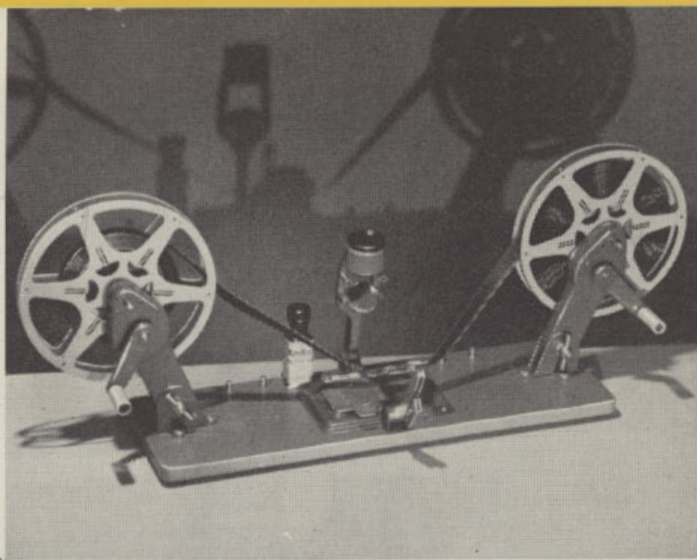
Prices: 4 oz. 3.9; 1 oz. 2.3.

EDITING EQUIPMENT

Marguet Film Editor

A handsome, precise editing unit for use with either 8mm. or 16 mm. film. It is fitted with double-geared rewind controls, automatic universal film splicer and an adjustable optical film viewer. The complete editor folds down to compact proportions for neat storage and ready portability. Capacity is 400 ft. (8mm.), 800 ft. (16mm.). Apart from its wooden base-board it is of sturdy metal construction with an attractive grey metallic finish.

PRICE: £28.7.0



Meopta 8 mm. Film Editor

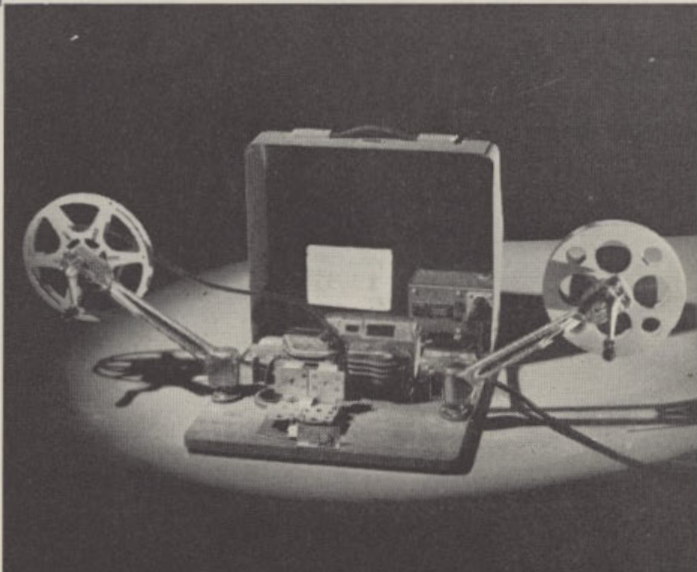
Conveniently portable, this outfit is sturdy, compact and easy to use. With film threaded and light (5-watt) switched on, a few turns of the geared rewind will show action clearly and brightly on the animated viewing screen; a special device notches actual frame projected (for splicing indication); sequences can be filed in compartments ready for splicing; built in indicator automatically measures total film lengths in metres and screening time in minutes (16 frames per second). Complete with a reliable built-in splicer, the whole unit folds up into a handy carrying case.

PRICE: £41.15.0

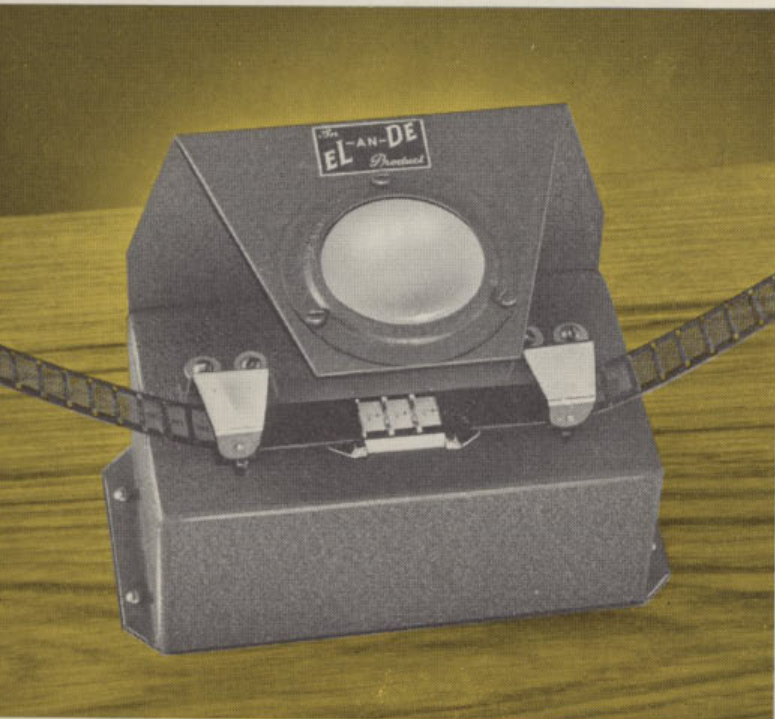
Meopta 16 mm. Film Editor

Designed for first class editing, splicing and rewinding of 16mm. movie films. Incorporates baseboard, modern precision splicer, geared rewinders, animated viewer giving a brilliant projected motion picture image, and automatic scales giving film measurements and projection times. The rewinders, which fold flat when not in use are fitted with brakes, cranks and gears; ratio of rear spindle can be set to operate at either 1:1 or 3:1. The viewer houses a 12-volt 35-watt globe powered by a built-in 240 volt transformer.

PRICE: £55.15.1



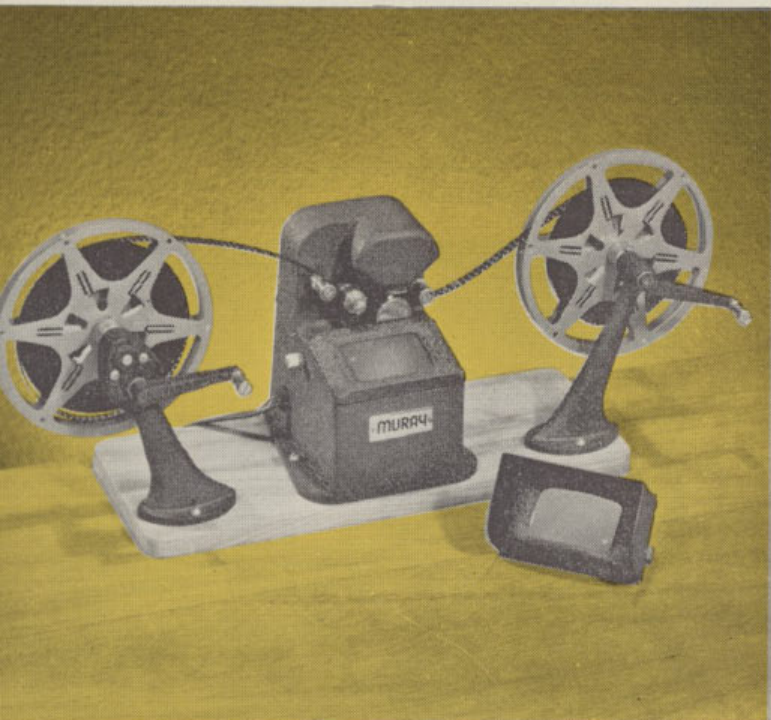
HOME MOVIE VIEWERS



EL-AN-DE Movie Viewer

A simple and inexpensive cine viewer. An important part of your home editing outfit, it can be mounted between your re-winders and next to your splicer. Of all metal construction and finished in smart grey wrinkle-tone enamel it will accommodate 8mm., 9.5mm. or 16mm. movie films. Other features are: Large viewing glass, built in lamp, plugs into 240V mains, long life stainless steel film rollers.

PRICE: £6.6.9.

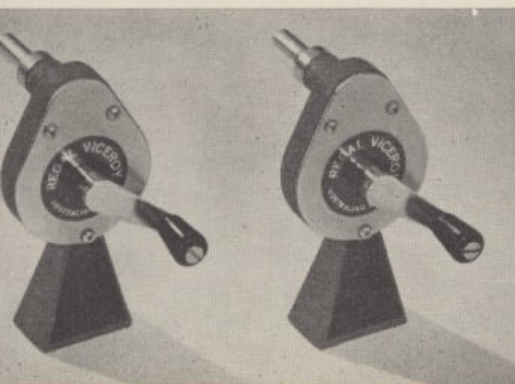


MURAY Animated Viewer With Rewinder

Features a plano-convex prism of high magnification that assures an easy-to-see picture of great brilliance. A collapsible hood is supplied for viewing in a normally lit room. Film tracks are of stainless steel. Has focusing movement and frame marking device. The complete unit is mounted on a sturdy wooden base. The rewind arms are designed to accept 400 ft. reels; the left arm is geared whilst the right is direct drive. Plugs into 240 volt A.C. current.

PRICE: £34/2/6.

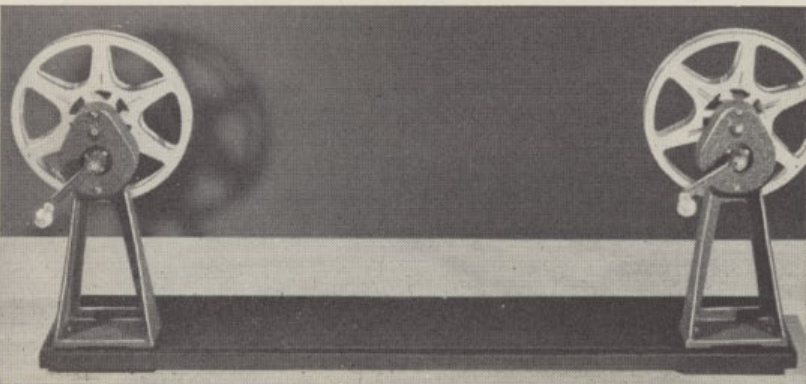
REWINDERS & SPLICERS



REGAL REWINDERS

Ideal for the beginning of your home editing outfit. Can be mounted on a baseboard allowing a space for a splicer and a viewer in between. Geared 3:1 they are of sound metal construction.

PRICE: £5/14/6.



AUSTRAL REWINDER

Designed for the 16mm. movie enthusiast who requires a heavy duty rewriter of great stability; double gearing ensures smooth and rapid rewinding of small and large reels. Accepting reels up to and including 2,000 ft. it is mounted on a polished hardwood baseboard.

PRICE: £13/9/-.

Marguet Universal Splicer

Sure and permanent splices of either 8mm., 9.5mm. or 16mm. movie film are assured when this new and efficient splicer does the job. Exact alignment and secure clean joins are its outstanding features. It is speedy in operation — first class splices can be made in about half a minute. Of sturdy all-metal precision construction.

PRICE: £5.

Marguet Automatic Universal Splicer

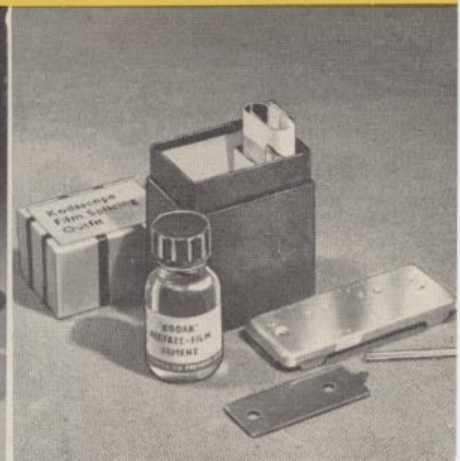
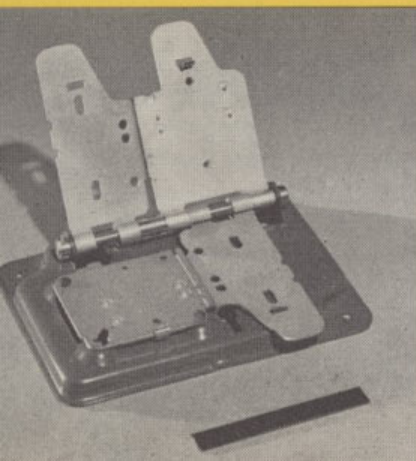
For use with 8mm., 9.5mm., or 16mm. film. Permits the making of first class splices in the minimum of time — thanks to its steel cutting plates and its efficient serrated-edged dry scraper. No pre-moistening is necessary. A groove across the lower left hand corner prevents any surplus film cement from spreading along the back of the film.

PRICE: £6/8/3.

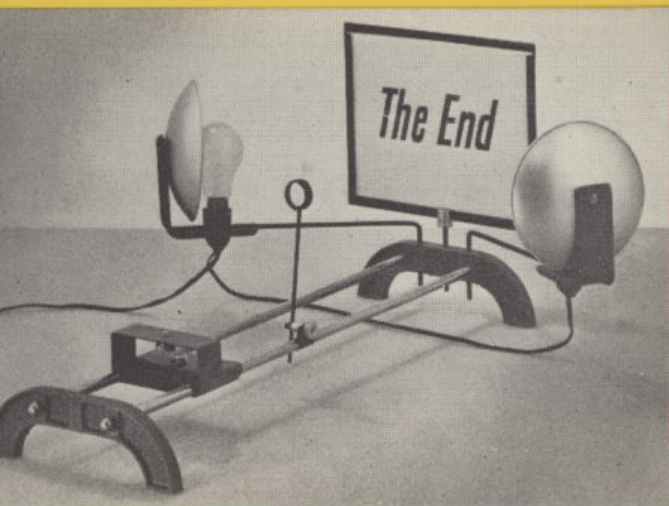
Kodascope Splicing Outfit

This simple, inexpensive, easy-to-use splicing outfit makes a handy tool for emergency splicing. For use with both 8mm. and 16mm. movie film it is a "must" as an accessory for every movie projector. Consists of splicing block, handy scraper, a bottle of Kodak Film Cement, full instructions for use, and sample pieces of film for practise.

PRICE: 8/6.



TITLING OUTFITS



AUSTRAL CINE TITLER AND COPIER

Movie titling is made easy with this compact, efficient home titling outfit. Outfit comprises: Base and camera support, camera platform, two large reflectors, frame support, platform extension block and a high quality supplementary close-up lens. Completely wired ready for use — plugs into 240 volt A.C. mains.

PRICE: £13.8.3

MURAY TITLING OUTFIT

A versatile and compact titling outfit. Will accept practically any 8mm. movie camera that is fitted with screw-in type interchangeable lens. Some of the effects that can be obtained are: Still titles against a moving background; titles being turned over on the pages of a book; pivoting titles; very large close-ups; fades giving the effect of the title moving away or returning. Outfit is complete with twin lamps, camera stand, title winder, several metal screens, and a sturdy metal base.

PRICE: £23.12.6

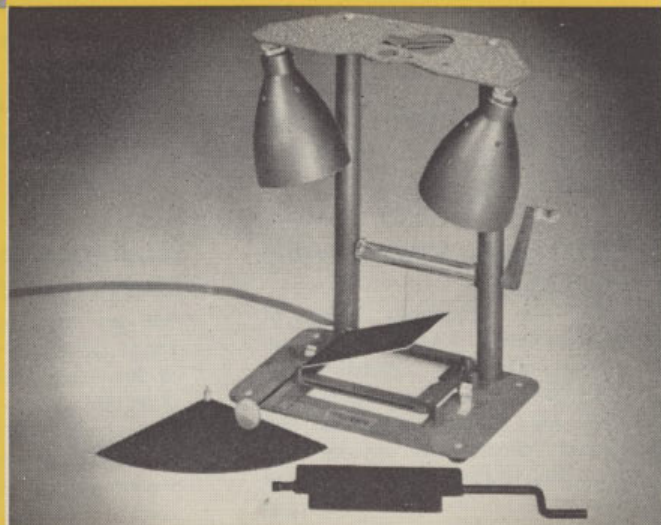
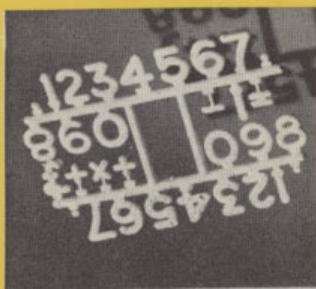
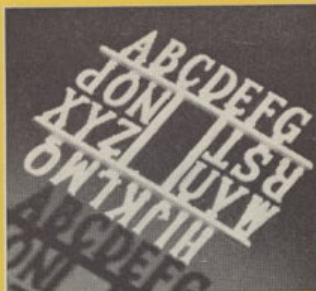
AUSTRAL TITLING SETS

Give your movies that "professional look" by making your own attractive titles. In washable plastic each set contains five complete alphabets (with capital and lower-case letters in four colours), two sets of figures (1 to 10), and miscellaneous symbols.

PRICES:

Coloured £1.2.0;

White 14/6.



CARRINGTON FILM TITLING OUTFIT

(not illustrated)

Inexpensive and simple to use, this titling outfit provides the means to give that "finishing touch" to your movies. Complete with a transparent plastic sheet for superimposing titles over backgrounds and an opaque sheet for special lighting effects, etc., the set comprises ninety-two assorted coloured plastic letters (eight colours), ten numerals, a £ sign, and a map of Australia.

PRICE: £2.11.6

8mm & 16mm SUBJECT FILMS

8mm. Subject Films

Here's an opportunity to introduce famous names into your next home movie screening — names like Mickey Mouse, Pluto and Charlie Chaplin. They add that necessary touch of variety to make your show "go with a bang". There's a range of travel movies too. Check this list of famous productions.

WALT DISNEY CARTOONS

(50 ft. Black-and-White)

Barnyard Broadcast	Mickey's Orphans
Beach Party	Mickey's Pal Pluto
Birds of a Feather	Mickey's Service Station
Building a Building	Mickey's Steamroller
China Plate	Mother Goose
Grocery Boy	Pet Store
Gulliver Mickey	Playful Pluto
Mail Pilot	Puppy Love
Mickey Cuts Up	Trader Mickey
Mickey's Good Deed	Wayward Canary
Mickey in Giantland	Ye Olden Days
Mickey's Nightmare	

PRICE: £1.18.0

WALTON FILM PRODUCTIONS

(50 ft. Black-and-White)

Aladdin and His Lamp	Pies and Hosepipes
Ant and the Elephant	Racing Daredevils
Charlie at the Studio	Rome, the Eternal City
Charlie at the Races	Round the Cinder Track
Charlie at the Theatre	School for Taxis
Circus Thrills	Sights of London
Circus Time	Sights of Paris
Civil Aircraft Old and New	Ski Thrills
Edinburgh	Smash and Grab
Elizabeth Our Queen	Speed Crazy

PRICE: £1.11.6.

Kodachrome Cinegraphs

100 ft. 16mm. silent films of scenic attractions and popular subjects sure to please everybody — plus, of course, the fascinating appeal of movies brilliant in colour and rich in detail. Each film is attractively cartoned and spooled on a 100 ft. metal reel.

New Kodachrome Cinegraphs are added to our range from time to time — so watch out for news of new releases. Those now in production are: "Sydney Beaches" Part 2; "The Blue Mountains"; "Melbourne"; "Brisbane".

Show Time, Sydney
Spring Comes to Melbourne
Surfing Near Sydney
Sydneyiders
Sydney Beaches
Sydney Harbour Bridge
Sydney Harbour Panorama
Sydney — Part 1
Taronga Park Zoo — Nos. 1, 2 and 3
The Barrier Reef — Part 1
The Barrier Reef — Part 2
The Barrier Reef — Part 3
The Barrier Reef — Part 4
Whitsunday Island
PRICE: £10.3.6.

PEAK FILM PRODUCTIONS

Between Shows (Charles, Chaplin) (306 ft.)
Ham Artist (Charles Chaplin) (271 ft.)
In the Bank (Charles Chaplin) (378 ft.)
Laughing Gas (Charles Chaplin) (292 ft.)
Oh! What a Night (Charles Chaplin) (305 ft.)
PRICE: £3.10.0

BRITANNIA FILM PRODUCTIONS

"Romantic England" Series (400 ft.)
PRICE: £16.0.0

Ask at your Kodak store for the complete list of 8mm. and 16mm. Films.

KODASCOPE FILM LIBRARY

- * Comedies and Cartoons
- * Topical and Variety
- * Travel and Educational
- * Full-length Feature Films
- * Musicals and Famous Artists

A wealth of variety and general interest, full entertainment, educational and scientific films may be rented as required by subscribers to the Kodascope Film Library. The Kodascope Film Library is specially maintained to supply 16mm. silent, 16mm. sound and 8mm. films to you when you purchase your movie projector. New releases are regularly added to the wide range of titles.

KODAK SERVICES FOR THE PHOTOGRAPHER

Kodak Photo-Finishing Service

This is a world wide facility extended to the users of Kodak film. This service embraces the processing of amateur films, the making of super-size prints, contact prints, and enlargements and the making of negatives and black and white prints from colour transparencies.

Kodak Colour Processing

Users of Kodachrome (still or movie) or Ektachrome colour films, are assured the facility of uniform processing at Kodak Colour Processing Laboratories throughout the world. Also duplicate transparencies can be made from selected colour slides.

Kodak Technical Service

A complete photographic service is available through every Kodak Store in the Commonwealth. This service acts essentially in an advisory capacity to help both amateur and professional photographers.

Kodak Camera Repair Service

Available through all Kodak Stores this service includes the maintenance, repair or reconditioning of still and cine cameras and projectors, exposure meters, etc., marketed by the Kodak company. Free quotations available on request.

Kodak Colour Print Service

Kodak Colour Prints can be enlarged from suitable 135 and 828 Kodak Colour transparencies — each print retains the crisp detail and full-colour beauty of the original. Advice on transparency selection is available at any Kodak Store.

Kodak Data Books and Leaflets

Those requiring further information upon the technical side of subjects photographic are referred to the wide range of Kodak Data Books and free leaflets which refer in great detail to many aspects only briefly covered in this book.

KODAK STORE ADDRESSES THROUGHOUT AUSTRALIA

ADELAIDE.....37 Rundle Street
BALLARAT.....406 Sturt Street
BRISBANE.....250 Queen Street
CAIRNS.....103 Abbott Street
GEELONG.....89 Ryrie Street
HOBART.....45 Elizabeth Street
KATOOMBA.....Katoomba Street
LAUNCESTON.....93 Brisbane Street

MELBOURNE.....252 Collins Street
NEWCASTLE.....9 Wolfe Street
PERTH.....662 Hay Street
ROCKHAMPTON.....105 East Street
SYDNEY.....379-381 George Street
TOOWOOMBA.....424 Ruthven Street
TOWNSVILLE.....166 Flinders Street

KODAK DEALERS EVERYWHERE

STILL Cameras MOVIE

EVERYTHING  PHOTOGRAPHIC
19 ROYAL ARCADE, SYDNEY, N.S.W. 2000



Naturally,
taken on
Kodachrome
colour film

STILL Camera and
EVERYTHING PHOTOGRAPHY

Kodak

