



KODAK CATALOGUE ...1961-2

Kodak Sensitized Materials

... are always fresh and dependable because they're made in Australia especially to suit all Australian conditions.



Verichrome Pan Film

A fast panchromatic film that enables you to take better-than-ever pictures, whether in bright sunshine, on cloudy days or indoors, and at night by flash. ("Pan" means panchromatic — faster and more sensitive to colour and tone values in black-and-white pictures.) It is especially suitable for box-type Brownies and the simpler folding-type cameras. Of popular above-average speed (ASA speed number is 125 for both daylight and tungsten), Verichrome Pan possesses a remarkable latitude which helps to soften harsh shadows caused by glaring sunlight, to yield brighter, clearer snaps made on cloudy days, and to show crisper detail and image quality in flash pictures. Available in all standard roll-film sizes except 35mm. Exposure: Average subject in sunlight: f/11, 1/100 second.

Tri-X Pan Film

Combines exceptional speed with complete colour sensitivity — thus making it the obvious choice of advanced enthusiasts seeking "the best." Its ASA speed number is 400 for both daylight and tungsten. This means that the film can readily be used, without supplementary flash or flood illumination, for indoor snapshots by available light, night sporting events, without flash, and fast-action pictures on very dull days outdoors. The exposure and development latitude of Tri-X is exceptional — considerable over- or under-exposure can be tolerated and excellent prints still obtained. Tri-X is available in 135, 127, 620, 120 and 828 roll film sizes and 520, 518, 523 and 541 in film pack. Exposure: Average subject in sunlight: f/16, 1/200 second.

Panatomic-X Film

Panatomic-X is a microscopically fine-grain film possessing extremely high "resolving power", superior acutance (less "light scatter" between the silver crystals), and an ultra-thin emulsion. In addition, it has an ideally balanced panchromatic sensitivity which means a better exposure latitude, a wider tonal range with no blocked highlights or blank shadows, and an improved operating speed. It has an ASA speed number of 40 for both daylight and tungsten. The ultra-thin emulsion drastically cuts development and drying times — negatives can be printed or enlarged about half an hour from commencement of developing process. Available in 35mm. size in 36-exposure cassettes. Exposure: Average subjects in sunlight: f/11, 1/50 second.

Kodachrome Film

Available in sizes K135 and K828, Kodachrome yields colour transparencies which may be viewed directly or projected in large size on the home screen. It requires no extra equipment for taking. Regular Kodachrome is for pictures outdoors in sunlit hours, and Type "A" is for use with ordinary photoflood and flash lamps. The price includes processing and mounting the 24 by 36mm. transparencies as standard Kodaslide ready to fit any 2 by 2in. projector for home projection. A special service is available whereby duplicate Kodachrome transparencies can be made, if and when required. The Kodak Colour Print Service has made it possible for users to obtain handy album-size enlargements in full colour from suitable Kodachrome transparencies. Average exposure in sunlight: f/5.6, 1/50.

Ektachrome Film

A fast reversal type colour film balanced for exposure in sunlight. Ektachrome may also be used at night with blue flashbulbs or with corrective filters. Available in two speeds, Ektachrome E135 ASA 32 and High Speed Ektachrome EH135 ASA 160.

Ektachrome may be processed at home with an Ektachrome processing kit or may be processed by Kodak — in the case of the latter, films are returned as mounted 2 x 2 inch transparencies. Ektachrome prices (see page 2) **do not include** processing. Exposure: Average subjects in sunlight: f/11, 1/50.

Kodacolor Film

A fast, negative-type colour film for exposure in daylight or at night with clear flashbulbs. When fill-in flash is needed in daylight, blue flashbulbs should be used.

Kodacolor Film is available in 20-exposure magazines to fit 35mm. cameras and in roll film form to fit 127, 120 and 620 size cameras. It has an ASA exposure index of 32 daylight and 20 tungsten. The exposed film is processed into Kodacolor negatives from which Kodacolor Prints are then made.

Prints are 3½" x 3½" or 3½" x 5", depending on whether the negative is square or oblong. Processing and print costs are not included in the film price. Kodacolor enlargements are also available in 5 x 5 inch and 5 x 7 inch sizes. Average exposure in sunlight: f/11, 1/50 second.

PRICES OF KODAK ROLL FILM

VP VERICHROME PAN — 127, 3/9d.; 620 and 120, 4.0d.; 616 and 116, 5.0d.; 122, 6.3d.

FX PANATOMIC X — 135mm. 36 exposure, 11.8d.

TX TRI-X PAN — 127, 4.4d.; 620 and 120, 4.7d.
135mm. 36 exposure, 11.8d.; 828, 4.7d.

K KODACHROME — 135mm. 20 exposure, 40.0d.
135mm. 36 exposure, 60.0d.; 828, 23.0d.
(prices include processing)

C KODACOLOR — 127, 120 and 620, 18.0d.
135 20 exposure, 23.0d.

E EKTACHROME — 135mm. 20 exposure, 24.0d.
135mm. 36 exposure, 35.0d.; 127, 120, 620, 18.0d.

EH HIGH SPEED EKTACHROME — 135mm. 20 exposure, 31.0d.

SPEED NUMBERS FOR KODAK FILM For Daylight

	ASA
Verichrome Pan	125/5°
Tri-X Pan	400/7°
Panatomic-X	40/3.5°
Kodachrome	10
Kodachrome Type A	10
Ektachrome	32
High Speed Ektachrome	160
Kodacolor	32
When using Kodachrome Type A in daylight a Kodak Wratten Filter No. 85 must be used.	

For Artificial Light

	ASA
Verichrome Pan	125/5°
Tri-X Pan	400/7°
Panatomic-X	40/3.5°
Kodachrome	5
Kodachrome Type A	16
Kodacolor	20

Kodachrome Daylight Film should be used in emergency only. In this case a Kodak Wratten 80B Filter must be used.

Bromide Paper

The Kodak Bromide Paper range gives the photographer a wide choice of paper surfaces and base tints enabling him to choose the combination and physical appearance which best suits his subject material. These characteristics, together with the wide contrast range, mean that he can select a paper precisely suited to the negative contrast with which he works. Uniformity of image tone throughout all grades of contrast is a fact attractive to the photographer who finds himself using various Bromide papers to cover the variety of his work. Uniformity of handling and maximum versatility in processing and general handling make Kodak Bromide Papers the natural choice for the bulk of photographic printing. Available in a wide range of surfaces and contrasts in single and double weight, and in sizes from 2½ to 3½ to 16 x 20in.

Bromesko Paper

Kodak Bromesko Paper has been designed as a specialist paper for truly distinctive pictorial, exhibition, or studio work. It gives fine quality prints with a characteristic charm—a charm produced by full rich gradation in sparkling highlights and translucent shadows. It is not an ordinary bromide emulsion; it has been devised to possess its special qualities and only personal experience can inspire due appreciation of these. Some of its best characteristics are: its exceptionally long scale of gradation which enables it to render perfectly all the delicate tonal modelling of a good portrait negative; its rich deep-blacks and clear highlights; and its great development latitude with attendant gain in print uniformity and reduction in the number of reject prints. Produced in two degrees of contrast and in an extensive range of textures and surfaces. Available, double weight only, in a wide range of sizes.

Velox Paper

Velox is the ideal contact printing paper for printing your own snapshots at home. Four degrees of contrast make it ideal as a medium for making prints from a variety of negatives of different degrees of contrast. The tone of Velox is blue-black which is uniform through all degrees of contrast, and equally uniform for a range of development times. Available in glossy in a wide range of contrasts to suit all negatives. Marketed in 25 and 100-sheet packets in sizes from 1¼ x 2¼ to 3½ x 5½ in.; and 10 and 100-sheet packets in 4½ x 6½ in. and 6½ x 8½ in.

PRICES OF KODAK PAPERS

Size	Velox & Bromide Single Weight		Bromide & Bromesko Double Weight	
	10 sheets	25 sheets	10 sheets	25 sheets
1¼" x 2¼"	—	2.6	—	—
2¼" x 2¼"	—	2.11	—	—
2¼" x 3½"	—	3.9	—	4.2
2¼" x 4½"	—	5.0	—	5.10
3¼" x 4½"	—	5.10	—	6.8
3½" x 5½"	—	7.11	—	8.9
4½" x 6½"	5.0	—	5.10	—
6½" x 8½"	8.9	—	10.5	—
8" x 10"	12.11	—	15.0	—
10" x 12"	19.2	—	22.1	—
12" x 15"	28.4	—	32.11	—
16" x 20"	50.5	—	58.4	—

BLACK & WHITE PHOTO-FINISHING

DEVELOPING

All size roll films and 828 size 2/6 each

All 35mm. films (20 or 36-exposures) . . . 3/6 each

PRINTING

Kodak Film No.	No. of Exposures	Size of Negatives	Kodak Super-Size Prints Size	Price
135	20 or 36	24 x 36mm.	3 1/2 x 5 in.	7d. each
828	8	28 x 40mm.	3 1/2 x 5 in.	7d. each
127	12	1 1/2 x 1 1/2 in.	3 1/2 x 3 1/2 in.	7d. each
127	8	1 3/8 x 2 1/2 in.	3 1/2 x 5 in.	7d. each
127	16	1 1/8 x 1 1/2 in.	3 1/2 x 4 1/2 in.	7d. each
620 or 120	16	1 3/4 x 2 1/4 in.	3 1/2 x 4 1/2 in.	7d. each
620 or 120	12	2 1/4 x 2 1/4 in.	3 1/2 x 3 1/2 in.	7d. each
620 or 120	8	2 1/4 x 3 1/4 in.	3 1/2 x 5 in.	7d. each
616 or 116	8	2 3/4 x 4 1/2 in.	2 3/4 x 4 1/2 in.	7d. each
118	6	3 1/4 x 4 1/4 in.	3 1/4 x 4 1/4 in.	7d. each
122	6	3 1/4 x 5 1/2 in.	3 1/4 x 5 1/2 in.	7d. each

ENLARGING

SIZE	PRICE
4 1/4 x 6 1/2 in.	4/6
4 1/2 x 4 1/2 in.	4/6
6 1/2 x 8 1/2 in.	5/3
6 1/2 x 6 1/2 in.	5/3
8 x 10 in.	7/-
8 x 8 in.	7/-
10 x 12 in.	8/3
10 x 10 in.	8/3

COLOUR PHOTO-FINISHING

Kodacolor Film

Developing (all sizes, including C116, C616 and C828), per roll 8 6

Kodacolor Prints:

(from any colour negative) sizes:
3 1/2 x 3 1/2 in. or 3 1/2 x 5 in., each 4 6

Kodacolor Enlargements:

(from any colour negative) sizes:
5 x 5 in. or 5 x 7 in., each 15 6

Concession prices for bulk quantities of:

Kodacolor Prints (ordered at the SAME time from ONE negative).	50-249, each ..	4 0
	250 or more, each	3 9
Kodacolor Enlargements (ordered at the SAME time from ONE negative).	3-9, each	13 6
	10 or more, each	11 6

Black-and-white Super-Size Prints, from any colour negative, each 7

Kodak Ektachrome Film

Kodak High Speed Ektachrome Film

Developing by Kodak (for BOTH the above types of film):—NOT included in film price.

Kodak Ektachrome Prepaid Processing Mailers:

PE ROLL, for all Ektachrome Roll Films, each 14 0

PE 20, for all 35mm. 20-exposure Ektachrome Films, each 18 0

PE 36, for all 35mm. 36-exposure Ektachrome Films, each 1 8 0

(Mailers cover processing into full colour cardboard-mounted transparencies, and posting to owner.)

Developing by the User (both types of film):
Kodak Ektachrome Processing Kit E2, improved, 1/2 gal. 2 8 9

Kodak Colour Prints: As for Kodachrome film.

Kodachrome Film

Developing: Film price includes processing into full colour cardboard-mounted transparencies, and posting to owner.

Kodak Colour Prints (from any 135 or 828 size positive colour transparency):

3 1/2 x 3 1/2 in. and 3 1/2 x 5 in., each 8 6
5 x 5 in. and 5 x 7 1/4 in., each 18 6

Concession prices for bulk quantities of Kodak Colour Prints, ordered at the SAME time from ONE transparency . . .

3 1/2 x 3 1/2 in., or 3 1/2 x 5 in.	50-249, each ..	7 3
	250 or more, each	6 0
5 x 5 in. or 5 x 7 1/4 in., 50 or more, each		15 0

Mounts for 3 1/2 x 3 1/2 in. or 3 1/2 x 5 in. prints, each 1 0

Duplicate Transparencies: Size 24 x 36mm. from Kodachrome, Ektachrome or any similar transparency, each 3 6

Concession prices for bulk quantities if ordered at the SAME time from the SAME original transparency

4-49, each	3 0
50-99, each	2 6

From one OR MORE originals, ordered at the SAME time, 100 or more, each 2 2

Black-and-White Negatives: Size 2 1/4 x 3 1/4 in. from any positive colour transparency, each 2 3

N.B. When ordering Kodak Colour Prints, Kodacolor Prints or Kodacolor Enlargements only the full transparency area, less a narrow masking margin all round can be printed.

KODAK SUPER-SIZE PRINTS

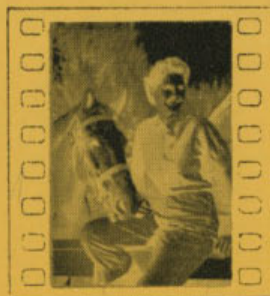
Everybody likes good value, and surely this is it — big sparkling, twice-size snapshots, made by Kodak on modern automatic equipment. For example, if your camera takes eight pictures on a 620 film you now get eight big prints $3\frac{1}{2} \times 5$ inches in size. Why not have big, glossy Kodak Super-Size Prints made from your old negatives too? They're ideal for gifts and framing. Check the chart below for your film size.

PRICE: 7d. each.



Kodak Super-Size Print $3\frac{1}{2} \times 5$ ins.

from these three negative sizes



Film No.:

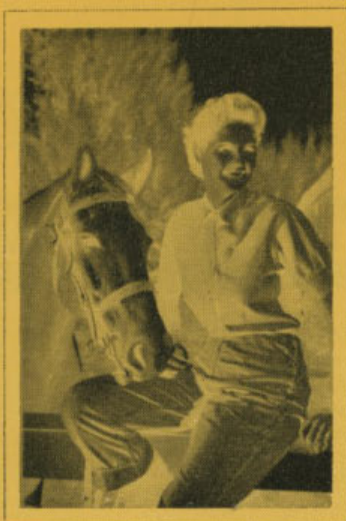
135

Exposures:

36

Neg. Size:

24×36 mm.



Film No.:

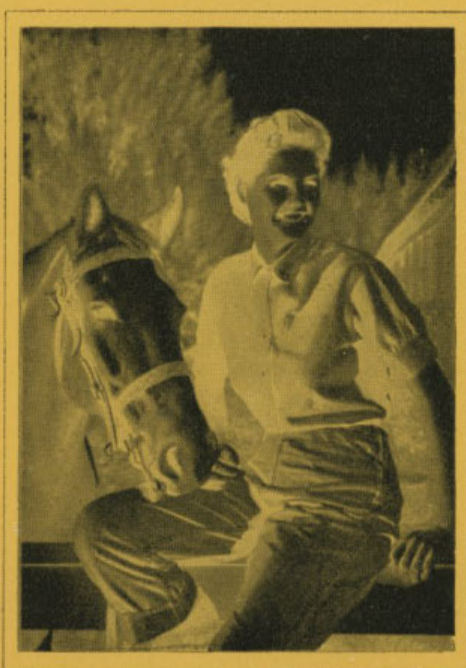
127

Exposures:

8

Neg. Size:

$1\frac{5}{8} \times 2\frac{1}{2}$ "



Film No.:

120 or 620

Exposures:

8

Neg. Size:

$2\frac{1}{4} \times 3\frac{1}{4}$ "

Film No.:
127

Exposures:
16

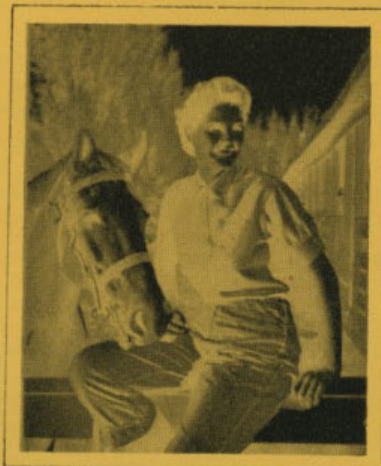
Neg. Size:
 $1\frac{1}{8}" \times 1\frac{1}{4}"$



Film No.:
120 or 620

Exposures:
16

Neg. Size:
 $1\frac{3}{4}" \times 2\frac{1}{4}"$



from these two
negative sizes

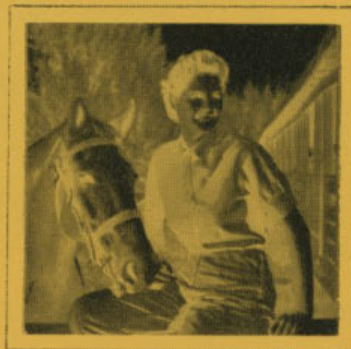
Kodak Super-Size Print $3\frac{1}{2} \times 4\frac{1}{2}$ ins.



Film No.:
127

Exposures:
12

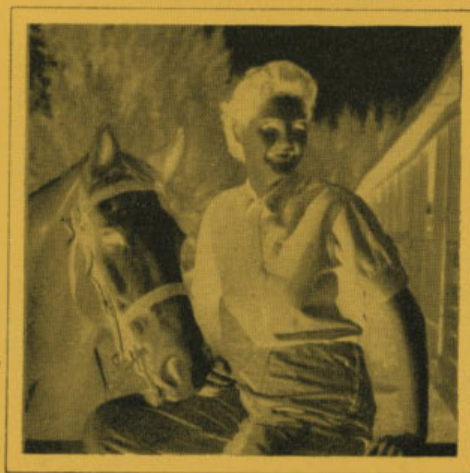
Neg. Size:
 $1\frac{5}{8}" \times 1\frac{5}{8}"$



Film No.:
120 or 620

Exposures:
12

Neg. Size:
 $1\frac{1}{4}" \times 2\frac{1}{4}"$



from these two negative sizes

**Kodak Super-Size Print
 $3\frac{1}{2} \times 3\frac{1}{2}$ ins.**

World-Famous Brownie Cameras . . .



BROWNIE FLASH II

The whole family can use this exciting box camera, it's so simple and easy to operate. You can take flashsnaps, too, anywhere, day or night, by simply attaching the Brownie Flashholder. The high quality Kodet lens ensures a bright, sharp picture every time you press the button — and there is a built-in portrait lens for close-ups at five feet. The dependable Kodak rotary shutter has instantaneous and brief-time settings and is coupled to a modern push button release designed to minimise the possibility of camera movement. The Flash II is finished in smart black leatherette and has two large viewfinders for horizontal and vertical pictures. It loads with Kodak 620 film for eight pictures.

PRICE: £3.3.9

BROWNIE 127 MODEL II

A smartly designed up-to-the-minute snapshot camera that is simple and dependable in use. It has an all-moulded body in glossy black plastic, smart etched-metal nameplate, large built-in optical eye-level viewfinder, dependable fixed focus Kodet lens, modern push-button shutter release, and strong neck cord. Loads with Kodak 127 film for eight pictures.

PRICE: £1.15.9



BROWNIE STARFLASH

Just right for picture taking anytime, anywhere. Enclosed optical eye-level finder shows picture subjects big and clear. Its flash reflector and battery case are built in — an integral part of the Brownie Starflash Camera. Uses low cost capless flashbulbs; requires only 2 Eveready 915AA Batteries. Handy exposure guide on back of camera shows correct subject distances for flash using Kodak Films.

Other outstanding features include: Double exposure prevention device; can be used with or without flash; easiest film loading ever; available in smart black plastic. Loads with Kodak 127 film for twelve pictures.

PRICE: £4.17.6



BROWNIE STARLET



The ideal camera for the beginner, the Brownie Starlet Camera takes all three — colour slides, black-and-white or colour snapshots, giving twelve pictures per roll of 127 size film.

It is so simple to operate — adjust the setting for the type of film being used, sight through the extra large optical eye-level viewfinder and press the button. The fast Dakon lens gives sharp, clear pictures you will be proud to display. The camera shutter is synchronised for use with the Brownie Flashholder (price 27/6d.), which fits neatly on to the side of the camera. The shutter is set as the film is advanced — consequently, there are no double exposures. Complete with neck strap.

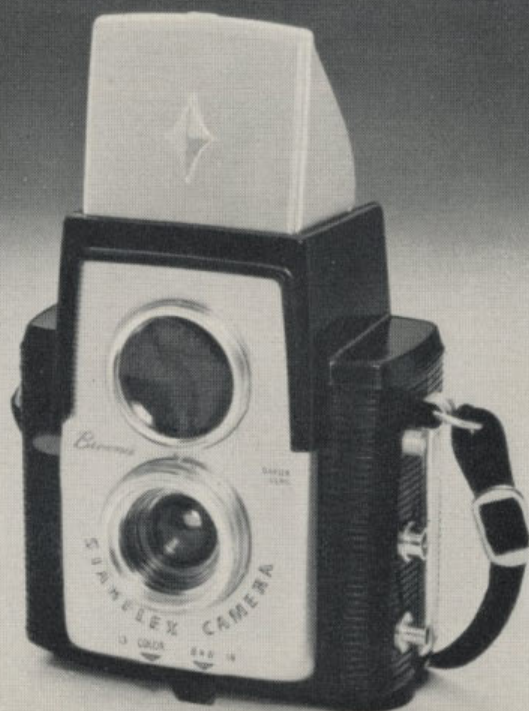
PRICE: £2.17.6

BROWNIE STARFLEX

Latest addition to the world famous Brownie family, the Brownie Starflex has hooded viewfinder that shows your picture big before you snap it. Takes three kinds of pictures — colour snaps, black-and-white snaps, and colour transparencies. Rugged and shock resistant, its features are: pre-focused lens, double exposure prevention, flash synchronisation, and carrying strap.

It's so light and compact that it fits easily into pocket or purse and it takes 12 pictures on a roll of 127 film.

PRICE: £5.7.6.



BROWNIE STARMETER

You'll be delighted with the clarity and excellence of every picture you take with the Brownie Starmeter. It features a built-in exposure meter which accurately measures the light to make sure you get a perfectly exposed needle-sharp picture every time. Other features are: a colour-corrected Kodak 3-element f/8 lens, double exposure prevention, optical eye level viewfinder and flash synchronisation. Loads with 127 film to give you 12 colour superslides, black-and-white prints, or colour snapshots per roll.

PRICE: £10.7.6.



BROWNIE CAMERA OUTFITS

STARLET OUTFIT

The ideal outfit for the beginner. Contains everything needed for day or night photography — new Brownie Starlet Camera, Brownie Flashholder, two type 915 batteries, five flashbulbs and a black-and-white film.

Load the camera with the film supplied, attach the Flashholder, insert the batteries and a flashbulb and you are ready for picture making around-the-clock.

When you press the shutter release button the flash fires automatically at the right instant and provides all the light you want, where you want it, to ensure crisp bright pictures. The Brownie Starlet Camera also takes colour snapshots or colour slides by day-light or flash.

PRICE: £5.0.0.

FLASH II OUTFIT

A complete ready-to-use hobby outfit for pictures in black-and-white super size, by flash or daylight. Superbly set up in a modern presentation pack, it's an ideal gift for any occasion. The outfit comprises world famous Brownie Flash II Camera featuring high quality Kodak lens, built-in portrait lens for close-ups, reliable push button shutter release and sturdy metal construction; Brownie Flashholder; two batteries (type 915); five capless flashbulbs; two Kodak black-and-white 620 films; complete instructions for use.

PRICE: £5.10.0.

STARFLASH OUTFIT

A modern beautifully-presented outfit with everything needed for day and night snapshooting. It contains a Brownie Starflash Camera (for colour slides or black-and-white or colour snapshots), five flashbulbs, two batteries (type 915), and two rolls of black-and-white Kodak film.

Simple to use, all you have to do is load the camera with one of the films supplied in the outfit, insert two batteries, set the exposure lever to "B & W," insert a flashbulb and you're ready to go, ready to take fascinating flash pictures anytime, anywhere.

PRICE: £5.17.6.

Rolleiflex famous-name reflex cameras

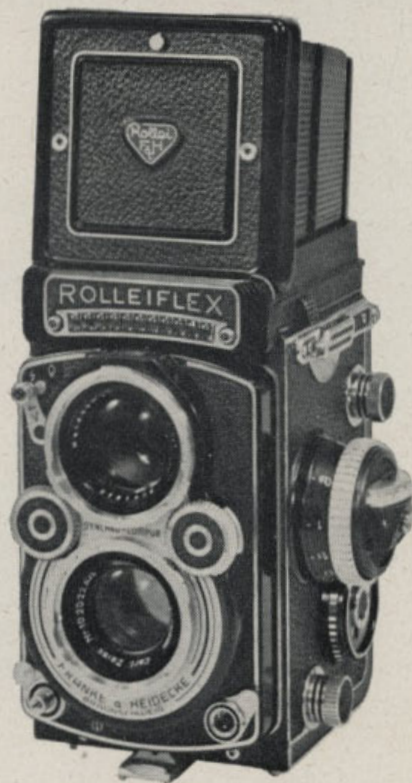
Rolleiflex and Rolleicord cameras — prized by millions of enthusiastic owners the world over for their outstanding quality and precision craftsmanship.

Rolleiflex:

Many models are fitted with a built-in photo-electric exposure meter for use with both reflected and incident light; Synchro-Compur shutter flash-synchronised for all types of flash and with speeds from 1 to 1/500 sec. and "B"; dual back for 12 pictures (2½ by 2½ in.) or 36 pictures (24 by 36mm.) using a Rolleikin accessory. Other outstanding features are: folding focusing hood for reflex or direct viewing; magnifying lens; automatic parallax compensation; accurate positive focusing; automatic depth-of-field indicator; automatic film winding, counting, and shutter setting; double-exposure prevention; click-stop shutter indicator; light values scale; self-timer; lens cap; cable release and carrying case.

Rolleicord Va:

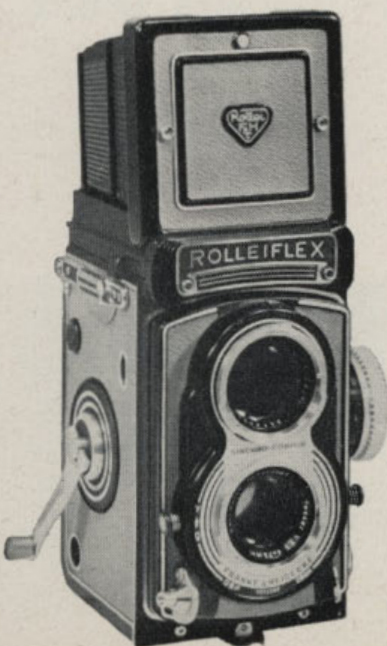
A fast high-performance reflex camera designed to meet the needs of the advanced amateur photographer. Fitted with a Synchro-Compur shutter with speeds from 1 to 1/500 sec. and "B". This new model Rolleicord Va features interchangeable counting devices and masks to permit the use of 35mm. Kodachrome colour film as well as the standard 120 black-and-white film for 12 (2¼" x 2¼") or 16 (1½" x 2½" or 1½" x 1½") exposures. In addition, it possesses most standard features of the Rolleiflex except the built-in exposure meter.



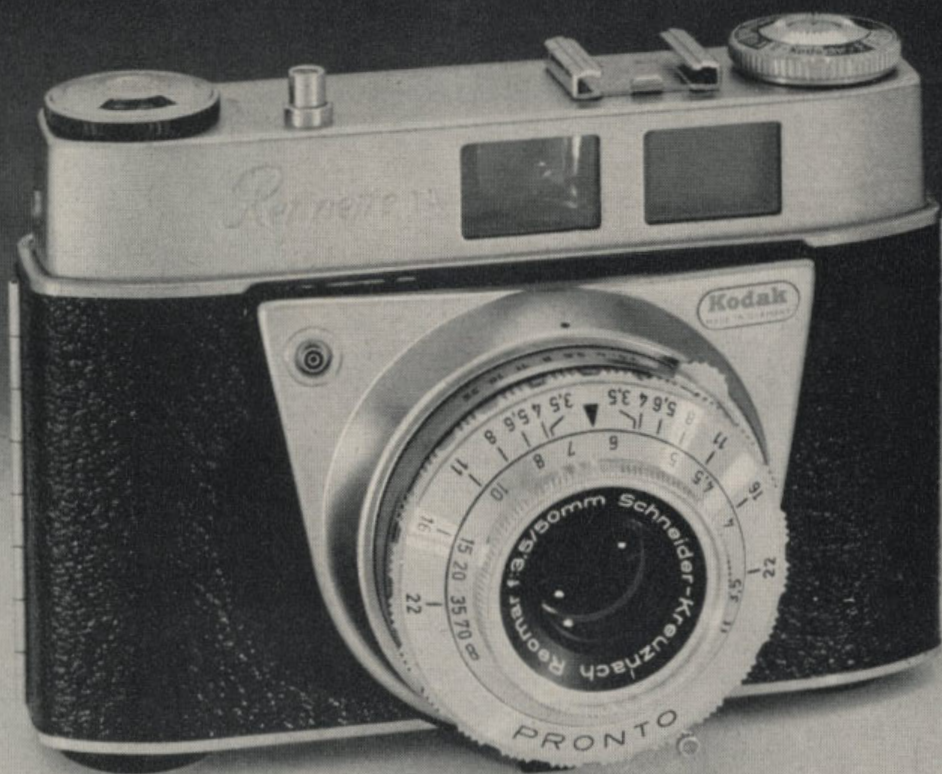
The Rollei System:

A most comprehensive range of Rollei accessories is also available to form a very efficient well-integrated system of reflex photography. The range comprises: Extension focusing hood; lens hood; Rolleigrid lens (for better viewing in poor light); Rolleifix tripod head; Rollei desiccant cartridge; leather carrying cases (for cameras as well as lens attachments); Rollei filters (for black-and-white photography); Rolleipol filters (light polarising); Rollei colour conversion filters (for colour photography); Rolleinar close-up lenses; Rolleisoft diffusing lenses; Rolleimeter (optical rangefinder); Rolleimarin (for housing Rolleiflex f/3.5 for underwater photography); panorama tripod head; Rolleikin 35mm. film adapter; plate adapter; and Rolleiflash.

PRICES: Rolleicord Va, with f/3.5 75mm. Xenar lens and Synchro-Compur CRMXV shutter, without case	£48.5.0
Rolleiflex 4 x 4, with f/3.5 60mm. Xenar lens and Synchro-Compur CRMXV Shutter, without case	50.12.0
Rolleiflex, with f/3.5 75mm. Planar lens, with meter and Synchro-Compur CRMXV shutter without case (Illustrated Above)	116.18.0
Rolleiflex with f/2.8 E2 80mm. Planar lens, with meter and Synchro-Compur CRMXV shutter, without case	119.15.0
Rolleiflex "T" with 75mm. f/3.5 Zeiss Tessar lens, without meter or case	63.10.0
(Illustrated Left)	



KODAK *Retinette* cameras...



RETINETTE IA

Undoubtedly the best 35mm. camera value ever to come out of Germany — combines precision with simplicity at a price that is truly sensible and within the reach of all. It is fitted with a fast colour-corrected three-element 50mm. Schneider-Reomar f/3.5 lens and four-speed Pronto shutter (1/30, 1/60, 1/125, 1/250 and "B"). One of its most interesting features is the large clear viewfinder with its bright-line frame. Your exact picture area is shown within the frame while the surrounding area is still visible — a great help when composing the picture particularly with colour film which has certain limitations for trimming the final transparency. Indication marks on the bright-line frame also enable correction to be made for parallax. Furthermore this frame is a great boon to spectacle-wearers. Other popular Retinette IA features are: Built-in flash contacts; automatic film counter; lever wind; focusing from 3½ feet to infinity; depth-of-field indicator; accessory shoe; all-metal construction with smart black leatherette and satin-chrome finish. Accepts all 20 and 36-exposure magazines, black-and-white or colour.

PRICE: £17.5.0. (including case)

Retinette IA Camera Outfit

Complete outfit for 35mm. colour photography — by flash or by daylight. Contains famous Kodak Retinette IA Camera with f/3.5 lens and shutter to 1/250 sec., always-ready leather case, Brownie Flashholder and Kodak Flash Adapter, flashbulbs, batteries, Kodachrome Film, Kodaslide Pocket Viewer and instructions.

PRICE: £22.10.0



RETINETTE IIA

The ideal choice for those who want to take good pictures without the worry of "having to learn a lot about photography." So easy, too — the built-in photo-electric meter does the work for you. Here's how: Set the camera to the speed of the film you are using as you aim the camera at the subject, the meter automatically measures the light; then, simply rotate the large shutter ring until the moving pointer in the bright-line frame viewfinder reaches the marked central position; then press the button. No shutter speeds or lens apertures to worry about — they are adjusted automatically. The Prontomat shutter, with separate "daylight" and "flash" settings only, ranges between 1/30 and 1/300 sec. Focusing is also made easy with the automatic depth-of-field indicator. The Retinette IIA is fitted with a three-element colour-corrected 45mm. Schneider-Reomar f/2.8 lens. In addition, it has all the regular features of the Retinette IA camera. Complete with leather always-ready case.

PRICE: £34.5.0.

RETINETTE IB

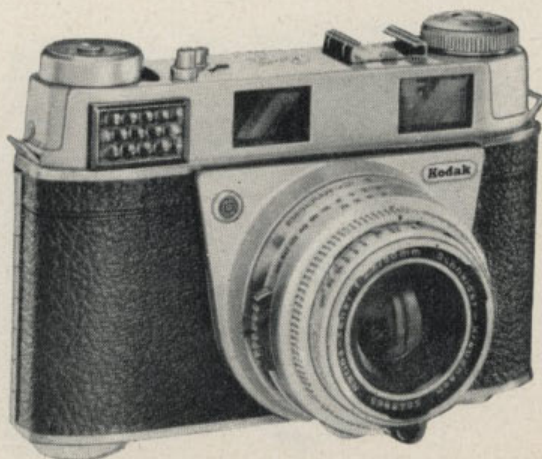
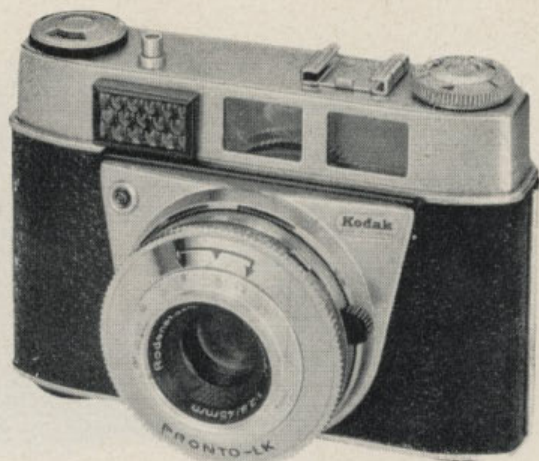
A medium-priced 35mm. camera having semi-automatic control for perfectly exposed pictures. Complete manual control is also possible for flash or other purposes. Correct light value is "read" by the built-in light meter and exposure is set by centring a needle seen in the "bright-line" viewfinder. The needle is adjusted by rotating the shutter or aperture rings. Fitted with a 45mm. Rodenstock Reomar f/2.8 lens and 6 speed Pronto LK shutter with separate "flash" and daylight settings ranging between 1/30 and 1/500 sec. Focusing from 3½ feet to infinity is simple with an easy to read depth of field scale. Delayed action is also provided. Complete with leather always-ready case.

PRICE: £31.8.0.

RETINA IIIS

Simply superb — it does your thinking for you, yet it has the widest possible versatility. No expert knowledge needed — simply aim the camera at the subject, rotate the setting wheel underneath the camera to superimpose the two pointers of the exposure meter (this automatically sets the correct aperture for the shutter speed in use), and press the button. Focusing is also made easy with the built-in coupled rangefinder which enables you to set the distance exactly while viewing the subject in the viewfinder. Its features include: Fast colour-corrected four-element 50mm. Retina-Xenar f/2.8 lens; 10-speed Synchro-Compur shutter; automatic depth-of-field indicator; full flash synchronization; built-in exposure meter with automatic exposure control; large-image viewfinder with automatically reflected bright frame; automatic parallax compensation for all focal lengths; coupled rangefinder for focal lengths from 28mm. to 135mm. Complete with imported always-ready case.

PRICE: £67.7.6.



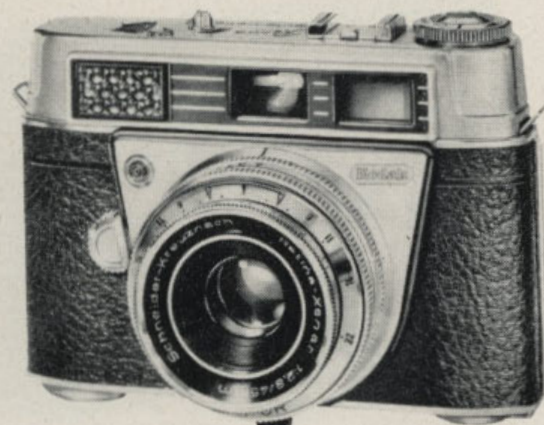
RETINA AUTOMATIC CAMERAS



RETINA AUTOMATIC I

Aim — Frame — Focus — all through the viewfinder. Press the button. Result — a brilliant, correctly-exposed picture every time. If the light is unsuitable, the shutter release will not operate and a "stop" signal flashes into the finder. Features include Retina-Reomar f/2.8 45mm. lens by Schneider-Kreuznach; Prontomat-S shutter for daylight or flash pictures; "bright-line" viewfinder; distance indication by light signals in finder; rapid film wind — one movement advances film, counts exposures and "cocks" shutter. Beautifully designed and complete with imported leather case.

PRICE: £55.



RETINA AUTOMATIC II

A fully automatic precision 35mm. camera that is simple to use, yet has all the features necessary to satisfy the most discriminating expert. These features include all those of the magnificent Automatic I plus manual control that permits the lens aperture and shutter speed to be set in the conventional way, using the built-in exposure meter for guidance. It is fitted with a 4-element Retina-Xenar f/2.8 45mm. lens by Schneider-Kreuznach, and 6-speed Compur shutter to 1/500th sec. Other features include depth-of-field indicator, cable release and flash sockets. With imported leather case.

PRICE: £63.12.6.



RETINA AUTOMATIC III

This is truly the ultimate in automatic cameras. Fully automatic — just aim and press the button. Lens settings can be operated manually if desired. The Retina Automatic III Camera includes all the features of the Retina Automatic II, such as the Retina-Xenar f/2.8 45mm. lens, a 6-speed Compur flash-synchronized shutter, and an automatic exposure lock with "stop" signal which operates if the light is insufficient for correct exposure. In addition, a coupled range-finder is fitted for precise measurement of distance. Complete with imported leather case.

PRICE: £69.18.6.



RETINA REFLEX III

You'll master even the most difficult photo situation with this new model of the famous Retina Reflex camera . . . it introduces dual photo-electric exposure control for greater operating ease and maximum versatility. For instance, you view and focus through the lens — see your subject as the lens does, and almost life-size. You can set exposure precisely without taking the camera from your eye. Simply centre the needle of the photo-electric exposure control between two brackets in the viewfinder — this is achieved by manually rotating a small wheel under the lens (this action automatically sets the correct lens opening for the subject being photographed.) You choose shutter speeds up to 1/500 for rapid action. Advance film with one flick of your thumb. You command distance and breadth of view with a wide choice

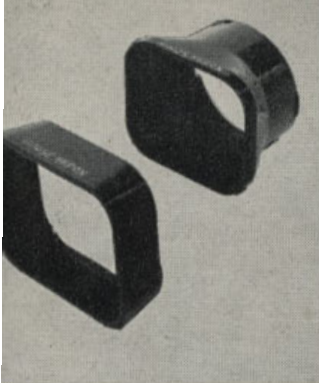
of interchangeable Kodak Retina Lenses, from 28mm. wide-angle to 135mm. telephoto. In short, the Kodak Retina Reflex III Camera is a unique combination of versatility, simplicity and precision to make it one of the great cameras of the world. Here are some of its main features: Retina-Xenar 50mm. f/2.8 (or Retina-Xenon 50mm. f/1.9) lens; Synchro-Compur 10-speed shutter with automatic depth-of-field indicator; parallax free viewing; automatic pre-set diaphragm for focusing at full aperture; split-image rangefinder (centred in the ground-glass viewfinder); flash synchronised at all speeds; "safety-lock" shutter release; built-in self timer; double exposure prevention; complete with imported always-ready case.

(Stocks arriving early 1962.)

The Retina System

Your new Kodak Retina Camera is more than just a camera. The name "Retina" includes a complete family of aids — each one engineered specifically for precision Retina cameras and designed to keep pace with your photographic interests. They add up to a system which grows as your skills and interests grow. For instance, there's the full range of superb interchangeable

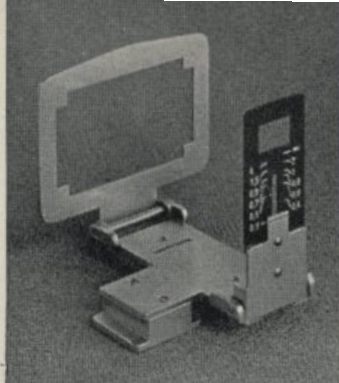
lenses, a variety of special lenses, rangefinders, camera stands, etc.; there are special viewfinders for fast action and right-angle shots; there's a special adapter kit for photo-micrography; plus a wide range of filters, lens hoods, etc. In short, the Retina system keeps you and your photography right up to date so that "you will never outgrow your Kodak Retina Camera."



Retina Lens Hood

The rectangular shape of the lens hood for the Retina range of cameras is particularly effective in screening off disturbing reflections. It is firmly fixed in front of the standard lens of the camera by means of a bayonet mount.

PRICES: Standard lens, 16.0.



Retina Frame Finder

Specially designed for shooting moving subjects and quick-changing scenes such as sports pictures. In two models to suit standard and telephoto lenses — both have parallax compensation down to a taking distance of 12in. and thus can be used for close-ups with supplementary lenses.

PRICE: £2.15.0.

KODAK RETINA ACCESSORIES



Retina Interchangeable Lenses — Series S

Designed to give an immense new scope to your Retina IIIS or Retina Reflex S. These new lenses replace the complete lens assembly to provide an efficient and perfectly matched unit for your camera. When in use with a Retina IIIS they provide a reflected brilliant frame in the finder to show the correct field corresponding to the lens fitted. When in use with a Retina Reflex S the "through the taking lens" viewfinder shows the exact picture area. Lenses available are:

Standard Lens: 50mm. f/2.8 Retina Xenar or Retina Ysarex; 50mm. f/1.9 Retina Xenon or Retina Heligon.

Telephoto Lens: 85mm. f/4 Retina Tele-Arton or Retina Rotelar; 135mm. f/4 Retina Tele-Xenar or Retina Rotelar.

Wide Angle Lens: 35mm. f/4 Retina Eurygon or 35mm. f/2.8 Retina Curtagon and 28mm. f/4 Retina Curtagon. Also available are a wide range of interchangeable lenses to fit Retina IIC, IIIC and Reflex cameras. Prices on application.

Retina Micro-Adapter

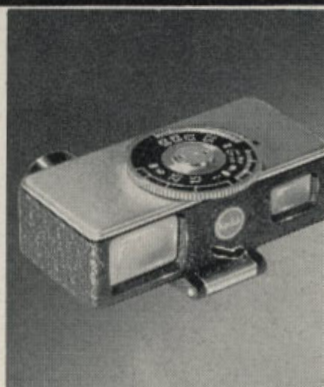
Joins camera and microscope together to form an excellent unit for photomicrography. Incorporates semi-reflecting prisms, plus a monitoring eye-piece to allow visual focusing, depth-of-field control, as well as inspection during exposure. The scale of reproduction is one-fifth of the visual image.

PRICE: £21.17.6

Retina Close-Up Rangefinder Kit

Extends focusing down to 12 in. Kit consists of a super-imposed type of range-finder combined with a parallax - correcting viewfinder, two supplementary lenses, and a case. Once the object is sighted the finder is adjusted until the two outlines fuse into one.

PRICE: £12.19.6.



Retina Copying Stand

Is a lightweight collapsible stand for copying books, documents, etc., up to 11½ x 8½ in. Must be used in conjunction with the N2 supplementary lens. Provision has been made for the fitting of supplementary lighting.

PRICE: £12.4.0.

Retina Table Stand

Designed especially for accurate close-up work — excellent for use with the Close-Up Rangefinder (and N lenses) or the Close-Up Attachment (and R lenses). Has rigid base, telescopic column, ball-and-socket head, and a right-angle head.

PRICE: £17.18.6.

Retina Close-Up Attachment

Together with its supplementary R lenses this attachment employs the focal-frame method of close-up photography of tiny subjects at distances of 6 to 11 inches. Four different sizes of subject areas covered by R lenses are: 4 x 6 in.; 3 x 4 in.; 2 x 3 in.; and 1½ x 2 in.

PRICE: £7.3.0.

Retina Stereo Attachment

Can be fitted to the standard lens of the Retina IIC or IIIC in a matter of seconds, making the camera "see" in three dimensions. It records two vertical images on a standard 35mm. frame which, when viewed, are three dimensional and amazingly life-like.

PRICE: £21.13.0.

Your valuable camera deserves the protection of a KODAK LEATHER CARRYING CASE



Left:

BOX TYPE: Add years to the life of your box Brownie camera by protecting it from dust, moisture, shocks, etc., with one of these sturdy carrying cases. Made of top-quality processed leather to last a lifetime. With carrying straps and metal catch.

PRICES: Six-20 Brownie; Pig Skin £1.0.0;

Centre:

SLING TYPE: Designed and constructed to take the hardest knocks, these carrying cases are made from quality processed leather, and are fitted with a sturdy metal clasp and two strong leather



carrying straps. For Kodak Junior and similar folding-type cameras.

PRICES: All models, £1.9.6.

Right:

ALWAYS-READY TYPE: Smart, convenient and safe — tailor-made to fit the camera. Simply open the flap and operate the camera without removing it from the case. Expertly finished in finest quality processed leather. With adjustable straps and strong metal catch.

PRICES: Kodak Retinette £3.0.0; Kodak Retina £3.10.0.

Not Illustrated:

Carrying case for Brownie Star Cameras, 16.0.
Carrying case for Brownie 127 Camera, 7.3.

Brownie Gadget Bag

A handy inexpensive gadget bag for all your photo equipment. Finished in light tan it has a strong shoulder strap, a full-length zip fastener and metal stud feet for longer life. (Midget model also available, 14.9.)

PRICE: £1.15.0

Kodak Senior De Luxe Shoulder Bag

Finished in soft natural tan; contains movable compartments for camera, meter, etc., while inside the lid is a zippered pouch for filters, etc. Has a buttoned-in soft chamois for last-minute cleaning. Dimensions, excluding exterior pouch, 8½ in. x 6½ in. x 4½ in.

PRICE: £8.2.6

Kodak Junior De Luxe Shoulder Bag

Made from solid hide that provides safety and protection for camera, accessories, etc. Has adjustable interior compartments, cleaning chamois, large outside pouch, zippered interior pouch, adjustable padded shoulder strap. Dimensions 11½ in. x 5 in. x 7½ in.

PRICE: £5.11.6

KODAK 15



Aids to Better Picture Making...

Kodak Universal Flash Adapter

Combines with the inexpensive Brownie Flashholder to form a synchronized flash unit for use with most 35mm. cameras such as the Kodak Retinette. It slips into the accessory shoe on the camera.

PRICE: 12.6.



Barton Ball-and-Socket Tripod Head

The ball-and-socket head enables the camera to be tilted to almost any angle, thus facilitating subject selection and avoiding camera shake.

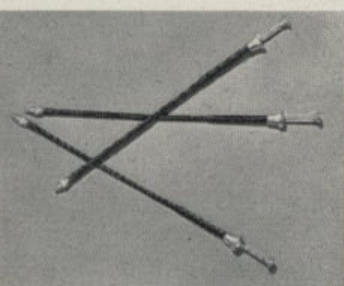
PRICE: 19.3.



Braided Cable Releases

A 'must' for time exposures — their use minimises camera shake, and makes for better pictures. Various lengths and threads.

PRICES: 3½ in., 4.4; 6 in., 5.6; 10 in., 6.6.



Austral Lens Cleaning Tissue

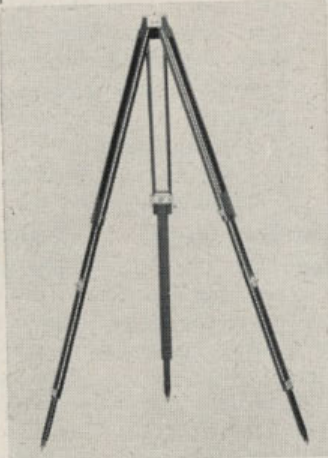
Finest quality white velvety-soft tissue that will not damage the surface. In books of 10 sheets.

PRICE: 6d.

Zenith 3-Section Tripod

Zenith's screw collar-lock system enables the extension legs to be tightly gripped so that the tripod height covers an extension range of 19 to 44in. from floor level; folds up into 21in. Has solid aluminium head, spiked tips, standard thread, plastic strap. Weight 1½ pounds.

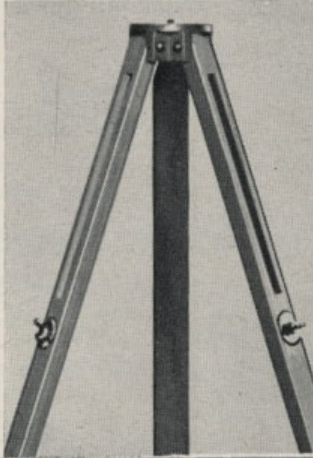
PRICE: £5.5.0.



Zenith 2-Section Tripod

(Illustration shows top only.) Can be adjusted so that the tripod head can be used at any height between 26½ and 47½in. from floor level. Folds up into 27½in. In smart natural wood finish. Weight 1½ pounds. Otherwise, similar to 3-section model.

PRICE: £3.1.3.



Rowi Tripods

Rowi Roundax (close right): A sturdy, lightweight seven-section tripod constructed in quality brass. Reliable ball-and-socket head permits the camera to be tilted at any angle. **PRICE: £7.8.9.**

Rowi Turn (centre right): Features a reversible tripod head to provide either ¼in. or ½in. thread, accomplished simply by turning over tripod legs.

PRICES: 4-section brass, £5.19.6; 3-section nickel, £2.16.3; 4-section nickel, £3.9.0.

Rowi Flat (far right): Compact seven sections telescope down to nearly pocket size. Made from quality brass and finished in chrome with ribbed outer tubes. and finished in chrome. **PRICE: £7.5.3.**



Aids to correct negative exposure . . .



PALEC PE3

Exposure Meter

Designed for use with still, movie, and colour photography by either "incident light" or "reflected light". The PE3 is extremely sensitive to all lighting conditions — incorporates two brightness ranges which adjust themselves automatically whether the light is bright or very dull. So easy to use, too — requires only two adjustments to give a direct exposure reading: (a) Set the ASA film speed index; (b) Align the cursor arrow over the cell needle. The exposures are then read from the scales by either: (a) the shutter speed and f. number system; or (b) the light values system. For incident light readings, the baffle is snugly stored into the meter body and can be readily fitted over the photo-electric cell. Other important features are: shock-resistant meter movement; extreme sensitivity embraces shutter speed readings from 60 seconds to 1/1000 second, and f. stop numbers from f/1 to f/32; shutter speed scales follow the modern trend in calibration (1/30, 1/60, 1/125 second); large easy-to-read figures on all scales; of strong, compact, light-weight construction — weight 5½ oz.

PRICE: £12.4.6.

KODALUX

Exposure Meter

Beautifully designed and craftsman constructed to last a lifetime. For use with colour or black-and-white, still or movie films. Simple to use — once the film speed is set, a knurled ring is rotated until two arrows coincide. All combinations of lens openings and shutter speeds are shown on an easy-to-read scale. Light values are also shown.

Designed primarily to slip into the accessory shoe of Retina and other 35mm. cameras, it can also be used in the solid hide case supplied. An ingenious incident light shield is also provided.

PRICE: £11.17.0.

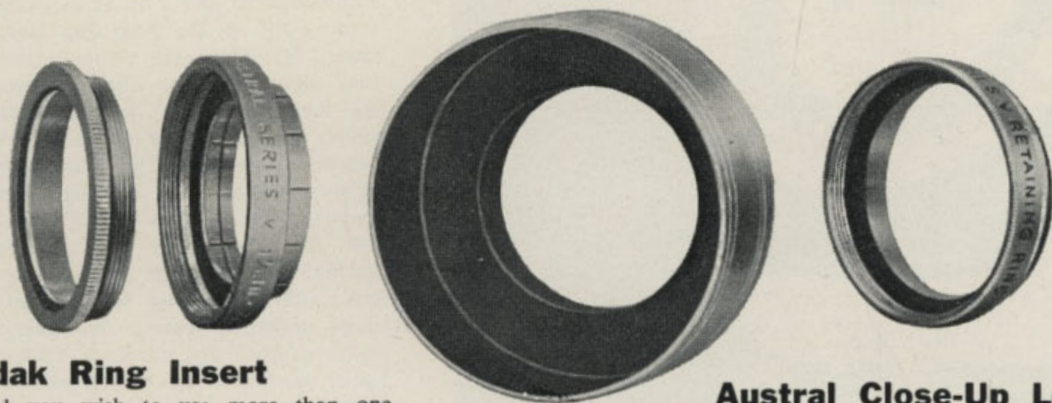


Kodak Lens Attachments make your camera a better camera

Kodak Adapter Ring

The basic unit to widen the scope and efficiency of your camera — permits the ready exchange of numerous unmounted filters and auxiliary lenses. Comprises two parts: an adjustable Adapter Ring and a Retaining Ring — each accurately made in strong, lightweight metal alloy. Has slip-on mount with adjustable prongs.

PRICES: Series V, £1.3.6; Series VI, £1.4.3.



Kodak Ring Insert

Should you wish to use more than one lens attachment for one exposure — say a filter, a close-up lens and a lens hood — the Kodak Ring Insert becomes the "connecting link" to bind all these units into one complete assembly. Inside and outside threads ensure a safe, snug fit.

PRICES: Series V and VI, 8.6.

Kodak Lens Hood

Just as you would shade your own eyes from sun glare and reflections, so does the Kodak Lens Hood protect your camera lens. In use, the Kodak Lens Hood screws into the Kodak Adapter Ring, and replaces the Retaining Ring of that unit. Strongly made of lightweight alloy.

PRICES: Series V, 16.0; Series VI, 16.5.

Austral Close-Up Lenses

(Not illustrated.) Slip one of these handy lenses into a Kodak Adapter Ring and you'll have a new field of picture-making just waiting for your camera — this includes portraits of people and close-up photography of animals, flowers, etc. Austral Close-Up Lenses are made from fine quality glass in three degrees of magnification (+1, +2, and +3). Sizes available are 32mm. (to fit Series V Adapter Ring) and 42mm. (to fit Series VI Adapter Ring).

PRICES: 32mm., 10.6; 38mm., 10.0; 42mm., 11.1.

SERIES V		SERIES VI		SERIES VII		SERIES VIII	
19mm (3/4 in.)	20.5mm (1 1/8 in.)	22mm (7/8 in.)	23.5mm (1 1/4 in.)	25.5mm (1 in.)	26mm (1 1/8 in.)	27mm (1 1/4 in.)	28.5mm (1 1/8 in.)
30mm (1 1/8 in.)	31.5mm (1 1/4 in.)	32mm (1 1/8 in.)	33mm (1 1/4 in.)	35.5mm (1 1/4 in.)	36.5mm (1 1/2 in.)	37mm (1 1/2 in.)	38mm (1 1/2 in.)
39.5mm (1 5/8 in.)	41mm (1 5/8 in.)	42mm (1 5/8 in.)	42.5mm (1 5/8 in.)	44.5mm (1 3/4 in.)	46mm (1 1/2 in.)	47.5mm (1 3/4 in.)	49mm (1 7/8 in.)
50.5mm (2 in.)	52mm (2 1/8 in.)	54mm (2 1/4 in.)	55.5mm (2 1/8 in.)	57mm (2 1/4 in.)	58.5mm (2 3/8 in.)	60mm (2 3/8 in.)	62mm (2 3/8 in.)
63.5mm (2 1/2 in.)	67mm (2 5/8 in.)						

HOW TO ORDER KODAK LENS ATTACHMENTS

To obtain the diameter of a lens mount, lay the scale at left across the centre of the lens, with the arrow touching the outside edge of the lens mount. The line which touches the outside edge of the mount directly opposite then indicates the Kodak Adapter Ring size in inches and the series number of all Kodak Lens Attachments for that lens. If no listed size offers an exact fit, select the next larger size. The clamp prongs can be bent slightly to grip the mount.

Add punch to your pictures with

Austral Filters

Whatever your picture-making interests there is sure to be an Austral filter to help you . . . for filters dramatise pictures, give them a fresh sparkle and a new emphasis. As the name implies, the action of a filter is to retard light of certain colours—hence the tonal contrast is increased and the resulting picture greatly improved. In 31, 32, 38 and 42mm. sizes.

YELLOW: Just the filters to put punch into your pictures . . . they snap up the cloud effects by darkening the blue tone of the sky . . . they give certain degree of haze penetration in distant and mountain scenes. Available in light yellow and medium yellow.

YELLOW-GREEN: An ideal compromise between a yellow and a green filter. Here's what it will do for you: darken the sky for better cloud effects, penetrate distant haze, improve foliage and grass by rendering them lighter.

GREEN: For landscape, garden, and flower scenes where large masses of green foliage tend to dominate the picture—it lightens the greens and improves their detail; it will also darken the tone of blue sky and emphasise cloud effects.

ORANGE: For striking vigour and contrast particularly with panchromatic emulsions. Gives slight over-correction resulting in really beautiful seascapes, where it darkens both sky and water. Excellent for light architectural subjects against blue skies and gives greater penetration of haze than yellow filters.

RED: Its exaggerated renditions of darkened skies are truly spectacular, particularly when the elements are blue sky, white clouds, and strongly lit foreground.

BLUE: Gives improved tonal rendition and modelling by off-setting the excess yellow light normally associated with artificial lighting conditions.

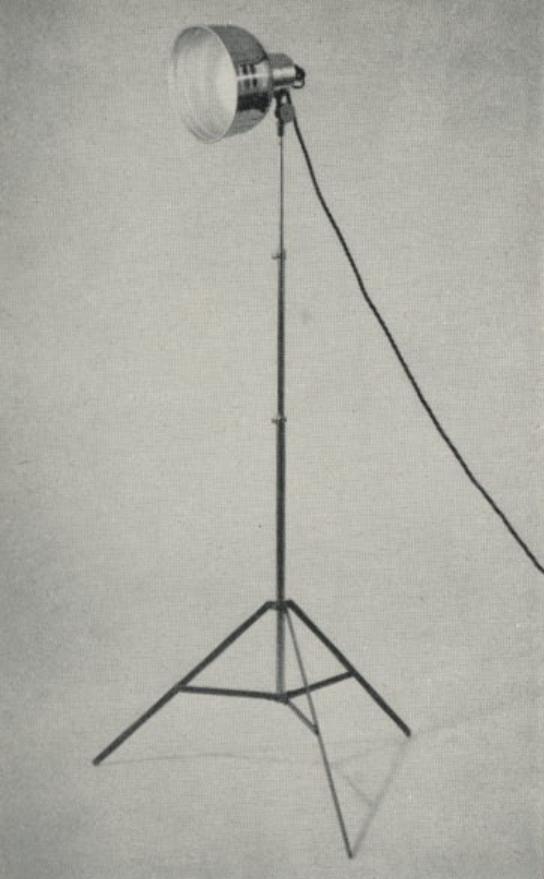
ULTRA VIOLET: Reduces excessive blue sky effects in Kodachrome slides caused by invisible ultra-violet rays in the atmosphere. It likewise reduces bluish haze in snow scenes and seascapes; adds warmth to colour slides exposed in open shade and on overcast days.

CONVERSION (Kodachrome Type A to Daylight): Permits the use of Kodachrome Type A (artificial light) film in daylight. Normal daylight exposures can be given with excellent results.

PRICES:

31mm., 32mm. (light yellow, medium yellow, light green, yellow-green, orange, blue and ultra-violet)	11.9
31mm., 32mm. red	14.0
32mm. conversion Type A — Daylight	15.3
38mm. above colours	12.9
38mm. red	15.3
42mm. above colours	13.6
42mm. red	15.9
42mm. conversion Type A — Daylight	18.9





Floodlighting Equipment

to help you make fascinating indoor night snapshots at home

Barton Single Unit Reflector

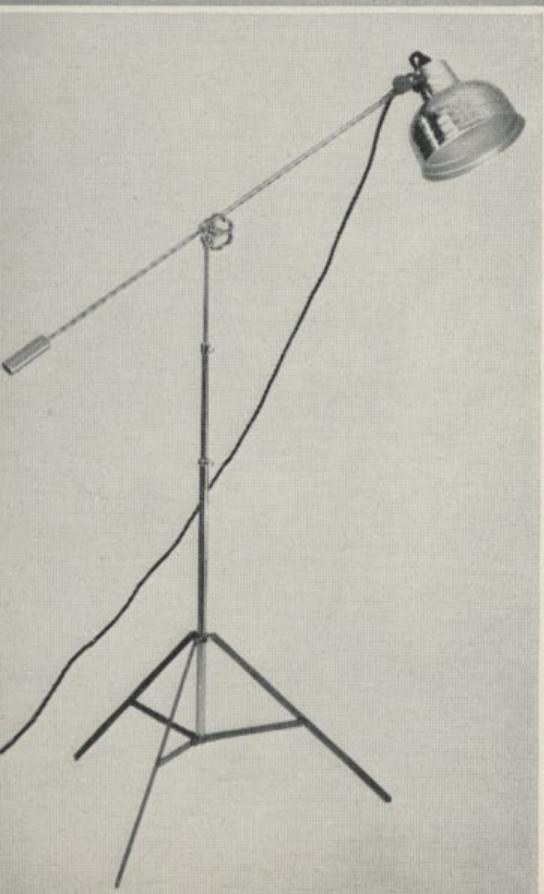
An ideal all-purpose lighting aid for around-the-clock picture-making; is designed to bring the utmost simplicity to indoor photography. Of sturdy, light-metal construction throughout, with triple extension stand and folding tripod legs. The reflector is complete with screw socket fittings, six feet of flex and 3-pin plug. Additional reflectors on extension arms may be attached.

PRICE: £8.18.0.

Barton Junior Boom Floodlight

A versatile lighting unit for the more advanced enthusiast. Ideal for both stills and movies, the boom permits lighting from overhead for modelling, etc. Comprises an all-metal collapsible stand with folding tripod legs, standard reflector and a counter-balanced boom. Complete with flex, plug and all fittings; it accepts screw-in type floodlight lamps.

PRICE: £11.10.0.



(A) Barton Spring Clamp Reflector

Will clamp on to anything thus permitting a full concentration of light in any direction, this by means of a ball-and-socket fitting. Fitted with B.C. lamp holder and built-in switch. Clamps are rubber-covered to prevent scratches.

PRICE: £5.12.6.

(B) Barton Floor Light

Consists of a single reflector equipped with a standard E.S. socket, mounted on an adjustable upright; has rigid tripod base with rubber tips. Supplied with 6 ft. of flex and a 3-pin plug.

PRICE: £5.3.6.

(C) Barton Junior Floodlight

Its adjustable stand and arm permit it to be directed wherever desired. It is compact, light in weight, and readily portable, with a highly-efficient all-metal reflector fitted with a B.C. lamp holder, flex and plug.

PRICE: £3.8.3

(D) Barton 500-Watt Spotlight

Because of its light weight and narrow beam angle, this spotlight is suitable for close-ups and special effects. Has well-ventilated lamphouse; uses 240-volt 500-watt E.S. Floodlight Lamp on an adjustable base.

PRICE: £25.7.6.



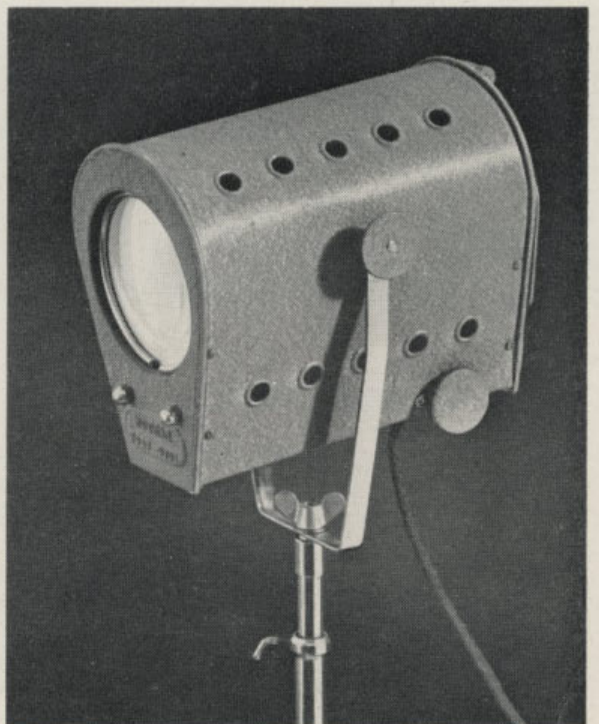
A



B



C



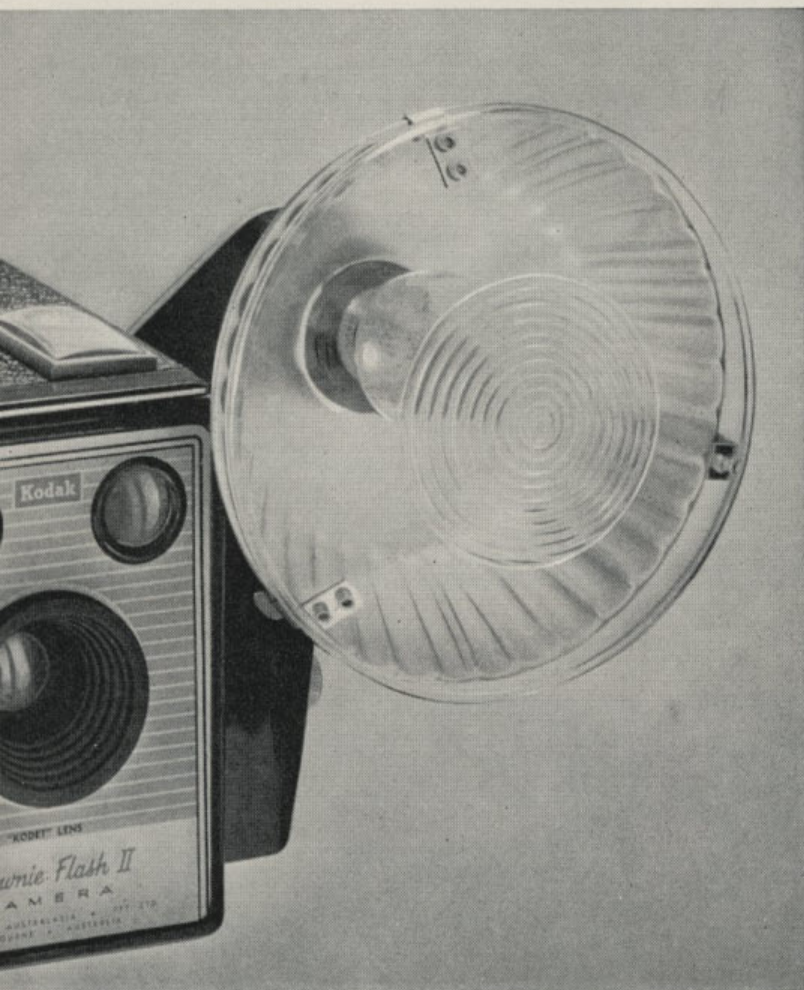
D

FLASH

is easy ...

FLASH

is fun ...



BROWNIE FLASHHOLDER

Now you can follow the new, popular trend of "flashsnapping"—the fun and pleasure of taking flash pictures anywhere, at any time. It's all so easy with the Brownie Flashholder which is designed to screw direct on to the Brownie Flash II Camera (and all other cameras with "screw and pin" fitting) without the need for using a cable and bracket—in this manner perfect synchronisation is made so that the flashbulb fires the instant the shutter release (on the camera) is pressed. Its trim, compact (4in. diam.) curved aluminium reflector concentrates the light to give maximum brilliance; the hinged clear plastic flashguard diffuses it slightly to yield softer shadows. It accepts only the economical capless flashbulbs (e.g., G.E.C. No. 1 and PF No. 1); an ejector pin releases the hot bulb after firing. The body is sturdily moulded in black plastic; it is designed for use with two 915 size AA Eveready or similar batteries. Available separately is a special Kodak Adapter (see page 16) which enables the Brownie Flashholder to be used with Kodak Retina cameras with flash contacts.

PRICE: £1.7.6

RETINA KODABLITZ

A precision made flash unit designed primarily to slip into the accessory shoe of Retina and other 35mm. cameras, it can also be used on an extension bracket, or separated from the camera.

The Kodablitz is powered by a 22.5 volt dry battery which will also power two or three extension units. The grained surface of the reflector is designed on the latest advances in light technique to ensure maximum efficiency and give a powerful yet diffused flash of light. Has push button release for used bulbs.

PRICE: £3.11.9



Photographic Lamps . . .

to provide you with "artificial sunlight"
when you want it and how you want it

Flashbulbs



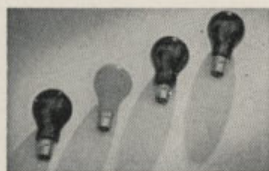
When neither daylight nor floodlight is available or suitable, the flashbulb is the obvious choice — it gives a brilliant flash of light when and where you want it without con-

sequence of weather conditions. Alternatively, the flashbulb can be used to supplement both flood and daylight where necessary. A wide range of bulbs is available from the tiny capless G.E.C.1 and PF.1 to the powerful PF.100. Blue coatings are available for use with Kodachrome film (daylight type) when used indoors with flash.

PRICES:

G.E.C.1, Capless	1	3
G.E.C.1Bs Capless	1	4
G.E.C.5z Capless	1	7
Photoflux — PF.1 Capless	1	3
PF.1B, Blue, Capless	1	4
PF.5, Capless	1	7
PF.60, E.S.	2	11

Darkroom Lamps



Top quality lamps designed to give maximum illumination with perfect safety — made by the reliable house of Philips. Each has its special purpose in darkroom procedure — red

for developing orthochromatic films; green for inspection during development of panchromatic films (e.g., Verichrome Pan); yellow for developing Velox paper; yellow-green for Bromesko and Bromide paper. Available in a range of colours in sprayed or natural colour glass and fitted with B.C. bases.

PRICES:

Philips — B.C., Dark Red (Colour Glass)	8	1
B.C., Green (Colour Glass)	8	1
B.C., Green (Neon Filament)	9	4
B.C., Yellow (Colour Glass)	5	11
B.C., Yellow-Green (sprayed)	5	5

Floodlighting Lamps



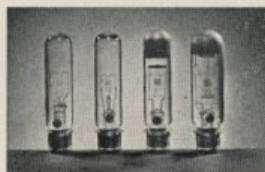
Probably the best and easiest lighting source for home picture making — they're so easily fitted to normal household units such as reading lamps, and yet give that ever-necessary bril-

liance. Specially designed and made by B.G.E. and Philips for photographic use, these lamps give an intense light of high actinic value. Also available are mirror-backed lamps that effectively combine both reflector and light source in one easy-to-use lamp.

PRICES:

Argaphoto — 500W, Type B	24	2
500W, Type BM	36	6
Photoflood — No. 1 250W, 2-3 hour	4	11
No. 2 500W, 6 hour	12	1
500W, 100 hour	24	5
Photolita — 250W, 2-3 hour	4	11
250W, mirror back	12	3
500W, 6 hour	12	0
500W, mirror back	21	0

Projector Lamps



Just as your eyes appreciate a good light for reading, so do your slides and movies project better with the correct lamp in your projector. All lamps are of high quality and are

dependable — produced by the famous electrical houses of B.G.E., Philips and A.E.I. In the standard bases to fit all projectors.

PRICES:

100W, 32V, A.S.C.C.	19	6
100W, 240V, P28	19	6
150W, 240V, A.S.C.C.	18	6
150W, 100V, P28	19	6
200W, 240V, P28	27	0
250W, 240V, P28	28	0
300W, 240V, P28	31	6
300W, 100V, A.S.C.C.	30	6
400W, 100V, B. & H.	40	6
500W, 240V, Prefocus	45	0
500W, 250V, P28	42	9

FLASH EXPOSURE DATA

How to take flash pictures . . .

WITH BOX-TYPE CAMERAS

Firstly: Ensure that the flash unit has fresh batteries, that the camera shutter is set at "I" (instantaneous), and that your flashbulb is firmly seated in the socket. Many a good shot has been wasted because of incorrectly inserted flashbulbs.

Secondly: Make sure that the distance of your subject from the flash unit is in accordance with the type of film and flashbulbs being used. For instance, if your camera is loaded with Kodak Verichrome Pan Film and you're using PFI flashbulbs, an ideal distance between flashholder and subject is 6-17 feet.

WITH ADJUSTABLE-TYPE CAMERAS

Any adjustable camera with an accessory shoe and standard flash cable socket can be used for flash work. One of the most economical ways is to use an inexpensive Brownie Flashholder which, with a Kodak Universal Flash Adapter, can be attached to your camera. The advantage of an adjustable camera for flash pictures is that the amount of light reaching the film can be varied, allowing a greater range of distances to be used. It is generally agreed that the best method of calculating correct exposures for flash pictures is to use Flash Guide Numbers. A table of Flash Guide Numbers appears at right, and they are used as follows: Choose the appropriate Guide Number for the type of film, flashbulb and shutter speed being used. Divide the Guide Number by the flash-to-subject distance in feet and the resultant answer is the aperture or *f*/number. For example: With Kodak Verichrome Pan Film and PF5 Flashbulbs at 1/30 second shutter speed, a Guide Number of 280 is recommended. If your subject is 25 feet away from the flash, the aperture will be 280 divided by 25 feet = *f*/11.

Note: Some cameras have two settings for flash, viz. "X" and "M." Check your camera instruction book to ensure that you use the correct setting. As a general rule, the "M" setting should be used for Philips and G.E.C. flashbulbs, and the "X" setting for electronic flash.

To ensure that all the light from a flashbulb is recorded on the film, a shutter speed of 1/25 or 1/30 second is recommended. Of course, faster speeds can be employed with consequently diminishing guide numbers, but it should be remembered that when faster shutter speeds are used, much of the light is wasted.

For full information on flash photography under unusual circumstances, see the Kodak Data book: "Flash Technique." Finally, it is important to note that the Guide numbers are only *guides*. Many other influences affect correct exposure, such as colour and reflecting power of walls and ceiling, the colour of the subject, the size of

FLASH-TO-SUBJECT DISTANCE WITH BROWNIE CAMERAS

FILM	ASA SPEED NUMBER	GEC 1 PFI	GEC 5Z PFS	GEC 1Bs PFI
VERICHROME PAN	125/5°	6-17ft.	9-18 ft.	—
TRI-X PAN	400/7°	10-30 ft.	16-32 ft.	—
KODACOLOR	32	6-10 ft.	9-12 ft.	—
EKTACHROME	32	—	—	6-10 ft.

Thirdly: Just aim and press the button. The camera shutter will open and the flash will fire in synchronisation, giving you a sparkling, clear picture.

FLASH GUIDE NUMBERS FOR KODAK BLACK-AND-WHITE AND COLOUR FILMS

FILM	ASA SPEED NUMBER	SHUTTER SPEED	PFI GEC 1	PF5 GEC 5Z	PF1B GEC 1Bs	PF24 FOCAL PLANE
VERICHROME PAN	125/5°	1/30	180	280	—	—
		1/60	180	260	—	200
TRI-X PAN	400/7°	1/30	320	500	—	—
		1/60	320	420	—	340
PLUS-X PAN	160/5.5°	1/30	200	300	—	—
		1/60	200	280	—	210
PANATOMIC-X	40/3.5°	1/30	100	160	—	—
		1/60	100	140	—	130
KODACHROME DAYLIGHT	10	1/30	—	—	50	—
		1/60	—	—	45	40*
KODACHROME† TYPE A	16	1/30	50	80	—	—
		1/60	50	70	—	65
EKTACHROME DAYLIGHT	32	1/30	—	—	90	—
		1/60	—	—	80	55*
HIGH SPEED EKTACHROME	160	1/30	—	—	200	—
		1/60	—	—	180	130*
KODACOLOR	32	1/30	80	120	—	—
		1/60	80	110	—	90

THE FILM SPEEDS SHOWN ABOVE ARE THE LATEST ASA RATINGS

* Use PF24/97 blue flashbulbs.

† With Kodachrome Type A Film and clear flashbulbs, use a Wratten Filter No. 81C.

flashlight reflector, and so on. Therefore, if you find that your results are consistently over- or under-exposed, try varying the aperture a ½ stop either way from that which you calculate by the "Guide Number divided by the flash-to-subject distance" formula. By this means, you will arrive at the correct exposure for your picture.



KODAK PHOTO-HOBBY OUTFIT

The "just-right" outfit for the hobby-minded boy or girl — ideal for those "special gift" occasions. It is so easy to use, thanks to the simple step-by-step instruction chart, that it provides the ideal interest-packed hobby for youngsters — in fact, it could be the beginning of a successful career in photography. It is a complete outfit and contains everything needed for successful developing and printing at home: Kodacraft Roll-Film Tank (which eliminates the need for a

darkroom), printing frame and masks (2½ in. x 3½ in.), plastic measure, two film clips, thermometer, stirring rod, three rocker dishes, blotter book, sponge, safelight, two packets of Velox Sensitized paper, four packets of Kodak Universal M-Q Developer, and four packets Kodak Acid Fixer. Neatly packed in an attractive box that is sturdy and compact for storage.

PRICE: £5.10.0

KODAK PHOTO-PRINT OUTFIT

A compact complete "do-it-yourself" outfit for printing snapshots at home . . . ideal for the beginner who would like to get more out of his hobby than simply operating a camera. No special darkroom is needed, and prints can be made quite easily in a darkened room. A fully illustrated instruction book outlines each step of the process. The attractive plastic case of the outfit is specially designed so that it becomes

the actual set of processing dishes. In addition, the outfit contains the following items necessary for printing snapshots at home: 4-oz. plastic measure, printing frame and masks, stirring rod, thermometer, darkroom lamp (with battery and safelight), one packet of Velox Sensitized Paper, two packets Kodak Universal M-Q Developer, two packets Kodak Acid Fixer.

PRICE: £2.18.6

PROCESSING ACCESSORIES

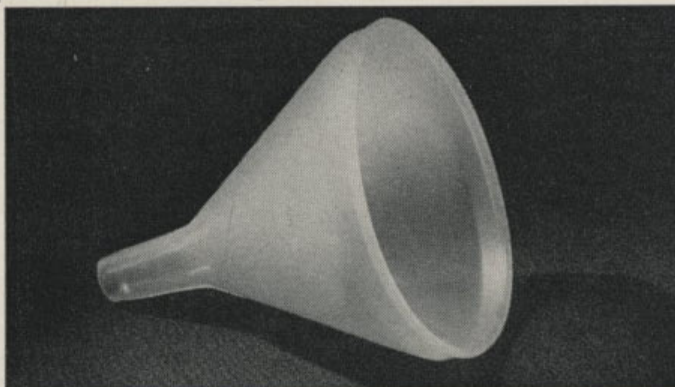
Alka Funnel (Type MW/81)

A handy time-and-trouble saver to add to your darkroom accessories . . . which means, no more spilt chemicals, no more frayed nerves when bottling solutions. It is all moulded in pliable plastic and available in various colours. The funnel mouth-piece is 3in. in diameter and terminates in a spout 1in. long by $\frac{1}{4}$ in. wide.

PRICE: 1.3.

PERFORMING THE 'DARKROOM MIRACLE' —

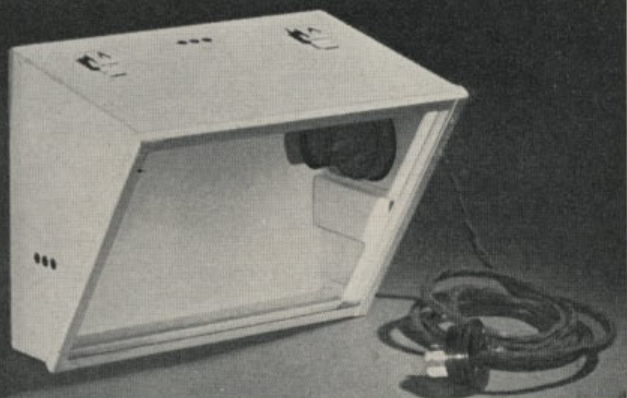
Today 'miracles' are few and far between but — there is still one miracle that is known to every practising amateur photographer. It's the supreme thrill (and one that never fails) he gets as he sees his picture "come up" in its developing bath. Make a list of the processing accessories you'll want, and soon you'll be enjoying the real satisfaction that comes from seeing your pictures "come up".



Austral Safelight Lamp

Correct darkroom illumination is vital to processing success — hence the Austral Safelight Lamp is a "must" for your darkroom. Designed mainly as a wall light, but provision has also been made for it to be hung from the ceiling or cupboards. Of all metal construction with spray finish, has light-proof ventilation to minimise overheating. Supplied with B.C. socket, flex, and 3-pin plug, but without safelight filter or globe. Made in two sizes to accommodate Wratten safelight filters.

PRICES: 5 x 7, £6.6.9; 8 x 10, £6.11.9.



Kodak Stirring Paddle (Close right)

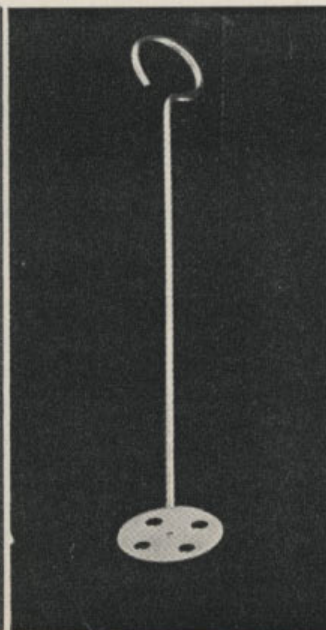
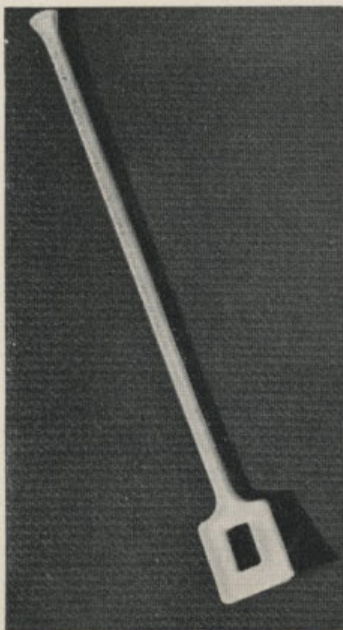
A handy 3-purpose processing aid — for crushing chemicals, stirring solutions, and agitating prints. Eliminates the necessity of touching solutions and prints with hands. Length, 10in. Moulded in strong plastic.

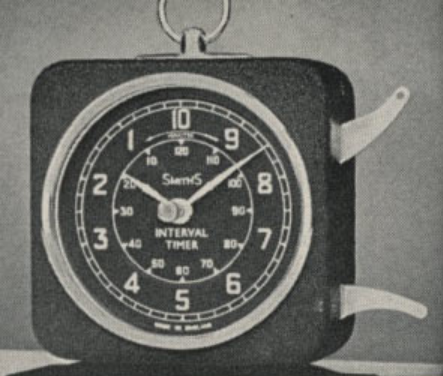
PRICE: 2.7.

Kodak Chemical Mixing Plunger (Far right)

The perforated plunger head mixes as it plunges, thus giving a more efficient mix than stirring. Length is 10in. Plunger head is 1 $\frac{1}{4}$ in. in diameter. In stainless steel buffed to a high polish.

PRICE: 3.1.



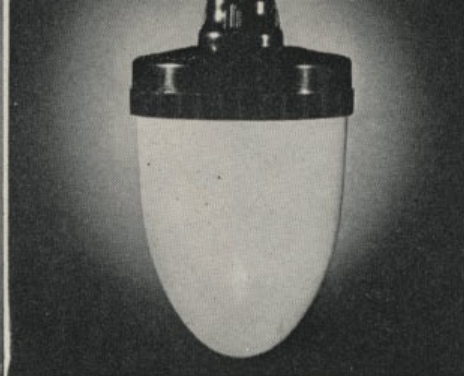


Smith's Interval Timer

Provides for accurate timing of processes from fractions of minutes up to two hours. The completion of selected periods is signalled by a loud alarm bell. **PRICE: £5.15.0.**

Graduates

A necessary aid in every darkroom for accurately measuring solutions. **PRICES: Plastic, 4 oz., 2.9; 20 oz., 6.6. Glass, 8 oz., 6.0.**

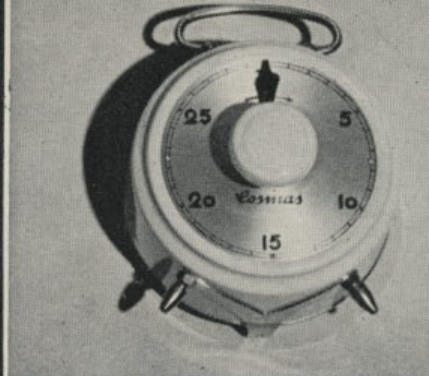


Brownie Safelight Lamp

Simply attaches to any household light fitting or reading lamp to give a perfectly safe safelight for processing Kodak papers. **PRICE: 15.6.**

Kodak Plastic Dishes

Ideal for enlargements. In two types — opaque and transparent. Impervious to acid solutions. 2½ in. deep with ridged bottom. **PRICES: 11 x 13, £3.3.0; 13 x 16, £3.14.6.**

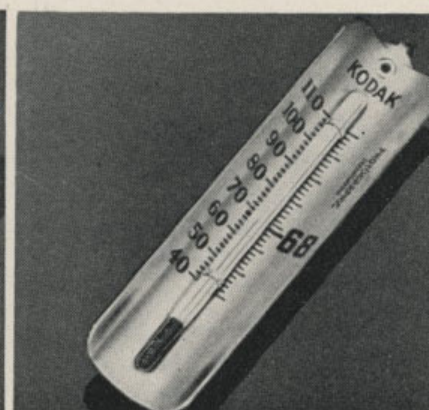


Cosmas Darkroom Timer

Three models — for timing up to 15, 30 and 60 minutes. Knurled knob winds clock mechanism and alarm. **PRICES: From £3.17.0.**

Kodak Thermometer

Degree readings, which range from 40-110 deg. F., are boldly marked and widely spaced. Metal casing is non-corrosive. **PRICE: 7.0.**



(A) Kodak Darkroom Pins

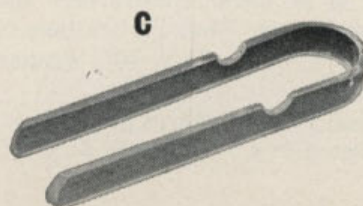
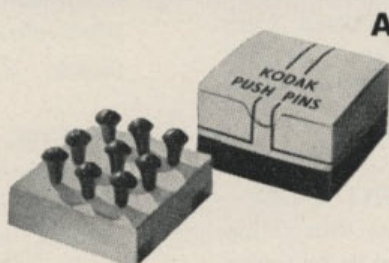
Each pin is 1 in. long with tempered point and plastic head. 12 pins per box. **PRICE: 2.9.**

(B) Kodak Junior Film Clip

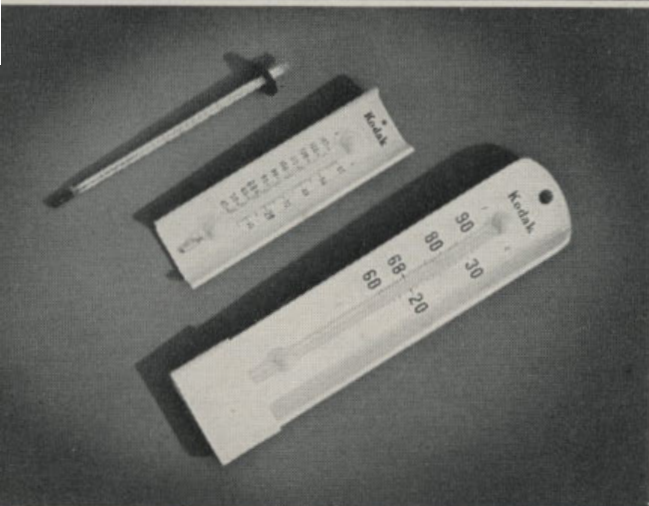
For safer and easier processing. Notch in top for quick, easy hanging on drying line. In stainless steel. **PRICE: 2.10.**

(C) Austral Print Forceps

Ideal for handling prints — no finger stains, no wet hands. Notched to rest on dish. **PRICE: 4.9.**



PROCESSING ACCESSORIES



🏠 Kodak F 140 Thermometer

Top: Provides absolute accuracy at 68° and within 1° at the extremities of the scale. Spirit filled, it is graduated from 30° to 140°F. Fitted with a rubber ring to prevent breakage, to provide for easier picking up and to prevent it sliding into dishes, etc.

PRICE: 17.0

Kodak Dish Thermometer

Centre: Mounted on a chemical resisting plastic and graduated from 40°-140°F. Has a special expansion chamber should the thermometer be immersed in a solution up to 170°F.

PRICE: £1.5.3

Kodak Tank Thermometer

Bottom: A heavy-duty thermometer for general tank use. Mounted on white plastic with large easy-to-read figures. Graduated from 60° to 90°F. Has expansion chamber and a special stainless steel device for hooking onto the tank.

PRICE: £2.8.0.

KODAK PYRAMID SAFELIGHT LAMP

Designed for overhead suspension, thus giving the maximum of light. Ventilated to minimise overheating, it is of metal construction and finished in white enamel. Made in two sizes to accommodate 5" x 7" or 8" x 10" Wratten Safelight Filters.

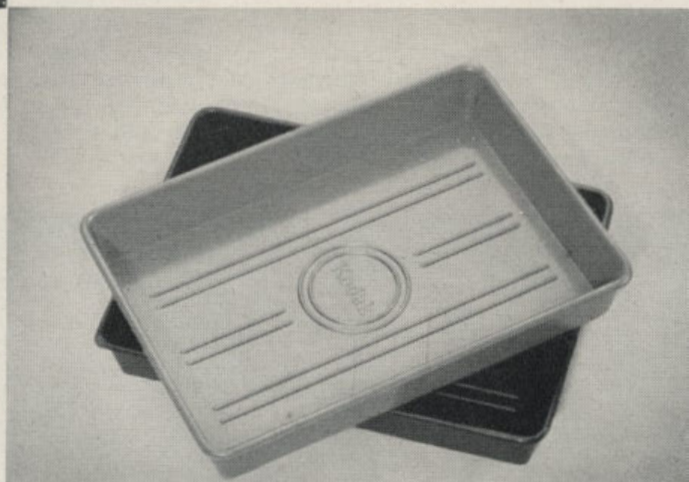
PRICES: Ventilated 5" x 7", £4.18.6; 8" x 10", £5.6.6; Unventilated 5" x 7", £3.10.9; 8" x 10" £4.1.9.

KODAK 28

👉 KODAK ROCKER DISHES

Designed to permit a convenient rocking action for easy agitation during processing. Made from strong plastic for durability and ease of cleaning. Ridged bottom makes it easier to pick up prints. Handy pouring lip permits quicker re-bottling of solutions. Trays have sloping sides so as to nest for easier storage. 5 x 7-inch size in three colours — red, black and grey; 9 x 11-inch in grey only.

PRICES: 5" x 7", 3.9; 9" x 11", 15.3



NUTEX GLOVES

Specially made to protect your hands and finger nails from chemical action. They are designed for durability and long life. Will not affect chemical solutions.

PRICE: 3.11

PLASTIC APRON

Prevents chemical stains from ruining your good clothes. Thoroughly water and chemical proofed to withstand years of darkroom work. 33" long.

PRICE: 16.4

FOTOX PRINT FORCEPS

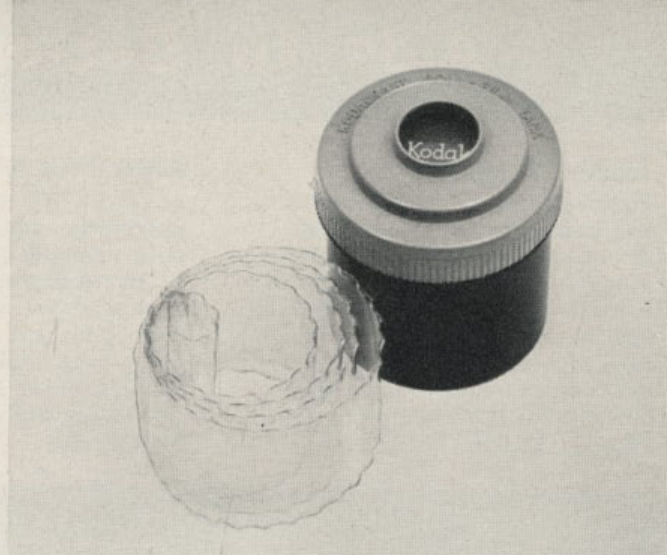
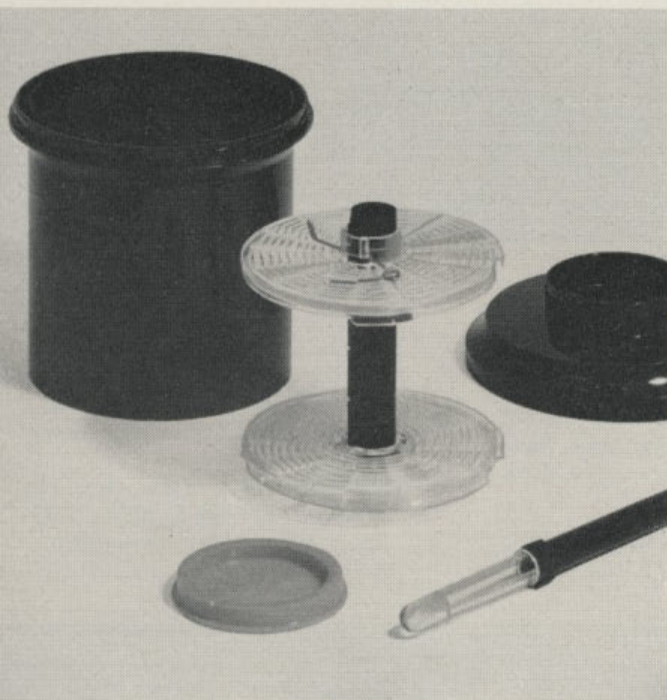
Cleaner and more economical. Here is one sure way to rid yourself of finger stain trouble.

PRICES: Standard 4.0, Spring loaded 6.9.

Kodacraft Roll-Film Tank with 620-120 apron

Provides the modern, easy way to develop 620 and 120 roll films at home. Each film is simply rolled up in the apron in just a few seconds and placed in the tank which holds 16 oz. of solution. All moulded in tough plastic. Both tank and apron are resistant to all normal photographic processing solutions.

PRICE: £1.15.0



Johnson Roto Developing Tanks

Roto — One

Has screw-in lid with removable polythene cap, permitting normal agitation of spiral film holder by means of a stirring rod as well as inversion to ensure thorough circulation of the developer. Spiral is adjustable to take 120, 620, 127, 828 roll films, or 20 exposure 35mm. films.

PRICE: £2.5.0.

Roto — Two

Larger version of the Roto-One with increased film capacity. Provision is made for agitation as well as rotary "camaction" movement of spiral by means of stirring rod. Features "Roto-Feed" loading and is adjustable to 116, 120, 620, 127, 828, 35mm. and 16mm. size films. Two 828 or 35mm. (20 exposure) films can be loaded at once without fear of overlapping during development.

PRICE: £2.12.6.

Kindermann 60 Developing Tank

This high-quality tank is particularly recommended for processing colour films as well as black and white. Both the tank and the reel are of approved high quality stainless steel and will accept films of 120 or 620 size. The reel is of the spiral wire type and is extremely easy to load. In colour processing the film need not be removed from the reel for the "flash" or second exposure. The use of stainless steel for colour work is now standard practice overseas, and the Kindermann tank strictly conforms to these standards.

PRICE: £8.14.3



Aids to Better Printing . . .

Johnson Printer

Provides the means to make sparkling contact prints without fuss or bother. Made from smart yellow plastic with black trimmings — when switched on the body of the printer acts as a safe-light. Complete with an assortment of Kodaloid masks, the printer plugs into 240V mains.

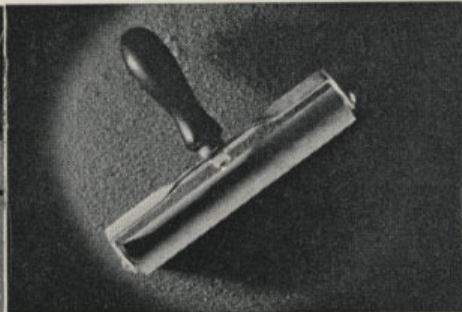
PRICE: £3.0.0.



Kodak Print Roller

A "must" for really successful squeegeeing and mounting of prints, particularly enlargements. Its high-quality rubber roller ensures a perfect even contact between print and mount. Has a strong metal frame and wooden handle to ensure long life. Available in 4in. size only.

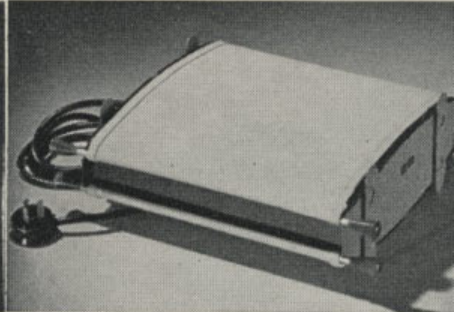
PRICE: 9.6.



Austral Amateur Glazer

Add to the attractiveness of your prints by giving them a mirror-like finish with this handy, efficient glazer. Will glaze prints as large as 8 x 10in. Of all-metal construction and complete with two large chromium plates, two strong white canvas aprons. Flex and plug extra.

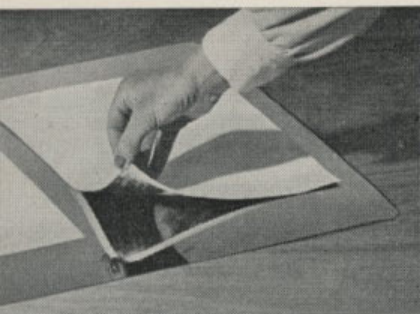
PRICE: £9.6.8.



Kodak Glazing Plates

Wet prints are simply placed face-down on the plates and firmly "ironed out" with a print roller or squeegee — when dry, they peel off as highly-glazed prints. Made of high-quality stainless steel.

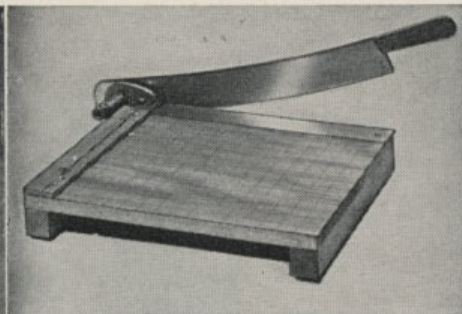
PRICES: 8 x 10in. £1.2.0; 14 x 20in., £3.0.0; 18 x 24in., £4.10.0.



Austral Print Trimmer

A sturdy, accurate all-purpose trimmer. The board is marked in 1in. squares, and is squared to a fine steel cutting edge. Special spring tension take-up holds blade in alignment and prevents it from falling when in use.

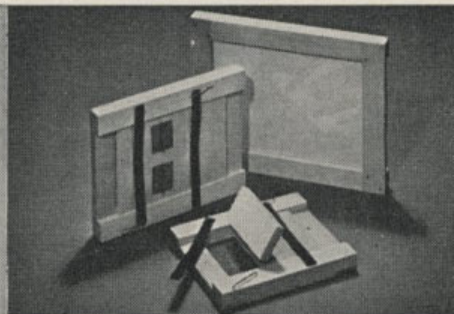
PRICES: 7in., £3.13.6; 12in., £9.2.9; 15in., £11.0.6.



Kodak Printing Frame

A "must" for efficient printing — it provides a firm contact between negative and printing paper. Made of strong white wood with cloth-covered hinged back, and strong metal clamps.

PRICES: 1½ x 2½in., 5.7; 2½ x 2½in., 6.9; 2½ x 3½in., 7.0; 2½ x 4½in., 8.3; 3½ x 5½in., 8.9.



PRICES:

Kodak Blotter Book	2	3
Kodak Heavy Type Roller — 4"	9	6
8"	18	6

Barton Print-Washing Tank £5 17 3

Kodaloid Printing Masks (Pkt. of 3) 3 0

Barton Print-Washing Hose Assembly (siphon) 2 16 0

ENLARGING ACCESSORIES

Barton Foot Switch

A. An all-metal spring-type foot switch for use with enlargers, printing boxes, inspection lights, and all other types of lighting and other equipment employed for intermittent periods. Its use enables the hands to be left free for other uses. Well designed and sturdily made.

PRICE: £7.11.0.

El-an-De Masking Board

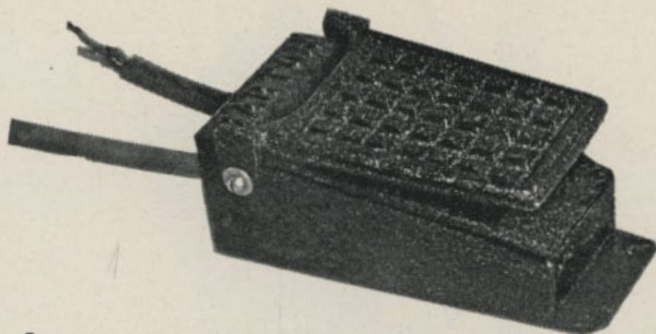
B. In a range of four sizes with heavy white enamelled base and all-metal black hinged frame. Adjustable light-gauge rules are easily moved or locked in any position by two large milled knobs. A movable bracket in the base permits margins of $\frac{1}{4}$, $\frac{1}{2}$ and $\frac{3}{4}$ in.

PRICES: $6\frac{1}{2} \times 8\frac{1}{2}$ in., £2.15.0; 8×10 in., £3.4.6; 10×12 in., £3.13.6; 12×15 in., £4.17.3.

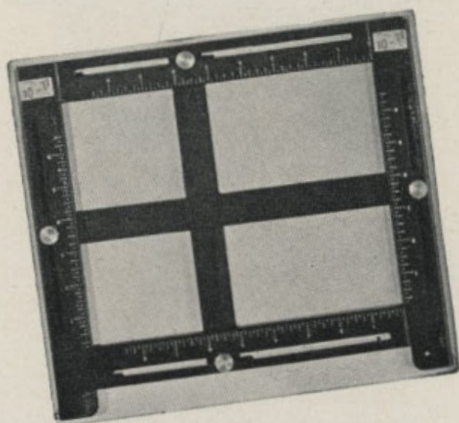
Kodak Projection Print Scale

C. A handy aid that can save both time and wasted sheets of "test" paper. The print scale is placed over the sensitized paper on the easel. With a negative in the enlarger an exposure of one minute is made in the usual way. After development, the correct exposure time may be read directly from the best appearing sector on the enlargement. This information is then used to determine exposures of other negatives of similar and varying densities.

PRICE: 15.0.



A



B



C

ENLARGING LENSES

PRICES:

Roussel Tylor — 85mm. f/6.3	£7.2.6
135mm. f/4.5	£11.0.3
135mm. f/6.3	£7.17.3

Condenser Lenses—sizes $2\frac{1}{2}$ " to $8\frac{1}{2}$ " diameter from £1.12.0.

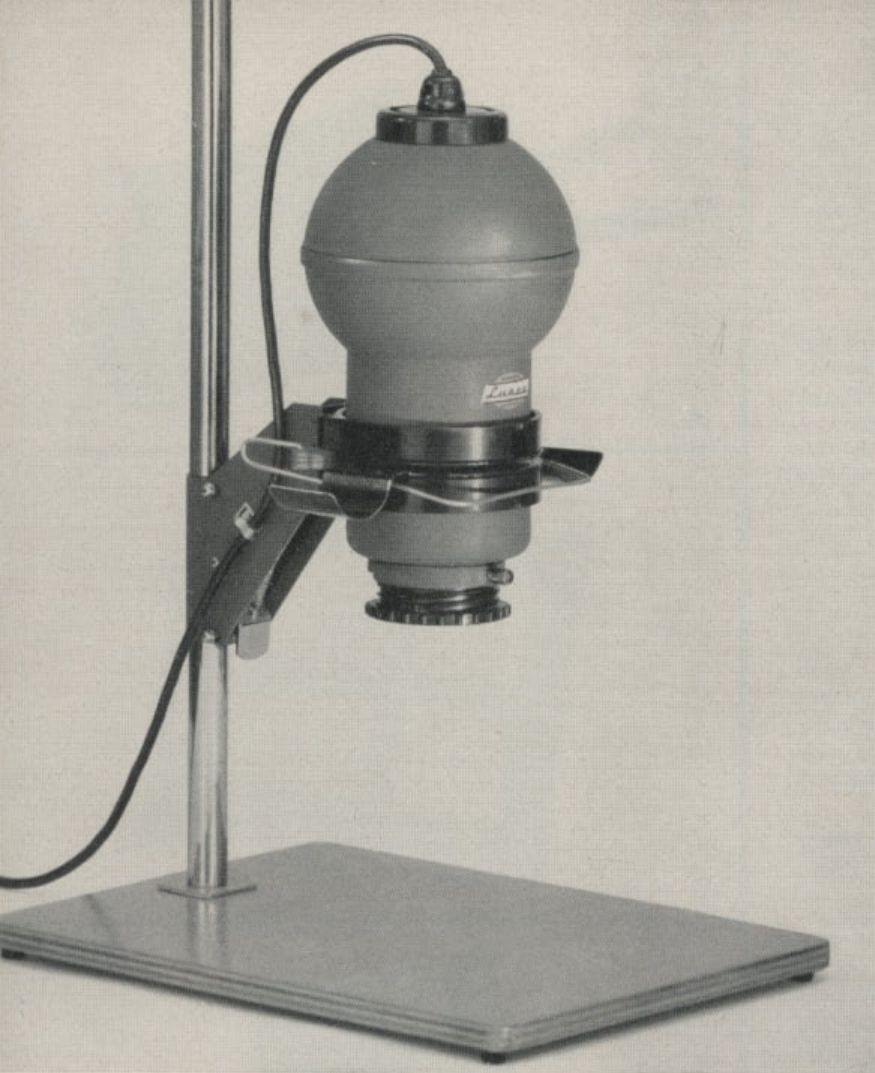
Condenser Lens Mount from 15.0.

Enlarger Plastic Dust Cover 16.1.

Som-Berthiot — 50mm. f/5.3	£12.16.9
75mm. f/4.5	£12.16.9
105mm. f/4.5	£12.0.0

Enlarger Lamps —

40 W	5.0	250 W	8.10
75 W	5.2	300 W	12.4
150 W	8.0		



Enjoy the thrill of
making your own
enlargements at home
with the popular

LUSCA ENLARGER

2¼in. x 3¼in.

Looking forward to making your own enlargements? . . . then you'll be best equipped with this modern, efficient Lusca enlarger. Smart in design, modest in cost, smooth in operation, reliable for a lifetime. Check these features . . . you'll really enjoy this new thrill in photography.

Accepts negatives up to 2¼ x 3¼in. May be used optionally with diffusion or condenser type of illumination. Supplied with a Som-Berthiot 105mm. (4 inch) f/4.5 lens, or is available to order without lens. Head assembly raised or lowered by quick release thumb-operated control plate. Chromium plated 26-inch steel support column. Well-ventilated lightweight lamphouse incorporates B.C. holder (to accept 75w or 100w opal enlarging lamp) and flashed opal diffusing disc. All-metal negative carrier with quality glass plates extension cups, and spring lever to open plates while advancing film.

Large knurled knob locks focusing mechanism. Fitted with removable lens panel (additional panels available separately including screw-threaded panels for Leica lenses). With 105mm. lens the maximum enlargement on the baseboard is 4.7 diameters, minimum is 1.5 diameters. Enlarger head rotates 180 degrees for projection to floor level. Laminated ¾in. baseboard with rubber pads on the underside. Weight 6 lb. Overall height with enlarger head fully raised, 40in. Total area of baseboard, 18in. x 14in. (When ordering, state

assembly required — Assembly A for 2¼ by 3¼in. negatives (with or without lens); Assembly B for 2¼ by 2¼in.; Assembly C for 24 by 36mm.

PRICES:

Lusca Enlarger:

Assembly A (with lens)	28	10	0
Assembly A (without lens)	16	10	0
Assembly B (without lens)	16	10	0
Assembly C (without lens)	16	10	0

Lusca Enlarger Accessories:

Glass for negative carrier	10	6	
Diffusion disc	8	6	
Metal focusing cone — 2"	1	11	9
3"	1	13	0
4"	1	15	0
Plastic focusing cone — 2"	1	0	9
4"	19	0	
Lens panel	10	6	
Kodaloid Masks	1	3	
Negative carrier for 135 film	2	6	3

KODAK

Precision Enlarger

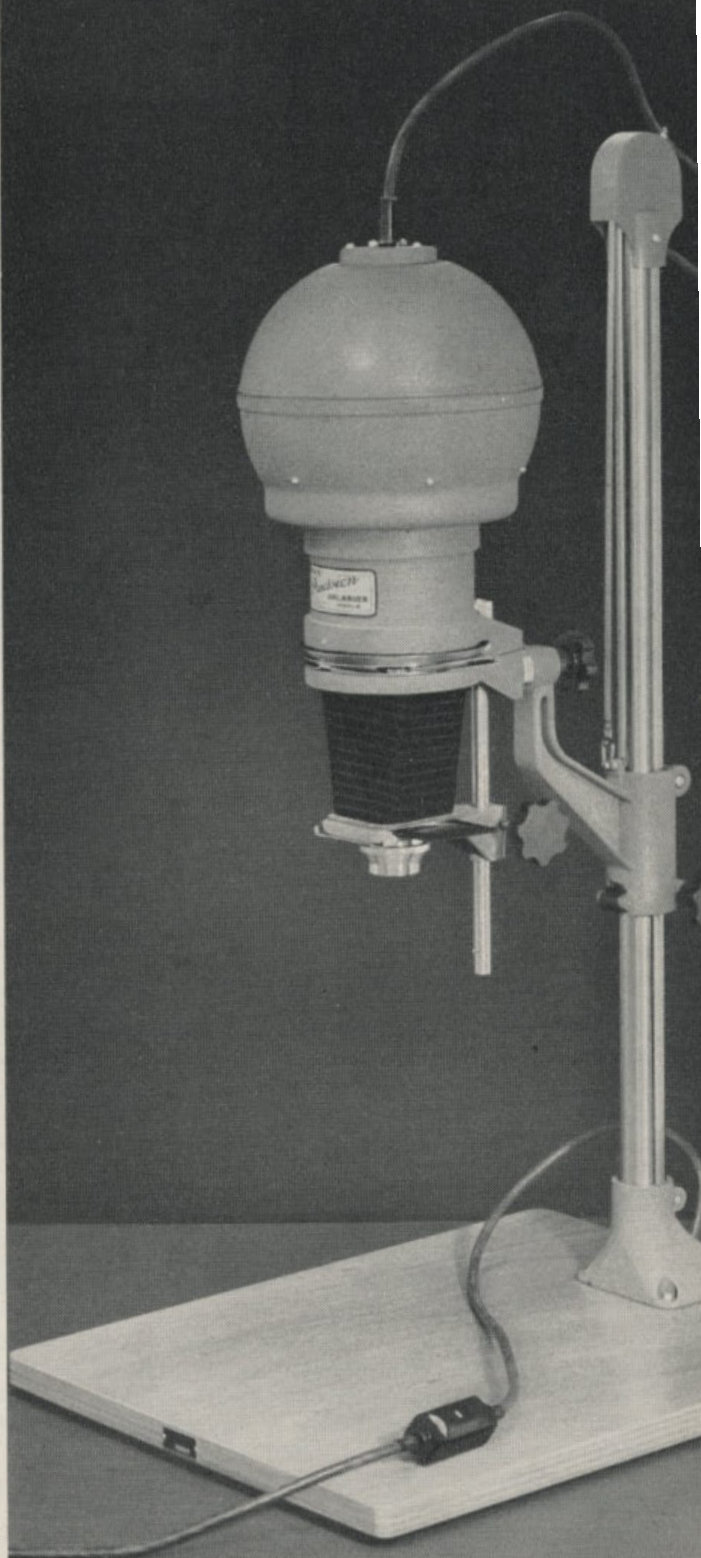
Together with its auxiliary equipment, the Kodak Precision Enlarger represents a carefully-planned programme of interchangeable components, designed and manufactured with precision to meet the most exacting demands.

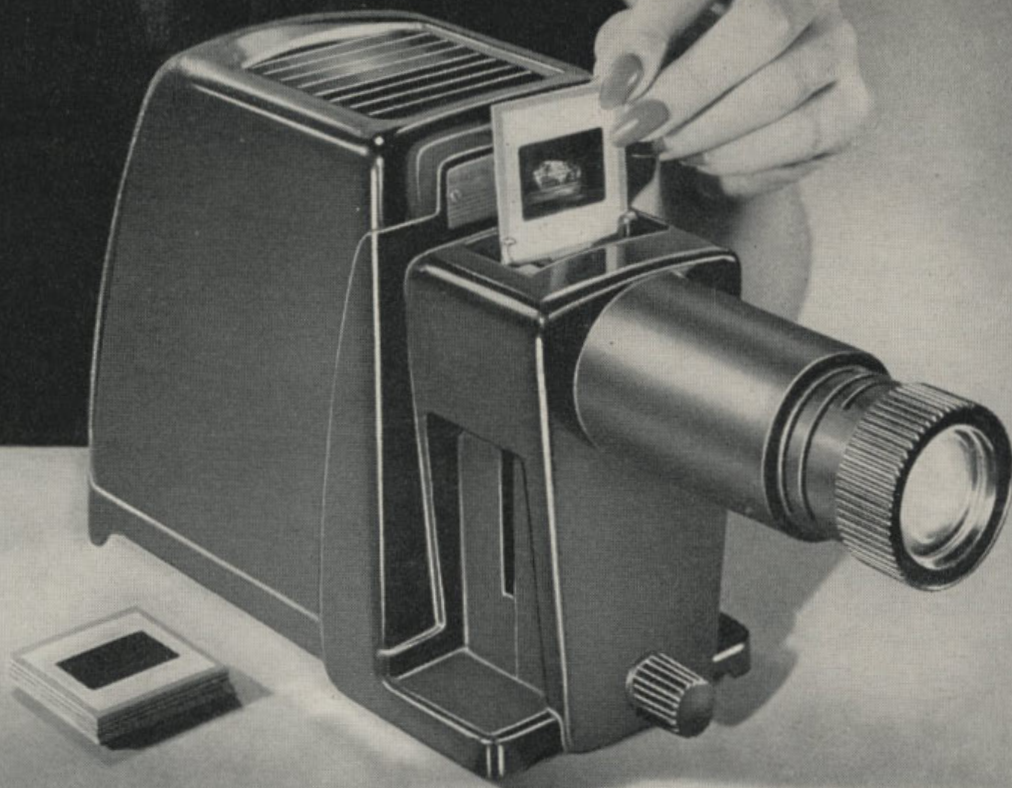
The basic equipment is a highly-efficient vertical enlarger for visual focusing, which will handle, with equal efficiency, roll film, cut film and plate negatives in all sizes from 35mm. up to 2½in. by 3½in. In the design of this equipment special attention has been paid to the needs of the colour worker, and the enlarger is recommended for the exacting work of preparing colour separation negatives from Kodachrome colour transparencies.

Its features include: Resin-bonded plywood baseboard measuring 22in. x 17½in.; 32in. tubular steel column of 1½in. diameter; will accommodate all negatives up to 2½in. x 3½in. in size; the condenser head incorporates two 4½in. diameter condenser lenses and a disc of heat-absorbing, heat-resisting glass; a friction-wheel drive system permits extremely accurate focusing; complete with 240/250-volt 150-watt lamp, safety filter, flex and plug, toggle ON-OFF switch, two roll-film support cups, and a negative carrier with a set of six interchangeable Kodaloid masks. Complete with Kodak Ektar 100mm. f/4.5 lens.

PRICE: £115.8.0

Available also is a wide range of special Precision Enlarger accessories. Prices on request.





KODAK MERIT PROJECTOR

Now you too can enjoy the thrill of owning your own projector and screening your own Kodachrome colour slides at home . . . at a budget price that you can afford. With performance and reliability you would expect to find only in more costly projectors — brilliant 250-watt screen images in all sizes up to six feet wide — the Merit is truly the ideal projector for the amateur colour slide enthusiast. Check these features:

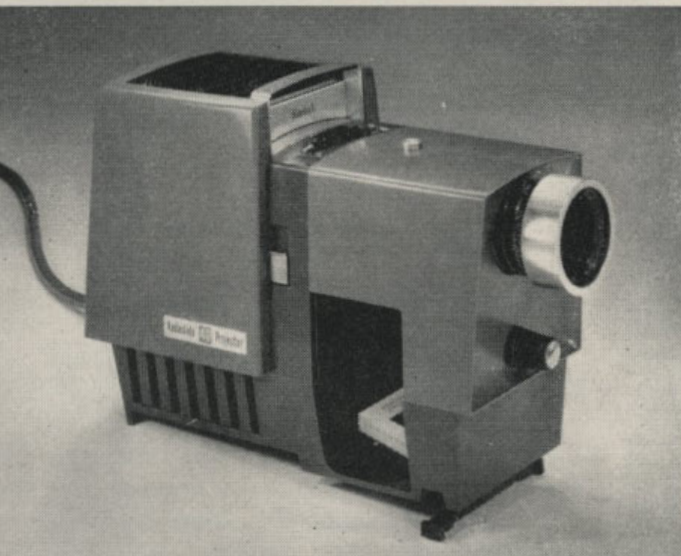
Fitted with a colour-corrected and coated 5-inch Kodak f/3.5 projection lens. The maximum light is transmitted through the aspheric condensing lens to ensure edge-to-edge screen brilliance, sharpness, and faithfulness of colour reproduction.

Convection-cooled — the large size ventilated lamp-house and built-in heat-resisting glass minimise heat and protect slides from damage. Cooled by air channelled through aluminium baffles, it may be operated safely for hour after hour. New easy-to-use slide feeding mechanism accepts slides from the top, thus minimising image movement on the screen. Smooth finger-tip elevation control permits the projector to be

locked at any position from horizontal to 10 deg. A spiral-grooved lens barrel rotates for easy, accurate focusing. Rubber-tipped legs prevent slipping or scratching of polished surfaces. Strong lightweight body of black moulded plastic is perfectly opaque and so minimises reflection. Weighs only 3½ lb. Operates direct from a 240V. power supply. Supplied with 9 ft. of flex and three-pin plug. Handsome lightweight carrying case available separately.

PRICES: Projector, £19.10.0
Case, £3.17.6

SLIDE PROJECTORS

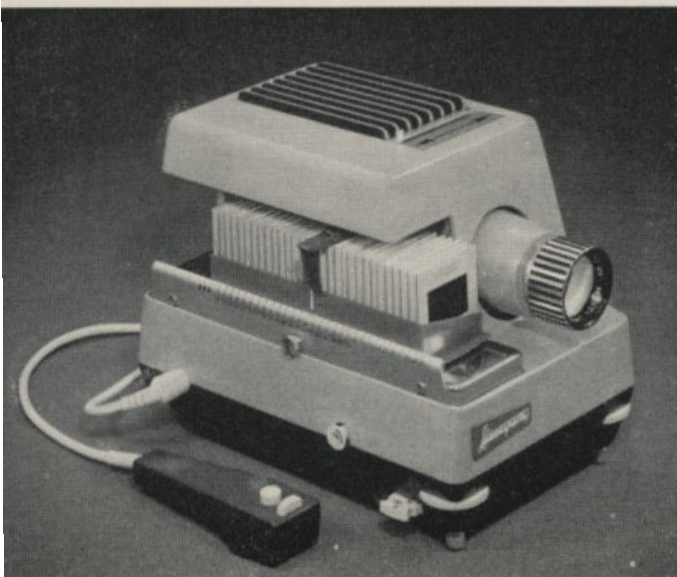


KODAMAT

Here is a slide projector of modern design with a truly outstanding performance. Fitted with a 100mm. Procolor $f/2.8$ lens and a coated aspherical condenser system, it is complete with heat absorbing filter and reflector. A pre-focused 500-watt projection lamp is supplied with each projector, while the built-in fan unit provides adequate cooling. It is of sturdy metal construction and finished in light, blue-grey ripple enamel.

The Kodamat Rapid Slide Changer has been specially designed to fit both the Kodamat and Kodaslide projector. It takes 38 card or glass mounts. At the touch of a finger, the slides are fed from the changer into the slide gate, dropping into a plastic hopper after projection.

PRICES: Kodamat Projector, £35.18.3.
Rapid Changer, £4.3.6.

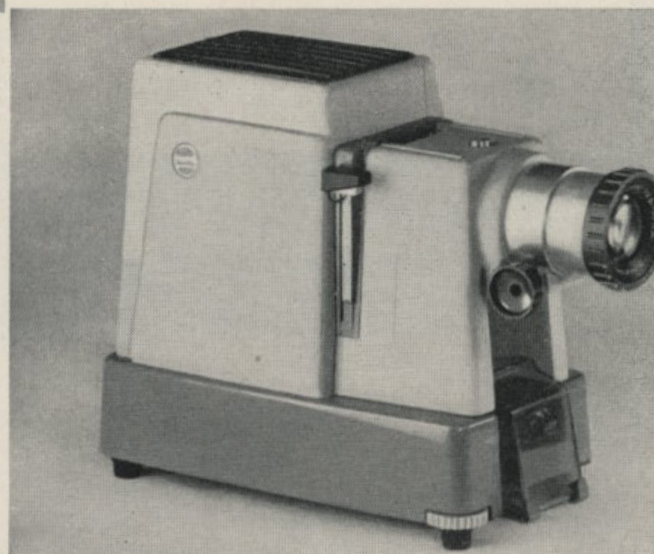


KODASLIDE 40

New in every way, the Kodaslide 40 has new modern styling, new brilliant performance, new budget price. It features a 4" Ektanon $f/3.5$ projection lens with finger-tip focusing, a "collection box" which gathers slides in their correct order after viewing, and a handy lever which removes the last slide of the showing.

A 150 watt projection lamp gives brilliant illumination with all 135 and 828 transparencies and 127 super-slides. Sturdily constructed and beautifully moulded in deep blue-green and grey, the Kodaslide 40 Projector will give hours of enjoyable viewing for both yourself and your friends. The Kodamat Rapid Slide Changer (see details below) will also fit this model.

PRICE (complete with lamp), £19.5.0.

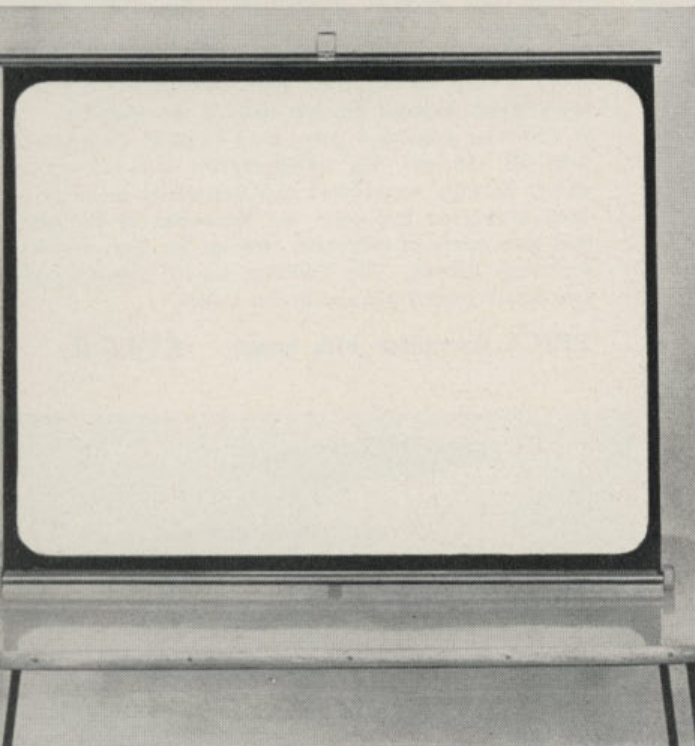


FANTAX VOLLAUTOMAT

Precision built in the famous factory of Liesegang, the Fantax-Vollautomat combines power, automatic operation and modern styling. A highly efficient optical system and a 500 watt lamp provide brilliant illumination, while a built-in blower ensures that both slides and lamp are kept at the correct temperature. Slides may be changed automatically at $7\frac{1}{2}$, 10, 15 or 30 second intervals, manually at the projector, or by remote control at the push of a button. Focusing can also be controlled by remote control. Of solid all metal construction, the Vollautomat is smartly finished in green enamel and supplied complete with remote control and a 30 slide magazine.

PRICE: £77.9.9

PROJECTION SCREENS



Regal Cadet:

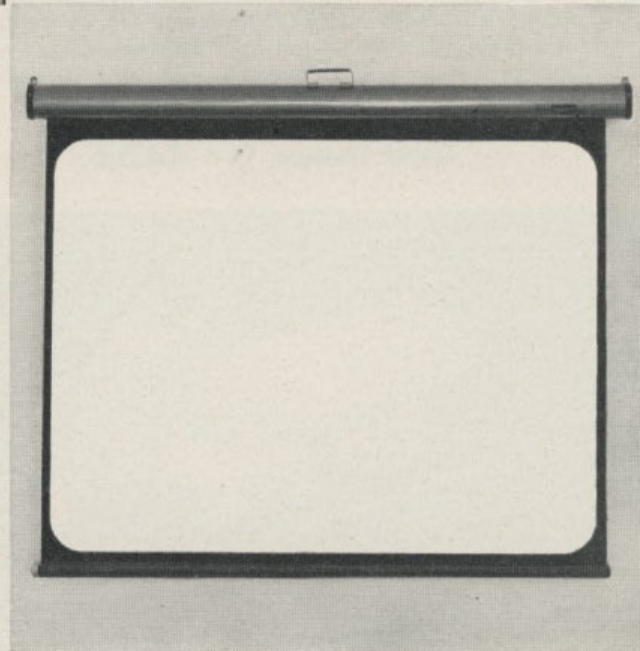
Provides an efficient, perfectly matte white screening surface. Its unique stand comprises a single-spring tension bar which fits into the top and bottom rollers to provide a firm, taut surface — an attached arm with a rubber vacuum cup keeps the screen perfectly erect. The complete screen rolls up to fit into a sturdy cardboard cylinder for protection during storage. Conveniently light in weight and compact for easy carrying.

PRICES: 30 x 40in., £6.6.0; 36 x 36 in., £5.15.6.

Regal Monarch:

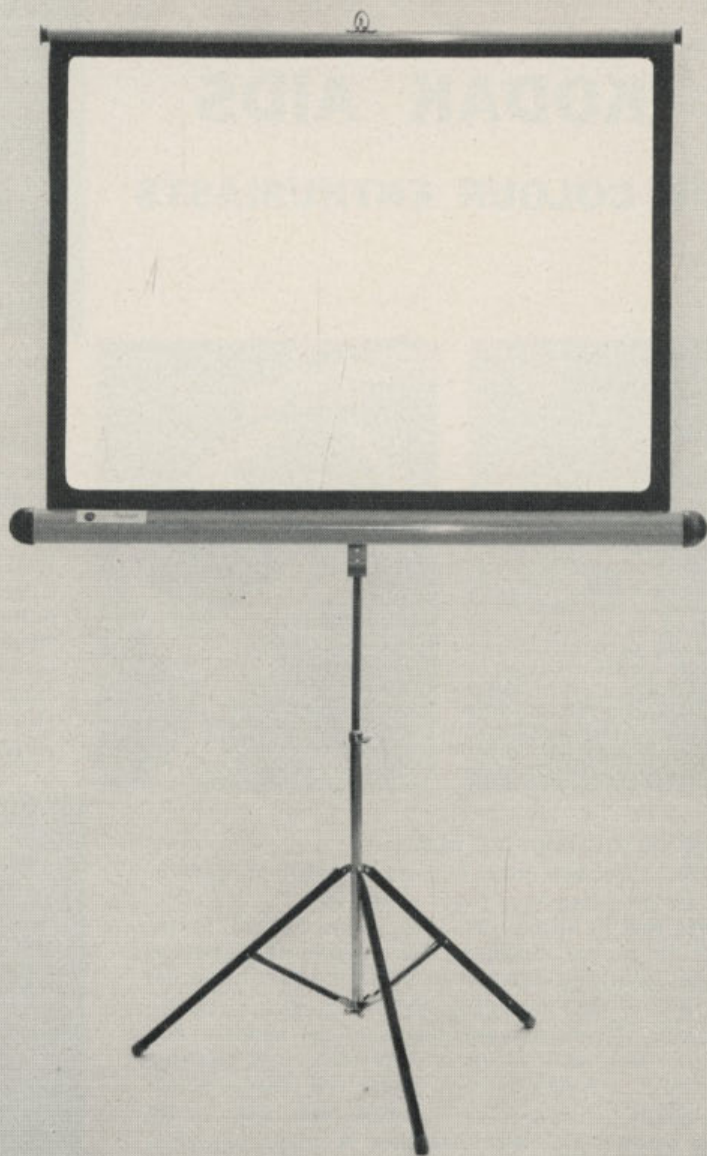
An all-purpose portable hanging-type screen ideal for use in the home, clubs, classrooms, etc. Can be hung anywhere in a jiffy . . . or permanently fixed to the wall by the attachments provided — then simply pull it down like a roller blind and you're ready for screening. After use it neatly rolls up into its smart metal tube which gives maximum protection against dust and knocks.

PRICES: Glass beaded, 30 x 40 in., £9.8.9; 30 x 52in., £12.10.9; 48 x 48in., £13.0.0; White matte, 39 x 52in., £9.5.6; 48 x 48in., £9.11.9.



HUNTER STARLIGHT SCREEN

The Starlight is a tripod screen and is therefore self-supporting, standing on its own legs making it completely independent and more versatile in use — no need to provide means for hanging or standing on a table. It is built as one complete unit — the streamlined protective tube for the screen is permanently fixed to the tripod base which folds up into a compact unit for handling or for storage; it has a carrying handle, it is very light, and so is ideal for transportation purposes. The high quality glass-beaded or matte white projection surface which is protected in the steel barrel, unrolls and is clipped to the extending arm ready for use. It can be raised or lowered at will on the adjustable column. Caps are fitted to the tripod legs to prevent them from scratching the floor. Available in 30 by 40in. size for standard horizontal screening of slides and movies; also as a 40 by 50in. size. The 48 by 48in. size accepts both upright and horizontal slides.

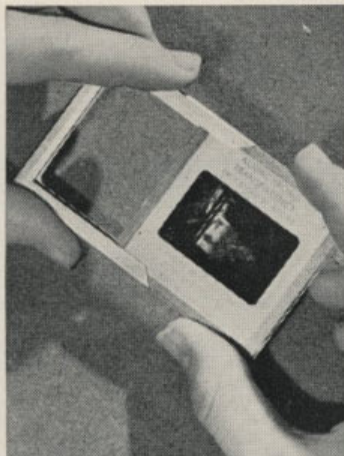


PRICES:

Glass Beaded:	No. 1, 30 x 40in.	£11 17 0
	No. 2, 40 x 50in.	£15 14 0
	No. 2A, 48 x 48in.	£17 2 0
Matte White:	No. 1, 30 x 40in.	£10 12 0
	No. 2, 40 x 50in.	£13 10 0
	No. 2A, 48 x 48in.	£14 10 0

KODAK AIDS

FOR COLOUR ENTHUSIASTS



KODAK READY MOUNTS

(Far left.) Ideal for replacing creased and "dog-eared" mounts. Easy to use — just place the transparency in position, moisten the pre-gummed surface, and fold the mount over. The result — a sturdy mount that will fit standard 2in. by 2in. projectors and viewers. In boxes of 50. **Price: 7.8.**

REGAL TRANSPARENCY MOUNTS

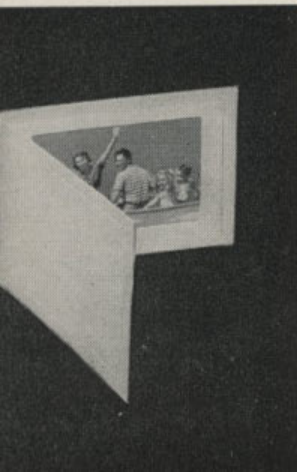
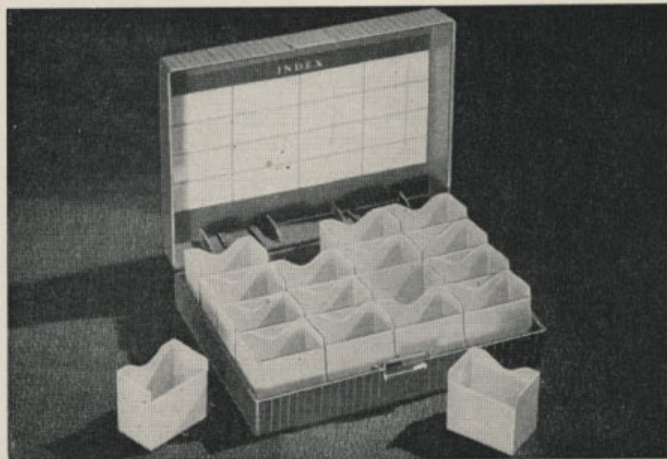
(Close left.) An economical, simple and permanent method of protecting your valuable Kodachrome transparencies. Each mount comprises two sheets of fine optical glass and a lightweight metal frame. To use: Simply insert the entire cardboard mount between the glasses and slide into the mount. In boxes of 20.

Price: 14.8.

KODASLIDE 400 FILE BOX

(Right.) The new trend in filing Kodachrome slides is by groups — and what better system than this ingenious outfit with its sixteen removable compartments? Excellent for use with automatic slide changers on projectors. Each compartment holds 20 to 25 cardboard mounts, or 400 in total (approximately 176 if glass or metal mounts). When you open the cover the compartments all tip back ready to lift out. The box itself moulded in tough attractive maroon plastic; the compartments in pliable yellow plastic. Complete with index in lid and strong metal catch. Supplied in strong protective carton for vertical storage in bookcase style.

Price: £1.15.0.



KODAK COLOUR PRINT MOUNT

(Far left.) An ideal way to feature much-treasured colour prints. Will readily stand up on your desk, as well as dress up a snapshot to be enclosed in a letter. Made of grained lightweight ivory board to accept one print, 2½ by 3½ or 3½ by 5in. **PRICE: 1.0**

PARKER COLOUR PRINT FRAME

(Close left.) Adds that "finishing touch" to Kodak colour prints when required as a gift or for home decoration. Of neat wood construction and finished in attractive ivory. Complete with slide-in back and two-way strut to accept 3½ by 5in Kodak colour prints.

Price: 7.10.



KODAK SLIDE KIT

For mounting your own slides. Gives your "special" slides longer life and greater protection against dust and scratches, etc. Slides can be mounted simply and quickly. Kit consists of 100 optical glass 2 x 2 inch slide covers, 50 Kodak 135 masks, 12½ yards of Kodak binding tape, 60 stickers for marking slides and a handy box that holds 37 of the completed slides.

Price: £1.5.0.

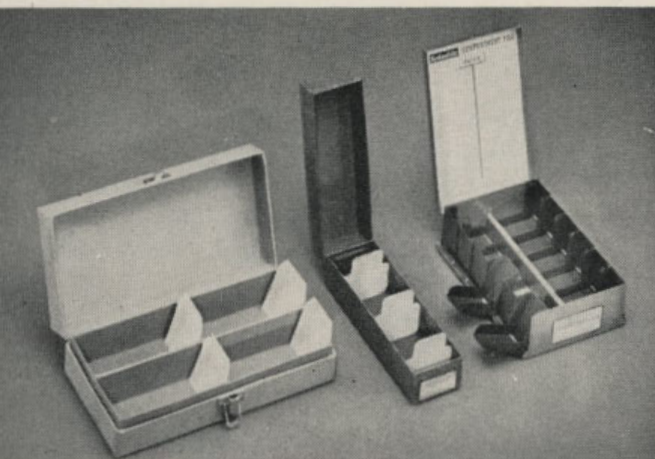
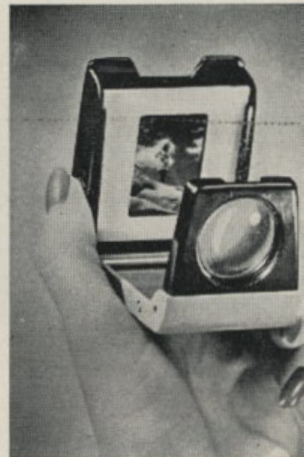
KODASLIDE POCKET VIEWER

(Far right.) Sturdy, compact viewer for 2 by 2in. slides — four times magnification. Has ground and polished optical glass lens. Size when folded — 2½in x 2½in. x ½in. Accepts cardboard, metal, and glass mounts. In sturdy plastic. **Price: £1.2.6.**

KODAK ILLUMINATED POCKET VIEWER

New colour-slide viewer folds compactly; has large "reading glass" lens for viewing with both eyes; four times magnification; powered by two Eveready 915 AA batteries (not included).

Price: £3.15.0.



KODASLIDE FLEXO FILE

(Left.) Gives low-cost storage for valuable Kodachrome slides. Holds up to 340 cardboard or 224 glass 2 x 2in. slides. In reinforced cardboard. **13.0.**

KODASLIDE FILE BOX

(Centre.) Robust all-metal construction keeps precious slides safe from knocks and dust. Accommodates up to 140 cardboard, or 55 glass slides. With five movable separators and press-spring catch. **£1.1.0.**

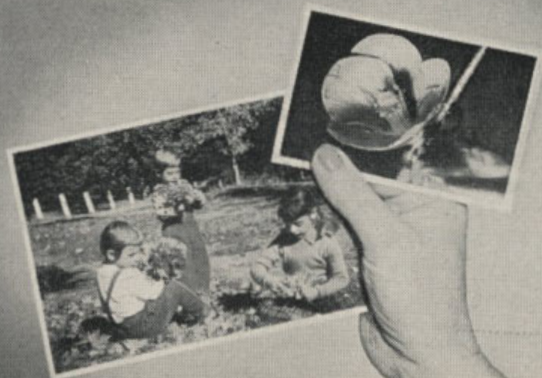
KODASLIDE COMPARTMENT FILE

(Right.) It features twelve handy swing-out compartments for convenient access to groups of slides. Each compartment holds 20 cardboard or eight glass (or metal) slides. In hammergeglow finish. **£1.15.0.**

KODAK COLOUR PRINTS

With Kodak Colour Prints the beauty of your favourite positive colour transparencies can be reproduced as rich, natural glossy prints. By having such prints made you can share the beauty of your colour transparencies with others as well as enjoy them displayed in your own home. They can be made from any 24 by 36mm. (Retina size) or 28 by 40mm. (Bantam size) positive colour transparency. Available in two sizes — 3½ by 5in. or 5 by 7½in. (including ½in. white border) — both are ideal for framing or as gifts to relatives and friends. Kodak Colour Prints can be ordered singly or in any quantity from the one original transparency.

Prices: 3½ x 5in.. 8.6; 5 x 7½in. 18.6.





Kodachrome View Transparencies

★ *Australian Scenic Interest*

★ *Historical and Topical Events*

★ *Miscellaneous Views*

Kodachrome View Transparencies are full-colour 35mm. natural colour slides mounted in 2 by 2in. cardboard mounts ready for projection. Nearly 500 different titles (listed in a separate catalogue) are available under the following subject groups:

PRICE: 4.6 each

SYDNEY
MELBOURNE
BRISBANE
ADELAIDE
PERTH
CANBERRA
PICTURESQUE TASMANIA
BALLARAT/GEELONG
SNOWY MOUNTAINS SCHEME
BLUE MOUNTAINS—JENOLAN CAVES
SOUTH COAST, N.S.W.
NEWCASTLE
POPULAR SYDNEY BEACHES

SOUTHERN QUEENSLAND BEACHES
VICTORIAN BEACHES
THE GREAT BARRIER REEF
CENTRAL AND NORTHERN AUSTRALIA
AUSTRALIAN SURF LIFE-SAVING CARNIVAL
TOWNSVILLE
CAIRNS
THE AUSTRALIAN SCENE
AUSTRALIAN FLORA AND FAUNA
AUSTRALIAN ABORIGINES
NEW ZEALAND
ATLASES
MISCELLANEOUS

See the World from Your Own Armchair . . .

VIEW-MASTER®

Stereo Viewers & Stereo Reels

Seeing pictures in true three-dimension colour is an unforgettable experience. With View-Master Stereo Viewers and Reels a whole new world of beauty and adventure comes to life before your eyes. A flick of the finger changes the scene; accurately ground and polished lenses keep the image clear and sharp. You can build your own library of View-Master stereo reels from the comprehensive list below. Each reel contains seven delightful stereo scenes that are both entertaining and educational for young and old.

PRICE: Viewer, £1.15.0
Reels, 5.0 ea.

Egypt:

Cairo and the Pyramids (3300A)
Land of the Nile (3300B)
Victoria Falls, Sth. Rhodesia (3100)

India:

Taj Mahal, Agra (4300)

Japan:

Mount Fuji and Rural Scenes, Japan (4872)

Middle East:

Jerusalem — "The Holy City,"

England:

London I (1001)
Changing the Guard at Buckingham Palace, London (1007)
Windsor Castle, Royal Residence (1013)
Shakespeare's Stratford-on-Avon (1025)

France:

Paris I (1401)

Holland:

Tulip Time (1920A)

Italy:

Rome I (1601)
Venice (1630)

Norway:

The Fjords (2075)

Scotland:

Robert Burns' Country (1200)
Highland Scenes (1210)
Edinburgh (1220)

Switzerland:

The Matterhorn and Zermatt (2001)
Interlaken Region (2009)

Wales:

Wales I (1150)

Canada:

Banff, Canadian Rockies (318)
Lake Louise, Canadian Rockies (319)
Niagara Falls, Ontario, Canada (A6552)

U.S.A.:

Niagara Falls (A6551)
Washington, D.C., 1 (136A)
New York City I (156)
New York City II (157)
San Francisco, Cal. (198A)
Grand Canyon, South Rim, Arizona (26X)
Grand Canyon, North Rim, and Mule trips, Arizona (36X)

New Zealand:

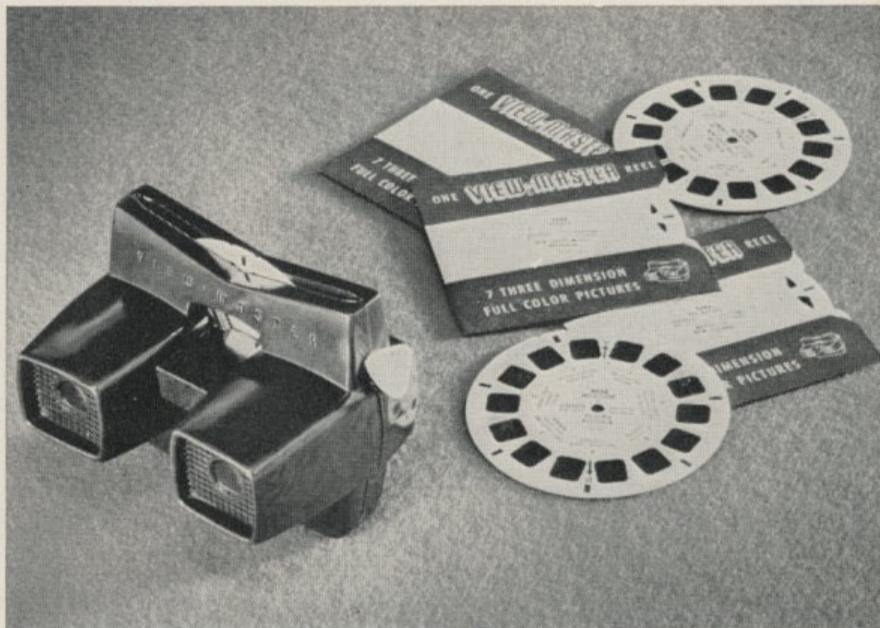
The Maoris, Natives of N.Z. (5261)
Rotorua, North Island (5270)
The Southern Alps, South Island (5301)

Australia:

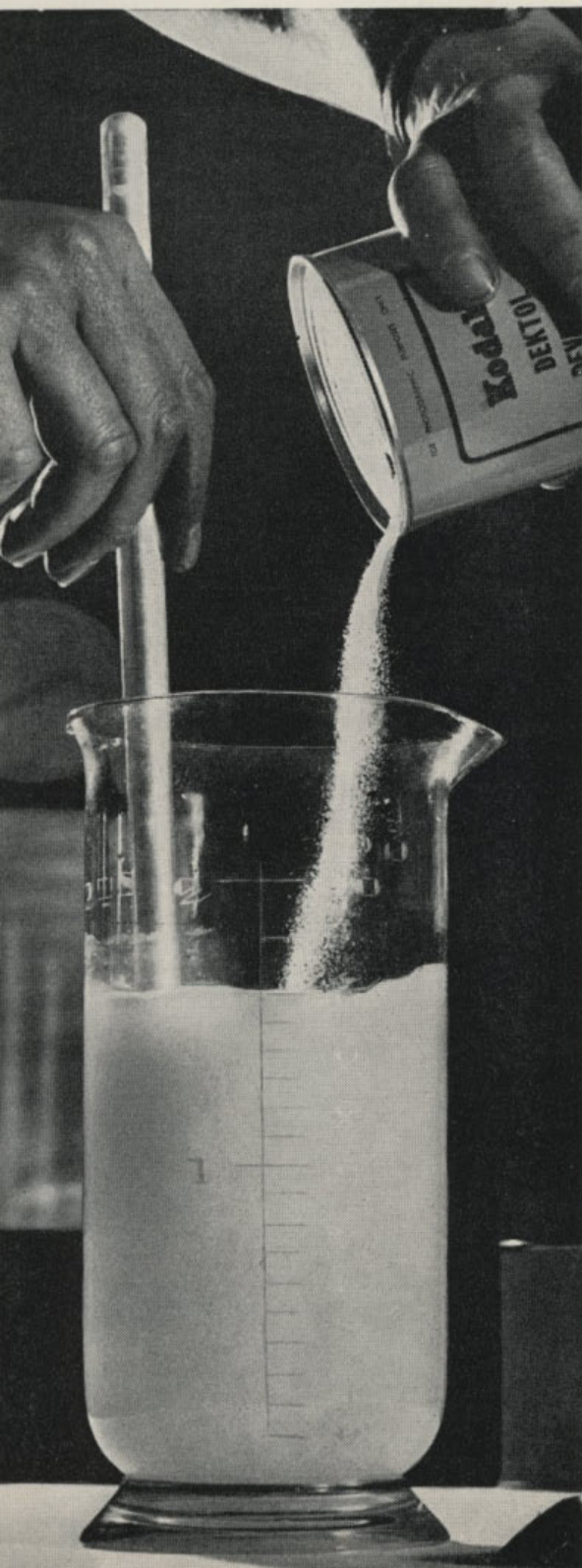
Sydney I, N.S.W. (5001)
Sydney II, N.S.W. (5002)
Sydney, The Beaches, N.S.W. (5005)
The Blue Mountains, N.S.W. (5008)
The Great Barrier Reef, Q'ld. (5010)
Kangaroo Hunt with Aborigines of Australia (5020)
Canberra, Capital of Australia (5025)
Melbourne I, Vic. (5041)
Melbourne II, Vic. (5042)
Adelaide and vicinity (5121)
Alice Springs, N.T. (5161)
Perth, Western Aust. (5201)
Tasmania I (5241)
Tasmania II (5242)
Jenolan Caves I, N.S.W. (5030)

Fairy Stories and Cartoons:

Little Red Riding Hood (FT1)
Hansel and Gretel (FT2)
Jack and the Beanstalk (FT3)
Cinderella and the Glass Slipper (FT5)
Goldilocks and Three Bears (FT6)
"The Three Little Pigs" (B3071)
Donald Duck in "Sky Hammock" (842A)
Chip and Dale in "Flying Saucer Pilots" (842B)
Hopalong Cassidy (William Boyd) in "The Cattle Rustler" (956)



KODAK CHEMICAL PREPARATIONS



... are accurately and scientifically compounded to produce the best possible results when used in conjunction with Kodak Film, Plates, and Papers. Most preparations are single powders sealed in airtight moisture-proof containers — once the can is punched the powder pours freely and dissolves easily. Kodak Chemical Preparations are machine-mixed to ensure that every can maintains its efficiency and consistency year in, year out.

KODAK PREPARED DEVELOPERS FOR FILMS AND PLATES

Kodak Developer D-19—Ideal for the needs of the technical photographer. It is a rapid, long-life, clean-working developer designed to give negatives of high contrast in 4 to 5 minutes.

Prices: $\frac{1}{2}$ gal. 6.0; 1 gal. 10.3.

Kodak Developer DK-50—A favourite with both amateur and professional workers, it is recommended for processing sheet films and plates in trays or open tanks.

Prices: $\frac{1}{2}$ gal. 3.9; 1 gal. 5.9; 5 gals. 18.9.

Kodak Developer DK60a—For general use in developing roll films, sheet films and plates. It holds well the original emulsion speed and produces high quality results in 5 to 7 minutes development.

Prices: $\frac{1}{2}$ gal. 5.3; 1 gal. 9.0.

Kodak Developer D-72—Is an all-purpose rapid elon-hydroquinone developer suitable for use with all papers, films and plates.

Prices: 20 oz. 3.0; $\frac{1}{2}$ gal. 6.9; 1 gal. 12.0.

Kodak Developer D-76—An excellent developer for all types of roll-film — it gives finest grain with the maximum emulsion speed for normal contrast; and the maximum shadow detail in fine grain films.

Prices: 20 oz. 3.0; $\frac{1}{2}$ gal. 6.0; 1 gal. 10.6.

Kodak Microdol Developer—A microscopically fine-grain developer, ideal for films necessitating extreme enlargement. It works quite fast, forms no scum, holds sludge to a minimum and gives uniform performance.

Prices: 20 oz. 3.0; $\frac{1}{2}$ gal. 6.9; 1 gal. 12.0.

Kodak Tropical Developer — Allows the efficient processing of films to be carried out at temperatures up to 101 deg. F. It keeps well and has a good capacity when stored at 75 deg. F. or lower.

Price: $\frac{1}{2}$ gal. 6.9.

KODAK PREPARED DEVELOPERS FOR PAPERS; ALSO

TRAY DEVELOPMENT OF NEGATIVE MATERIALS

Kodak Universal M-Q Developer—Conveniently packed for that quick job of developing or printing just a few films. Makes 12 ozs. of solution for tray development.

Prices: 12 oz. pkts. 0.9; carton of 24 pkts. 18.0.

Kodak Versatol Developer—Highly successful concentrated liquid developer for universal use with films, plates and papers. Versatol is convenient, clean and economical to use.

Price: 8 oz. 6.3.

Kodak Dektol Developer—Ideal for large-scale development of all types of contact and enlarging papers; also suitable for negative materials. Dektol has a high print capacity, keeps well and minimises sludge.

Prices: 20 oz. 3.0; $\frac{1}{2}$ gal. 6.9; 1 gal. 12.0.

Kodak Liquid Developer—A concentrated all-purpose developing solution.

Price: 8 oz. 3.0.

Kodak Bromesko Developer—For use with Bromesko Paper — yields rich warm-black tones by direct development and gives maximum warmth of image.

Prices: $\frac{1}{2}$ gal. 6.0.

KODAK PREPARED HARDENERS AND FIXERS

Kodak Acid Fixer (with Hardener)—An improved, long-lasting, high-capacity fixer which includes the hardener in the one powder. When dissolved in water makes a first-class fixer for use with films, plates, bromide and contact printing papers.

Prices: 8 oz. pkt. 1.0; 20 oz. 3.0; $\frac{1}{2}$ gal. 7.3; 1 gal. 12.9.

Kodak Acid Fixer (Non-Hardening)—Specially recommended for use with papers. Not designed for use with films (which require a hardening-type fixer).

Prices: 20 oz. 2.3; $\frac{1}{2}$ gal. 5.3; 1 gal. 9.9.

Hypo—An all-purpose fixing chemical for preparing non-hardening and hardening fixing solutions.

Prices: 1 lb. 2.3; 7 lb. 15.0.

Kodak Liquid Hardener—When added to 25% hypo solution to make acid-hardening fixing baths it provides the necessary acidity and hardening qualities.

Price: 8 oz. 3.0.

Kodak Tropical Hardener—A chrome alum bath recommended as a rinse between development and fixation during hot-weather processing of films and plates. Should be used in conjunction with Kodak Tropical Developer and Kodak Acid Fixer.

Price: $\frac{1}{2}$ gal. 3.6.

KODAK SPECIAL PROCESSING AIDS

Kodak Anti-Fog—Added to a film or paper developer it helps to suppress fog and increase contrast in materials which tend to fog from age. Of great value in high-temperature processing.

Price: to make 40 oz. 2.3.

Kodak Anti-Calcium—Prevents or minimises the formation of precipitates resulting from the presence of calcium in most tap water.

Price: 4 oz. 3.0.

Kodak Chromium Intensifier—An efficient preparation for intensifying weak, flat negatives.

Price: set of 2 tubes 3.9.

Kodak Dead Black—A thoroughly black solution for painting metal parts, both inside and outside, of cameras. Suitable for general use.

Prices: 2 oz. 3.0; 10 oz. 9.0; 20 oz. 15.0.

Kodak Glazing Solution—For preparing glass and ferro-type plates for giving a brilliant surface to glossy papers. Prevents prints from sticking to glazing plates.

Prices: 4 oz. 2.9; 20 oz. 10.6.

Kodak Hypo Clearing Agent—Excellent wherever a shortage of water exists — saves both water and washing time. Effectively removes hypo with only five minutes washing for films, and ten minutes for papers. In easy-dissolving powder form to make one or five gallons.

Prices: 1 gal. 3.0; 5 gals. 11.3.

Kodak Indicator Stop Bath—A concentrated powder stop bath which, when diluted with water for use, signals that it has reached the point of exhaustion by turning purplish-blue (dark under safe-light illumination).

Prices: 8 oz. 0.9; 20 oz. 2.3; 1 gal. 6.9.

Kodak Lens Cleaner—Keeps lenses clean; prevents growth of fungus.

Prices: 1 oz. 2.0; 4 oz. 3.6.

Kodak Opaque—A quick-drying, perfectly opaque liquid medium for spotting or blocking out negatives or lantern slides.

Prices: $\frac{1}{2}$ oz. tube 3.0; 2 oz. tube 7.6.

Kodak Photo-Flo—Prevents water marks and streaks by decreasing the surface tension of water so that it runs off evenly from film surfaces.

Price: 4 oz. 2.9.

Kodak Odourless Sepia Toner—Gives pleasant and permanent sepia tones, is rapid in action and extremely simple to use. It is a bleach and re-develop process.

Price: two 3 oz. bottles 4.3.



PHOTOGRAPHIC BOOKS . . .

to help you learn more about the fascinating hobby of photography. Here are just a few selections from the wide range:

How To Make Good Pictures (Kodak Ltd.)

Tells everything about amateur picture making from pressing the button to mounting the finished print. It is clearly and simply written and profusely illustrated with first class pictures and diagrams. A "must" for every photographer's library.

PRICE: 11.6.

Lighting For Photography (W. Nurnburg)

Tells of the technical roots of artificial lighting, reveals the advantages and limitations of different light sources, sketches the principles of their practical use, and gives countless suggestions as to their individual application.

PRICE: £1.11.6.

All The Photo Tricks (E. Smith)

Gives invaluable hints on how you can get startling pictorial effects, fantastic variation of reality and amusing deceptions of the human eye, through trick photography.

PRICE: £1.6.3.

All In One Camera Book (W. D. Emanuel)

Puts the whole of photography in a nutshell. Covers lens, filters, colour films and dozens of other features that will set you on the path to good photography.

PRICE: 15.9.

My Way With The Miniature (L. Vining)

Advises the 35mm. enthusiast all about: focusing, exposure, filters, choice of equipment, processing methods, plus many other interesting and important subjects.

PRICE: £1.11.6.

Making An Enlarger (Hugo van Wadenoyen)

Gives efficient designs for eight enlargers, with numerous adaptations and refinements, based on materials available and suitable for easy construction.

PRICE: 6.9.

Developing (C. I. Jacobson)

Contains two hundred formulae and tables, with genuine advice on their practical use and basic data of their theoretical background.

PRICE: £1.9.3.

Kodak Colour Handbook

The complete "book" of colour photography — covers every aspect from explaining the colour spectrum, exposure, processing to making colour prints. Contains a wealth of knowledge to suit the most advanced colour photographers.

PRICE: 2.18.0.

Let's Take Kodacolor Pictures

All the "Do's and Don'ts" for taking Kodacolor pictures. Explains how Kodacolor works and how to use it. Illustrated in full colour, it tells in non-technical terms how to take colour pictures with your camera.

PRICE: 5.9d.

Retina Guide

A "must" for all owners of Kodak Retina 35mm. Cameras. Lets you get that little extra from your camera. Tells special techniques, how to use lenses, filters and films for the best results.

PRICE: 14.3.

Kodak Flash Technique (Eastman Kodak Co.)

Flash photography is fun. This book explains how to get the most from your camera with flash. Explains fill-in flash, and has complete tables to show what apertures and shutter speeds to use, what filters to use, etc.

PRICE: 4.0.

Complete Art of Printing and Enlarging

Contains all the information needed to make good prints and enlargements. Results are analysed from both artistic and technical viewpoints, and step-by-step instructions are given on how to make good pictures even better.

PRICE: £1.11.6.

How to Make Good Home Movies

Explains just how easy home movie-making really is. Lists in detail exposures, types of lenses to be used to obtain special effects, how to make titles and how to make indoor movies.

PRICE: 12.0d.

Enlarging (C. I. Jacobson)

Helps professionals and amateurs alike to judge negatives and to choose apparatus, paper and chemicals all of which are essential for successful enlarging.

PRICE: £1.11.6.

Exposure (W. F. Berg)

Helps you to pick the right tools and materials, suit your filters to your film and your subject, and how to determine the correct exposure.

PRICE: £1.11.6.

Focal Photo Guides

This "All About" series is illustrated with the world's best photographs and written by the world's best photographic authors. Some of the 76 books in the series are: All About Filters, Exposure, Composition, Processing, Colouring, Photographing Animals, People, Selling Photographs, Sports and Games, Pictures in Town, Children Outdoors, Cameras, Cats and Kittens, Dogs and Puppies, Mother and Child, Lighting for Glamour, Flash, Night Photography, Contact Prints, Taking Baby, Taking Weddings, Print Finishing, Taking Colour, Building Your Own Enlarger, Making Camera Gadgets, Processing 35mm. Film, Taking Parties, Travelling with your Camera, Photographing Shows, Great Occasions, etc.

PRICE: 3.9d.

Simple Art of Making Films	1	17	6d.
Adventures in Indoor Colour Slides		6	3d.
This Is Photography (Lorelle)	1	11	6d.
Clicking with Colour		4	6d.
Colour Book of Photography	1	3	3d.
Colour Photography Outdoors		9	3d.
Retinette Guide		11	3d.
How to Process (L. Wheeler)		11	3d.
How to Take Snapshots by Flash		4	6d.
How to Write Commentaries (Focal Guide)		11	3d.
Kodachrome and Ektachrome from all Angles (F. Bond)	4	16	6d.
Kodak Colour Correction Filters Data Book	1	3	9d.
Kodak Colour Films (E.K. Co.)		9	3d.
Kodak Filters and Pola Screens		6	3d.
Kodak Lenses, Shutters and Portra Lenses		6	3d.
Kodak Photoguide (Kodak Ltd.)		17	9d.
Kodak Plates Book		2	3d.
Kodak Master Photoguide	1	1	0d.
Kodak Ektachrome Film		4	6d.
Brownie Book of Picture-taking		4	6d.
Better Snapshots of Your Children		4	6d.

KODAK DATA BOOKS

... best-selling technical handbooks written by Kodak experts



Kodak Processing and Formulae

Completely up-to-the-minute with all the latest on processing principles. It tells: How a developer works; factors affecting time, temperature, agitation, activity; replenishers; stop baths, fixers, tank processing; paper development. 28 pages of formulae. **PRICE: 3.6.**

Kodak Films

Prepared for the convenience of photographic craftsmen who desire more than a superficial knowledge of the Kodak range of negative materials. Fifty-two pages packed with valuable information on film properties, handling, etc., plus tables on exposure, development, and sensitometric data. **PRICE: 3.6.**

Kodak Papers

Thirty-six attractively illustrated pages crammed full with up-to-date authoritative, technical and general

information on using Kodak Sensitized Papers. It covers characteristics, selection and use of Kodak papers, plus print faults, stains, mounting, etc. **PRICE: 2.6.**

Flash Technique

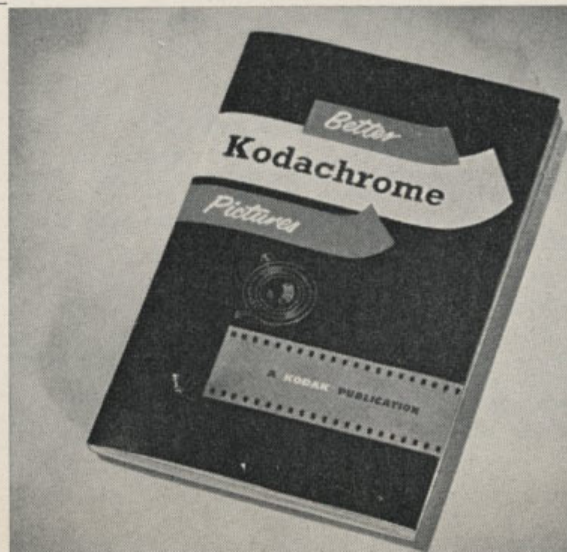
Packed with detailed information on the modern fascinating technique of making pictures by flash. Covers all types of methods such as: Flash away from the camera, indirect flash, multiple flash, flash with colour, exposures for flash. **PRICE: 3.6.**

Enlarging Technique

A "digest" on the art of enlarging negatives — of vital interest to both the novice and the expert. It outlines the technique of print enlarging in simple, well-explained terms — particular attention is devoted to the finer aspects of masking, combination printing, toning and finishing. **PRICE: 3.6.**

Better Kodachrome Pictures

A production that is all-Australian both in data and illustrations. It tells how to take better pictures in colour with Kodachrome film under local conditions. This book is a practical, straightforward guide for the beginner; yet it contains all the information that would normally be required by both the beginner and advanced enthusiast. It explains in easy-to-follow sequences the variations in subject type and lighting conditions you are likely to encounter, and how to adjust the camera to meet every situation — and what is more, illustrates them in full colour. For those who prefer to take colour pictures by a simpler method it shows how to set the controls of the camera so that the pleasures of colour photography can be enjoyed in the carefree manner possible with a box camera. **PRICE: 6.3.**



Protect Your Snapshots with KODAK ALBUMS

... for Kodak Albums help you to preserve for tomorrow the fun of the snapshots that you make today. They provide you with an easy-to-keep yet permanent picture record that you will enjoy and treasure in the years ahead. Those illustrated here are just a few selections from the wide range of Kodak Albums available.

GLEN ➤

Neat and attractive in a range of rich-looking leatherette covers in various colours. Of loose-leaf construction and firmly secured with a tasselled silk cord. The cover is gold stamped "Photographs". 20 grey leaves. Size 10½ x 8½in.

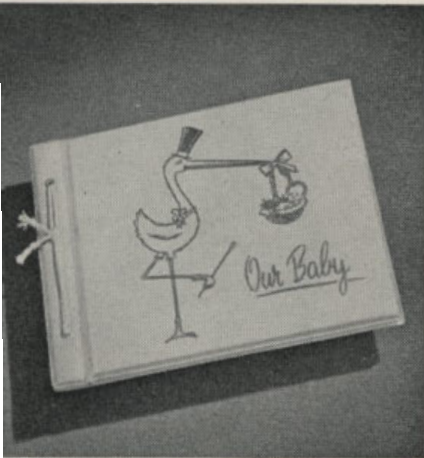
PRICE: 15.9.



◀ RIVIERA — BABY

Keeps all your baby's pictures together for a lifetime of "looking back". Has stork design and the words "Our Baby" embossed in gold on the front cover — both covers are plastic covered and washable. With tasselled cord binding it is available in pink or blue. Spare leaves are also available. 25 leaves. Size 10½ by 9in.

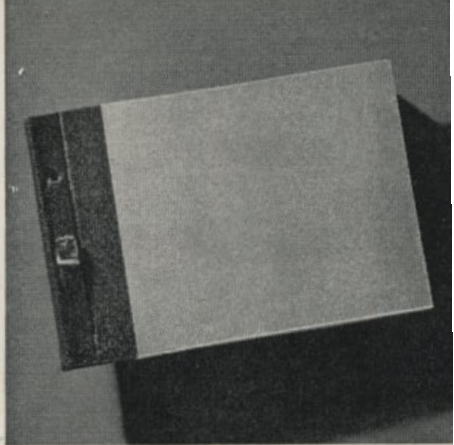
PRICE: £1.9.6



CAMERA STUDIES ➤

Its attractive coat-of-arms cover design adds a touch of distinction, thus making it ideal for gift purposes. This theme is further enhanced by the gold lettered "Camera Studies". It is available in a range of assorted coloured covers which are eyeletted and corded to match. 20 blue-grey leaves. Size 4: 9½ x 10½in.

PRICE: £1.5.0



SNAPSHOT ▲

A handy medium-size album for snapshot prints and small enlargements. Has black leaves, stiff card covers and strap and buckle binding. In a range of colours in one size only. 20 leaves. Size 6½ by 9½in.

PRICE: 9.0.

Photo Studies —

No. 1 1 5 3

No. 3 1 15 3

Ormond Series 19 9

Regal —

No. 1 18 3

Spare Leaves (12) 5 10

No. 3 1 6 6

Spare Leaves (12) 7 6

Strand Special 3 7 9

Renown —

No. 1 1 12 0

Spare Leaves (24) 6 2

No. 2 2 2 6

Spare Leaves (24) 7 9

No. 3 2 10 0

Spare Leaves (12) 4 6

Austral Negative Album —

2½" x 3½" 18 6

24mm. x 36mm. 1 5 9

TURN YOUR SNAPSHOTS INTO MASTERPIECES WITH A **FRAME** FROM KODAK

A. PARKER. In three styles — shadow box, decorative corners and plain. Economical all-wood frames with slide-in rack, reversible strut, and cut-out mount. In gold, grey and ivory.

B. ARTLINE. Tastefully modern shadow-box, all-metal frame: in dove-grey with "silver" front rim. Has slide-in back, cut-out mount and two-way strut. Size 8 by 10in.

C. TODD. Miniature Metal. For miniature portraits with gold figured frame, convex glass, and reversible strut.

D.—REYNOLDS. Neat metal frame with floral corner pattern — in antique gold and nickel. With convex glass, mount, and reversible strut. 5 sizes.

E. HOGARTH. Smart brass frame in gilt or chrome. With convex glass, cut-out mount, reversible strut. 5 sizes.



Parker —

Colour Print:	
3½" x 5"	7 10
Shadow Box:	
3½" x 5½"	8 10
4½" x 6¼"	10 6
6" x 8"	12 0
8" x 10"	14 3
10" x 12"	17 6
12" x 15"	1 6 3
16" x 20"	1 14 8

Decorative Corner:	
6" x 8"	8 8
7½" x 9½"	10 0
8" x 10"	11 0
9" x 12"	13 0
10" x 12"	13 1

Plain:

Postcard	5 3
4" x 6"	5 3
6" x 8"	6 9
7½" x 9½"	8 9
8" x 10"	9 0
9" x 12"	11 0
10" x 12"	11 6

Artline:

8" x 10"	1 2 0
----------------	-------

Todd —

Oval:	
1¾" x 2¼"	12 4

Reynolds —

2½" x 3½"	11 0
4½" x 6½"	16 6
6" x 8"	18 0
8" x 10"	19 6
10" x 12"	1 6 9

Hogarth —

3½" x 5½"	17 0
4½" x 6½"	18 0
6" x 8"	1 0 3
8" x 10"	1 6 8
10" x 12"	1 12 0



A



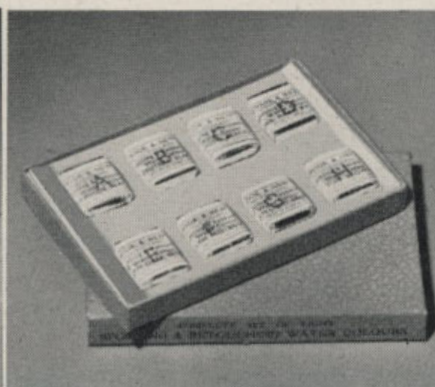
B



C



D



E



F

Colouring, Retouching, and Mounting

(A) **Kodak Photo Paste** — Excellent for mounting snapshots in albums—no bulges, no curled corners. Prints lie flat and will not cockle or stain.

Prices: 2 oz., 2/6; 4 oz., 3/0; 16 oz., 6/6.

(B) **Morgan Photo Oil Colour Outfit**—Has 14 different colours capable of producing almost any shade or tint. Also has reducing medium and an instruction leaflet.

Price: £1.16.9.

(C) **Austral Transparent Water Colours**—Excellent for all colouring purposes. In sheets of stamps of 10 different colours—each stamp dissolves in water to make dye. With instructions.

Price: 2.10.

(D) **Velox Water Colour Outfit**—Colours are quickly mixed and easily applied, with excellent results. Outfit comprises Velox Water Colour Book (twelve different colours with instructions), palette and brush. Extra books and spare leaves are available as replacements.

Price: 10.0 (Book only 5.3).

(E) **W. & N. Spotting and Retouching Water Colours**—For the removal of scratches or dust marks on prints, or the reduction of flesh shadows, etc. Available in sets of eight cakes of various blacks and browns.

Price: £1.1.6.

(F) **Ideal Photo-Corners**—For mounting prints in albums. Are strongly made and sure to stick quite fast. Available in a wide range of colours. In boxes of 100.

Price: 1.0.

W. & N. Photo Tints—Are perfectly pigmented, highly concentrated, easily controlled and applied. Outfit No. 1—a water colour set containing eight colours. Outfit No. 2—an oil colour set containing eleven colours and other necessary accessories for successful hand colouring.

Prices: No. 1, 18.6; No. 2, £1.16.0; No. 3, £2.6.9.

W. & N. Spotting Brushes—Accurately made from selected sable hair firmly set in a nickel mount; wooden handle. In a range of sizes from No. 00 to No. 6.

Prices: From 1/10.

Johnson Pen-Nib Trimmer—An invaluable yet economical outfit comprising twenty nibs and one holder. The nibs have a razor sharp cutting edge for trimming prints.

Price: 11.0.

Kodak Oil Medium—A very light application over the print prepares the surface for colouring with pencils, such as Stabilo Pencils. Excellent as an aid to blending colours.

Price: 1.3.

Kodak Retouching Medium—This holdfast transparent retouching medium is prepared from a highly approved formula for use with either varnished or unvarnished negatives.

Price: ½ oz., 1.6.

Kodak Liquid Glue—Strong all-purpose glue; ideal for mounting prints, glueing leatherette to cameras and all such minor darkroom jobs. In 2 oz. tube.

Price: 2.0.

Enjoy the magic of movies . . .

KODAK HOME MOVIE EQUIPMENT

You make snapshots, of course. Lots, perhaps, in colour. And it's wonderful, indeed, to have these highlights of your life.

But look around you — that young dynamo you call "son"; that whirlwind you call "daughter". Have you ever known them to walk when running is so obviously the only sensible way to get places. Or remain completely still, try though they may? Even then there's a giggle . . . a grin . . . an ear to scratch.

For that's how children were meant to fill their colourful never-still world. Life just won't stand still for you — or for your camera. And that's where movies have a magic of their own . . . for all picture makers . . . with all subjects!

And movies tell such a wonderful story. Just as you'd tell it step by step — a living, moving,

colourful life-like story. And with Kodak's modern movie equipment movies are as easy to make as snapshots. So inexpensive too. With a 25 ft. roll of 8mm. Kodachrome Film you can shoot anything up to 40 scenes or so (enough say for the movie highlights of a week-end) — a running cost of a little more than one shilling a shot. And with each reel first cost is last cost. When exposed, the film is processed by Kodak without extra charge and is returned to you post free ready for projection. Ask your Kodak dealer to show you the movie equipment described in this catalogue. Remember, the best time to start a personal movie diary is now. Every day that goes by, you're missing scenes and incidents you'd later give the world to have filmed.

KODAK MOVIE FILMS

KODAK 8mm. MOVIE FILM

The ideal movie film size for true to life home movies. The same full colour film as supplied for 16mm. cameras, it takes a smaller picture . . . more pictures on the same length of film. You cannot therefore project 8mm. movies as large as 16mm.; but you can show 8mm. movies on screens up to 4 feet or more in width. 8mm. film, of course, costs less than 16mm. — yet is easily adequate for wonderful home shows.

KODAK 16mm. MOVIE FILM

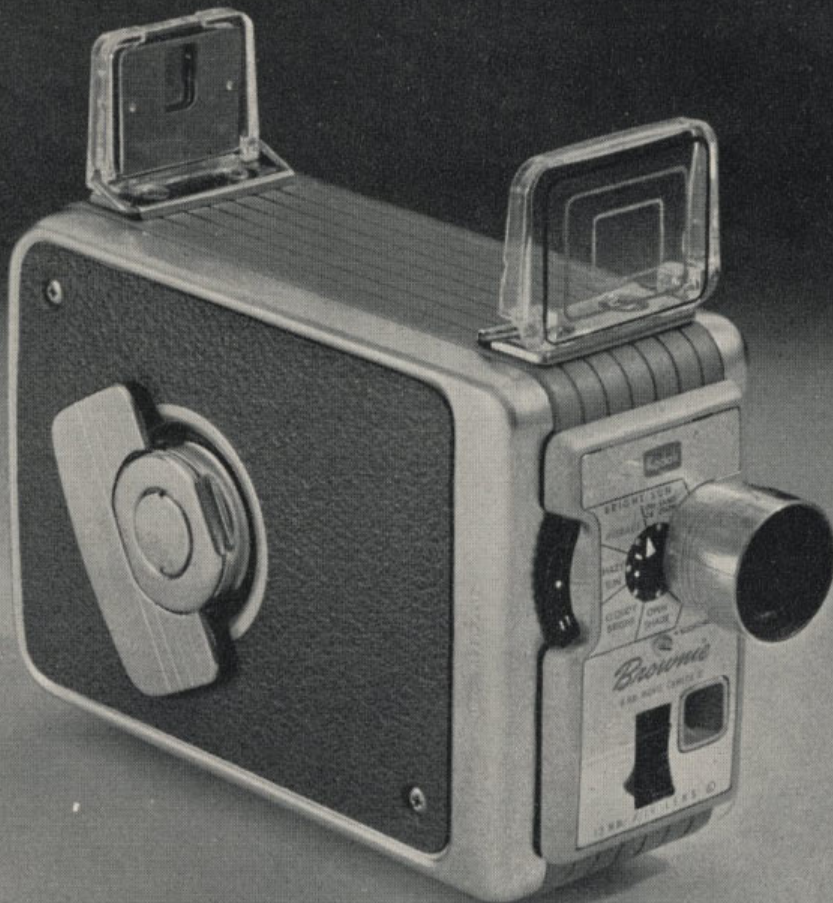
The larger images on 16mm. film can be shown on screens up to 8 . . . 10 . . . 12 feet in width. And on smaller living-room screens 16mm. movies will naturally be somewhat sharper than those from 8mm. film. Too, while there are versatile 8mm. cameras, there are more versatile 16mm. cameras.

In brief, while 8mm. movies are wonderful indeed for personal film records, 16mm. movies are even better in the home . . . far better for

large-group showings at clubs, in small auditoriums.

PRICES:

8mm. Kodachrome Movie Film (Type A or Daylight) 25 ft. roll including processing	£2.6.6
8mm. Kodachrome Magazine Movie Film (Type A or Daylight) (25 ft.) including processing	£3.2.6
8mm. Kodachrome Movie Film (Daylight) for Paillard Bolex Camera — 100 ft. Roll including processing	£8.8.0
16mm. Kodachrome Movie Film (Type A or Daylight) 50 ft roll including processing	£3.8.6
16mm. 100 ft. Roll (Single or Double Perforation) including processing	£5.19.0
16mm. 200 ft. Rolls (Single or Double Perforation) including processing	£11.9.0
16mm. 400 ft. Roll (Single or Double Perforation) including processing	£22.9.0
16mm. Magazine (50 ft.) including processing	£3.18.6



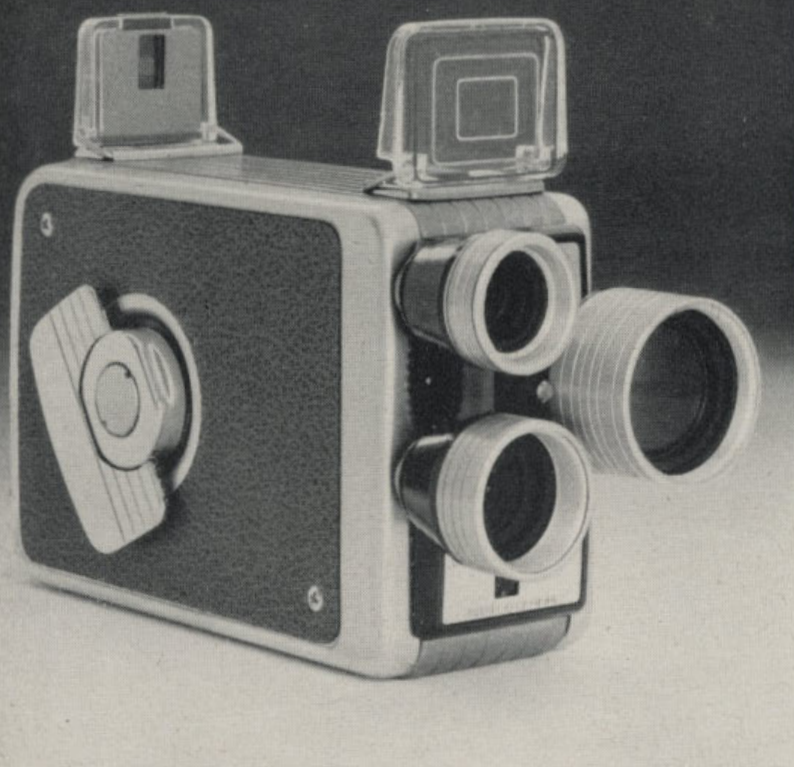
BROWNIE MOVIE CAMERA MODEL II

The most popular of the famous range of 8mm. Brownie Movie Cameras. This inexpensive movie camera provides all the fun of making sparkling 8mm. full-colour home

movies with the simplicity of taking black-and-white snapshots. All the user has to do is load, set the lens aperture pointer (according to the lighting conditions — bright, dull, etc.), and press the button. A fast Lumenized 13mm. Cine Ektanon f/1.9 lens ensures bright sharp pictures. Sprocketless loading makes film threading easy and straightforward — film is simply slipped into the gate and onto the take-up reel. Other features are: Long-running spring-driven motor; two-position exposure release; collapsible plastic viewfinder with parallax correction; easily read footage indicator; finger-tip click stop aperture control; and handy tripod thread. All metal construction, with satin chrome and leatherette finish. Loads with double-run Kodachrome Movie Film.

PRICE:
£15.0.0



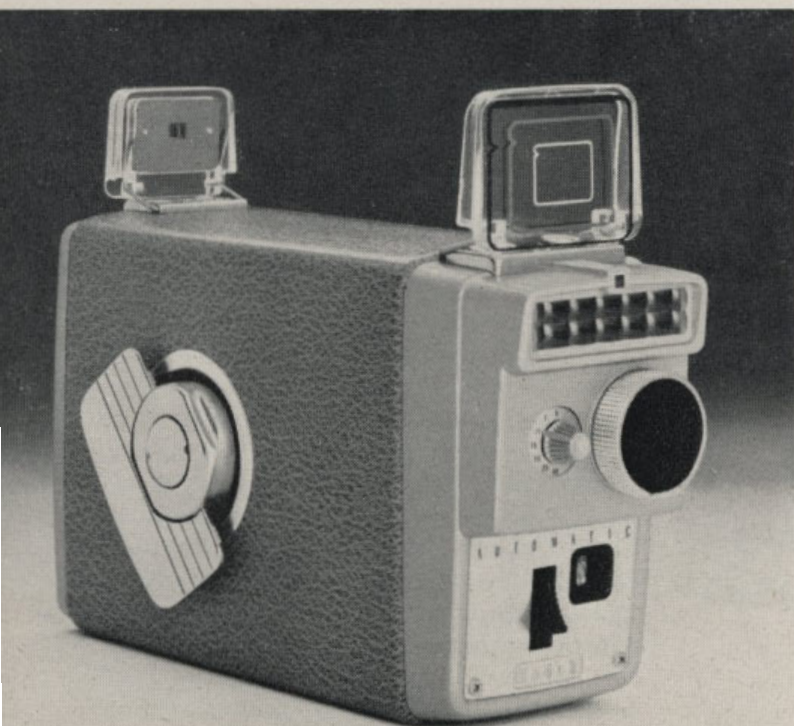


BROWNIE 3-LENS TURRET

You'll be the master of every movie making situation with the Brownie 8mm. 3-Lens turret camera. Simple to operate and reliable to use, it features a lens for every purpose. You can shoot with the normal Ektanar 13mm. for average scenes, turn to the Ektanar 9mm. lens for wide angle shots or turn to the Ektanar 24mm. lens for telephoto shots. All lenses are pre-focused and apertures to $f/1.9$ are set by rotating a clearly marked knurled ring. Other features include eye level viewfinder with adjustment for parallax and frames for each lens, long run spring motor, sprocketless loading, footage counter, solid metal construction and provision for tripod fitting. Loads with double-run 8mm. film. Carrying cases from 27/6d. are available as an accessory.

PRICE: £32.0.0.

BROWNIE MOVIE CAMERAS



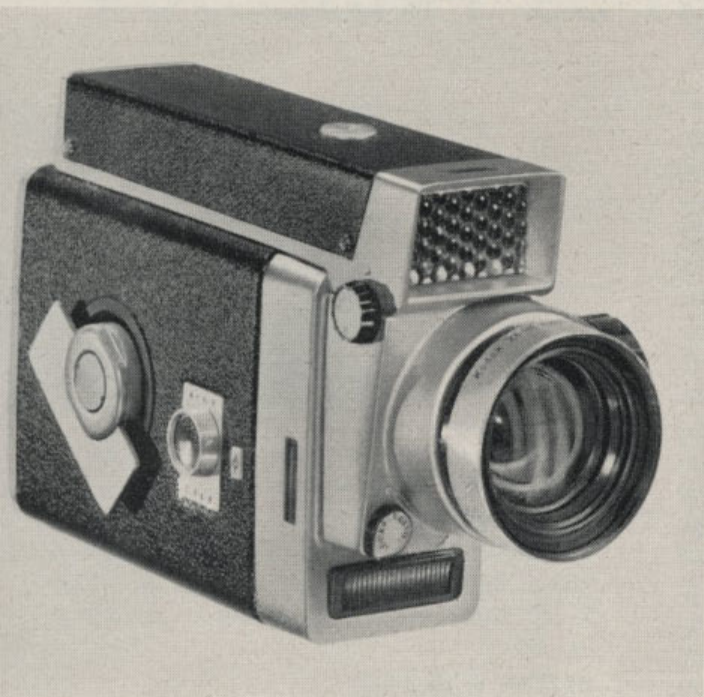
BROWNIE AUTOMATIC

A new Brownie movie camera for completely automatic movie making. There's no "stop and start" filming with this camera because it automatically adjusts the aperture to changing light conditions. For instance, if you're shooting in bright sunlight and the sun moves behind a cloud, causing the light to fade, there's no need to stop — make adjustments — and start again. The Brownie Automatic Movie Camera's built-in photo-electric exposure cell allows you to film all you see without the worries of under- or over-exposure or interrupted sequences. Other features are: Ektanar $f/2.7$ lens, long run motor, parallax correction, eye level viewfinder, handy footage counter and an automatic warning device if there is insufficient light to shoot. Loads with double-run 8mm. film. Carrying cases from 27/6d.

PRICE: £36.0.0.

KODAK ZOOM 8 REFLEX CAMERA

AUTOMATIC f/1.9

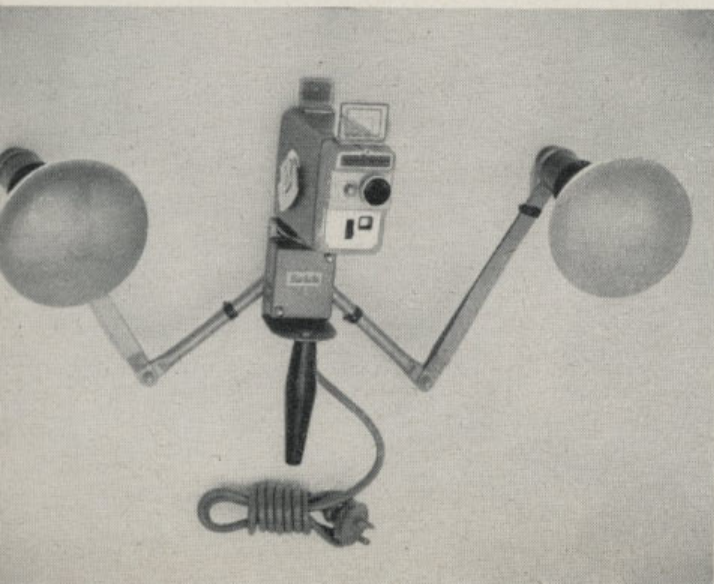


Latest and most versatile addition to the Kodak range of 8mm. movie cameras, the Zoom 8 is a combination of precision engineering and modern camera styling. It features push button zoom — push the zoom button up and the f/1.9 Ektanar lens zooms to 9mm. wide angle; push it down and it zooms to 25mm. telephoto; push it in and the film is exposed. Lens can also be zoomed or set at any position manually. Other features include: through-the-taking-lens viewing; automatic exposure control indoors and out; camera may also be set manually; pointer on side of camera shows aperture being used; anti-clockspringing device that prevents film from unspooling during loading; dial to adjust for film speeds from 10 to 40 ASA; 15 foot exposure on one winding; adjustable viewfinder for individual eyesight; footage meter that resets automatically; solid metal construction. With de luxe field case.

PRICE: £105.17.6.

KODAK MOVIE LIGHT

A versatile lighting unit for round-the-clock movie making. Cleverly designed, it may be attached to practically any camera with a built-in tripod socket. When fitted with two 500W mirror-back lamps it provides ample illumination for the filming of even large groups. Special spring steel arms have friction elbow joints to permit them to be arranged to a set width or folded together when not in use. Plugs into any household 240V outlet.



For best results with Kodachrome Movie Film, see details of exposure in the table below. Generally, for subjects close to the camera, the lamps should be close together, for subjects farther away lamps should be farther apart. If possible, the background should be suited to the type of subject and should not be of a distracting nature. Best results are obtained if the subject is fairly close to a light coloured background.

PRICE: £6.15.0. (Lamps extra)

INDOOR EXPOSURE TABLE

Lamp-to-subject distance using two 500-watt mirror backed 3400°K. floodlamps and the Kodak Movie Light with Kodachrome Type A Film.

Lens Opening	Lamp-to-Subject Distance
f/4	4 to 6 ft.
f/2.8	6 to 8 1/2 ft.
f/2.3	7 to 10 ft.
f/1.9	8 1/2 to 12 ft.

These distances are based on the normal operating speed of movie cameras which is 16 frames per second.

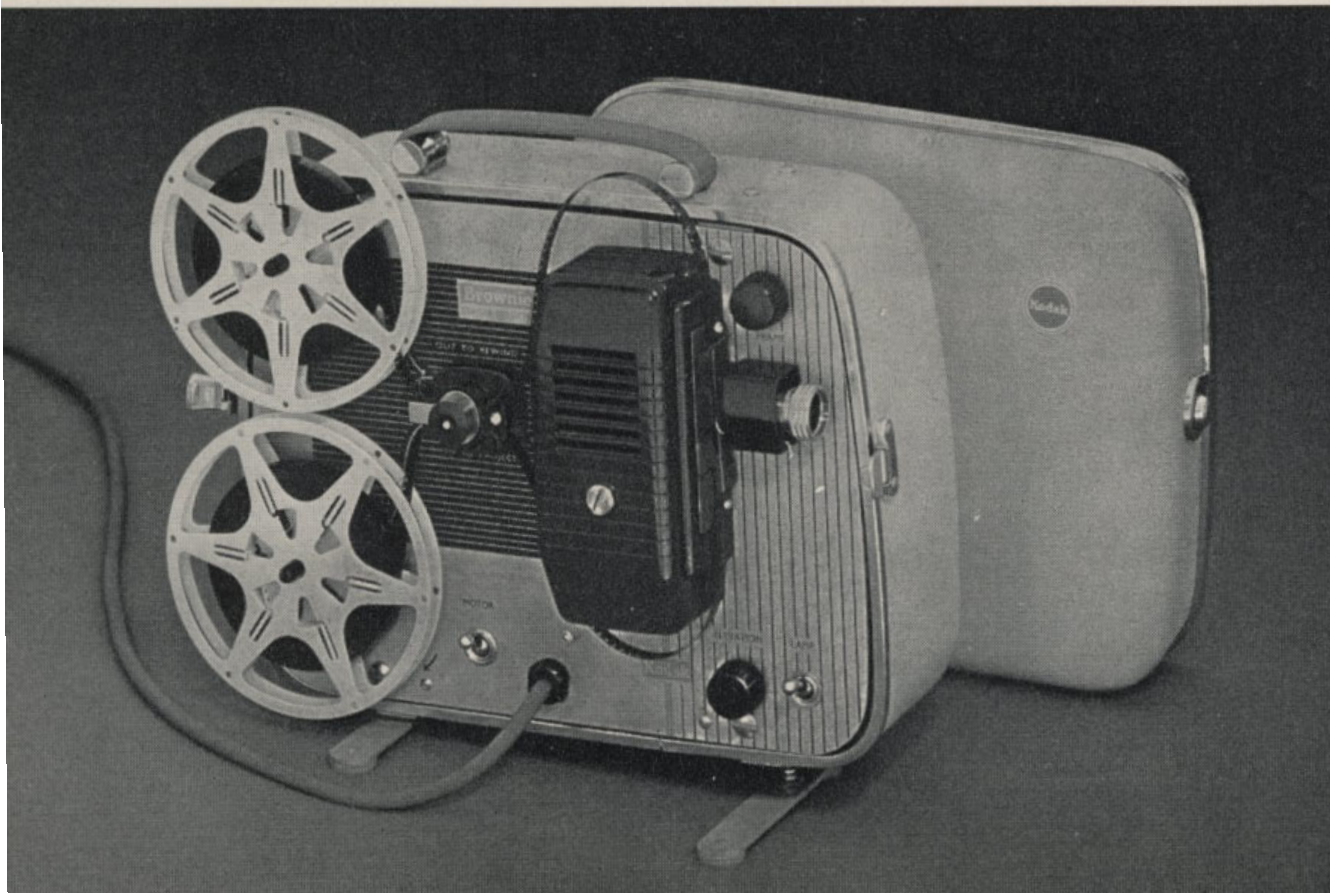
BROWNIE EIGHT-58 PROJECTOR

Simple-to-operate, highly efficient partner to the Brownie Movie Camera or any other 8mm. camera. The projector is neatly built into its own smart case, light and easy to carry. The revolutionary lamp and special lens give a large and brilliant screen image, e.g. 18 x 24 in. at 10 ft. or 30 x 40 in. at 15 ft. Film threading is quick and straightforward, using single sprocket; clear markings show the film path to be followed. Holds up to 200 ft. of 8mm. film. Power re-wind. Low operating temperature. Low current consumption means that it can be run quite safely off a normal A.C. lighting circuit; it can be adjusted to suit supplies from 200 to 250 volts. Combined motor/transformer saves weight and cost. Motor provides constant projection speed despite voltage fluctuations. Simple, positive framing controlled by knob above the projec-



tion lens. Gate quickly and easily dismantled for cleaning. Separate switches for motor and lamp. Elevation adjustment up to 10 degrees with positive lock. Nylon and oil-impregnated bronze bearing throughout requiring no oiling. 8½ ft. cable which can be stored quickly in the lid.

PRICE: £38.15.0



CINE-KODAK K-100 (16mm.)

STANDARD MODEL (not illustrated) — When you use the versatile Cine-Kodak K-100 Movie Camera, the only limit is your own imagination. Many professional effects can be achieved with the camera itself; in addition, an auxiliary hand crank can be used to make multiple exposures, fades and lap dissolves or vary the exposure for extremely adverse lighting conditions. A full range of shutter speeds from 16 to 64 f.p.s. plus single-frame exposure is provided. Fitted with a 25mm. Kodak Ektar f/1.9 lens. (Available also in the f/1.4 lens model.)

Lens and matching viewfinder are interchangeable for telephoto and wide-angle shots; the new type spring motor will expose nearly half the 100ft. roll capacity with one winding. Weighing only 5½ pounds, it is complete with field case.

PRICE: £141.0.0.

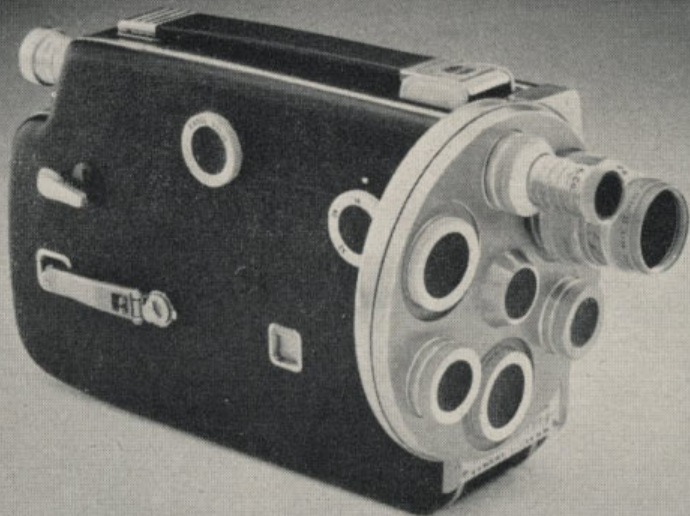
TURRET MODEL (illustrated) — A precision 16mm. camera with all the features of the standard model K-100 with the added versatility of a turret-head. Fitted with 25mm. f/1.9 or 25mm. f/1.4 Ektar lens and matching viewfinder lens, the turret model has provision for two other lenses and matching viewfinder lenses. Weighing only 6¼ pounds, it is complete with field case.

PRICE: £157.12.0.

CINE-KODAK ROYAL MAGAZINE (16mm.)

It's so easy to make fine movies with the 16mm. Cine-Kodak Royal Magazine Camera. It loads in just three seconds with a drop-in magazine; this means that film types can be changed instantly right in the middle of a roll without any cranking back or re-threading. Shutter gives selection of 16, 24 and 64 frames per second with single-frame exposure for animation or stop-motion effects. Fitted with a Cine-Ektar 25mm. f/1.9 lens. A built-in exposure guide indicates correct setting; the zoom-type optical finder adjusts for lenses from 15mm. to 152mm. Complete with compartment case.

PRICE: £94.12.0.



KODAK MOVIE CAMERAS





KODAK PAGEANT 16mm. SOUND PROJECTORS

Kodak Pageant Sound Projectors — unmatched in the 16mm. field — are truly designed and engineered to make motion pictures easier and more effective in commercial and personal use.

Pageant Projectors are easy to use

Only Pageant Projectors bring you **all** the features that make for easy set-ups and operating convenience: reel arms that fold into place without so much as turning a screw; attached, ready-for-use drive belts; simplified threading with a minimum of rollers and threading points; conveniently located and simple controls.

Pageant Projectors are truly dependable

Every Pageant Projector is lubricated for life at the factory through the use of oil-impregnated bearings, ball bearings with sealed-in lubricant, and long-wearing nylon gears. As a result, Pageant Projectors taken from stock have run more than 1,000 hours without stopping — roughly equal to 2½ years of normal use.

Each Pageant model is built to provide a superb picture, to capture the full tonal range of the sound track, and to give long and dependable service with minimum maintenance.

Pageant Projectors pick up all the sound

Pageant tonal quality is unsurpassed because a unique fidelity control makes it possible to adjust the scanning beam to any 16mm. sound track, regardless of placement. Pageant's true-rated amplifiers cover a frequency range of 50 to 7,000 cycles per second. And every Pageant Projector has a well-baffled speaker which may be placed at the screen location for best results.

Pageant Projectors yield brilliant pictures

Pageant Projectors provide the extra screen brilliance often needed for "long throws" or where rooms are hard to darken. Increased cooling capacity permits the use of 1,000- and 1,200-watt projection lamps in place of the standard 750-watt lamp.

MODEL AV-085-F1 (Illustrated)

Here's a true Pageant Projector filled with quality features, but priced within the range of everyone — an ideal machine for 16mm. sound-and-silent projection in classrooms, clubrooms, offices, and other locations where the extra sound of higher-wattage models may not be required.

The Model AV-085-F1 has every basic essential for successful motion picture screenings — Super-40 Shutter for extra screen brilliance; well-baffled, 11-inch oval speaker, fidelity control, and eight-watt amplifier for true sound quality. And, like every Pageant, it's lubricated for life at the factory . . . ready to give lasting service when you want to use it.

Extremely compact, the Model AV-085-F1 comes in a single light-weight case with built-in speaker in cover and new scuff-resistant "spatter finish." Handsome in appearance as well as performance, a truly economical buy for anyone using projectors widely in either education or business. Weight, without transformer, 33 lbs.

PRICE: £266.10.0.

MODEL AV-255-S

The newest model in the Kodak Pageant Sound Projector line, the AV-255-S, can be used both in average-size classrooms and in larger auditoriums, lecture halls, science labs, and similar places where it is often difficult to meet projection requirements. Its new 25-watt amplifier, coupled with a heavy-duty, well-baffled 11-inch oval speaker, specifically designed to handle the increased output, provides the extra sound capacity needed . . . and, being portable, the projector can be moved from room to room quickly and easily.

To complement the increased sound capacity, the exclusive Super-40 Shutter and a 1,200-watt projection lamp give a brilliant screen image even with the longest throws. Weight, without transformer, 41 lbs.

PRICE: £317.12.6.

MODEL MF 2

Here's the Pageant Projector for use not only in projecting conventional sound motion pictures with optical (photographic) sound tracks, but also for recording and playing back sound on magnetically striped film. With the Pageant MF2, you can add sound to your films conveniently, inexpensively. Likewise, magnetic sound tracks, "full- or half-width," can be applied to optical track films.

Adding sound to your motion pictures with the Pageant Model MF2 is much like using a tape recorder. Any 16mm. motion picture, single or double perforated, may be economically coated with a magnetic oxide stripe; on this you record your narration, sound-effects, musical background, etc.

Operates from 210V to 250V mains.

PRICE: £507.15.0.

GENERAL FEATURES OF ALL PAGEANT SOUND PROJECTORS

PROJECTOR

Threading — Simple, straightforward, from supply reel through mechanism and sound system to take-up. Loop-former speeds threading, lets you restore "lost loops" without stopping machine.

Film Protection — Sprocket clamps have Tenite rollers. For film protection, no stationary parts contact picture or sound-track areas.

Film Capacity — 2,000 ft. of 16mm. film.

Film Movement — Nonskip-type, ball-bearing pivoted tandem-tooth movement. Special tungsten carbide pull-down tooth assures long wear.

Rewind — Motor-driven, smooth, safe — no transferring belts or reels. "Knee-action" lever guards against threading in rewind position.

Gate — Readily removed for inspection and cleaning without use of tools. "Floating-pressure" design provides optimum handling of films.

Sound-and-Silent Speeds — Constant-speed motor for sound or silent projection (24 or 16 frames).

Super-40 Shutter — Exclusive automatic-shifting three- and two-bladed shutter provides optimum projection at sound and silent speeds, 40% extra illumination at sound speed.

Standard Lens — Kodak Projection Ektanon Lumenized Lens, 2-in. f/1.6 with field flattener.

Lubrication — Mechanism is "lubricated for life" by oil-impregnated bearings, sealed ball bearings and oil-retaining pads.

SOUND SYSTEM

Sound Drum — Rotating-type drum and massive fly-wheel, mounted on precision ball bearings.

Sound Optics — Sealed-in cylindrical lens system produces precise scanning beam on sound track. Fidelity Control provides sharpest possible line of light on sound track regardless of "up" or "down" emulsion position.

Exciter Lamp — Operates on filtered DC from amplifier (AV-085-F1 and AV-255-S). Oscillator in MF2 proves high frequency current for exciter lamp or for record bias and erase. Easily accessible. Unique pin-release lever.

Fidelity Control — Exclusive feature — assures reproduction of full tonal range of film soundtrack.

AUXILIARY EQUIPMENT

Auxiliary Lenses — 1½" f/2.0, 3" f/2.0, 4" f/2.5.

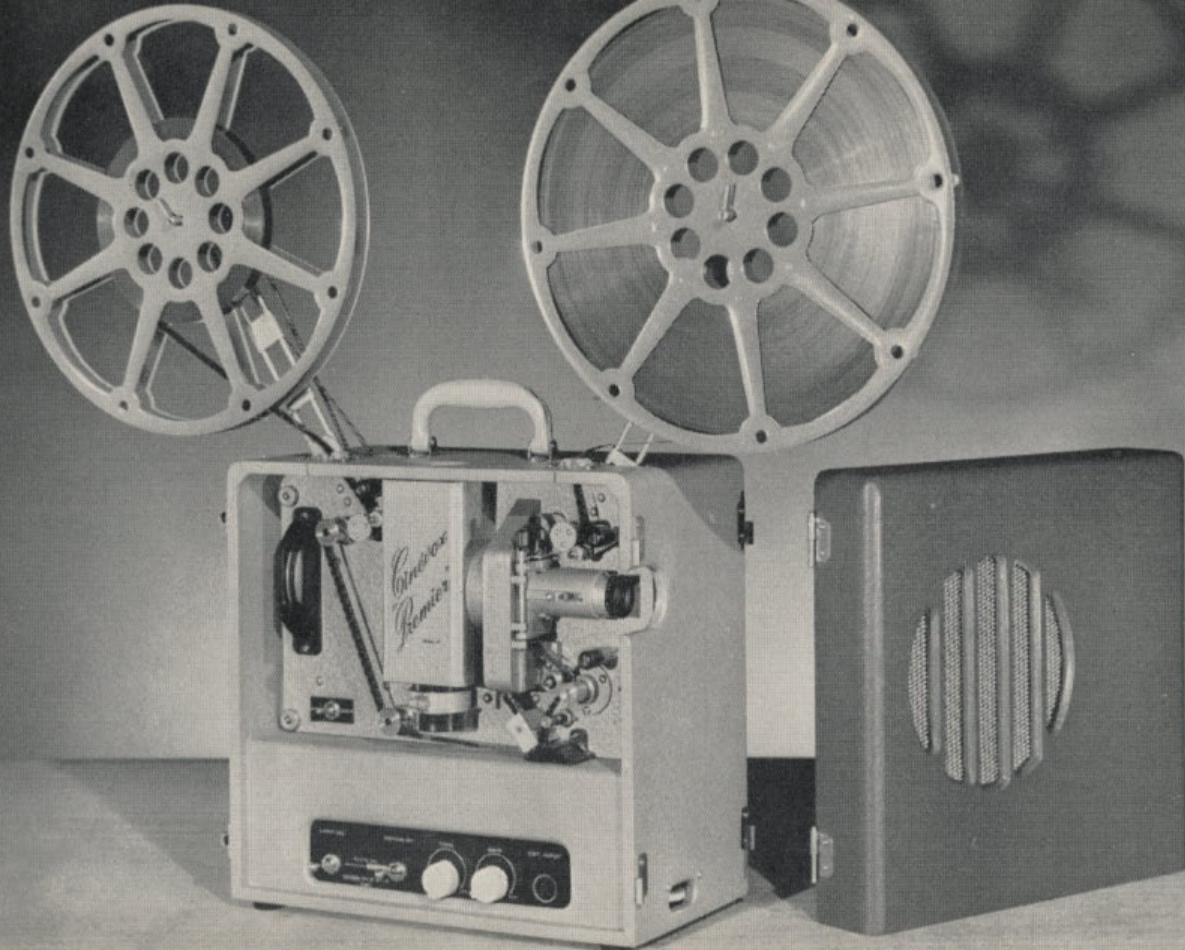
Cine-Kodak Bi-Focal Converter — Two lenses in one — effectively alters the focal length of the standard 2" lens to either 1⅞" or 2½".

Kodak De Luxe Speaker — 12" full range unit, built into a large volume, well baffled enclosure.

Phono Adapter — Links Model AV-085-F1 with any suitable turntable.

Kodak Microphone — The sound system of the Pageant may be used as a public address system with this accessory.

Transformer for Models AV-085 F1 and AV-255-S — Converts 200-240V. A.C. to 105-125V. A.C.



CINEVOX PREMIER PROJECTOR

16mm SOUND

The Cinevox Premier is of entirely functional and simple design incorporating many unique features for brilliant screen projection with exceptional fidelity of sound reproduction. It comes complete — projector, speaker, reel, cable, etc. — in one single, handsome two-tone leatherette-covered case — the whole equipment weighing only 36 lbs. When opened, the case separates into two sections — the first containing the speaker and 40 ft. of speaker cable thus permitting the speaker to be placed adjacent to the screen; the main section contains the projector unit and the amplifying equipment which can be quickly assembled for use. Features are: 2 inch projection lens fully bloomed for maximum light transmission;

operates direct from 240 volt mains; sound output of 4 watts; "Oilite" bearings need no oiling; nylon gear transmission throughout ensuring long service with noiseless and smooth operation; specially designed claw and shutter mechanism to give a rock-steady screen image; 750 watt lamp; 8 inch speaker; variable tone control; 2,000 ft. film capacity; and special provision for microphone or long playing records.

PRICE: £ 222.0.0

Also available is a battery model. Ideal for country areas it has all the features of the 240 volt model plus the added advantage of being completely self contained.

PRICE: £ 243.10.0

MOVIE MAKING ACCESSORIES

Brownie Movie Compartment Case

Ideal for Brownie and similar type 8mm. cameras — protects your camera from weather, knocks and scratches. Made from sturdy leather and lined with red velvet, it has a special compartment for film, etc. It is also fitted with a strong metal clasp and has two leather carrying straps.

PRICE: £3.10.6.

Brownie Movie Gadget Bag

A handy, inexpensive carrying bag that will protect all your movie equipment from dust, dirt and knocks, etc. Made from durable high grade leather and finished in light tan, it has a strong leather shoulder strap, a full length zip fastener and metal feet for longer life. A "must" for all movie enthusiasts.

PRICE: £1.7.6.

Pass Cine Tripod

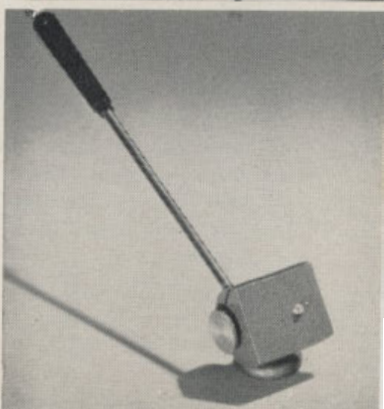
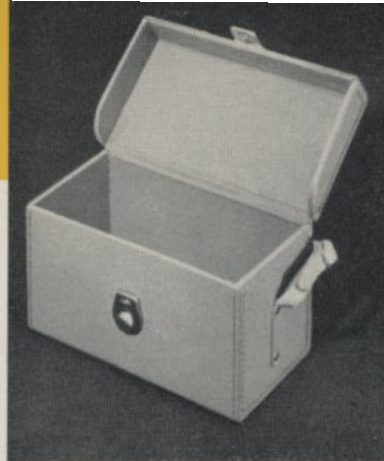
Combining the two prime essentials of a good cine tripod — rock steady support and smooth operation, the Pass tripod is ideal for all but the heaviest cine cameras. Conveniently light in weight, it provides the firm support and flexibility of operation that are essential to precision filming with either close-up devices or long focus lenses. The beautifully finished pan tilt top has a smooth gliding movement that ensures "velvety-smooth" panorams every time. The vertical tilting traverses through approximately 180° while the panning movement travels a complete circle. A convenient screw is located under the platform for storing the handle when not in use.

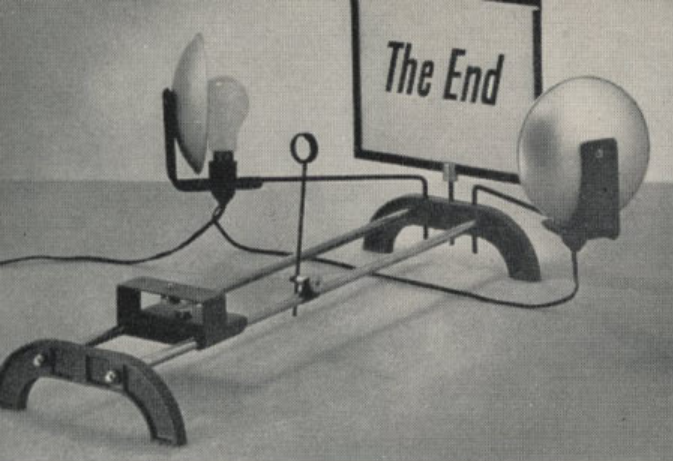
PRICE: £25.1.9.

Barton Pan Tilt Tripod Head

An inexpensive device that will add versatility to, and extend the scope of your tripod work — permits pans and tilts to almost any position; also facilitates framing and subject selection. It is of sturdy all-metal construction to ensure smooth and steady operation. Screws on to any standard tripod thread.

PRICE: £3.18.3.





AUSTRAL CINE TITLER AND COPIER

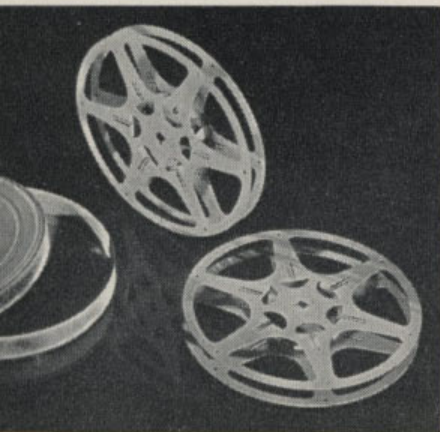
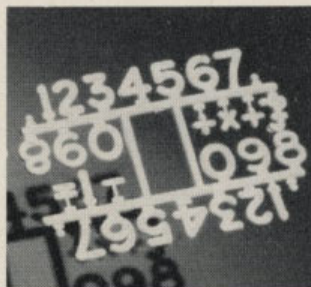
Movie titling is made easy with this compact, efficient home titling outfit. Outfit comprises: Base and camera support, camera platform, two large reflectors, frame support, platform extension block and a high quality supplementary close-up lens. Completely wired ready for use—plugs into 240 volt A.C. mains.

PRICE: £13.8.3.

AUSTRAL TITLING SETS

Give your movies that "professional look" by making your own attractive titles. In washable plastic, each set contains five complete alphabets (with capital and lower-case letters in four colours), two sets of figures (1 to 10), and miscellaneous symbols.

PRICES: Coloured, £1.2.0; White, 14.6.



Kodascope Reels and Cans

Ideal for convenience, safe storage and general handling of movie film — a "must" for home editing. Precisely made within the strictest of tolerances to ensure smooth running with freedom from catching and jamming. Both reels and cans are made from durable lightweight metal.

PRICES: 8mm. 200 ft., 12.6; 400 ft., 16.6; 16mm. 400 ft., 18.0; 1,600 ft., 38.7.

KODAK 60



Kodak Movie Film Cleaner

Ideal for all types of movie film whether colour or black-and-white. It serves a double purpose in that not only does it clean away dirt and grit but it also coats the surface of the film with lubricant — this eliminates stickiness as the film passes through the gate and causes less sound distortion as it passes over the sound head.

PRICES: 4 oz., 7.6; 20 oz. £1.10.0.



Regal Projection Stand

Sturdily constructed and designed to give a lifetime of reliable service. It can be quickly adjusted to any height between 39 and 54 inches from floor level. Fitted with a 12 x 20 inch felt covered swivel table while the rubber-tipped tubular steel legs and sturdy metal struts provide a firm support for all amateur movie projectors. Finished in smart grey with chrome fittings.

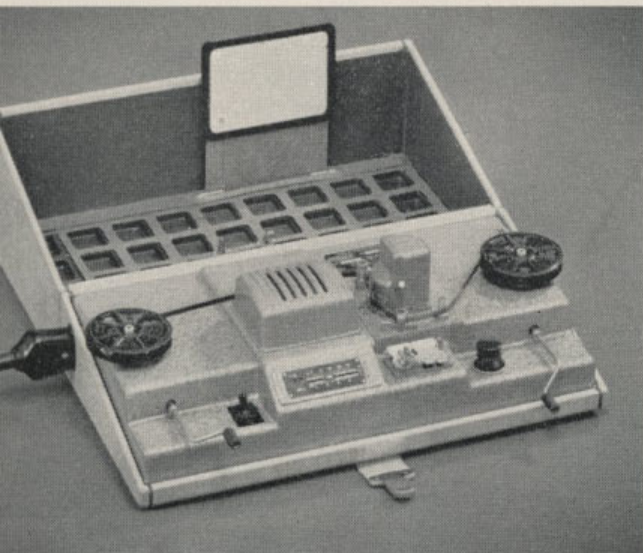
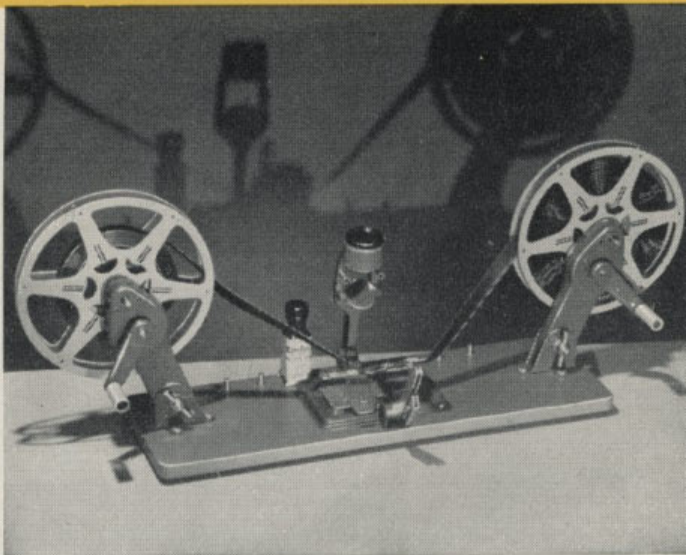
PRICE: £14.0.0

EDITING EQUIPMENT

Marguet Film Editor

A handsome, precise editing unit for use with either 8mm. or 16mm. film. It is fitted with double-gearred rewind controls, automatic universal film splicer and an adjustable optical film viewer. The complete editor folds down to compact proportions for neat storage and ready portability. Capacity is 400 ft. (8mm.), 800 ft. (16mm.). Apart from its wooden baseboard it is of sturdy metal construction with an attractive grey metallic finish.

PRICE: £28.7.0



Meopta 8 mm. Film Editor

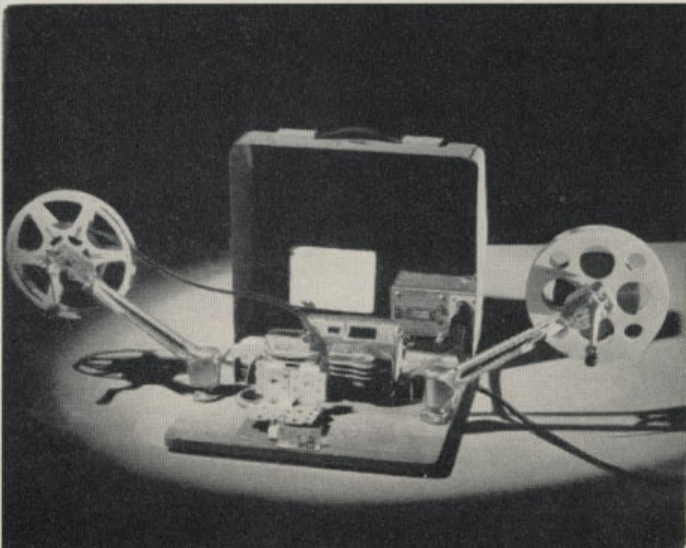
Conveniently portable, this outfit is sturdy, compact and easy to use. With film threaded and light (5-watt) switched on, a few turns of the geared rewind will show action clearly and brightly on the animated viewing screen; a special device notches actual frame projected (for splicing indication); sequences can be filed in compartments ready for splicing; built in indicator automatically measures total film lengths in metres and screening time in minutes (16 frames per second). Complete with a reliable built-in splicer, the whole unit folds up into a handy carrying case.

PRICE: £41.15.0

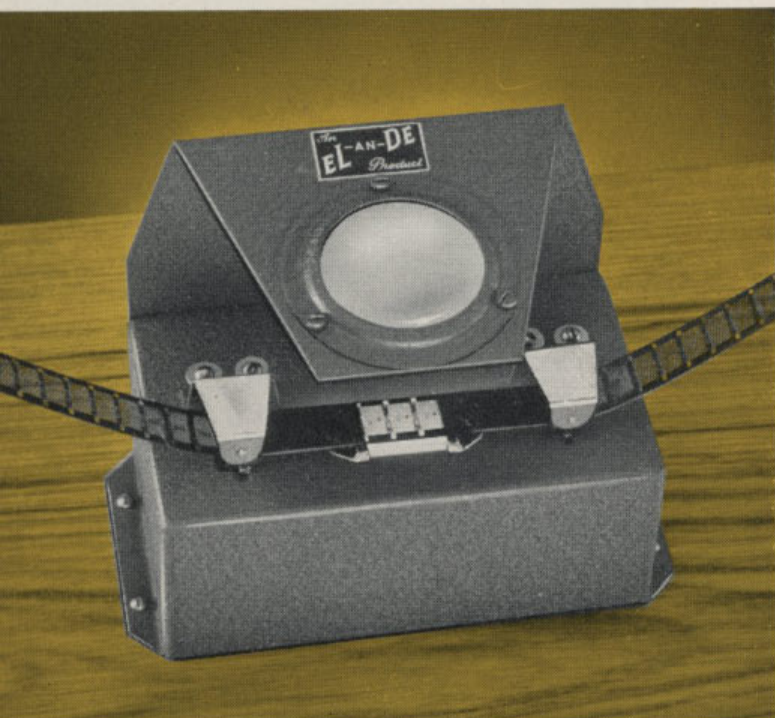
Meopta 16 mm. Film Editor

Designed for first class editing, splicing and rewinding of 16mm. movie films. Incorporates baseboard, modern precision splicer, geared rewinders, animated viewer giving a brilliant projected motion picture image, and automatic scales giving film measurements and projection times. The rewinders, which fold flat when not in use are fitted with brakes, cranks and gears; ratio of rear spindle can be set to operate at either 1:1 or 3:1. The viewer houses a 12-volt 35-watt globe powered by a built-in 240 volt transformer.

PRICE: £55.15.1.



HOME MOVIE VIEWERS



EL-AN-DE Movie Viewer

A simple and inexpensive cine viewer. An important part of your home editing outfit, it can be mounted between your rewinders and next to your splicer. Of all metal construction and finished in smart grey wrinkle-tone enamel it will accommodate 8mm., 9.5mm. or 16mm. movie films. Other features are: Large viewing glass, built in lamp, plugs into 240V mains, long life stainless steel film rollers.

PRICE: £6.6.9.

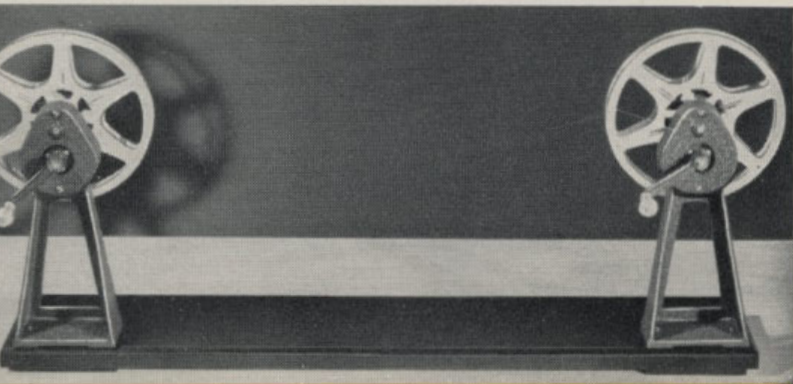


MURAY Animated Viewer With Rewinder

Features a plano-convex prism of high magnification that assures an easy-to-see picture of great brilliance. A collapsible hood is supplied for viewing in a normally lit room. Film tracks are of stainless steel. Has focusing movement and frame marking device. The complete unit is mounted on a sturdy wooden base. The rewind arms are designed to accept 400 ft. reels; the left arm is geared whilst the right is direct drive. Plugs into 240 volt A.C. current.

PRICE: £34.2.6.

REWINDERS & SPLICERS



AUSTRAL REWINDER

Designed for the 16mm. movie enthusiast who requires a heavy duty rewinder of great stability; double gearing ensures smooth and rapid rewinding of small and large reels. Accepting reels up to and including 2,000 ft. it is mounted on a polished hardwood baseboard.

PRICE: £13.9.0

Marguet Universal Splicer

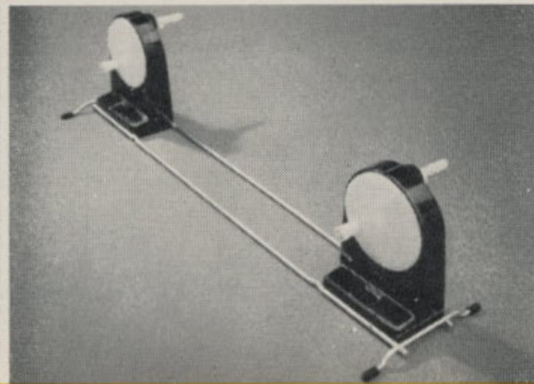
Sure and permanent splices of either 8mm., 9.5mm. or 16mm. movie film are assured when this new and efficient splicer does the job. Exact alignment and secure clean joins are its outstanding features. It is speedy in operation — first class splices can be made in about half a minute. Of sturdy all-metal precision construction.

PRICE: £5.

Marguet Automatic Universal Splicer

For use with 8mm., 9.5mm., or 16mm. film. Permits the making of first class splices in the minimum of time — thanks to its steel cutting plates and its efficient serrated-edged dry scraper. No pre-moistening is necessary. A groove across the lower left hand corner prevents any surplus film cement from spreading along the back of the film.

PRICE: £6.8.3.



KODAK REWINDERS

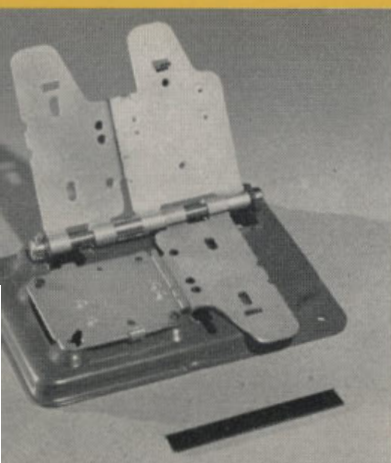
Ideal for the beginning of your home editing outfit. Can be mounted on a baseboard, allowing space in between for a splicer and viewer. Geared 3 : 1, they have "no-oil" nylon bearings.

PRICE: £5.8.0

Kodascope Splicing Outfit

This simple, inexpensive, easy-to-use splicing outfit makes a handy tool for emergency splicing. For use with both 8mm. and 16mm. movie film it is a "must" as an accessory for every movie projector. Consists of splicing block, handy scraper, a bottle of Kodak Film Cement, full instructions for use, and sample pieces of film for practise.

PRICE: 8.6.



MOVIE ACCESSORIES

M. and S. Reels and Cans

A very handy range of 16mm. reels and cans. Sturdily made from finest quality light metal, they are renowned for their long life and reliability. In 800 ft., 1,600 ft. and 2,000 ft. sizes they are particularly suitable for the screening and storage of lengthy programmes.

Prices: Cans and Reels — 800 ft., £1.9.0; 1,600 ft., £2.5.0; 2,000 ft., £2.14.2. Reels only — 800 ft., 14.6; 1,600 ft., £1.2.6; 2,000 ft., £1.7.6.

Kodak Film Cement

A new improved formula. Gives permanent and trouble-free splices. Dries in a few seconds. In four sizes. **Prices: 20 oz., 11.3; 4 oz., 4.6; 1 oz., 2.3; ½ oz., 1.6.**

Kodak Cine Fade Solution

Is a balanced solution of dyes for making one's own "fade-outs" in home movies. Simple to use for both black-and-white or Kodachrome films. In 8 oz. bottles. **Price: 9.0.**

Kodak Lens Cleaner

Keeps lens clean, prevents the growth of fungus. In two sizes.

Prices: 4 oz. 3.6; 1 oz. 2.0.

Austral Lens Cleaning Tissue

Ideal for cleaning projection lenses. Finest quality white velvety soft tissue that will not damage the surface. In books of ten sheets.

Price: 6d.

Lubricating Oil

A highly refined oil especially made for use in projectors. Provides proper and lasting lubrication. In 1 oz. and 4 oz. bottles.

Prices: 4 oz. 3.9; 1 oz. 2.3.

KODAK SERVICES

Kodak Technical Service

A complete photographic service is available through every Kodak Store in the Commonwealth. This service acts essentially in an advisory capacity to help both amateur and professional photographers.

Kodak Camera Repair Service

Available through all Kodak Stores this service includes the maintenance, repair or reconditioning of still and cine cameras and projectors, exposure meters, etc., marketed by the Kodak company. Free quotations available on request.

Kodak Data Books and Leaflets

Those requiring further information upon the technical side of subjects photographic are referred to the wide range of Kodak Data Books and free leaflets which refer in great detail to many aspects only briefly covered in this book.

Kodak Colour Processing

Users of Kodachrome (still or movie) or Ektachrome colour films, are assured the facility of uniform processing at Kodak Colour Processing Laboratories throughout the world. Also duplicate transparencies can be made from selected colour slides.

KODAK STORE ADDRESSES THROUGHOUT AUSTRALIA

ADELAIDE.....	37 Rundle Street
BALLARAT.....	406 Sturt Street
BRISBANE.....	250 Queen Street
CAIRNS.....	103 Abbott Street
GEELONG.....	89 Ryrie Street
HOBART.....	45 Elizabeth Street
LAUNCESTON.....	93 Brisbane Street

MELBOURNE.....	252 Collins Street
NEWCASTLE.....	9 Wolfe Street
PERTH.....	662 Hay Street
ROCKHAMPTON.....	105 East Street
SYDNEY.....	379-381 George Street
TOWNSVILLE.....	166 Flinders Street

KODAK DEALERS EVERYWHERE

All prices in this catalogue are subject to alteration without notice.

Kodak