



KODAK CATALOGUE 1963

PRICE CHANGES

Since this catalogue went to press, certain price changes have been made. They should now read:

Page 2:	Velox Printing Paper SW			
	4¾" x 6½" 100 sheets	£2 0 0
	6½" x 8½" 10 sheets	8 9
	100 sheets	£3 10 5
Page 10:	Kodak Colorsnap 35 Camera	£13 10 0
Page 15:	Always-Ready Type Carrying Cases			
	Retinette	£3 2 9
	Brownie Gadget Bag	£1 17 0
Page 16:	Barton Ball and Socket Head	19 3
Page 23:	Flashbulbs			
	KEC 1 Capless	1 2
	GEC. 1BS Capless	1 3
Page 28:	Plastic Apron	£1 0 0
Page 30:	Barton Print Washing Tank	£6 2 6
Page 34:	Kodamat Rapid Slide Changer	£5 2 6
Page 36:	Kodak Colour Print Mount, Sizes 3½" x 5"			
	or 3½" x 3½"	1 2
Page 46:	(E) W & N Spotting & Retouching Water			
	Colours	£1 2 6
Page 50:	Kodak Automatic 8 Movie Camera	£28 0 0
Page 54:	Kodak Sound 8 Projector	£199 10 0
Page 55:	Cine-Kodak K-100 16mm. Movie Camera	£171 10 0
	Turret Model	£193 0 0
Page 58:	Kodak Projection Screens			
	30" x 40"	£8 13 0
	40" x 40"	£10 6 6
Page 60:	Kodascope Reels and Cans			
	16mm. 1,600 ft.	£1 18 7

23rd September, 1963

Kodak Sensitized Materials

... are always fresh and dependable because they're made in Australia especially to suit all Australian conditions



Verichrome Pan Film

A fast black-and-white film that enables you to take better-than-ever pictures, whether in bright sunshine, on cloudy days or indoors, or at night by flash. ("Pan" means panchromatic—faster and more sensitive to colour and tone values in black-and-white pictures.)

ASA speed number is 125/5° for both daylight and tungsten. Verichrome Pan possesses a remarkable latitude which helps to soften harsh shadows.

Available in all standard roll-film sizes except 35mm. Exposure: Average subject in sunlight: f/11, 1/100 sec.

Tri-X Pan Film

A black-and-white film that combines exceptional speed with complete colour sensitivity. Its ASA speed number is 400/7° for both daylight and tungsten. This means that the film can be used readily, without supplementary flash or flood illumination, for indoor snapshots by available light or night sporting events. The wide exposure and development latitude of Tri-X Pan is exceptional. Tri-X Pan is available in 135, 127, 620 and 120 roll film sizes and in film packs. Exposure: Average subject in sunlight: f/16, 1/200 sec.

Panatomic-X Film

Panatomic-X is a black-and-white fine-grain film possessing extremely high "resolving power," superior acutance (less "light scatter" between the silver crystals), and an ultra-thin emulsion. In addition, it has an ideally balanced panchromatic sensitivity which means a better exposure latitude, a wider tonal range with no blocked highlights or black shadows, and an improved operating speed. It has an ASA speed number of 40/3.5° for both daylight and tungsten. The ultra-thin emulsion drastically cuts development and drying times. Available in 35mm. size in 36-exposure cassettes. Exposure: Average subjects in sunlight: f/11, 1/50 sec.

Plus-X Pan

A fine-grain black-and-white film of high acutance (image sharpness). Of medium speed (ASA 160/5.5°), it is coated with an extremely thin emulsion—one of the reasons for this film's extremely fine grain. A wide exposure latitude makes minor exposure inaccuracies unnoticeable on the final print. Available in 135 size roll films and in a range of sizes in sheet film. Average exposure in sunlight: f/11 at 1/100 sec.

Kodachrome II Film

Available in KR 135 and KR 828 Kodachrome II, yields colour transparencies which may be viewed directly or projected on to the home screen. Daylight Kodachrome II is for outdoor pictures in sunlit hours or for pictures at night with blue flashbulbs. Type "A" Kodachrome II is for use with floodlight or clear flashbulbs.

Price includes processing and mounting in 2 x 2 in. cardboard mounts ready for projection or viewing.

A special service is available whereby duplicate Kodachrome transparencies can be made, if and when required. The Kodachrome Print service has made it possible for users to obtain handy album-size enlargements in full colour from suitable Kodachrome transparencies. Exposure: Average subject in sunlight: f/11, 1.50 sec.

Ektachrome Film

A fast reversal type colour film balanced for exposure in sunlight. Ektachrome may also be used at night with corrective filters. Available in E135, E120 and E620 sizes ASA 32 and in E127 size, ASA 64. Also available for high speed photography is High Speed Ektachrome. In EH135 and EH120 sizes. In daylight type (ASA 160), and in Type B for photoflood photography (ASA 125).

Kodacolor Film

A fast, negative-type colour film for exposure in daylight or at night with clear flashbulbs. When fill-in flash is needed in daylight, blue flashbulbs should be used.

Kodacolor Film is available in 20-exposure magazines to fit 35mm. cameras and in roll film form to fit 127, 120 and 620 size cameras. It has an ASA exposure index of 32 daylight and 20 tungsten. The exposed film is processed into Kodacolor negatives from which Kodacolor Prints are then made.

Prints are 3½" x 3½" or 3½" x 5", depending on whether the negative is square or oblong. Processing and print costs are not included in the film price. Kodacolor enlargements are available in 5 x 5 inch and 5 x 7 inch sizes. Pocket size prints (2½ x 3½) are also available from 35mm. negatives only. Prepaid Processing Mailers for Kodacolor Film are available as follows: DP8 for 8 exposure films and DP12 for 12 exposure films.

PRICES OF KODAK ROLL FILM

VP VERICHROME PAN — 127, 620 and 120, 4.0d.; 616 and 116, 5.0d.; 122, 6.3d.; 828, 4.7d.

FX PANATOMIC X — 135 36 exposure, 11.8d.

PX PLUS-X PAN — 135 20 exposure, 8.4d.

TX TRI-X TAN — 127, 620 and 120, 4.7d.
135 36 exposure, 11.8d.

KR KODACHROME II — 135mm. 20 exposure, 40.0d.
135mm. 36 exposure, 60.0d.; 828, 12 exposure, 31.6d.
(prices include processing)

C KODACOLOR — 127, 120 and 620, 18.0d.
135 20 exposure, 23.0d.

E EKTACHROME — 135mm. 20 exposure, 24.0d.
135 36 exposure, 35.0d.; 127, 120, 620, 18.0d.

EH HIGH SPEED EKTACHROME — 135 20 exposure
31.0d.; 120, 25.0d.

SPEED NUMBERS FOR KODAK FILM

For Daylight

	ASA
Verichrome Pan	125/5°
Tri-X Pan	400/7°
Plus-X Pan	160/5.5°
Panatomic-X	40/3.5°
Kodachrome II	25/3°
Kodachrome II, Type A	40/3.5°
Ektachrome	32/3.5°
Ektachrome Improved (127 size only)	64/4°
High Speed Ektachrome	160/5.5°
Kodacolor	32/3.5°
When using Kodachrome Type A in daylight a Kodak Wratten Filter No. 85 must be used.	

For Photoflood Light

	ASA
Verichrome Pan	125/5°
Tri-X Pan	400/7°
Plus-X Pan	160/5.5°
Panatomic-X	40/3.5°
Kodachrome II, Daylight (No. 80B filter)	12/2°
Kodachrome II, Type A	25/3°
Kodacolor (No. 82A filter)	20/2.5°
Kodachrome Daylight Film should be used in emergency only. In this case a Kodak Wratten 80B Filter must be used.	

Kodabromide Paper

Newest addition to the range of Kodak papers, Kodabromide is a first-class bromide enlarging paper. A combination of a whiter-white base paper with a greatly improved emulsion gives not only brilliant highlights, excellent blacks, and a wide tonal range, but all the latitude, speed consistency and good glazing properties demanded by advanced photographers. Its beautiful sepia tones and the wide choice of surfaces and contrasts make it the ideal paper for the discerning amateur photographer. Available in 25 and 100 sheet packets in a wide range of sizes.

Velox Paper

Velox is the ideal contact printing paper for printing your own snapshots at home. Four degrees of contrast make it ideal as a medium for making prints from a variety of negatives of different degrees of contrast. The tone of Velox is blue-black which is uniform through all degrees of contrast, and equally uniform for a range of development times. Available in glossy in a wide range of contrasts to suit all negatives. Marketed in 25 and 100-sheet packets in sizes from 1½ x 2½ to 3½ x 5½ in.; and 10 and 100-sheet packets in 4½ x 6½ in. and 6½ x 8½ in.

Prices of Kodak Papers

KODABROMIDE

Size	No. of Sheets	Single Weight	Double Weight
2½ x 3½	25	3 6	4 2
	100	10 2	11 10
3¼ x 4¼	25	5 5	6 8
	100	16 0	18 7
3½ x 5½	25	7 6	8 9
	100	1 2 3	1 6 0
4 x 5	100	1 3 2	1 7 0
4¾ x 6½	10	3 11	4 9
	100	1 15 8	2 1 8
6½ x 8½	10	7 0	8 6
	100	3 3 11	3 14 7
8 x 10	10	10 0	12 5
	100	4 12 8	5 8 1
10 x 12	10	15 0	18 6
	100	6 8 11	8 2 1
12 x 15	10	1 2 8	1 7 9
	100	10 8 4	12 3 1
16 x 20	10	2 0 2	2 9 6
	100	18 10 5	21 12 1
20 x 24	10	3 0 2	3 14 0
	100	—	32 8 2

VELOX

Size	No. of Sheets	Single Weight
1⅞ x 2¾	25	2 6
	100	7 11
2½ x 2½	25	2 11
	100	9 2
2½ x 3½	25	3 9
	100	12 6
2¾ x 4½	25	5 0
	100	16 8
3¼ x 4¼	25	5 10
	100	18 9
3½ x 5½	25	7 11
	100	1 5 5
4 x 5	100	1 6 3
4¾ x 6½	10	5 0
	100	1 4 0
6½ x 8½	10	5 3
	100	2 2 3

BLACK & WHITE PHOTO-FINISHING

DEVELOPING

All size roll films and 828 size 3/0 each

All 35mm. films (20 or 36-exposures) 3/6 each

PRINTING

Kodak Film No.	No. of Exposures	Size of Negatives	Kodak Super-Size Prints Size	Price
135	20 or 36	24 x 36mm.	3 1/2 x 5 in.	7d. each
828	8	28 x 40mm.	3 1/2 x 5 in.	7d. each
127	12	1 1/2 x 1 1/2 in.	3 1/2 x 3 1/2 in.	7d. each
127	8	1 3/4 x 2 1/2 in.	3 1/2 x 5 in.	7d. each
127	16	1 1/2 x 1 1/2 in.	3 1/2 x 4 1/2 in.	7d. each
620 or 120	16	1 3/4 x 2 1/4 in.	3 1/2 x 4 1/2 in.	7d. each
620 or 120	12	2 1/4 x 2 1/4 in.	3 1/2 x 3 1/2 in.	7d. each
620 or 120	8	2 1/4 x 3 1/4 in.	3 1/2 x 5 in.	7d. each
616 or 116	8	2 3/4 x 4 1/2 in.	2 3/4 x 4 1/2 in.	7d. each
118	6	3 1/4 x 4 1/4 in.	3 1/4 x 4 1/4 in.	7d. each
122	6	3 1/4 x 5 1/2 in.	3 1/4 x 5 1/2 in.	7d. each

ENLARGING

SIZE	PRICE
4 1/2 x 6 1/2 in.	4/6
4 1/2 x 4 1/2 in.	4/6
6 1/2 x 8 1/2 in.	5/3
6 1/2 x 6 1/2 in.	5/3
8 x 10 in.	7/-
8 x 8 in.	7/-
10 x 12 in.	8/3
10 x 10 in.	8/3

COLOUR PHOTO-FINISHING

Kodachrome Film

Developing: Film price includes processing into full colour cardboard-mounted transparencies, and posting to owner.

Kodachrome Prints

From any 135 or 828 size positive colour transparency:

3S (3 1/2 x 3 1/2 in.) and
3R (3 1/2 x 5 in.) each 6 0

2R (2 1/2 x 3 1/2 in.), from 135
transparencies only 5 0

Mounts for 2 1/2 x 3 1/2 in. prints,
each 11

Mounts for 3 1/2 x 3 1/2 in., or
3 1/2 x 5 in. prints, each 1 0

Kodachrome Enlargements

5 x 5 in. and 5 x 7 in., each 18 6

Duplicate Transparencies: Size 24 x
36mm. from Kodachrome, Ektachrome or any similar transparency,
each 3 6

Concession prices for bulk quantities if ordered at the SAME time from the SAME original transparency . . . }
4-49, each . 3 0
50-99, each 2 6
From one OR MORE originals, ordered at the SAME time, 100 or more, each . . . 2 2

Black-and-White Negatives:

Size 2 1/4 x 3 1/4 in. from any positive colour transparency, each 2 3

N.B.—When ordering Kodachrome Prints, Kodacolor Prints or Kodacolor Enlargements only the full transparency area, less a narrow masking margin all round, can be printed.

Kodacolor Film

Developing: C135, C127, C120, C620, C116, C616 and C828, per roll 8 6

Kodacolor Prints (from any colour negative) sizes:
3S (3 1/2 x 3 1/2 in.), each 3 6
3R (3 1/2 x 5 in.), each 4 0
2R (2 1/2 x 3 1/2 in.), from 135 size negatives only 3 0

Kodacolor Enlargements (from any colour negative) sizes:
5 x 5 in. or 5 x 7 in., each .. 15 6

Kodacolor Mailers:
Kodacolor Mailer DP 8: Developing and making eight Kodacolor Prints 3R size (3 1/2 x 5 in.) 36 6
Kodacolor Mailer DP 12: Developing and making twelve Kodacolor Prints 3S size (3 1/2 x 3 1/2 in.) 44 6
Black-and-White Super-size Prints from any colour negative 7

Kodak Ektachrome Film

Kodak High Speed Ektachrome Film

Developing by Kodak (for BOTH the above types of film):—NOT included in film price.
Kodak Ektachrome Prepaid Processing Mailers:
PE ROLL, for all Ektachrome Roll Films, each 14 0
PE 20, for all 35mm. 20-exposure Ektachrome Films, each .. 18 0
PE 36, for all 35mm. 36-exposure Ektachrome Films, each .. 1 8 0
(Mailers cover processing into full colour cardboard-mounted transparencies, and posting to owner.)

Developing by the User (both types of film):
Kodak Ektachrome Processing Kit E2, 1/2 gal. 2 8 9
Kodachrome Prints: As for Kodachrome film.

KODAK SUPER-SIZE PRINTS

Everybody likes good value, and surely this is it — big, sparkling, twice-size snapshots, made by Kodak on modern automatic equipment. For example, if your camera takes eight pictures on a 620 film you get eight big prints $3\frac{1}{2} \times 5$ inches in size. Why not have big, glossy Kodak Super-Size Prints made from your old negatives too? They're ideal for gifts and framing. Check the chart below for your film size.

PRICE: 7d. each.



Kodak Super-Size Print $3\frac{1}{2} \times 5$ ins.

from these three negative sizes



Film No.:

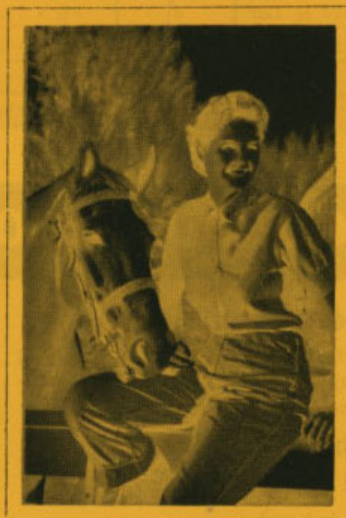
135

Exposures:

36

Neg. Size:

24×36 mm.



Film No.

127

Exposures:

8

Neg. Size:

$1\frac{5}{8}'' \times 2\frac{1}{2}''$



Film No.:

120 or 62

Exposures

8

Neg. Size:

$2\frac{1}{4}'' \times 3\frac{1}{2}''$

Film No.:

127

Exposures:

16

Neg. Size:

1 1/8" x 1 1/2"



Film No.:

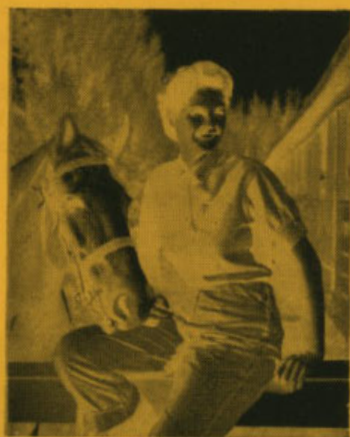
120 or 620

Exposures:

16

Neg. Size:

1 3/4" x 2 1/4"



from these two
negative sizes.

Kodak Super-Size Print 3 1/2 x 4 1/2 ins.



It can be made from both sizes of Neg. 127 or 120

Film No.:

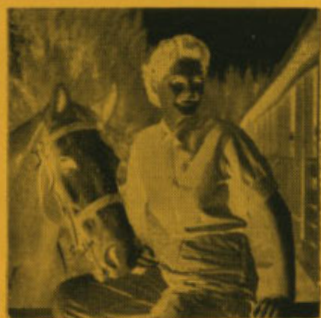
127

Exposures:

12

Neg. Size:

1 5/8" x 1 5/8"



Film No.:

120 or 620

Exposures:

Neg. Size:

1 3/4" x 2 1/4"



from these two negative sizes.

**Kodak Super-Size Print
3 1/2 x 3 1/2 ins.**

World-Famous Brownie Cameras . . .



BROWNIE FLASH II

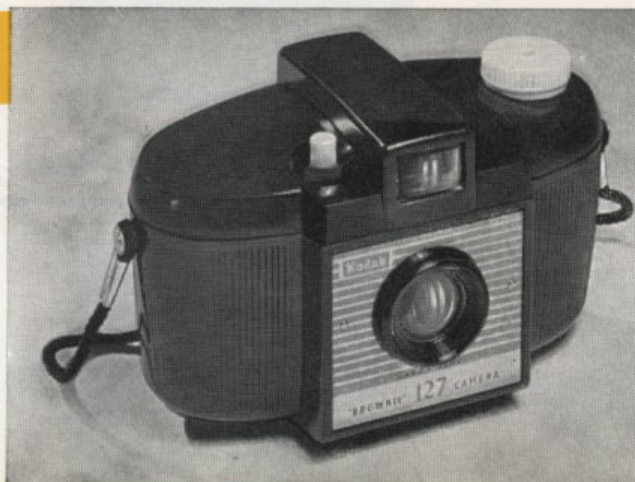
The whole family can use this exciting box camera, it's so simple and easy to operate. You can take flashsnaps, too, anywhere, day or night, by simply attaching the Brownie Flashholder. The high quality Kodet lens ensures a bright, sharp picture every time you press the button — and there is a built-in portrait lens for close-ups at five feet. The dependable Kodak rotary shutter has instantaneous and brief-time settings and is coupled to a modern push button release designed to minimise the possibility of camera movement. The Flash II is finished in smart black leatherette and has two large viewfinders for horizontal and vertical pictures. It loads with Kodak 620 film for eight pictures.

PRICE: £3.3.9

BROWNIE 127 MODEL II

A smartly designed up-to-the-minute snapshot camera that is simple and dependable in use. It has an all-moulded body in glossy black plastic, smart etched-metal nameplate, large built-in optical eye-level viewfinder, dependable fixed focus Kodet lens, modern push-button shutter release, and strong neck cord. Loads with Kodak 127 film for eight pictures.

PRICE: £1.15.9



BROWNIE STARFLASH

Just right for picture taking anytime, anywhere. Enclosed optical eye-level finder shows picture subjects big and clear. Its flash reflector and battery case are built in — an integral part of the Brownie Starflash Camera. Uses low cost capless flashbulbs; requires only 2 Eveready 915AA Batteries. Handy exposure guide on back of camera shows correct subject distances for flash using Kodak Films.

Other outstanding features include: Double exposure prevention device; can be used with or without flash; easiest film loading ever; available in smart black plastic. Loads with Kodak 127 film for twelve pictures.

PRICE: £4.17.6





BROWNIE STARLET

The ideal camera for the beginner, the Brownie Starlet Camera takes all three — colour slides, black-and-white or colour snapshots, giving twelve pictures per roll of 127 size film.

It is so simple to operate — adjust the setting for the type of film being used, sight through the extra large optical eye-level viewfinder and press the button. The fast Dakon lens gives sharp, clear pictures you will be proud to display. The camera shutter is synchronised for use with the Kodak Supermite Flashholder (priced £1), which fits neatly on to the side of the camera. The shutter is set as the film is advanced — consequently, there are no double exposures. Complete with neck strap.

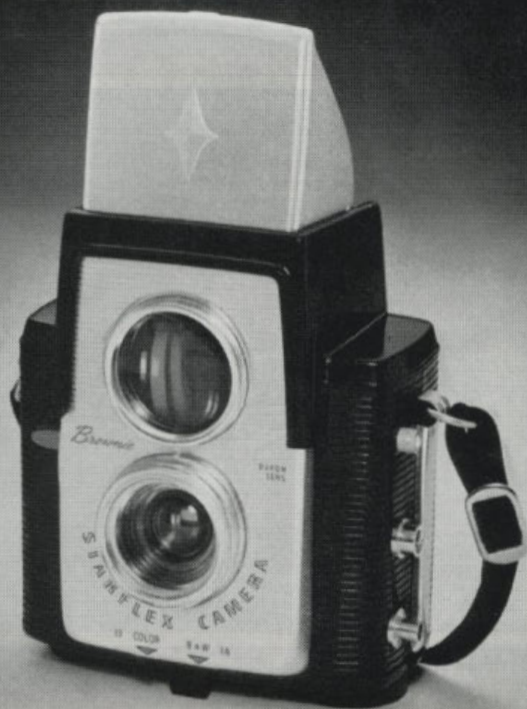
PRICE: £2.17.6

BROWNIE STARFLEX

The Brownie Starflex has large hooded viewfinder that shows your picture big before you snap it. Takes three kinds of pictures — colour snaps, black-and-white snaps, and colour transparencies. Takes flash pictures, too, with the Kodak Supermite Flashholder (price £1). Rugged and shock resistant, its features are: pre-focused lens, double exposure prevention, flash synchronisation, and carrying strap.

It's so light and compact that it fits easily into pocket or purse and it takes 12 pictures on a roll of 127 film.

PRICE: £5.7.6.



BROWNIE STARMETER

You'll be delighted with the clarity and excellence of every picture you take with the Brownie Starmeter. It features a built-in exposure meter which accurately measures the light to make sure you get a perfectly exposed needle-sharp picture every time. Other features are: a colour-corrected Kodar 3-element f/8 lens, double exposure prevention, optical eye level viewfinder and flash synchronisation. Loads with 127 film to give you 12 colour superslides, black-and-white prints, or colour snapshots per roll.

PRICE: £11.19.6.

BROWNIE CAMERA OUTFITS



STARLET OUTFIT

The ideal outfit for the beginner. Contains everything needed for day or night photography — Brownie Starlet Camera, Kodak Supermite Flashholder, two type 915 batteries, six flashbulbs and two black-and-white films.

Load the camera with the film supplied, attach the Flashholder, insert the batteries and a flashbulb and you are ready for picture making around-the-clock.

When you press the shutter release button the flash fires automatically at the right instant and provides all the light you want, where you want it, to ensure crisp bright pictures. The Brownie Starlet Camera also takes colour snapshots or colour slides by day-light or flash.

PRICE: £4.16.0



FLASH II OUTFIT

A complete ready-to-use hobby outfit for pictures in black-and-white super size, by flash or daylight. Superbly set up in a modern presentation pack, it's an ideal gift for any occasion. The outfit comprises: world famous Brownie Flash II Camera featuring high quality Kodak lens, built-in portrait lens for close-ups, reliable push button shutter release and sturdy metal construction; Brownie Flashholder; two batteries (type 915); five capless flashbulbs; two Kodak black-and-white 620 films; complete instructions.

PRICE: £5.10.0.



STARFLASH OUTFIT

A modern beautifully-presented outfit with everything needed for day and night snapshooting. It contains a Brownie Starflash Camera (for colour slides or black-and-white or colour snapshots), five flashbulbs, two batteries (type 915), and two rolls of black-and-white Kodak film.

Simple to use, all you have to do is load the camera with one of the films supplied in the outfit, insert two batteries, set the exposure lever to "B & W," insert a flashbulb and you're ready to go, ready to take fascinating flash pictures anytime, anywhere.

PRICE: £5.17.6.

Rolleiflex famous-name reflex cameras

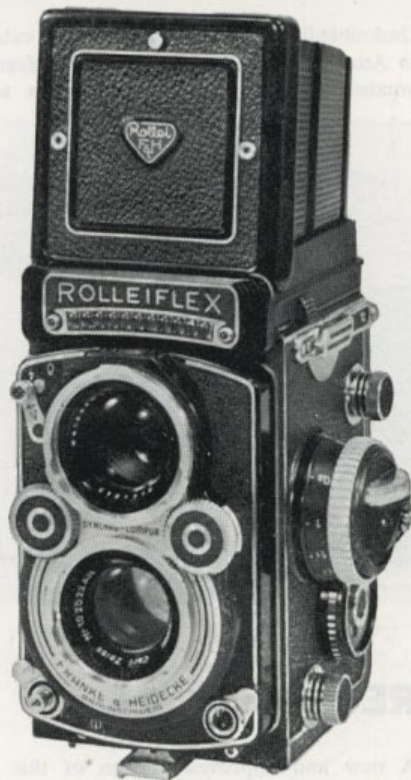
Rolleiflex and Rolleicord cameras — prized by millions of enthusiastic owners the world over for their outstanding quality and precision craftsmanship.

Rolleiflex:

Many models are fitted with a built-in photo-electric exposure meter for use with both reflected and incident light; Synchro-Compur shutter flash-synchronised for all types of flash and with speeds from 1 to 1/500 sec. and "B"; dual back for 12 pictures (2½ by 2½ in.) or 36 pictures (24 by 36mm.) using a Rolleikin accessory. Other outstanding features are: folding focusing hood for reflex or direct viewing; magnifying lens; automatic parallax compensation; accurate positive focusing; automatic depth-of-field indicator; automatic film winding, counting, and shutter setting; double-exposure prevention; click-stop shutter indicator; light values scale; self-timer; lens cap; cable release and carrying case.

Rolleicord VB:

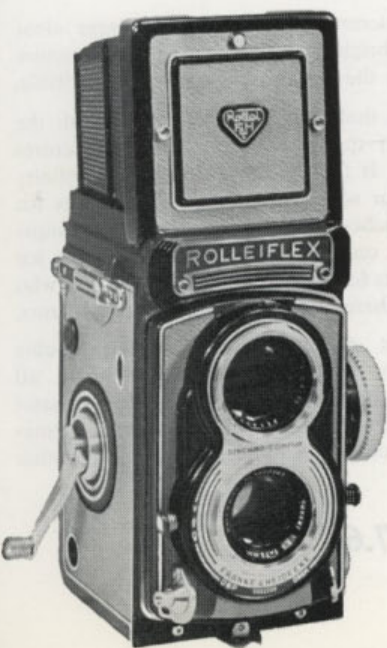
A fast high-performance reflex camera designed to meet the needs of the advanced amateur photographer. Fitted with a Synchro-Compur MXV shutter with speeds from 1 to 1/500 sec. and "B". Lens is a Xenar f/3.5 75mm. This new model Rolleicord VB features interchangeable counting devices and masks to permit the use of 35mm. Kodachrome colour film as well as the standard 120 black-and-white film for 12 (2¼" x 2¼") or 16 (1⅝" x 2⅛" or 1⅝" x 1⅝") exposures. In addition, it possesses most standard features of the Rolleiflex except the built-in exposure meter.



The Rollei System:

A most comprehensive range of Rollei accessories is also available to form a very efficient well-integrated system of reflex photography. The range comprises: Extension focusing hood; lens hood; Rolleigrid lens (for better viewing in poor light); Rolleiflex tripod head; Rollei desiccant cartridge; leather carrying cases (for cameras as well as lens attachments); Rollei filters (for black-and-white photography); Rolleipol filters (light polarising); Rollei colour conversion filters (for colour photography); Rolleinar close-up lenses; Rolleisoft diffusing lenses; Rolleimeter (optical rangefinder); Rolleimarin (for housing Rolleiflex f/3.5 for underwater photography); panorama tripod head; Rolleikin 35mm. film adapter; plate adapter; and Rolleiflash.

PRICES: Rollei-Magic f/3.5 75mm. Xenar lens with exposure meter controlled Prontomat S shutter	£66.0.0
Rolleicord VB with f/3.5 75mm. Xenar lens and Synchro-Compur MXV Shutter	£55.15.0
Rolleiflex 4 x 4, with f/3.5 60mm. Xenar lens and Synchro-Compur MXV shutter	£55.8.0
Rolleiflex, with f/3.5 F. 75 mm. Planar lens, with meter and Synchro-Compur MXV shutter	£122.19.0
Rolleiflex with f/2.8 F. 80mm. Planar lens, with meter and Synchro-Compur MXV shutter	£139.19.0
Rolleiflex "T" with 75mm. f/3.5 Zeiss Tessar lens	£85.0.0
All cameras are complete with carrying cases.				



Precision-made Kodak 35mm. cameras

COLORSNAP 35

Undoubtedly the best 35mm. camera value ever to come to Australia, it has all the necessary features needed for amateur 35mm. photography. It is a precision-built

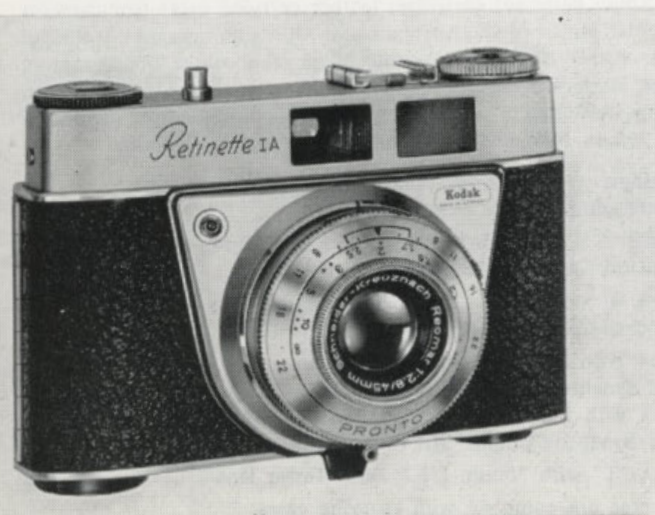


camera and is so simple to use that anyone can get good results with it. A rotating exposure control ring enables the lighting conditions to be 'dialed' direct, and there is a separate scale for flash. Exposure values are also marked for use with a suitable exposure meter. The focusing scale is marked from infinity down to 2½ feet, and also in 'Views,' 'Groups' and 'Close-ups.' The shutter release presses backwards instead of downwards, minimizing camera shake, and once depressed stays down until the film is wound on. However, there is a shutter reset lever for special effects, and for use in the event of flashbulb failure. A triple action lever wind advances the film, sets the shutter and the exposure counter. The lens is a 'Lumenized' f/3.9 Kodak 'Anaston' lens having front-element focusing from 2½ feet to infinity, and the 'Dakon' shutter is self-setting and flash-synchronized. Accepts all 135 20 and 36 exposure magazines black-and-white or colour. Complete with solid leather always-ready case.

PRICE: £13.5.0.

RETINETTE 1A

A new and improved version of this popular model. Precision built it combines simplicity with reliability at a price that is truly sensible and within the reach of all. It is fitted with a fast three element colour corrected 45mm. Schneider-Reomar f/2.8 lens and a four speed



Pronto shutter (1/30, 1/60, 1/125 and 1/250 sec.). It also has a "brief time" setting and a delayed action setting for self portraits.

One of its most interesting features is the large clear viewfinder with its bright-line frame. The exact picture area is shown while the surrounding area is still visible.

The Retinette 1A is flash synchronised for use with the Kodablitz Flashholder (price £2.17.6) for flash pictures anytime, anywhere. It focuses from 3½ feet to infinity and has provision for screw in supplementary lenses for close-ups of a few inches. The focusing ring has a unique "range dot system": one dot for close-ups, two dots for groups and three dots for scenes. Ideal for beginners who don't want to be bothered with fine focusing adjustments.

Other features are: automatic film counter; double exposure prevention; accessory shoe; lever wind; all metal construction with smart black leatherette and satin chrome finish. Accepts all 20 and 36-exposure magazines black-and-white or colour. Complete with solid leather always-ready case.

PRICE: £19.17.6



RETINETTE 1A CAMERA OUTFIT

A complete 35mm. camera outfit—everything needed for colour photography by flash or daylight indoors or out. Outfit comprises famous Kodak Retinette 1A Camera with f/2.8 lens and four speed shutter; always-ready carrying case; Kodablitz Flashholder; flashbulbs;

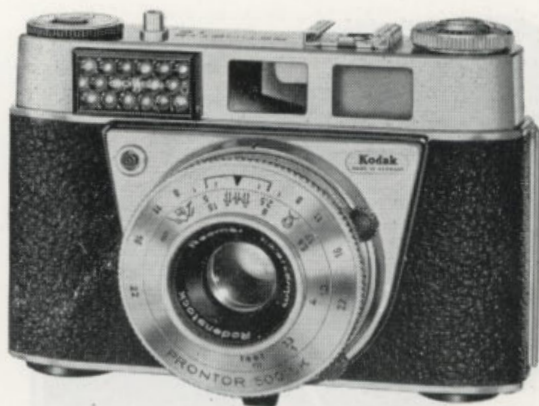
battery; Kodachrome II Colour Film and complete instructions for use. Attractively presented in a handsome box, it is an ideal gift to start someone on an exciting hobby.

PRICE: £26.12.6

RETINETTE IB

A medium-priced 35mm. camera having semi-automatic control for perfectly exposed pictures. Complete manual control is also possible for flash or other purposes. Correct light value is "read" by the built-in light meter and exposure is set by centring a needle seen in the "bright-line" viewfinder. The needle is adjusted by rotating the shutter or aperture rings. Fitted with a 45mm. Rodenstock Reomar f/2.8 lens and 6 speed Pronto LK shutter with separate "flash" and daylight settings ranging between 1/30 and 1/500 sec. Focusing from 3½ feet to infinity is simple with an easy to read depth of field scale. Delayed action is also provided. Complete with leather always-ready case.

PRICE: £34.



RETINA AUTOMATIC CAMERAS



RETINA AUTOMATIC I

Aim — Frame — Focus — all through the viewfinder. Press the button. Result — a brilliant, correctly-exposed picture every time. If the light is unsuitable, the shutter release will not operate and a "stop" signal flashes into the finder. Features include Retina-Reomar f/2.8 45mm. lens by Schneider-Kreuznach; Prontomat-S shutter for daylight or flash pictures; "bright-line" viewfinder; distance indication by light signals in finder; rapid film wind — one movement advances film, counts exposures and "cocks" shutter. Beautifully designed and complete with imported leather case.

PRICE: £55.



RETINA AUTOMATIC II

A fully automatic precision 35mm. camera that is simple to use, yet has all the features necessary to satisfy the most discriminating expert. These features includes all those of the magnificent Automatic I plus manual control that permits the lens aperture and shutter speed to be set in the conventional way, using the built-in exposure meter for guidance. It is fitted with a 4-element Retina-Xenar f/2.8 45mm. lens by Schneider-Kreuznach, and 6-speed Compur shutter to 1/500th sec. Other features includes depth-of-field indicator, cable release and flash sockets. With imported leather case.

PRICE: £57.10.0.



RETINA AUTOMATIC III

This is truly the ultimate in automatic cameras. Fully automatic — just aim and press the button. Lens settings can be operated manually if desired. The Retina Automatic III Camera includes all the features of the Retina Automatic II, such as the Retina-Xenar f/2.8 45mm. lens, a 6-speed Compur flash-synchronised shutter, and an automatic exposure lock with "stop" signal which operates if the light is insufficient for correct exposure. In addition, a coupled range-finder is fitted for precise measurement of distance. Complete with imported leather case.

PRICE: £69.18.6.



RETINA REFLEX III

You'll master even the most difficult photo situation with this new model of the famous Retina Reflex camera . . . it introduces dual photo-electric exposure control for greater operating ease and maximum versatility. For instance, you view and focus through the lens — see your subject as the lens does, and almost life-size. You can set exposure precisely without taking the camera from your eye. Simply centre the needle of the photo-electric exposure control between two brackets in the viewfinder — this is achieved by manually rotating a small wheel under the lens (this action automatically sets the correct lens opening for the subject being photographed.) You choose shutter speeds up to 1/500 for rapid action. Advance film with one flick of your thumb. You command distance and breadth of view with a wide choice of interchangeable Kodak Retina Lenses, from 28mm.

The Retina System

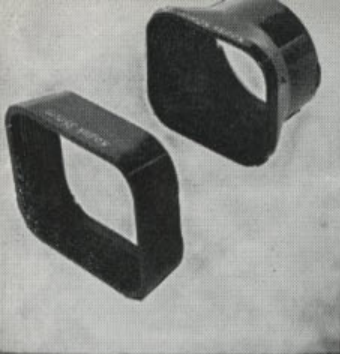
Your new Kodak Retina Camera is more than just a camera. The name "Retina" includes a complete family of aids — each one engineered specifically for precision Retina cameras and designed to keep pace with your photographic interests. They add up to a system which grows as your skills and interests grow. For instance, there's the full range of superb interchangeable

lenses, a variety of special lenses, rangefinders, camera stands, etc.; there are special viewfinders for fast action and right-angle shots; there's a special adapter kit for photo-micrography; plus a wide range of filters, lens hoods, etc. In short, the Retina system keeps you and your photography right up to date so that "you will never outgrow your Kodak Retina Camera."

PRICES:

(With Retina-Xenar 50mm. f/2.8 lens)	£106.17.6
(With Retina-Xenon 50mm. f/1.9 lens)	£124.17.6

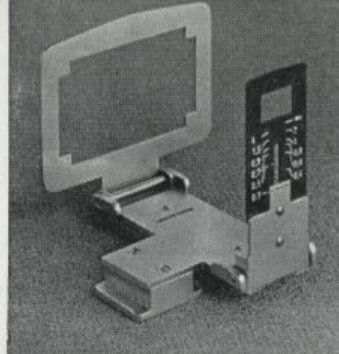
lenses, a variety of special lenses, rangefinders, camera stands, etc.; there are special viewfinders for fast action and right-angle shots; there's a special adapter kit for photo-micrography; plus a wide range of filters, lens hoods, etc. In short, the Retina system keeps you and your photography right up to date so that "you will never outgrow your Kodak Retina Camera."



Retina Lens Hood

The rectangular shape of the lens hood for the Retina range of cameras is particularly effective in screening off disturbing reflections. It is firmly fixed in front of the standard lens of the camera by means of a bayonet mount.

PRICES: Standard lens, 16.0.

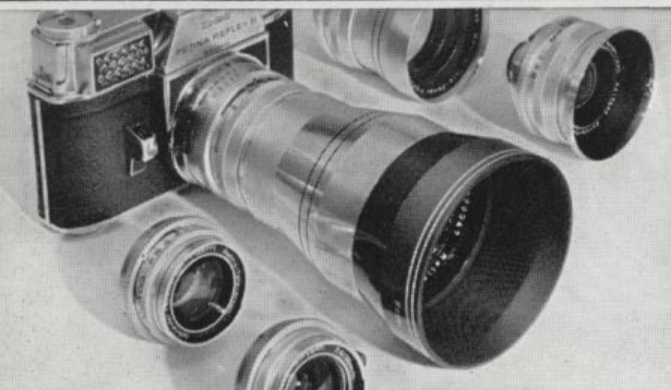


Retina Sports Finder

Specially designed for shooting moving subjects and quick-changing scenes such as sports pictures. In two models to suit standard and telephoto lenses — both have parallax compensation down to a taking distance of 12 in. and thus can be used for close-ups.

PRICE: £2.15.0 (in leather case).

KODAK RETINA ACCESSORIES



Retina Interchangeable Lenses

Designed to give an immense new scope to your Retina IIIS or Retina Reflex III. These new lenses replace the complete lens assembly to provide an efficient and perfectly matched unit for your camera. When in use with a Retina IIIS they provide a reflected brilliant frame in the finder to show the correct field corresponding to the lens fitted. When in use with a Retina Reflex III the "through the taking lens" viewfinder shows the exact picture area. Lenses available are:

Telephoto Lenses: 85mm. f/4 Retina Tele-Arton; 135mm. f/4 Retina Tele-Xenar; 200mm. f/4.8 Retina Tele-Xenar.

Wide Angle Lenses: 35mm. f/4 Retina Eurygon or 35mm. f/2.8 Retina Curtagon and 28mm. f/4 Retina Curtagon. Also available are interchangeable lenses to fit Retina IIC and IIIC cameras. Prices on application.

Retina Micro-Adapter

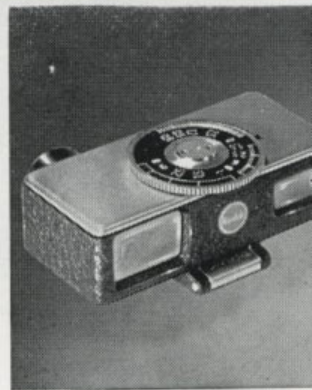
Joins camera and microscope together to form an excellent unit for photomicrography. Incorporates semi-reflecting prisms, plus a monitoring eye-piece to allow visual focusing, depth-of-field control, as well as inspection during exposure. The scale of reproduction is one-fifth of the visual image.

PRICE: £20.3.6.

Retina Close-Up Rangefinder Kit

Extends focusing down to 12 in. Kit consists of a super-imposed type of rangefinder combined with a parallax-correcting viewfinder, two supplementary lenses, and a case. Once the object is sighted the finder is adjusted until the two outlines fuse into one.

PRICE: £12.19.6.



Retina Document Copying Stand

Is a lightweight collapsible stand for copying books, documents, etc., up to 11½ x 8½ in. Must be used in conjunction with the N2 supplementary lens. Provision has been made for the fitting of supplementary lighting.

PRICE: £12.4.0.

Retina Table Stand

Designed especially for accurate close-up work — excellent for use with the Close-Up Rangefinder (and N lenses) or the Close-Up Attachment (and R lenses). Has rigid base, telescopic column, ball-and-socket head, and a right-angle head.

PRICE: £17.18.6.

Retina Close-Up Attachment

Together with its supplementary R lenses this attachment employs the focal-frame method of close-up photography of tiny subjects at distances of 6 to 11 inches. Four different sizes of subject areas covered by R lenses are: 4 x 6 in.; 3 x 4 in.; 2 x 3 in.; and 1½ x 2 in.

PRICE: £7.3.0.

Retina Stereo Attachment

Can be fitted to the standard lens of the Retina IIC or IIIC in a matter of seconds, making the camera "see" in three dimensions. It records two vertical images on a standard 35mm. frame which, when viewed, are three dimensional and amazingly life-like.

PRICE: £21.13.0.

Your valuable camera deserves the protection of a KODAK LEATHER CARRYING CASE



Left:

FOR BROWNIE STAR CAMERAS

Attractive pouch-type case with metal catch. Made of fibre board in tan finish. Special slots allow case to be fitted to a belt or may be slung from the shoulder using the straps provided.

PRICE: 16/-.

Centre:

ALWAYS-READY TYPE: Smart, convenient and safe — tailor-made to fit the camera. Simply open the flap and operate the camera without removing it from the case. Expertly finished in finest quality processed leather.

PRICES: Retinette £3.0.0; Retina £3.10.0.

Right:

BOX TYPE: Add years to the life of your box Brownie camera by protecting it from dust, moisture, shocks, etc., with one of these sturdy carrying cases. Made of top-quality processed leather to last a lifetime. With carrying straps and metal catch.

PRICES: Six-20 Brownie; Pig Skin type £1.0.0;

Not Illustrated:

Sling-type case for folding cameras, £1.9.6.

Carrying Case for Brownie 127 Camera, 7.3.

Brownie Gadget Bag

A handy inexpensive gadget bag for all your photo equipment. Finished in light tan it has a strong shoulder strap, a full-length zip fastener and metal stud feet for longer life.

PRICE: £1.15.0

Brownie Midget Gadget Bag, 14/9.

Kodak Junior De Luxe Shoulder Bag

Finished in soft natural tan; contains movable compartments for camera, meter, etc., while inside the lid is a zippered pouch for filters, etc. Has a buttoned-in soft chamois for last-minute cleaning. Dimensions, excluding exterior pouch, 8½ in. x 6½ in. x 4½ in.

PRICE: £5.11.6

Kodak Senior De Luxe Shoulder Bag

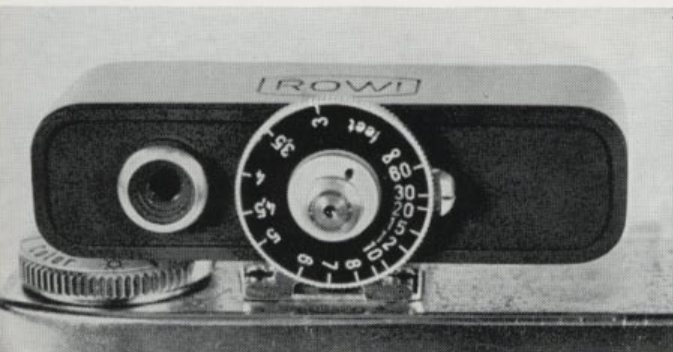
Made from solid hide that provides safety and protection for camera, accessories, etc. Has adjustable interior compartments, cleaning chamois, large outside pouch, zippered interior pouch, adjustable padded shoulder strap. Dimensions 11½ in. x 5 in. x 7½ in.

PRICE: £8.2.6

KODAK 15



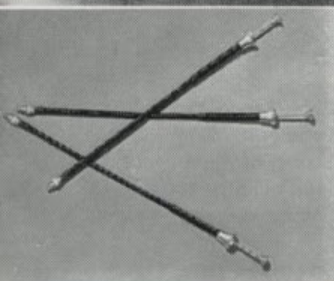
Aids to Better Picture Making...



Rowi Rangefinder

Permits distances to be measured quickly and accurately even under unfavourable lighting conditions. The clear double image stands out with bright contrast. The graduated scale reads from 3 ft. to infinity. Fits neatly into the accessory shoe of almost any camera. In stylish satin-chrome finish. Complete with leather case.

PRICE: £2.15.0.



Braided Cable Releases

A 'must' for time exposures — their use minimises camera shake, and makes for better pictures. Various lengths and threads.

PRICES: 3½ in., 4.4; 6½ in., 5.6; 10 in. 6.6.



Austral Lens Cleaning Tissue

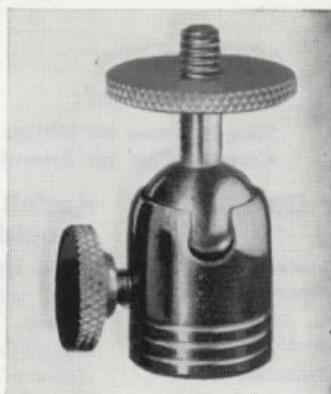
Finest quality white velvety-soft tissue that will not damage the surface. In books of 10 sheets.

PRICE: 6d.

Rowi Ball and Socket Tripod Head

The ball and socket enables the camera to be tilted to almost any angle, thus facilitating subject selection and avoiding camera shake.

PRICE: £1.2.9.



Kodak Universal Flash Adapter

Combines with the inexpensive Brownie Flashholder to form a synchronised flash unit for use with most 35mm. cameras such as the Kodak Retinette. It slips into the accessory shoe on the camera.

PRICE: 12.6d.



Rowi Tripods

Rowi Roundax (close right): A sturdy, lightweight seven-section tripod constructed in quality brass. Reliable ball-and-socket head permits the camera to be tilted at any angle. **PRICE: £7.16.6.**

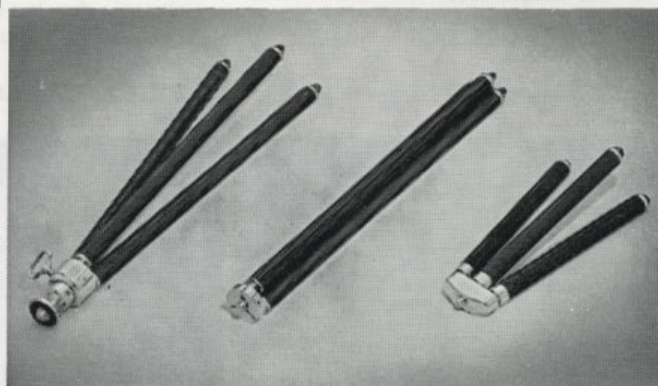
Rowi Turn (centre right): Features a reversible tripod head to provide either ¼ in. or ⅜ in. thread, accomplished simply by turning over tripod legs.

PRICES: 4-section brass, £6.5.0; 3-section nickel, £3.6.0; 4-section nickel, £3.13.6.

Rowi Flat (far right): Compact seven sections telescope down to nearly pocket size. Made from quality brass and finished in chrome with ribbed outer tubes.

PRICE: £7.13.0.

Rowi Table for table-top photography. **PRICE: £2.1.9.**



Aids to correct negative exposure . . .



PALEC PE3

Exposure Meter

Designed for use with still, movie, and colour photography by either "incident light" or "reflected light". The PE3 is extremely sensitive to all lighting conditions — incorporates two brightness ranges which adjust themselves automatically whether the light is bright or very dull. So easy to use, too — requires only two adjustments to give a direct exposure reading: (a) Set the ASA film speed index; (b) Align the cursor arrow over the cell needle. The exposures are then read from the scales by either: (a) the shutter speed and f. number system; or (b) the light values system. For incident light readings, the baffle is snugly stored into the meter body and can be readily fitted over the photo-electric cell. Other important features are: shock - resistant meter movement; extreme sensitivity embraces shutter speed readings from 60 seconds to 1/1000 second, and f. stop numbers from f/1 to f/32; shutter speed scales follow the modern trend in calibration (1/30, 1/60, 1/125 second); large easy-to-read figures on all scales; of strong, compact, light-weight construction — weight 5½ oz.

PRICE: £12.4.6.

KODALUX

Exposure Meter

Beautifully designed and craftsman constructed to last a lifetime. For use with colour or black-and-white, still or movie films. Simple to use — once the film speed is set, a knurled ring is rotated until two arrows coincide. All combinations of lens openings and shutter speeds are shown on an easy-to-read scale. Light values are also shown.

Designed primarily to slip into the accessory shoe of Retina and other 35mm. cameras, it can also be used in the solid hide case supplied. An ingenious incident light shield is also provided.

PRICE: £11.17.0.



Kodak Lens Attachments make your camera a better camera

Kodak Adapter Ring

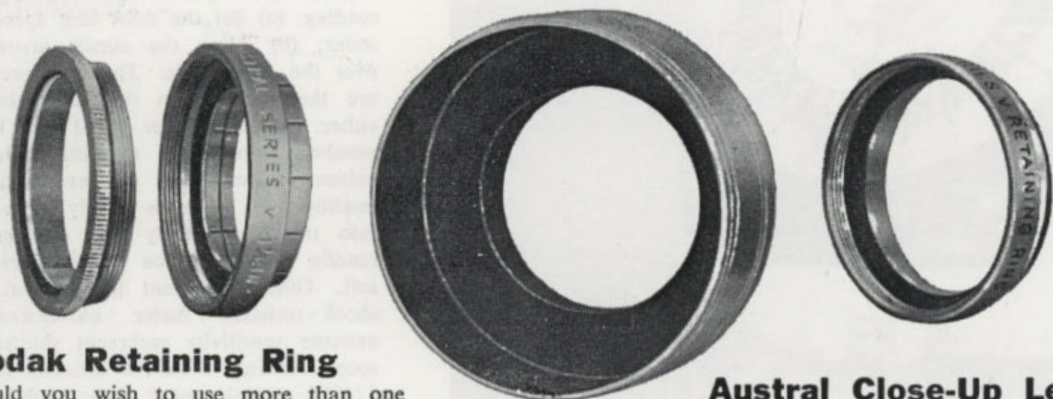
The basic unit to widen the scope and efficiency of your camera — permits the ready exchange of numerous unmounted filters and auxiliary lenses. Comprises two parts: an adjustable Adapter Ring and a Ring Insert — each accurately made in strong, lightweight metal alloy. Has slip-on mount with adjustable prongs.

PRICES: Series V, £1.3.6; Series VI, £1.4.3.

Kodak Lens Hood

Just as you would shade your own eyes from sun glare and reflections, so does the Kodak Lens Hood protect your camera lens. In use, the Kodak Lens Hood screws into the Kodak Adapter Ring, and replaces the Ring Insert of that unit. Strongly made of lightweight alloy.

PRICES: Series V, 16.0; Series VI, 16.5.



Kodak Retaining Ring

Should you wish to use more than one lens attachment for one exposure — say a filter, a close-up lens and a lens hood — the Kodak Retaining Ring becomes the “connecting link” to bind all these units into one complete assembly. Inside and outside threads ensure a safe, snug fit.

PRICES: Series V and VI, 7.6d.

Austral Close-Up Lenses

(Not illustrated.) Slip one of these handy lenses into a Kodak Adapter Ring and you'll have a new field of picture-making just waiting for your camera — this includes portraits of people and close-up photography of animals, flowers, etc. Austral Close-Up Lenses are made from fine quality glass in three degrees of magnification (+1, +2, and +3). Sizes available are 32mm. (to fit Series V Adapter Ring) and 42mm. (to fit Series VI Adapter Ring).

PRICES: 32mm., 10.6; 38mm., 10.0; 42mm., 11.1.

SERIES V		SERIES VI		SERIES VII		SERIES VIII	
19mm (3/4 in.)	20.5mm (7/8 in.)	22mm (7/8 in.)	23.5mm (1 in.)	25.5mm (1 in.)	26mm (1 1/8 in.)	27mm (1 1/8 in.)	28.5mm (1 1/8 in.)
30mm (1 1/8 in.)	31.5mm (1 1/8 in.)	32mm (1 1/8 in.)	33mm (1 1/8 in.)	35mm (1 3/8 in.)	35.5mm (1 3/8 in.)	37mm (1 3/8 in.)	38mm (1 3/8 in.)
39.5mm (1 5/8 in.)	41mm (1 5/8 in.)	42mm (1 5/8 in.)	42.5mm (1 5/8 in.)	44.5mm (1 7/8 in.)	46mm (1 7/8 in.)	47.5mm (1 7/8 in.)	49mm (1 7/8 in.)
50.5mm (2 in.)	52mm (2 in.)	54mm (2 1/8 in.)	55.5mm (2 1/8 in.)	57mm (2 1/8 in.)	58.5mm (2 1/8 in.)	60mm (2 1/8 in.)	62mm (2 1/8 in.)
63.5mm (2 1/2 in.)	67mm (2 5/8 in.)						

HOW TO ORDER KODAK LENS ATTACHMENTS

To obtain the diameter of a lens mount, lay the scale at left across the centre of the lens, with the arrow touching the outside edge of the lens mount. The line which touches the outside edge of the mount directly opposite then indicates the Kodak Adapter Ring size in inches and the series number of all Kodak Lens Attachments for that lens. If no listed size offers an exact fit, select the next larger size. The clamp prongs can be bent slightly to grip the mount.

Add punch to your pictures with

Austral Filters

Whatever your picture-making interests there is sure to be an Austral filter to help you . . . for filters dramatise pictures, give them a fresh sparkle and a new emphasis. As the name implies, the action of a filter is to retard light of certain colours—hence the tonal contrast is increased and the resulting picture greatly improved. In 31, 32, 38 and 42mm. sizes.

YELLOW: Just the filters to put punch into your pictures . . . they snap up the cloud effects by darkening the blue tone of the sky . . . they give certain degree of haze penetration in distant and mountain scenes. Available in light yellow and medium yellow.

YELLOW-GREEN: An ideal compromise between a yellow and a green filter. Here's what it will do for you: darken the sky for better cloud effects, penetrate distant haze, improve foliage and grass by rendering them lighter.

GREEN: For landscape, garden, and flower scenes where large masses of green foliage tend to dominate the picture—it lightens the greens and improves their detail; it will also darken the tone of blue sky and emphasise cloud effects.

ORANGE: For striking vigour and contrast particularly with panchromatic emulsions. Gives slight over-correction resulting in really beautiful seascapes, where it darkens both sky and water. Excellent for light architectural subjects against blue skies and gives greater penetration of haze than yellow filters.

RED: Its exaggerated renditions of darkened skies are truly spectacular, particularly when the elements are blue sky, white clouds, and strongly lit foreground.

BLUE: Gives improved tonal rendition and modelling by off-setting the excess yellow light normally associated with artificial lighting conditions.

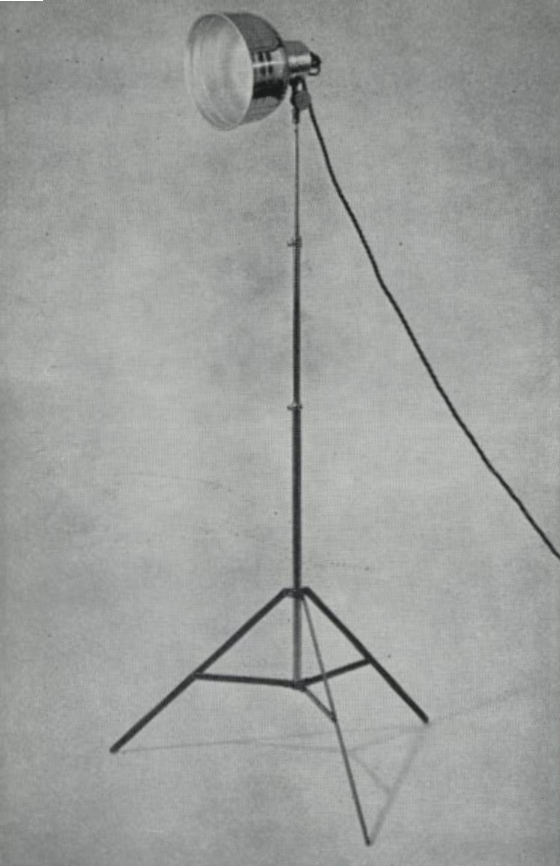
ULTRA VIOLET: Reduces excessive blue sky effects in Kodachrome slides caused by invisible ultra-violet rays in the atmosphere. It likewise reduces bluish haze in snow scenes and seascapes; adds warmth to colour slides exposed in open shade and on overcast days.

CONVERSION (Kodachrome II Type A to Daylight): Permits the use of Kodachrome II Type A (artificial light) film in daylight. Normal daylight exposures can be given with excellent results.

PRICES:

32mm. (light yellow, medium yellow, light green, yellow-green, orange, blue and ultra-violet)	11.9
32mm. red	14.0
32mm. conversion Type A—Daylight	15.3
42mm. above colours	13.6
42mm. red	15.9
42mm. conversion Type A—Daylight	18.9





Floodlighting Equipment

to help you make fascinating indoor night snapshots at home

Barton Single Unit Reflector

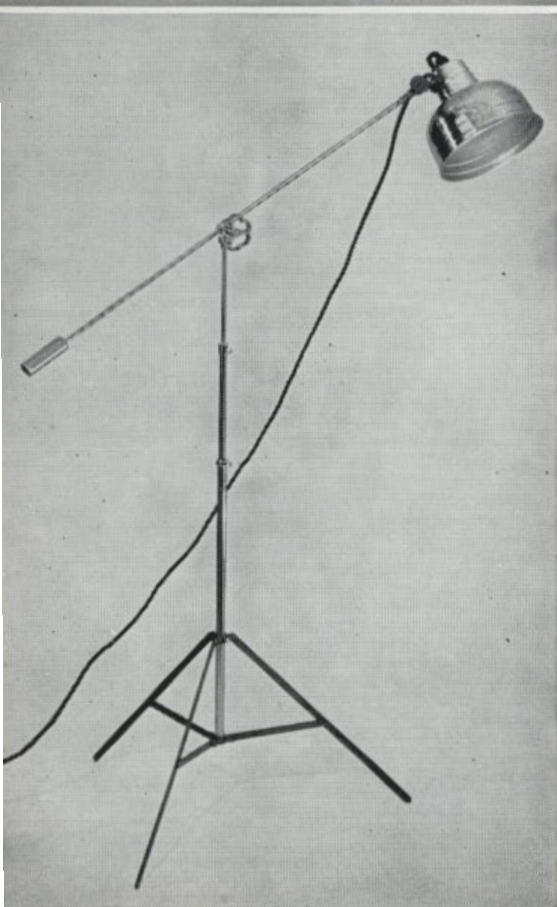
An ideal all-purpose lighting aid for around-the-clock picture-making; is designed to bring the utmost simplicity to indoor photography. Of sturdy, light-metal construction throughout, with triple extension stand and folding tripod legs. The reflector is complete with screw socket fittings, six feet of flex and 3-pin plug. Additional reflectors on extension arms may be attached.

PRICE: £8.18.0.

Barton Junior Boom Floodlight

A versatile lighting unit for the more advanced enthusiast. Ideal for both stills and movies, the boom permits lighting from overhead for modelling, etc. Comprises an all-metal collapsible stand with folding tripod legs, standard reflector and a counter-balanced boom. Complete with flex, plug and all fittings; it accepts screw-in type floodlight lamps.

PRICE: £11.10.0.



(A) Barton Spring Clamp Reflector

Will clamp on to anything thus permitting a full concentration of light in any direction, this by means of a ball-and-socket fitting. Fitted with B.C. lamp holder and built-in switch. Clamps are rubber-covered to prevent scratches.

PRICE: £5.12.6.

(B) Barton Floor Light

Consists of a single reflector equipped with a standard E.S. socket, mounted on an adjustable upright; has rigid tripod base with rubber tips. Supplied with 6 ft. of flex and a 3-pin plug.

PRICE: £5.3.6.

(C) Barton Junior Floodlight

Its adjustable stand and arm permit it to be directed wherever desired. It is compact, light in weight, and readily portable, with a highly-efficient all-metal reflector fitted with a B.C. lamp holder, flex and plug.

PRICE: £3.8.3

(D) Barton 500-Watt Spotlight

Because of its light weight and narrow beam angle, this spotlight is suitable for close-ups and special effects. Has well-ventilated lamphouse; uses 240-volt 500-watt E.S. Floodlight Lamp on an adjustable base.

PRICE: £18.12.0.



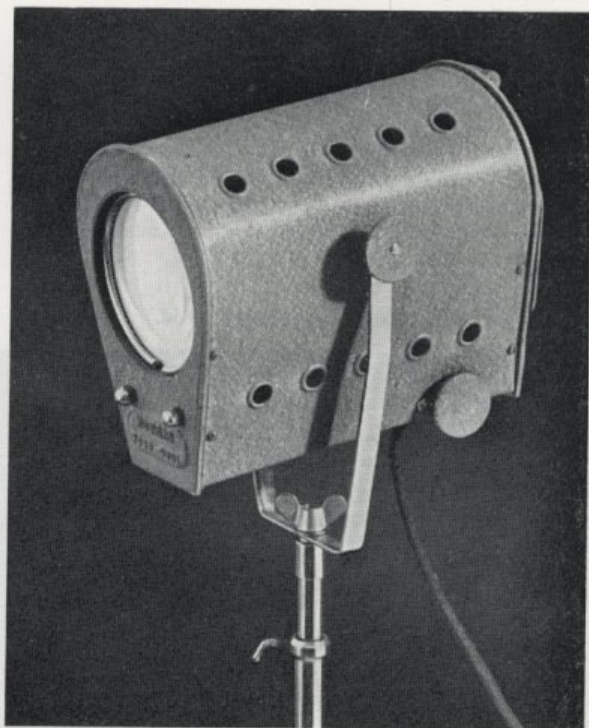
A



B



C



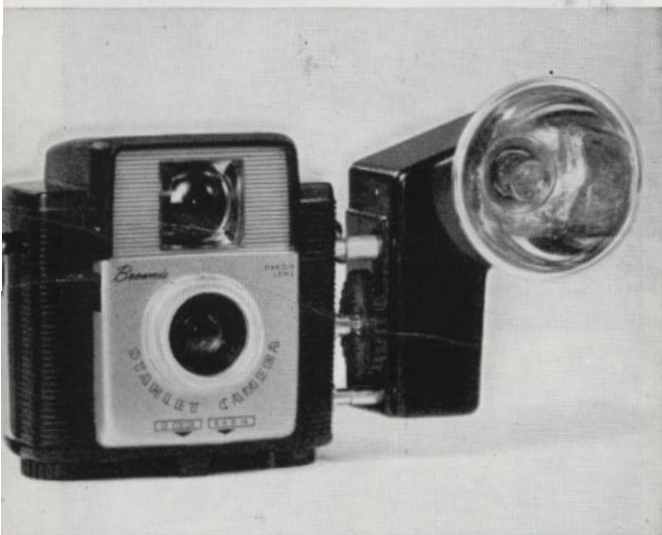
D

FLASH

is easy ...

FLASH

is fun ...



BROWNIE FLASHHOLDER

A simple inexpensive flashholder designed for use with Brownie flash synchronised cameras. It is attached direct to the camera by a contact pin and a knurled screw. Has four-inch diameter curved aluminium reflector and hinged plastic flashguard.

It accepts only the economical capless flashbulbs (e.g. G.E.C. No. 1 and PF No. 1); an ejector pin releases the hot bulb after firing. The body is sturdily moulded in black plastic; it is designed for use with two 915 size AA Eveready or similar batteries. Available separately is a special Kodak Adapter (see page 16) which enables the Brownie Flashholder to be used with Kodak Retina cameras with flash contacts.

PRICE: £1.7.6.

Adapter for AG1 flashbulbs. **PRICE 2/6d.**

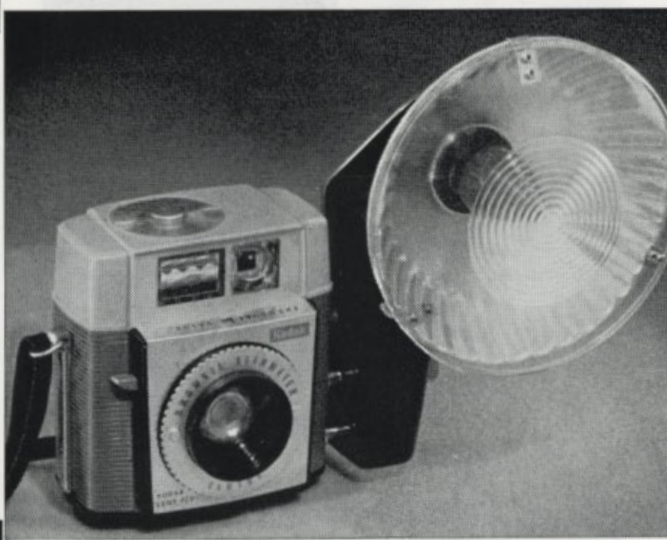


KODAK SUPERMITE FLASHHOLDER

The perfect combination of power and compactness. Using AG-1 (jellybean) flashbulbs and a highly efficient two inches diameter reflector it gives out as much light as the average four or five inch reflector when used with normal capless flashbulbs.

Only 3½ inches high it has a special fitting that enables it to be screwed directly on to Brownie Starlet, Starmeter, Starflex and Flash II cameras. It has a built-in exposure guide and a neat ejector button to prevent hot flashbulbs from burning fingers. Strongly made from a special moulded plastic it accepts two Eveready 915 batteries or, if desired, the special Kodalite Midget BC Flashpack, price 23/9, is available as an accessory.

PRICE: £1.0.0.



KODABLITZ FLASHHOLDER

A precision made flash unit designed primarily to slip into the accessory shoe of Retina and other 35mm. cameras, it can also be used on an extension bracket, or separated from the camera. Only four inches high, it is powered by a 15V. battery and capacitor which give a powerful and even light output. Accepts either capless (PF.1) or jellybean (AG.1) flashbulbs. There's a handy lever for ejecting hot bulbs after use.

Beautifully finished in two-tone grey, the Kodablitz is constructed of moulded plastic. A handy carrying case is provided to protect the flashholder from damage when not in use.

PRICE: £2.17.6.

Photographic Lamps . . .

to provide you with "artificial sunlight"
when you want it and how you want it

Flashbulbs



When neither daylight nor floodlight is available or suitable, the flashbulb is the obvious choice — it gives a brilliant flash of light when and where you want it without consequence of weather conditions.

Alternatively, the flashbulb can be used to supplement both flood and daylight where necessary. A wide range of bulbs is available from the tiny AG.1 jellybean to the popular capless AG.1 or PF.1 types. Blue coatings are available for use with Kodachrome II film (daylight type) when used indoors with flash.

PRICES:

AG.1 — Clear	1	2
AG.1-B — Blue	1	3
G.E.C.1, Capless	1	3
G.E.C.1Bs, Blue, Capless	1	4
G.E.C.5z Capless	1	7
Photoflux — PF.1 Capless	1	2
PF.1B, Blue, Capless	1	3
PF.5, Capless	1	7

Darkroom Lamps



Top quality lamps designed to give maximum illumination with perfect safety — made by the reliable house of Philips. Each has its special purpose in darkroom procedure — red

for developing orthochromatic films; green for inspection during development of panchromatic films (e.g., Verichrome Pan); yellow for developing Velox paper; yellow-green for Kodabromide paper. Available in a range of colours in sprayed or natural colour glass and fitted with B.C. bases.

PRICES:

Philips — B.C., Dark Red (Colour Glass)	8	1
B.C., Green (Colour Glass)	8	1
B.C., Green (Neon Filament)	9	4
B.C., Yellow (Colour Glass)	5	11
B.C., Yellow-Green (sprayed)	5	5

Floodlighting Lamps



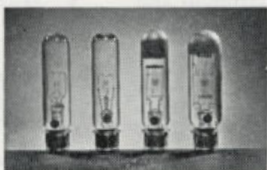
Probably the best and easiest lighting source for home picture making — they're so easily fitted to normal household units such as reading lamps, and yet give that ever-necessary brilliance.

Specially designed and made by B.G.E. and Philips for photographic use, these lamps give an intense light of high actinic value. Also available are mirror-backed lamps that effectively combine both reflector and light sources in one easy-to-use lamp.

PRICES:

Argaphoto — 500W, Type B	24	2
500W, Type BM	36	6
Photoflood — No. 1 250W, 2-3 hour	4	11
No. 2 500W, 6 hour	12	0
500W, 100 hour	24	5
Photolita — 250W, 2-3 hour	4	11
250W, mirror back	12	3
500W, 6 hour	12	0
500W, mirror back	21	0

Projector Lamps



Just as your eyes appreciate a good light for reading, so do your slides and movies project better with the correct lamp in your projector. All lamps are of high quality and are dependable — produced by the famous electrical houses of B.G.E., Philips and A.E.I. In the standard bases to fit all projectors.

PRICES:

50W, 8V, P15S	38	8
100W, 32V, A.S.C.C.	19	6
100W, 240V, P28	19	6
150W, 240V, A.S.C.C.	18	6
200W, 240V, P28	27	0
250W, 240V, P28	28	0
300W, 240V, P28	31	6
300W, 100V, A.S.C.C.	30	6
500W, 240V, P28	45	0
750W, 100V, P28	47	3
750W, 240V, P28	53	9
1000W, 100V, P28	52	6
1000W, 240V, P28	60	0

FLASH EXPOSURE DATA

How to take flash pictures...

WITH SIMPLE CAMERAS

Firstly: Ensure that the flash unit has fresh batteries, that the camera shutter is set at "1" (instantaneous), and that your flashbulb is firmly seated in the socket. If there are different settings use the one labelled EV13.

Secondly: Make sure that the distance of your subject from the flash unit is in accordance with the type of film and flashbulbs being used. For instance, if your camera is loaded with Kodak Verichrome Pan Film and you're using PFI flashbulbs, an ideal distance between flashholder and subject is 6-14 feet.

FLASH-TO-SUBJECT DISTANCE WITH BROWNIE CAMERAS

FILM	ASA SPEED NUMBER	AG.1 GEC 1 PFI	GEC 5Z PF5	AG.1B GEC 1B5 PF1B
VERICHROME PAN	125/5°	6-14 ft.	9-18 ft.	—
TRI-X PAN	400/7°	10-30 ft.	16-32 ft.	—
KODACOLOR	32/3.5°	5-8 ft.	8-11 ft.	—
EKTACHROME (IMPROVED)	64/4°	—	—	5-8 ft.

Thirdly: Just aim and press the button. The camera shutter will open and the flash will fire in synchronisation, giving you a sparkling, clear picture.

WITH ADJUSTABLE-TYPE CAMERAS

Any adjustable camera with an accessory shoe and standard flash cable socket can be used for flash work. One of the most economical ways is to use an inexpensive Supermite Flashholder which, with a Kodak Universal Flash Adapter, can be attached to your camera. The advantage of an adjustable camera for flash pictures is that the amount of light reaching the film can be varied, allowing a greater range of distances to be used. It is generally agreed that the best method of calculating correct exposures for flash pictures is to use Flash Guide Numbers. A table of Flash Guide Numbers appears at right, and they are used as follows: Choose the appropriate Guide Number for the type of film, flashbulb and shutter speed being used. Divide the Guide Number by the flash-to-subject distance in feet and the resultant answer is the aperture or *f*/number. For example: With Kodak Verichrome Pan Film and a PFI Flashbulb at 1/30 second shutter speed, a Guide Number of 180 is recommended. If your subject is 20 feet away from the flash, the aperture will be 180 divided by 20 feet = *f*/9. Use *f*/8 which is the nearest setting.

Note: Some cameras have two settings for flash, viz. "X" and "M." Check your camera instruction book to ensure that you use the correct setting. As a general rule, the "M" setting should be used for flashbulbs, and the "X" setting for electronic flash.

To ensure that all the light from a flashbulb is recorded on the film, a shutter speed of 1/25 or 1/30 second is recommended. Of course, faster speeds can be employed but with consequently diminishing guide numbers. Guide numbers for faster shutter speeds are given in the instructions packed with the film.

For full information on flash photography under unusual circumstances, see the Kodak Data book: "How to Take Snapshots by Flash." Finally, it is important to note that the Guide numbers are only *guides*. Many other influences affect correct exposure, such as colour and reflecting power of walls and ceiling, the colour of the subject, the

FLASH GUIDE NUMBERS FOR KODAK BLACK-AND-WHITE AND COLOUR FILMS

FILM	ASA SPEED NUMBER	SHUTTER SPEED	AG.1 PFI GEC 1	PF5 GEC 5Z	AG.1B PF1B GEC 1B5	PF24 FOCAL PLANE
VERICHROME PAN	125/5°	1/30	180	260	—	—
		1/60	180	240	—	220
TRI-X PAN	400/7°	1/30	320	500	—	—
		1/60	310	450	—	400
PLUS-X PAN	160/5.5°	1/30	200	300	—	—
		1/60	200	280	—	250
PANATOMIC-X	40/3.5°	1/30	100	160	—	—
		1/60	100	140	—	130
KODACHROME II DAYLIGHT	25/3°	1/30	—	—	60	—
		1/60	—	—	55	40*
KODACHROME II+ TYPE A	40/3.5°	1/30	80	120	—	—
		1/60	70	110	—	95
EKTACHROME DAYLIGHT	32/3.5°	1/30	—	—	70	—
		1/60	—	—	65	50*
HIGH SPEED EKTACHROME DAYLIGHT	160/5.5°	1/30	—	—	150	—
		1/60	—	—	140	110*
KODACOLOR	32/3.5°	1/30	80	120	—	—
		1/60	70	110	—	95

THE FILM SPEEDS SHOWN ABOVE ARE THE LATEST ASA RATINGS

* Use PF24/97 blue flashbulbs.

† With Kodachrome Type A Film and clear flashbulbs, use a Wratten Filter No. 81C.

size of flashlight reflector, and so on. Therefore, if you find that your results are consistently over or under-exposed, try varying the aperture one stop either way from that which you calculate by the "Guide Number divided by the flash-to-subject distance" formula. By this means, you will arrive at the correct exposure for your picture.

PROCESSING ACCESSORIES

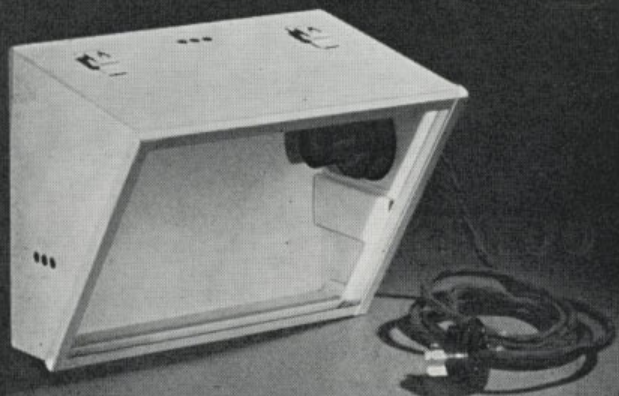
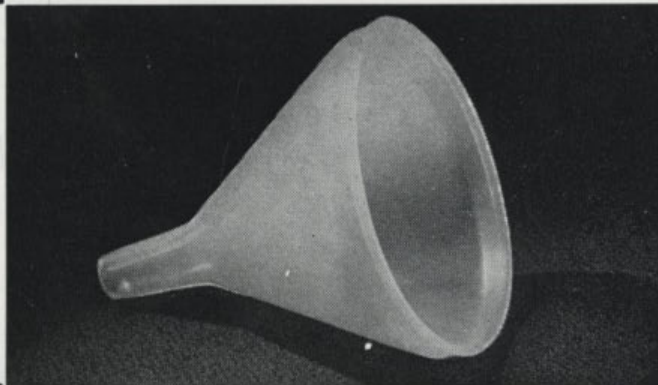
Alka Funnel (Type MW/81)

A handy time-and-trouble saver to add to your darkroom accessories . . . which means, no more spilt chemicals, no more frayed nerves when bottling solutions. It is all moulded in pliable plastic and available in various colours. The funnel mouth-piece is 3in. in diameter and terminates in a spout 1in. long by $\frac{1}{4}$ in. wide.

PRICE: 1.3.

PERFORMING THE 'DARKROOM MIRACLE' —

Today 'miracles' are few and far between but — there is still one miracle that is known to every practising amateur photographer. It's the supreme thrill (and one that never fails) he gets as he sees his picture "come up" in its developing bath. Make a list of the processing accessories you'll want, and soon you'll be enjoying the real satisfaction that comes from seeing your pictures "come up".



Austral Safelight Lamp

Correct darkroom illumination is vital to processing success — hence the Austral Safelight Lamp is a "must" for your darkroom. Designed mainly as a wall light, but provision has also been made for it to be hung from the ceiling or cupboards. Of all metal construction with spray finish, has light-proof ventilation to minimise overheating. Supplied with B.C. socket, flex, and 3-pin plug, but without safelight filter or globe. Made in two sizes to accommodate Wratten safelight filters.

PRICES: 5 x 7, £6.6.9; 8 x 10, £6.11.9.

Kodak Stirring Paddle (Close right)

A handy 3-purpose processing aid — for crushing chemicals, stirring solutions, and agitating prints. Eliminates the necessity of touching solutions and prints with hands. Length, 10in. Moulded in strong plastic.

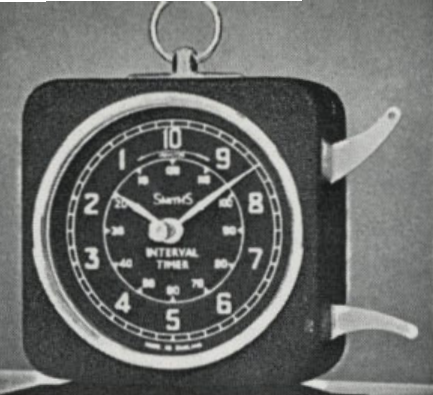
PRICE: 2.7.

Kodak Chemical Mixing Plunger (Far right)

The perforated plunger head mixes as it plunges, thus giving a more efficient mix than stirring. Length is 10in. Plunger head is 1 $\frac{1}{4}$ in. in diameter. In stainless steel buffed to a high polish.

PRICE: 9.0.





Smith's Interval Timer

Provides for accurate timing of processes from fractions of minutes up to two hours. The completion of selected periods is signalled by a loud alarm bell. **PRICE: £5.15.0.**

Graduates

A necessary aid in every darkroom for accurately measuring solutions. **PRICES: Plastic, 4 oz., 2.9; 20 oz., 6.6. Glass, 8 oz., 6.0.**



(A) Kodak Junior Film Clip

For safer and easier processing. Notch in top for quick, easy hanging on drying line. In stainless steel. **PRICE: 2.10.**

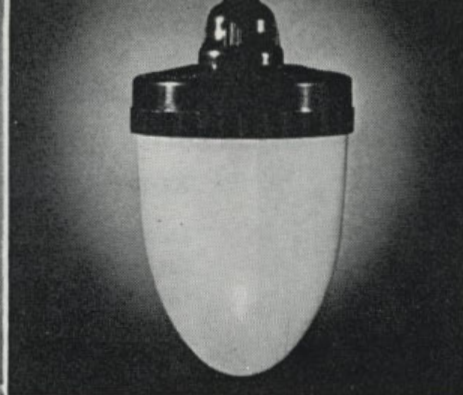
(B) Austral Print Forceps

Ideal for handling prints — no finger stains, no wet hands. Notched to rest on dish. **PRICE: 4.9.**

(C) Fotox Print Forceps

Heavy duty they will stand up to years of use. In two types, they're a must for every darkroom. **PRICE: Standard, 4.0;**

Spring type, 6.9.

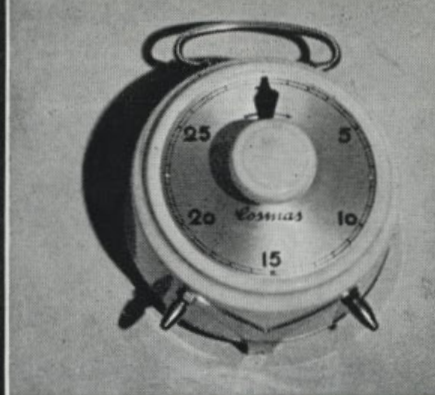


Brownie Safelight Lamp

Simply attaches to any household light fitting or reading lamp to give a perfectly safe safelight for processing Kodak papers. **PRICE: 15.6.**

Kodak Plastic Dishes

Ideal for enlargements. In two types — opaque and transparent. Impervious to acid solutions. 2½ in. deep with ridged bottom. **PRICES: 11 x 13, £3.3.0; 13 x 16, £3.14.6.**

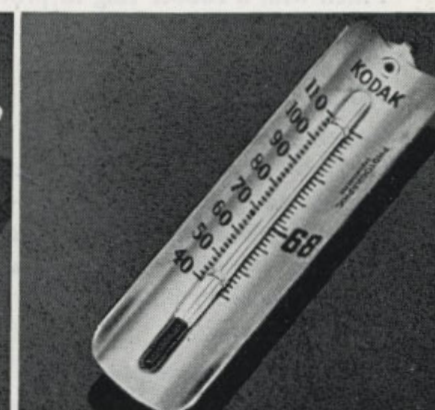


Cosmas Darkroom Timer

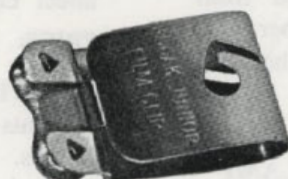
Three models — for timing up to 15, 30 and 60 minutes. Knurled knob winds clock mechanism and alarm. **PRICES: From £4.5.6.**

Kodak Thermometer

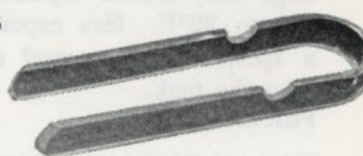
Degree readings, which range from 40-110 deg. F., are boldly marked and widely spaced. Metal casing is non-corrosive. **PRICE: 7.0.**



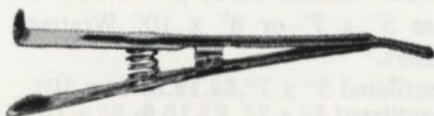
A



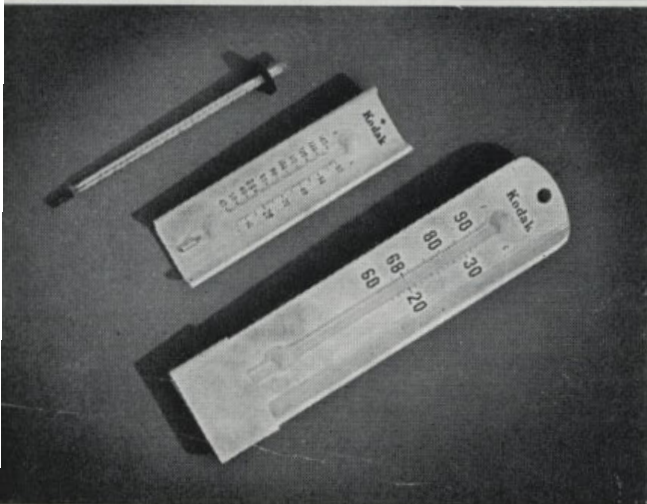
B



C



PROCESSING ACCESSORIES



Kodak F 140 Thermometer

Top: Provides absolute accuracy at 68° and within 1° at the extremities of the scale. Spirit filled, it is graduated from 30° to 140°F. Fitted with a rubber ring to prevent breakage, to provide for easier picking up and to prevent it sliding into dishes, etc.

PRICE: 18.0.

Kodak Dish Thermometer

Centre: Mounted on a chemical resisting plastic and graduated from 40°-140°F. Has a special expansion chamber should the thermometer be immersed in a solution up to 170°F. Mercury filled.

PRICE: £1.5.3

Kodak Tank Thermometer

Bottom: A heavy-duty thermometer for general tank use. Mounted on white plastic with large easy-to-read figures. Graduated from 60° to 90°F. Has expansion chamber and a special stainless steel device for hooking onto the tank.

PRICE: £2.8.0.

KODAK PYRAMID SAFELIGHT LAMP

Designed for overhead suspension, thus giving the maximum of light. Ventilated to minimise overheating, it is of metal construction and finished in white enamel. Made in two sizes to accommodate 5" x 7" or 8" x 10" Wratten Safelight Filters.

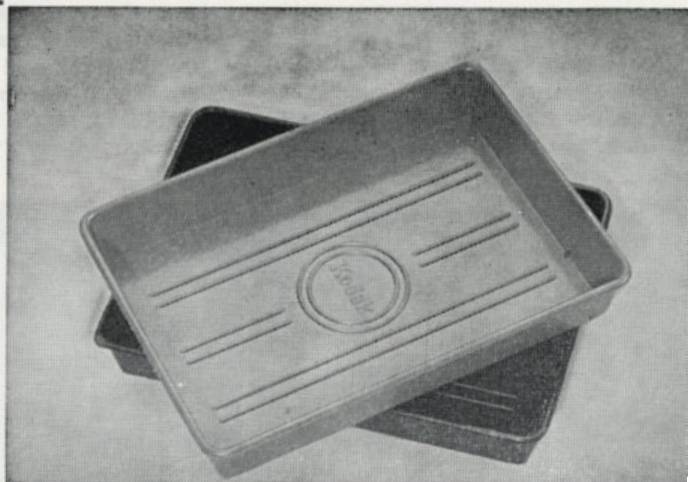
PRICES: Ventilated 5" x 7", £4.18.6; 8" x 10", £5.6.6; Unventilated 5" x 7", £3.10.9; 8" x 10" £4.1.9.

KODAK 28

KODAK ROCKER DISHES

Designed to permit a convenient rocking action for easy agitation during processing. Made from strong plastic for durability and ease of cleaning. Ridged bottom makes it easier to pick up prints. Handy pouring lip permits quicker re-bottling of solutions. Trays have sloping sides so as to nest for easier storage. 5 x 7-inch size in three colours — red, black and grey; 9 x 11-inch in grey only.

PRICES: 5" x 7", 3.9; 9" x 11", 15.3



NUTEX GLOVES

Specially made to protect your hands and finger nails from chemical action. They are designed for durability and long life. Will not affect chemical solutions.

PRICE: 3.11

PLASTIC APRON

Prevents chemical stains from ruining your good clothes. Thoroughly water and chemical proofed to withstand years of darkroom work. 33" long.

PRICE: 16.4

KODAK WRATTEN SAFELIGHT FILTERS

Designed for use with Kodak Pyramid and other popular makes of safelights. In series 00, 2 and 3.

PRICES: 5" x 7", 10.6; 8" x 10", 18.0.

Kodacraft Roll-Film Tank with 620-120 apron

Provides the modern, easy way to develop 620 and 120 roll films at home. Each film is simply rolled up in the apron in just a few seconds and placed in the tank which holds 16 oz. of solution. All moulded in tough plastic. Both tank and apron are resistant to all normal photographic processing solutions.

PRICE: £1.15.0

Replacement or other size aprons are available separately.

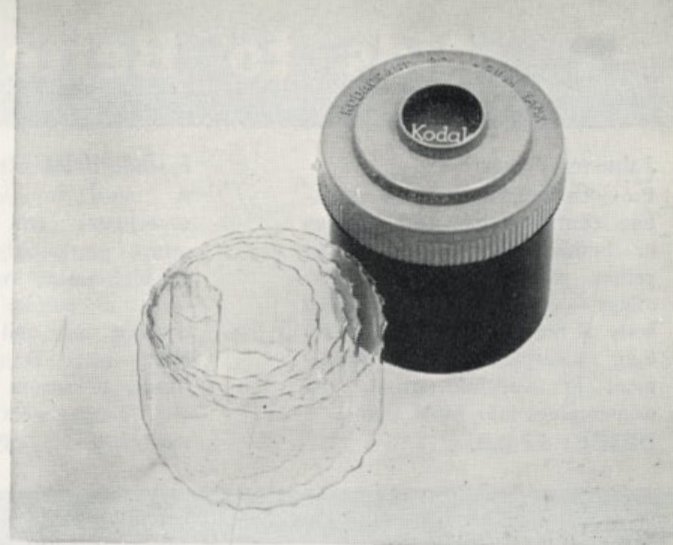
135, 12.0; 116-616, 10.0; 127, 7.6; 120-620, 7.9.



Kindermann 60 Developing Tank

This high-quality tank is particularly recommended for processing colour films as well as black and white. Both the tank and the reel are of approved high quality stainless steel and will accept film of 120 or 620 size. The reel is of the spiral wire type and is extremely easy to load. In colour processing the film need not be removed from the reel for the "flash" or second exposure. The use of stainless steel for colour work is now standard practice overseas, and the Kindermann tank strictly conforms to these standards. (Other size reels available, prices on application.)

PRICE: £8.14.3



Johnson Roto Developing Tanks

Roto — One

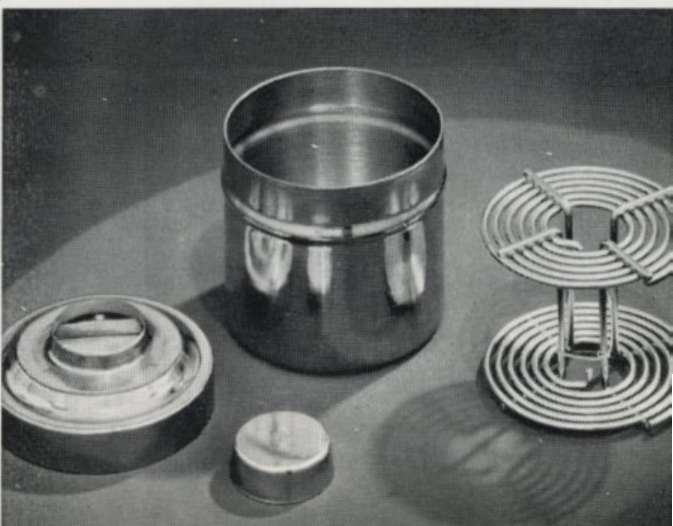
Has screw-in lid with removable polythene cap, permitting normal agitation of spiral film holder by means of a stirring rod as well as inversion to ensure thorough circulation of the developer. Spiral is adjustable to take 120, 620, 127, 828 roll films, or 20 exposure 35mm. films.

PRICE: £2.5.0.

Roto — Two

Larger version of the Roto-One with increased film capacity. Provision is made for agitation as well as rotary "camaction" movement of spiral by means of stirring rod. Features "Roto-Feed" loading and is adjustable to 116, 120, 620, 127, 828, 35mm. and 16mm. size films. Two 828 or 35mm. (20 exposure) films can be loaded at once without fear of overlapping during development.

PRICE: £2.12.6.



Aids to Better Printing . . .

Johnson Printer

Provides the means to make sparkling contact prints without fuss or bother. Made from smart yellow plastic with black trimmings—when switched on the body of the printer acts as a safe-light. Complete with an assortment of Kodaloid masks, the printer plugs into 240V mains.

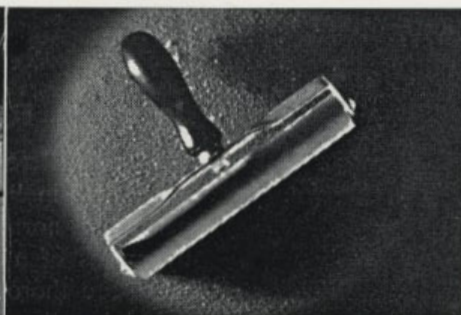
PRICE: £3.0.0.



Kodak Print Roller

A "must" for really successful squeegeeing and mounting of prints, particularly enlargements. Its high-quality rubber roller ensures a perfect even contact between print and mount. Has a strong metal frame and wooden handle to ensure long life. 4in. size. Larger sizes also available, see below.

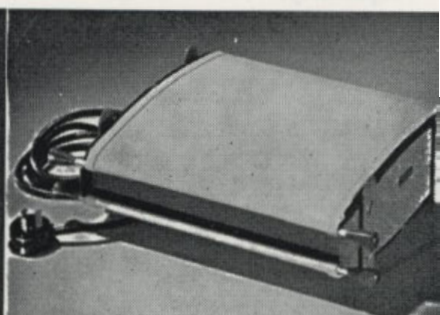
PRICE: 9.6.



Austral Amateur Glazer

Add to the attractiveness of your prints by giving them a mirror-like finish with this handy, efficient glazier. Will glaze prints as large as 8 x 10in. Of all-metal construction and complete with two large chromium plates, two strong white canvas aprons. Flex and plug extra.

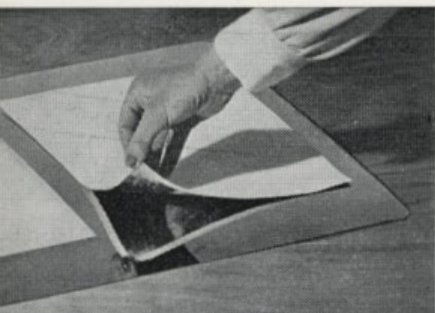
PRICE: £9.6.8.



Kodak Glazing Plates

Wet prints are simply placed face-down on the plates and firmly "ironed out" with a print roller or squeegee—when dry, they peel off as highly-glazed prints. Made of high-quality stainless steel.

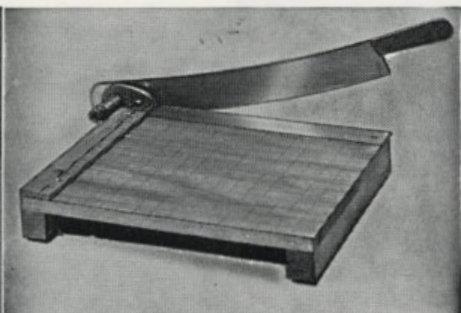
PRICES: 8 x 10in., £1.16.0; 14 x 20in., £3.0.0; 18 x 24in., £4.10.0.



Print Trimmers

Sturdy, accurate all-purpose trimmers. The board is marked in 1in. squares, and is squared to a fine steel cutting edge. Special spring tension take-up holds blade in alignment and prevents it from falling when in use.

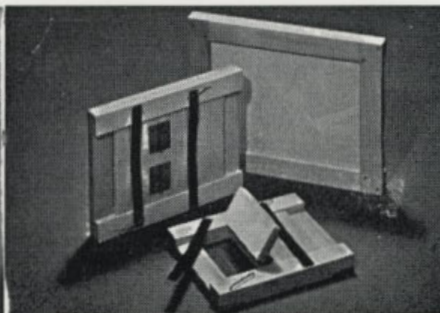
PRICES: Austral, 15in., £11.0.6; 24in., £19.10.0. Rowi, 7¼in. straight cut, £3.7.9; 7¼in. deckle edge, £4.15.3; 12in. straight cut, £8.14.0.



Kodak Printing Frame

A "must" for efficient printing—it provides a firm contract between negative and printing paper. Made of strong white wood with cloth-covered hinged back, and strong metal clamps.

PRICES: 1½ x 2¼in., 5.7; 2½ x 2½in., 6.9; 2½ x 3½in., 7.0; 2½ x 4¾in., 8.3; 3½ x 5½in., 8.9.



PRICES:

Kodak Blotter Book	2	3
Kodak Heavy Type Roller — 8"	18	6
12"	1	5
Barton Print-Washing Tank	£5 17	3

Kodaloid Printing Masks (Pkt. of 3)	3	0
Assembly (siphon)	2 16	0
Barton Print-Washing Hose		

KODAK

Precision Enlarger

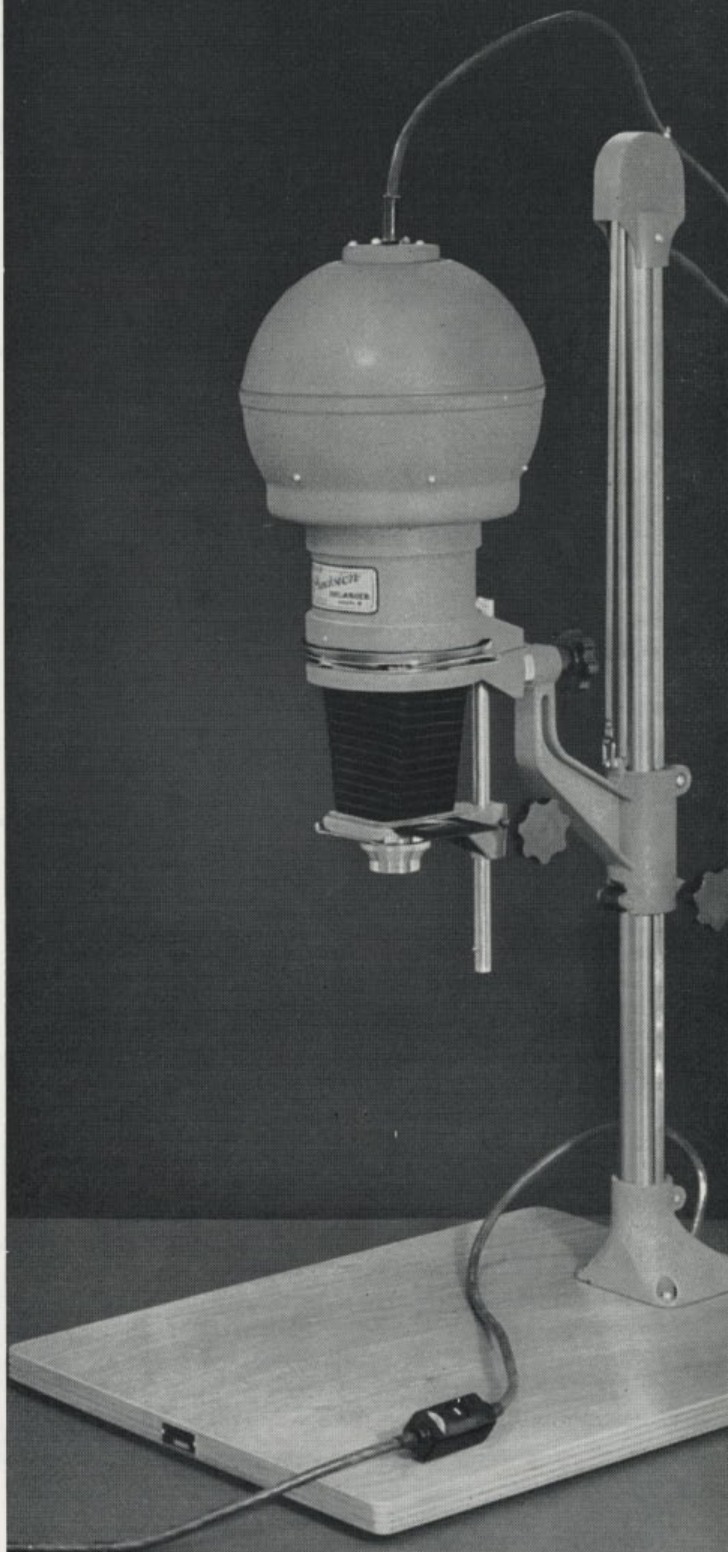
Together with its auxiliary equipment, the Kodak Precision Enlarger represents a carefully-planned programme of interchangeable components, designed and manufactured with precision to meet the most exacting demands.

The basic equipment is a highly-efficient vertical enlarger for visual focusing, which will handle, with equal efficiency, roll film, cut film and plate negatives in all sizes from 35mm. up to 2¼ in. by 3¼ in. In the design of this equipment special attention has been paid to the needs of the colour worker, and the enlarger is recommended for the exacting work of preparing colour separation negatives from Kodachrome colour transparencies.

Its features include: Resin-bonded plywood baseboard measuring 22in. x 17½in.; 32in. tubular steel column of 1½in. diameter; will accommodate all negatives up to 2¼ in. x 3¼ in. in size; the condenser head incorporates two 4½in. diameter condenser lenses and a disc of heat-absorbing, heat-resisting glass; a friction-wheel drive system permits extreme accurate focusing; complete with 240/250-volt 150-watt lamp, safety filter, flex and plug, toggle ON-OFF switch, two roll-film support cups, and a negative carrier with a set of six interchangeable Kodaloid masks. Complete with Kodak Ektar 100mm. f/4.5 lens.

PRICE: £124.18.0

Available also is a wide range of special Precision Enlarger accessories. Prices on request.



ENLARGING ACCESSORIES

Barton Foot Switch

A. An all-metal spring-type foot switch for use with enlargers, printing boxes, inspection lights, and all other types of lighting and other equipment employed for intermittent periods. Its use enables the hands to be left free for other uses. Well designed and sturdily made.

PRICE: £7.11.0.

El-an-De Masking Board

B. In a range of four sizes with heavy white enamelled base and all-metal black hinged frame. Adjustable light-gauge rules are easily moved or locked in any position by two large milled knobs. A movable bracket in the base permits margins of $\frac{1}{4}$, $\frac{1}{2}$ and $\frac{3}{4}$ in.

PRICES: $6\frac{1}{2} \times 8\frac{1}{2}$ in., £2.15.0; 8×10 in., £3.4.6; 10×12 in., £3.13.6; 12×15 in., £4.17.3.

Kodak Projection Print Scale

C. A handy aid that can save both time and wasted sheets of "test" paper. The print scale is placed over the sensitised paper on the easel. With a negative in the enlarger an exposure of one minute is made in the usual way. After development, the correct exposure time may be read directly from the best appearing sector on the enlargement. This information is then used to determine exposures of other negatives of similar and varying densities.

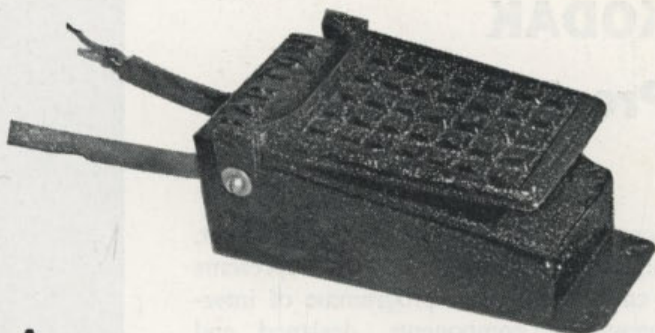
PRICE: 11.3.

Enlarging Lamps

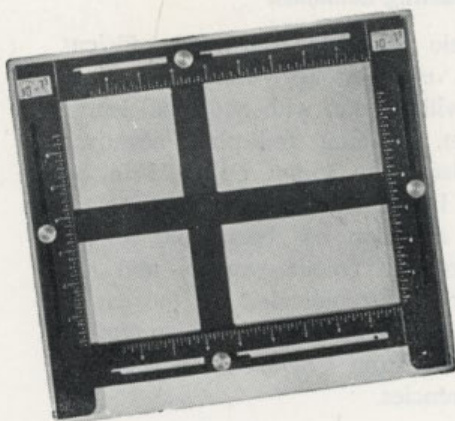
D. The heart of any enlarger is its lamp. A faulty lamp can cause expensive enlargement failures. A wide range of bases, voltages, and wattages are available. A few are listed below:

Photocrescenta

Watt	Volt	Base	Price
40	240	E.S. or B.C.	5.0
75	240	E.S. or B.C.	5.2
150	240	E.S. or B.C.	8.0
250	240	E.S. or B.C.	8.10



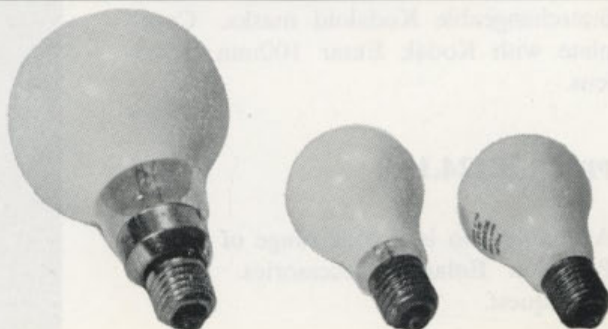
A



B



C



D



Kodachrome View Transparencies

★ *Australian Scenic Interest*

★ *Cartoon and Title Slides*

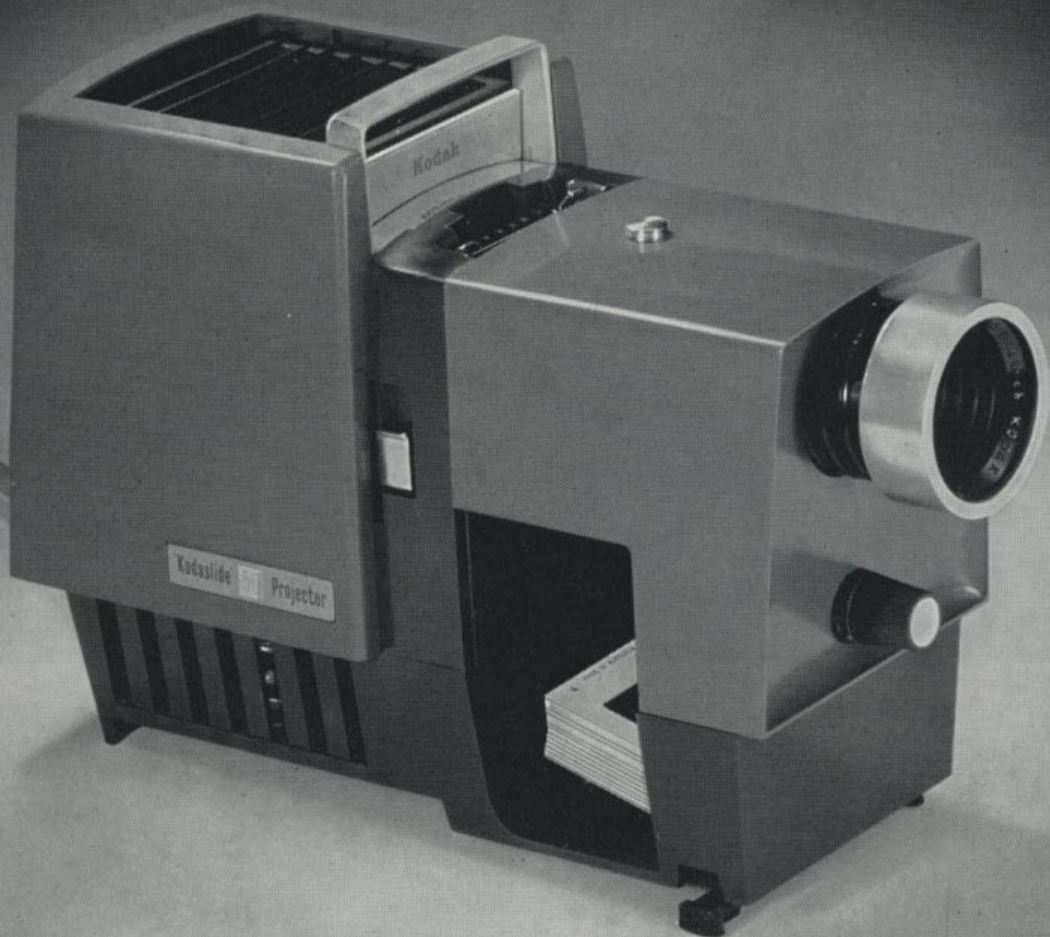
★ *Miscellaneous Views*

SYDNEY
MELBOURNE
BRISBANE
ADELAIDE
PERTH
CANBERRA
PICTURESQUE TASMANIA
SNOWY MOUNTAINS SCHEME
BLUE MOUNTAINS—JENOLAN CAVES
SOUTH COAST, N.S.W.
POPULAR SYDNEY BEACHES

Kodachrome View Transparencies are full-colour 35mm. natural colour slides mounted in 2 by 2in. cardboard mounts ready for projection. Nearly 400 different titles (listed in a separate catalogue) are available under the following subject groups:

PRICE: 4.6 each

THE GREAT BARRIER REEF
CENTRAL AND NORTHERN AUSTRALIA
AUSTRALIAN SURF LIFE-SAVING CARNIVAL
TOWNSVILLE
CAIRNS
THE AUSTRALIAN SCENE
AUSTRALIAN FLORA AND FAUNA
AUSTRALIAN ABORIGINES
ATLASES
MISCELLANEOUS



KODASLIDE PROJECTORS

Now you, too, can enjoy the thrill of owning your own projector and screening your own colour slides at home . . . at a budget price you can afford. With performance and reliability you would expect to find only in more costly projectors — the Kodaslide is truly the ideal projector for the amateur colour slide enthusiast. Check these features.

Fitted with a colour-corrected and coated 4" Ektanor f/3.5 projection lens. The maximum light is transmitted through the aspheric condensing lens to ensure edge-to-edge screen brilliance, sharpness and faithfulness of colour reproduction.

A smooth fingertip control elevates the projector. A spiral grooved lens barrel rotates for easy, accurate focusing.

A new easy to use slide feeding mechanism accepts slides from the top thus minimising image movement on the screen. After projection, slides drop into a collection box; a lever removes the last slide.

Accepts card or glass mounted 135 or 828 transparencies

or 127 superslides. Sturdily constructed of beautifully moulded green and grey plastic. Operates on 240V AC power supply.

KODASLIDE 40

(Illustrated.) Fitted with 240Volt 150 Watt convection-cooled lamp. By replacing lamp supplied with a suitable lamp it may also be operated at 110V power.

PRICE: £24.15.0.

KODASLIDE 50

Fitted with a 300 watt lamp and a powerful cooling fan.

PRICE: £29.17.6.

Accessories

Kodamat Rapid Slide Changer. Accepts 38 card or glass mounts for quick semi-automatic change.

PRICE: £4.3.6.

All leather quality carrying case. Fits both projectors.

PRICE: £6.17.0.

SLIDE PROJECTORS

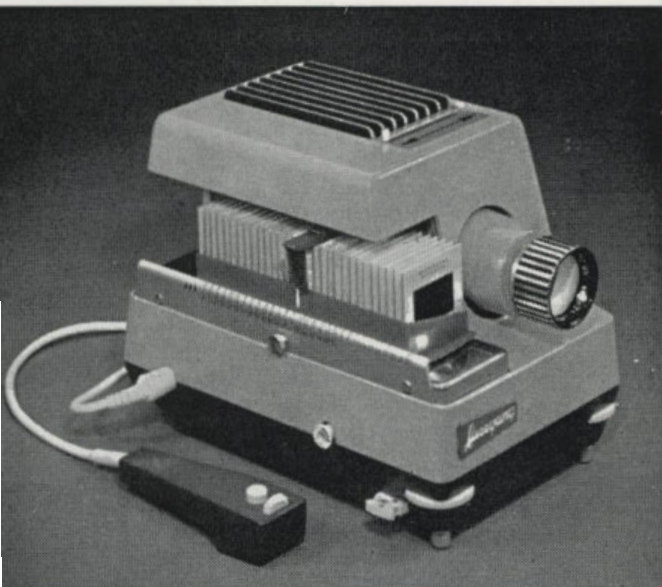
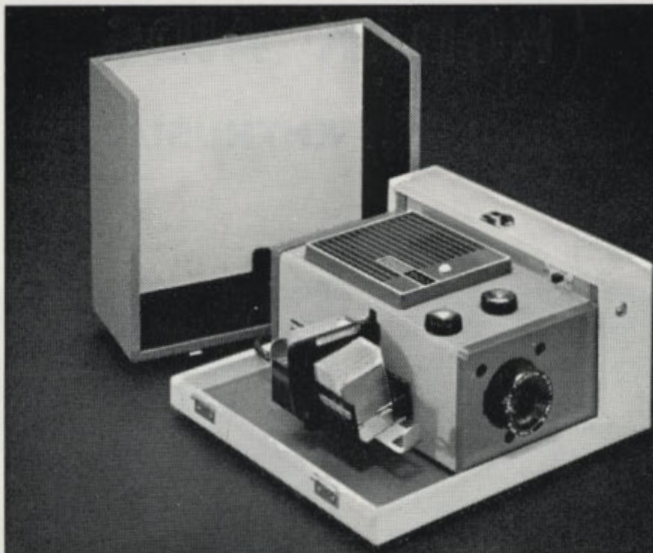
KODAK 500

Never before such brilliant projection from a projector so moderately priced. The Kodak Ektanar 4-inch f/3.5 lens, the 500-watt lamp and the close-coupled condenser system combine to give the maximum light output for big bright pictures on your screen.

Slides are protected against buckling by the highly efficient blower system and heat-absorbing glass. Fitted with the brilliant Kodak Readymatic Slide Changer that allows groups of slides to be shown in rapid sequence. This versatile projector will also accept as an accessory the Kodak Universal Slide Changer for use with slide magazines.

The Kodak 500 is simple to operate; two knobs control focusing and elevation. Long life is assured by its all-metal body and easy-to-clean parts. Finished in two-tone green and grey; it weighs only 15 lbs.

PRICE: £51.5.0.



FANTAX VOLLAUTOMAT

Precision built in the famous factory of Liesegang, the Fantax-Vollautomat combines power, automatic operation and modern styling. A highly efficient optical system and a 500 watt lamp provide brilliant illumination, while a built-in blower ensures that both slides and lamp are kept at the correct temperature. Slides may be changed automatically at 7½, 10, 15 or 30 second intervals, manually at the projector, or by remote control at the push of a button. Focusing can also be controlled by remote control. Of solid all metal construction, the Vollautomat is smartly finished in green enamel and supplied complete with remote control and a 30 slide magazine.

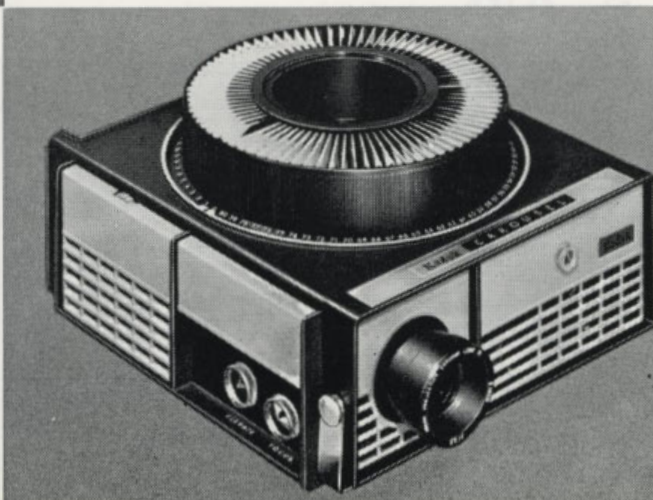
PRICE: £77.9.9.

KODAK CAROUSEL

The Kodak Carousel gets its name from the unique slide magazine which enables you to project a complete slide show without interruption to change slide trays! There is capacity for up to 80 slides and all are gravity fed to eliminate jamming. While the show is in progress, the operator just sits back and relaxes, for the Kodak Carousel is remotely controlled and can be pre-set to change slides at 5, 10 and 20 second intervals. Every average size screen can be filled with a big, bold and brilliant image, either with the standard 5-inch Ektanar f/3.5 lens or one of the five accessory lenses! A "hi-low" switch enables the lamp to be operated at either 500W or 300W.

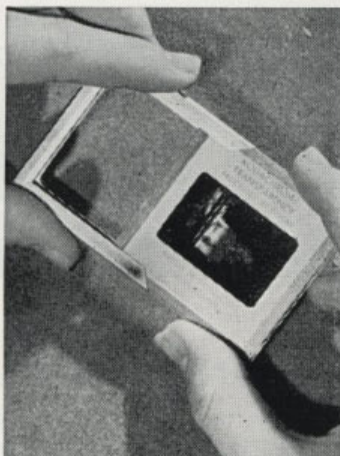
PRICE: £109.4.0.

KODAK 35



KODAK AIDS

FOR COLOUR ENTHUSIASTS



KODAK READY MOUNTS (GUMMED)

(Far left.) Ideal for replacing creased and "dog-eared" mounts. Easy to use — just place the transparency in position, moisten the pre-gummed surface, and fold the mount over. The result — a sturdy mount that will fit standard 2in. by 2in. projectors and viewers. In boxes of 50. **Price: 7.8.**

REGAL TRANSPARENCY MOUNTS

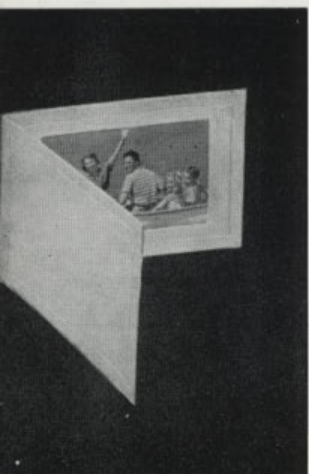
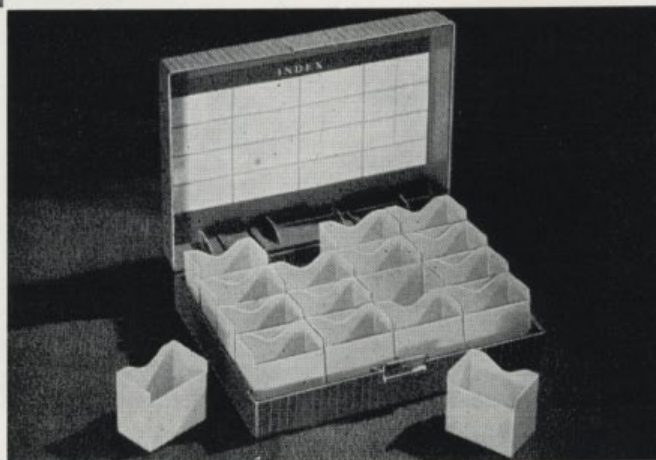
(Close left.) An economical, simple and permanent method of protecting your valuable Kodachrome transparencies. Each mount comprises two sheets of fine optical glass and a lightweight metal frame. To use: Simply insert the entire cardboard mount between the glasses and slide into the mount. In boxes of 20.

Price: 14.8.

KODASLIDE 400 FILE BOX

(Right.) The new trend in filing Kodachrome slides is by groups — and what better system than this ingenious outfit with its sixteen removable compartments? Excellent for use with automatic slide changers on projectors. Each compartment holds 20 to 25 cardboard mounts, or 400 in total (approximately 176 if glass or metal mounts). When you open the cover the compartments all tip back ready to lift out. The box itself moulded in tough attractive maroon plastic; the compartments in pliable yellow plastic. Complete with index in lid and strong metal catch. Supplied in strong protective carton for vertical storage in bookcase style.

Price: £1.15.0.



KODAK COLOUR PRINT MOUNT

(Far left.) An ideal way to feature much-treasured colour prints. Will readily stand up on your desk, as well as dress up a snapshot to be enclosed in a letter. Made of grained lightweight ivory board to accept one print. **PRICES: 2½ x 3½in., 11d.; 3½ x 5in. or 3½ x 3½in., 1.0d.**

PARKER COLOUR PRINT FRAME

(Close left.) Adds that "finishing touch" to Kodak colour prints when required as a gift or for home decoration. Of neat wood construction and finished in attractive ivory. Complete with slide-in back and two-way strut to accept 3½ x 5in. Kodachrome or Kodacolor prints.

Price: 7.10.



KODAK SLIDE KIT

For mounting your own slides. Gives your "special" slides longer life and greater protection against dust and scratches, etc. Slides can be mounted simply and quickly. Kit consists of 100 optical glass 2 x 2 inch slide covers, 50 Kodak 135 masks, 12½ yards of Kodak binding tape, 60 stickers for marking slides and a handy box that holds 37 of the completed slides.

Price: £1.5.0.

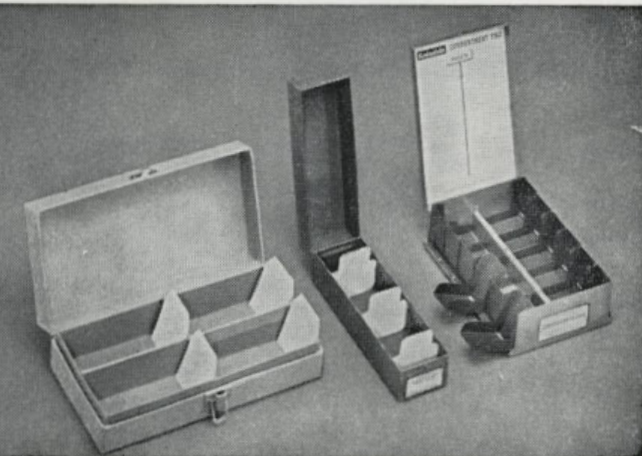
KODASLIDE POCKET VIEWER

(Far right.) Sturdy, compact viewer for 2 by 2in. slides — four times magnification. Has ground and polished optical glass lens. Size when folded — 2½in x 2½in. x ½in. Accepts cardboard, metal, and glass mounts. In sturdy plastic. **Price: 17.6.**

KODAK ILLUMINATED POCKET VIEWER

New colour-slide viewer folds compactly; has large "reading glass" lens for viewing with both eyes; four times magnification; powered by two Eveready 915 AA batteries (not included).

Price: £3.15.0.



KODASLIDE FLEXO FILE

(Left.) Gives low-cost storage for valuable Kodachrome slides. Holds up to 340 cardboard or 224 glass 2 x 2in. slides. In reinforced cardboard. **13.0.**

KODASLIDE FILE BOX

(Centre.) Robust all-metal construction keeps precious slides safe from knocks and dust. Accommodates up to 140 cardboard, or 55 glass slides. With five movable separators and press-spring catch. **£1.1.0.**

KODASLIDE COMPARTMENT FILE

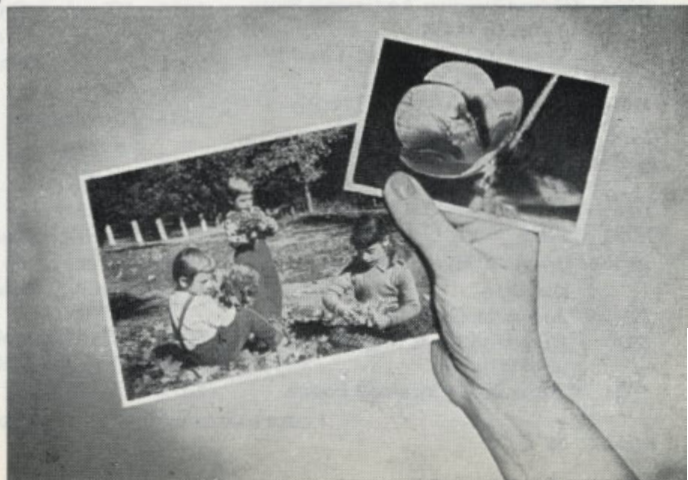
(Right.) It features twelve handy swing-out compartments for convenient access to groups of slides. Each compartment holds 20 cardboard or eight glass (or metal) slides. In hammergeglow finish. **£1.15.0.**

KODACHROME PRINTS

With Kodachrome Prints the beauty of your favourite positive colour transparencies can be reproduced as rich, natural glossy prints. By having such prints made you can share the beauty of your colour transparencies with others as well as enjoy them displayed in your own home. They can be made from any 135, 828 or Super-slide positive colour transparency. Available in three sizes from 828 and 135 transparencies — 2R 2½ x 3½in., 3R 3½ x 5in. or 5 x 7in.; and in two sizes from super-slide transparencies, 3S 3½ x 3½in. and 5 x 5in.

Prices: 2R, 2½ x 3½in., 5.0; 3R 3½ x 5in. and 3½ x 3½in., 6.0; 5 x 7in. and 5 x 5in., 18.6.

KODAK 37



See the World from Your Own Armchair . . .

VIEW-MASTER®

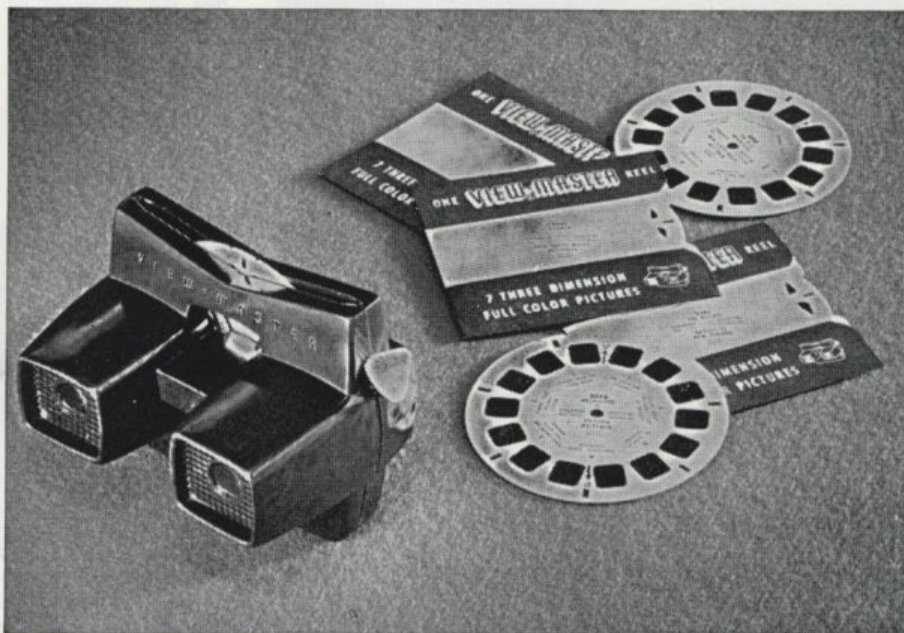
STEREO VIEWERS AND STEREO REELS

Seeing pictures in true three-dimension colour is an unforgettable experience. With View-Master Stereo Viewers and Reels a whole new world of beauty and adventure comes to life before your eyes. A flick of the finger changes the scene; accurately ground and polished lenses keep the image clear and sharp. Each reel contains seven delightful stereo scenes that are both entertaining and educational for young and old. You can build your own library of View-Master stereo reels from the comprehensive list below.

Also available is the View-Master Library Box to hold viewer and a wide selection of reels. Price £2.11.6.

View-Master Viewer, £1.15.0

View-Master Reels, each 5.8



CHILDREN'S STORIES

- FT1 Little Red Riding Hood.
- FT2 Hansel and Gretel.
- FT3 Jack and the Beanstalk.
- B314 *Jack and the Beanstalk (3 reels).
- FT5 Cinderella and the Glass Slipper.
- B313 *Cinderella (3 reels).
- FT6 Goldilocks and the Three Bears.
- B3071 The Three Little Pigs.
- FT7 The Three Little Pigs.
- 842A Donald Duck in Sky Hammock.
- B525 *Donald Duck (3 reels).
- B305 *Hans Christian Andersen's Fairy Tales (3 reels).
- B4721 Lassie and Timmy in The Run-away Mule.
- B474 *Lassie and Timmy (3 reels).
- B309 *Aesop's Fables (3 reels).
- B3092 Aesop's Fables, The Town Mouse and the Country Mouse.
- B321 Grimms' Fairy Tales (3 reels).
- B531 Bugs Bunny (3 reels).

AUSTRALIA AND NEW ZEALAND GENERAL

- B288 *Australia (3 reels).
- 5020 Kangaroo Hunt with Aborigines of Australia.
- 5021 *Australian Flora and Fauna.

AUSTRALIAN CAPITAL TERRITORY

- 5025 Canberra, Capital of Australia.
- 5026 The City of Canberra, A.C.T.

QUEENSLAND

- 5010 The Great Barrier Reef.
- 5080 Brisbane I.
- 5081 Brisbane II.
- 5085 Surfer's Paradise, Vacationland.
- 5086 The Gold Coast.
- 5090 *Green Island.
- 5091 *Tropical Crops and Coral.
- 5092 *Cairns and district.
- 5093 *Townsville and Magnetic Island.
- 5094 *Whitsunday Passage I.
- 5095 *Whitsunday Passage II.

SYDNEY

- 5001 Sydney I.
- 5002 Sydney II.
- 5003 Scenic Sydney.
- 5005 Sydney, the Beaches.
- 5006 Sydney Beaches and Surf Life-savers.
- 5008 The Blue Mountains I.
- 5009 The Blue Mountains II.
- 5015 Ski-fields of Mt. Kosciusko.

- 5016 Summit of Australia in winter, Mt. Kosciusko.
- 5030 Jenolan Caves I.
- 5031 Jenolan Caves II.

VICTORIA

- 5041 Melbourne I.
- 5042 Melbourne II.
- 5043 City of Melbourne I.

SOUTH AUSTRALIA

- 5121 Adelaide and vicinity.
- 5125 *Flinders Ranges.

TASMANIA

- 5241 Tasmania I.
- 5242 Tasmania II.
- 5243 *Tasmania III.
- 5244 *Hobart and vicinity.

WESTERN AUSTRALIA

- 5203 *Perth and Fremantle.
- 5209 *Timber and Gold.

NORTHERN TERRITORY

- 5161 Alice Springs.

NEW ZEALAND

- 5261 The Maoris of New Zealand.
- 5270 Rotorua, North Island.
- 5301 The Southern Alps, Sth. Island.

* REELS MARKED WITH AN ASTERISK ARE RECENT ADDITIONS TO THE RANGE.

BRITISH ISLES**ENGLAND**

- 1001 London I.
 1007 Changing the Guard at Buckingham Palace.
 1013 Windsor Castle, Royal Residence.
 1025 Shakespeare's Stratford-on-Avon.
 1040 Devon Scenes.
 1050 Cornwall Beauty Spots.

SCOTLAND

- 1200 Robert Burns' Country.
 1210 Highland Scenes.
 1220 Edinburgh.

WALES

- 1150 Wales I.

IRELAND

- 1320 Dublin and the Wicklow Hills.

EUROPE**AUSTRIA**

- 2320 Innsbruck.
 2325 Vienna I.

BELGIUM

- 1950 Brussels I.
 1951 Brussels II.

DENMARK

- 1850 Copenhagen.

FINLAND

- 2602 Helsinki.

FRANCE

- 1400C Popular Tourist Resorts.
 1401 Paris I.
 2680 Monaco and Monte Carlo.

GERMANY

- 1500A West Berlin.
 1565A The Rhine Rudesheim to Koenigswinter.
 1575B Germany II.
 1575C Germany III.

GREECE

- 2151 Athens I.
 2152 Athens II.
 2154 Athens and surroundings.

HOLLAND

- 1901 Windmill Land.
 1920A Tulip Time.

ITALY

- 1600B Scenes of Italy.
 1601 Rome I.
 1630 Venice.
 1655 Lake Como.
 2721 St. Peter's Basilica, Vatican.

NORWAY

- 2075 The Fjords.

PORTUGAL

- 1801 Lisbon I.
 1802 Lisbon II.

SPAIN

- 1700 Romantic Seville.
 1705 The Alhambra Palace, Granada.

SWITZERLAND

- 2000A Bern to the Rhine.
 2000X Geneva to St. Moritz.
 2001 The Matterhorn and Zermatt.
 2009 Interlaken Region.

SWEDEN

- 2125A Sweden I.
 2125B Sweden II.

U.S.S.R.

- 2800A Inside Moscow I.
 2800B Inside Moscow II.
 2800C Russia Today.

MIDDLE EAST

- 4000 Jerusalem, The Holy City.
 4055 Scenes of Jordan.
 4141 Damascus, Syria.
 4151 Scenes of Lebanon.
 4170A Iraq, Birthplace of Civilisation.
 4250A Iran, Arabian Night's Land.

AFRICA

- 3001 Capetown and Cape Peninsula.
 3100 Victoria Falls, Sth. Rhodesia.
 3300A Cairo and the Pyramids.
 3300B Land of the Nile.
 3900A In Darkest Africa—Tribal Rites.
 B618 Wild Animals of South Africa (3 reels).

ASIA

- 4300 Taj Mahal, Agra, India.
 4302 Maharaja's Festival, Mysore, India.
 4400A Bombay and South India.
 4400C Agra to Calcutta, India.
 4501A Ceylon, Indian Ocean.
 4551B Singapore, Malaya Peninsula.
 4872 Mount Fuji and rural scenes, Japan.
 4810 Hong Kong Colony.
 4814 Victoria Island, Hong Kong.
 4900X People and Festivals, Hong Kong.

PACIFIC ISLANDS

- 5375 Tropical Tahiti, Society Islands.
 5600 Manila, Philippine Islands.
 5607 General Scenes, Philippine Is.
 5771A Fiji Islands.
 A1202 Hawaii, Waikiki and Kauai Is.
 A123 *Honolulu and Waikiki, Oahu (3 reels).

WEST INDIES

- B0341 Havana, Cuba.
 B3091 Puerto Rico.

NORTH AMERICA

- 26X Grand Canyon, South Rim, Arizona.
 36X Grand Canyon, North Rim and Mule Trips.
 A361 *Grand Canyon, North Rim (3 reels).
 131 Yosemite National Park, California.
 136A Washington, D.C. 1
 156 New York City I.
 157 New York City II.
 198A San Francisco, California.
 198B San Francisco, California.
 A004 *Banff, Canadian Rockies (3 reels).
 318 Banff, Canadian Rockies.
 319 Lake Louise, Canadian Rockies.
 332 New Orleans, Louisiana, Mardi Gras.
 380A Montreal I, Quebec.
 A0082 Maligne Lake, Jasper National Park, Alberta.
 A655 *Scenic Niagara Falls (3 reels).
 A6551 Niagara Falls, U.S.A.
 A6552 Niagara Falls, Ontario, Canada.

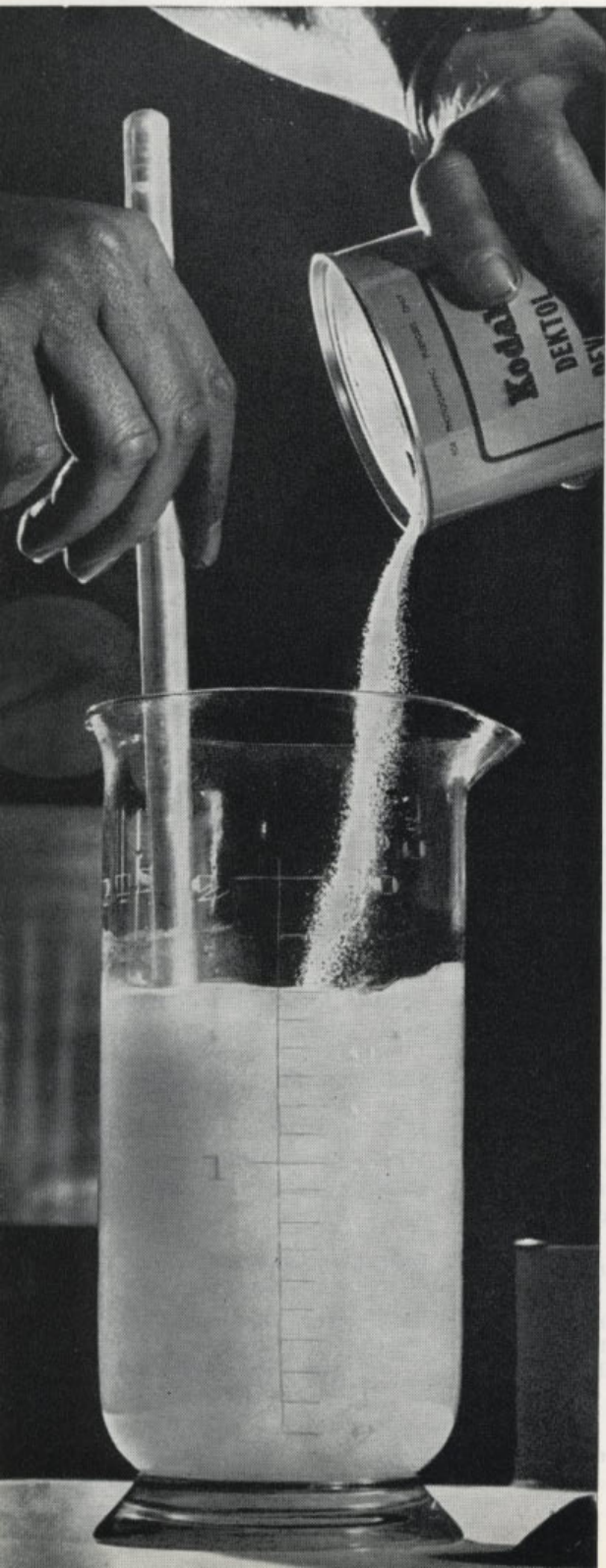
CENTRAL AND SOUTH AMERICA

- 500A Mexico I, Pacific Highway to Lake Patcuaro.
 500B Mexico II, Pan American Highway to Mexico City.
 550C Guatemala, Land of Volcanoes.
 671 Rio de Janeiro.
 B0492 Caracas, Venezuela.
 B0863 Peru.

GENERAL INTEREST

- 6500X South Pole Conquest by Air.
 B6561 Moon Rockets.
 C2801/2/3 Wedding of Princess Margaret and Antony Armstrong-Jones (3 reels).

KODAK CHEMICAL PREPARATIONS



... are accurately and scientifically compounded to produce the best possible results when used in conjunction with Kodak Film, Plates, and Papers. Most preparations are single powders sealed in airtight moisture-proof containers — once the can is punched the powder pours freely and dissolves easily. Kodak Chemical Preparations are machine-mixed to ensure that every can maintains its efficiency and consistency year in, year out.

KODAK PREPARED DEVELOPERS FOR FILMS AND PLATES

Kodak Developer D-19—Ideal for the needs of the technical photographer. It is a rapid, long-life, clean-working developer designed to give negatives of high contrast in 4 to 5 minutes.

Prices: $\frac{1}{2}$ gal. 6.0; 1 gal. 10.3.

Kodak Developer DK-50—A favourite with both amateur and professional workers, it is recommended for processing sheet films and plates in trays or open tanks.

Prices: $\frac{1}{2}$ gal. 3.9; 1 gal. 5.9; 5 gals. 18.9.

Kodak Developer DK60a—For general use in developing roll films, sheet films and plates. It holds well the original emulsion speed and produces high quality results in 5 to 7 minutes development.

Prices: $\frac{1}{2}$ gal. 5.3; 1 gal. 9.0.

Kodak Developer D-72—Is an all-purpose rapid elon-hydroquinone developer suitable for use with all papers, films and plates.

Prices: 20 oz. 3.0; $\frac{1}{2}$ gal. 6.9; 1 gal. 12.0.

Kodak Developer D-76—An excellent developer for all types of roll-film — it gives finest grain with the maximum emulsion speed for normal contrast; and the maximum shadow detail in fine grain films.

Prices: 20 oz. 3.0; $\frac{1}{2}$ gal. 6.0; 1 gal. 10.6.

Kodak Microdol-X Developer — A microscopically fine-grain developer, ideal for films necessitating extreme enlargement. It works quite fast, forms no scum, holds sludge to a minimum and gives uniform performance.

Prices: 20 oz. 3.0; $\frac{1}{2}$ gal. 6.9; 1 gal. 12.0.

Kodak Tropical Developer — Allows the efficient processing of films to be carried out at temperatures up to 101 deg. F. It keeps well and has a good capacity when stored at 75 deg. F. or lower.

Price: $\frac{1}{2}$ gal. 6.9.

KODAK PREPARED DEVELOPERS FOR PAPERS; ALSO

TRAY DEVELOPMENT OF NEGATIVE MATERIALS

Kodak Universal M-Q Developer—Conveniently packed for that quick job of developing or printing just a few films. Makes 12 ozs. of solution for tray development.
Prices: 12 oz. pkts. 0.9; carton of 24 pkts. 18.0.

Kodak Dektol Developer—Ideal for large-scale development of all types of contact and enlarging papers; also suitable for negative materials. Dektol has a high print capacity, keeps well and minimises sludge.
Prices: 20 oz. 3.0; ½ gal. 6.9; 1 gal. 12.0.

Kodak Liquid Developer—A concentrated all-purpose developing solution.
Price: 8 oz. 3.0.

Kodak Bromesko Developer—For use with Bromesko Paper—yields rich warm-black tones by direct development and gives maximum warmth of image.
Prices: ½ gal. 6.0.

KODAK PREPARED HARDENERS AND FIXERS

Kodak Acid Fixer (with Hardener)—An improved, long-lasting, high-capacity fixer which includes the hardener in the one powder. When dissolved in water makes a first-class fixer for use with films, plates, bromide and contact printing papers.
Prices: 8 oz. pkt. 1.0; 20 oz. 3.0; ½ gal. 7.3; 1 gal. 12.9.

Kodak Acid Fixer (Non-Hardening)—Specially recommended for use with papers. Not designed for use with films (which require a hardening-type fixer).
Prices: 20 oz. 2.3; ½ gal. 5.3; 1 gal. 9.9.

Hypo—An all-purpose fixing chemical for preparing non-hardening and hardening fixing solutions.
Prices: 1 lb. 2.3; 7 lb. 15.0.

Kodak Liquid Hardener—When added to 25% hypo solution to make acid-hardening fixing baths it provides the necessary acidity and hardening qualities.
Price: 8 oz. 3.0.

Kodak Tropical Hardener—A chrome alum bath recommended as a rinse between development and fixation during hot-weather processing of films and plates. Should be used in conjunction with Kodak Tropical Developer and Kodak Acid Fixer.
Price: ½ gal. 3.6.

KODAK SPECIAL PROCESSING AIDS

Kodak Anti-Fog—Added to a film or paper developer it helps to suppress fog and increase contrast in materials which tend to fog from age. Of great value in high-temperature processing.
Price: to make 40 oz. 2.3.

Kodak Anti-Calcium—Prevents or minimises the formation of precipitates resulting from the presence of calcium in most tap water.
Price: 4 oz. 3.0.

Kodak Chromium Intensifier—An efficient preparation for intensifying weak, flat negatives.
Price: set of 2 tubes 3.9.

Kodak Dead Black—A thoroughly black solution for painting metal parts, both inside and outside, of cameras. Suitable for general use.
Prices: 2 oz. 3.0; 10 oz. 9.0; 20 oz. 15.0.

Kodak Glazing Solution—For preparing glass and ferro-type plates for giving a brilliant surface to glossy papers. Prevents prints from sticking to glazing plates.
Prices: 4 oz. 2.9; 20 oz. 10.6.

Kodak Hypo Clearing Agent—Excellent wherever a shortage of water exists — saves both water and washing time. Effectively removes hypo with only five minutes washing for films, and ten minutes for papers. In easy-dissolving powder form to make one or five gallons.
Prices: 1 gal. 3.0; 5 gals. 11.3.

Kodak Indicator Stop Bath—A concentrated powder stop bath which, when diluted with water for use, signals that it has reached the point of exhaustion by turning purplish-blue (dark under safe-light illumination).
Prices: 8 oz. 0.9; 20 oz. 2.3; 1 gal. 6.9.

Kodak Lens Cleaner—Keeps lenses clean; prevents growth of fungus.
Prices: 1 oz. 2.3; 4 oz. 3.9.

Kodak Opaque—A quick-drying, perfectly opaque liquid medium for spotting or blocking out negatives or lantern slides.
Prices: ½ oz. tube 3.0; 2 oz. tube 7.6.

Kodak Photo-Flo—Prevents water marks and streaks by decreasing the surface tension of water so that it runs off evenly from film surfaces.
Price: 4 oz. 2.9.

Kodak Odourless Sepia Toner—Gives pleasant and permanent sepia tones, is rapid in action and extremely simple to use. It is a bleach and re-develop process.
Price: two 3 oz. bottles 4.3.



PHOTOGRAPHIC BOOKS . . .

to help you learn more about the fascinating hobby of photography. Here are just a few selections from the wide range:

How To Make Good Pictures (Kodak Ltd.)

Tells everything about amateur picture making from pressing the button to mounting the finished print. It is clearly and simply written and profusely illustrated with first class pictures and diagrams. A "must" for every photographer's library.

PRICE: 16.0.

The Focal Encyclopedia of Photography

A complete photographic library in one volume. The only work of its kind in the world: it contains 2,000 articles written by 197 experts from 23 countries in plain, straightforward English. An unfailing source of photographic knowledge for any photographer.

PRICE: £7.17.6.

How to Make Good Home Movies

Explains just how easy home movie-making really is. Lists in detail exposures, types of lenses to be used to obtain special effects, how to make titles and how to make indoor movies.

PRICE: 12.0.

All In One Camera Book (W. D. Emanuel)

Puts the whole of photography in a nutshell. Covers lens, filters, colour films and dozens of other features that will set you on the path to good photography. An ideal "first book" on photography.

PRICE: 15.9.

Authoritative Eastman Kodak Data Books

Applied Color Photography Indoors	12	0
Basic Titling and Animation	12	0
Better Movies in Color	6	3
Better Snapshots of Your Children	4	6
Better 35mm. Snapshots	6	3
Brownie Book of Picture Taking	4	6
Camera Technique for Professional Photographers	12	0
Clicking with Color	4	6
Color as Seen and Photographed	12	0
Color Photography in the Studio	9	3
Color Photography Outdoors	12	0
Copying	9	3
Darkroom Design and Construction	6	3
Enlarging with Kodak Materials and Equipment	4	6
Enlarging in Black and White and Color	9	3
Infra Red and Ultra Violet Photography	12	0
Kodak Color Data Guide	2	17 6
Kodak Color Films	9	3
Kodak Color Handbook	2	18 0
Kodak Enlarging Technique Data Book	4	0
Kodak Films in Rolls for Black-and-White Photography	9	3
Kodak Filters and Pola Screens	9	3
Kodak Lenses, Shutters and Portrait Lenses	6	3
Kodak Master Darkroom Guide	1	16 3
Kodak Master Photo Guide	1	3 9
Kodak Movie Photo Guide	1	1 0
Kodak Photographic Notebook	1	3 9
Kodak Wratten Filters for Scientific and Technical Use	12	0
Photo Chemistry and Black-and-White and Color Photography	15	3
Photographic Production of Slides and Film Strips	6	3
Photography Thru the Microscope	12	0
Pictures from the Air with Your Camera	4	6
Pictures in Stereo	4	6
Precise 35mm. Technique with the Kodak Retina Camera	9	3
Printing Color Negatives	12	0
Processing Chemicals and Formulae	9	3
Studio Lighting for Product Photography	9	3
Studio Technique for Portrait Photography	12	0

Expertly-Written Kodak London Data Books

All Your Own Work (first developing and printing book)	3	9
Better Movies in Colour	4	6
How to Take Snapshots by Flash	4	6
Kodak Wratten Filters	1	3 6
Let's Take Colour Slide Indoors	8	6
Let's Take Colour Slides Outdoors	8	6
Let's Take Kodacolor Pictures	5	9

Focal Photo Guides (for still photography)

This "All About" series is illustrated with the world's best photographs and written by the world's best photographic authors. Some of the 92 books in the series are: All About Filters, Exposure, Composition, Processing, Colouring, Photographing Animals, People, Selling Photographs, Sports and Games, Pictures in

Town, Children Outdoors, Cameras, Cats and Kittens, Dogs and Puppies, Mother and Child, Lighting for Glamour, Flash, Night Photography, Contact Prints, Taking Baby, Taking Weddings, Print Finishing, Taking Colour, Building Your Own Enlarger, Making Camera Gadgets, Processing 35mm. Film, Taking Parties, Travelling with your Camera, Photographing Shows, Great Occasions, etc.

PRICE: 3.9d.

Focal "How to" Guides (for movie photography)

This "How to" series of books is illustrated with fine photographs and written by some of the world's top movie experts. There are more than 20 books in the series: How to Act, How to Choose Music, How to Film Children, How to Process, How to Project, How to Script, How to Use Color, How to Write Commentaries, How to Write Film Stories.

PRICE: 11.3d. each.

How to Add Sound, How to Animate Cut-outs, How to Cartoon, How to Direct, How to do Simpler Tricks, How to do Tricks, How to Edit, How to Film, How to Make 8mm. Films, How to Make Cine Gadgets, How to Produce Effects, How to Title.

PRICE: 15.9d. each.

OTHER FOCAL PRESS BOOKS AVAILABLE

All the Photo Tricks (E. Smith)	1	9	3
Amateur Photomicrography (A. Jackson)	1	4	9
Bolex 8mm. Movie Guide		14	3
Brownie Movie Guide		14	3
Camera Close-up (O. R. Croy)	2	16	3
Cameras, the Facts	1	6	3
Colour Book of Photography (L. Lorelle)	1	3	3
Colour Transparencies (C. L. Thompson)	1	6	3
Contessa Guide		6	9
Developing (C. J. Jacobson)	1	11	6
Depth of Focus (Cox)		5	3
Enlarging (C. I. Jacobson)	1	11	6
Exposure (W. F. Bug)	1	11	6
Film Editing	1	17	6
How Photography Works	3	3	0
Lighting for Photography (W. Nurnberg)	1	11	6
Lighting for Portraiture (W. Nurnberg)	1	11	6
Making Colour Prints		15	9
Making an Enlarger		6	9
Medical Photography (Longmore)	4	14	6
My Way With the Miniature (Vining)	1	11	6
Photoamateurs' Pocket Book		9	0
Photographic Optics (Cox)	1	11	6
Photo Technique	1	17	6
Posing Patterns	2	12	6
Retina Reflex Guide		14	3
Retina Reflex Way	2	16	3
Retinette Guide		11	3
Rolleicord Guide		11	3
Rolleiflex Guide		14	3
Rollei Way	1	17	6
Simple Art of Making Films	1	17	6
Sound for Your Colour Movies	1	2	0
Successful Colour Photography		14	3
Technique of Film Animation	3	3	0
The Retina Way (O. R. Croy)	1	11	6
35mm. Photo Technique (Newcombe)	1	11	6
Ways and Means to Better Movies		2	3

**TURN YOUR SNAPSHOTS
INTO MASTERPIECES
WITH A
FRAME
FROM KODAK**



A

A. PARKER. In two styles—shadow box and plain. Economical all-wood frames with slide-in back, reversible strut, and cut-out mount.

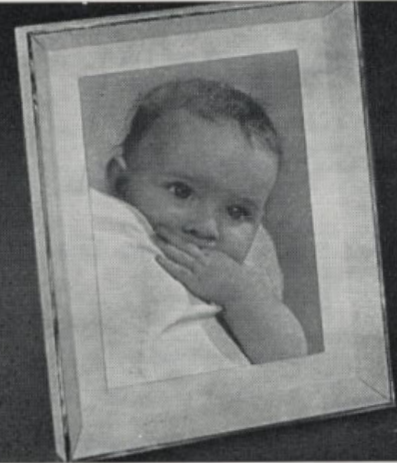
B. ARTLINE. Tastefully modern shadow-box, all-metal frame; in dove-grey with "silver" front rim. Has slide-in back, cut-out mount and two-way strut. Size 8 x 10in.

C. RAYCO. Attractive metal frame in white with a gold edge. Fitted with cover glass.

D. REYNOLDS. Neat metal frame with floral corner pattern—in antique gold and nickel. With convex glass, mount, and reversible strut.

E. HOGARTH. Smart brass frame in antique brass or chrome. With convex glass, cut-out mount, reversible strut.

B



C



D

E

Parker (in grey and white or mushroom and white) —

Shadow Box:

3½" x 5"	7	10
3½" x 5½"	8	10
4½" x 6¼"	10	6
6" x 8"	12	0
7" x 7½"	12	3
8" x 10"	14	3
10" x 12"	17	6
12" x 15"	1	6 3
16" x 20"	1	14 8

Plain Standing (in gold or cream) —

3½" x 5½"	5	3
4" x 6"	5	3
6" x 8"	6	9
7½" x 9½"	8	9
8" x 10"	9	0
10" x 12"	11	6

Artline —

8" x 10"	1	2	0
----------	---	---	---

Rayco —

3½" x 5" (for colour prints)	8	0
------------------------------	---	---

Reynolds —

3½" x 5½"	15	0
4½" x 6½"	16	6
6" x 8"	18	0
8" x 10"	19	6
10" x 12"	1	6 9

Hogarth —

3½" x 5½"	17	0
4½" x 6½"	18	0
6" x 8"	1	0 3
8" x 10"	1	6 8
10" x 12"	1	12 10

Protect Your Snapshots with KODAK ALBUMS

... for Kodak Albums help you to preserve for tomorrow the fun of the snapshots that you make today. They provide you with an easy-to-keep yet permanent picture record that you will enjoy and treasure in the years ahead. Those illustrated here are just a few selections from the wide range of Kodak Albums available.

GLEN ▶

Neat and attractive in a range of rich-looking leatherette covers in various colours. Of loose-leaf construction and firmly secured with a tasselled silk cord. The cover is gold stamped "Photographs". 20 grey leaves. Size 10½ x 8½ in.

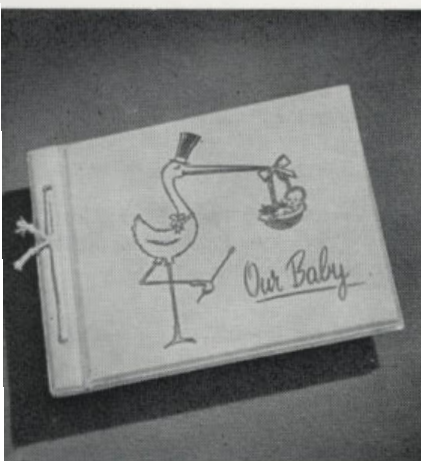
PRICE: 15.9.



◀ RIVIERA — BABY

Keeps all your baby's pictures together for a lifetime of "looking back". Has stork design and the words "Our Baby" embossed in gold on the front cover — both covers are plastic covered and washable. With tasselled cord binding it is available in pink or blue. Spare leaves are also available. 25 leaves. Size 10½ by 9 in.

PRICE: £1.9.6



CAMERA STUDIES ▶

Its attractive coat-of-arms cover design adds a touch of distinction, thus making it ideal for gift purposes. It is available in a range of coloured covers which are eye-letted and corded to match. 20 blue-grey leaves. Size 4: 9¼ x 10¼ in.

PRICE: £1.5.0.

Super-Size Album

Size 12 x 12½ in.

PRICE: £1.19.0.



SNAPSHOT ▲

A handy medium-size album for snapshot prints and small enlargements. Has black leaves, stiff card covers and strap and buckle binding. In a range of colours. 20 leaves. Size 6 x 9½ in.

PRICE: 9.0.

**RIVIERA SERIES
WEDDING ALBUM, £1.19.6.**

Photo Studies —

No. 1	1 5 3
No. 3	1 15 3

Ormond Series 19 9

Regal —

No. 1	18 3
Spare Leaves (12)	5 10
No. 3	1 6 6
Spare Leaves (12)	7 6

Strand Special 3 7 9

Renown —

No. 1	1 12 0
Spare Leaves (24)	6 2
No. 2	2 2 6
Spare Leaves (24)	7 9

Broadway Super-size	1 18 0
Spare Leaves (25)	10 0

Austral Negative Album —

2½" x 3½"	18 6
24mm. x 36mm.	1 5 9

Kodacolor Print Albums —

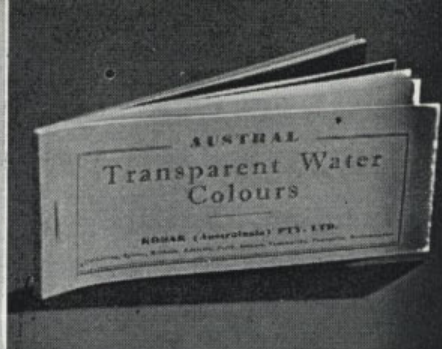
3½" x 5"	13 9
3½" x 3½"	12 9



A



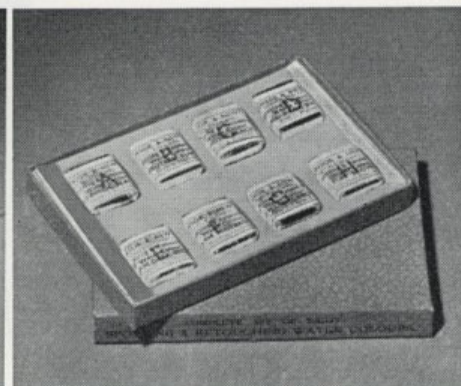
B



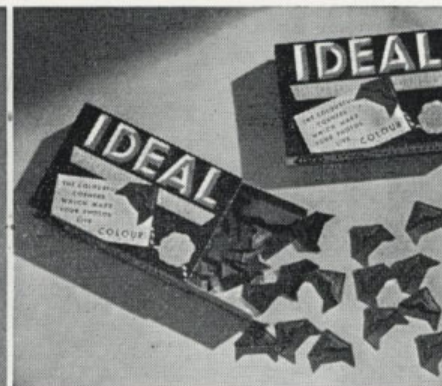
C



D



E



F

Colouring, Retouching, and Mounting

(A) **Kodak Photo Paste** — Excellent for mounting snapshots in albums—no bulges, no curled corners. Prints lie flat and will not cockle or stain.

Prices: 2 oz., 2.6; 4 oz., 3.0; 16 oz., 6.6.

(B) **Morgan Photo Oil Colour Outfit** — Has 14 different colours capable of producing almost any shade or tint. Also has reducing medium and an instruction leaflet.

Price: £1.16.9.

(C) **Austral Transparent Water Colours** — Excellent for all colouring purposes. In sheets of stamps of 10 different colours—each stamp dissolves in water to make dye. With instructions.

Price: 2.10.

(D) **Velox Water Colour Outfit** — Colours are quickly mixed and easily applied, with excellent results. Outfit comprises Velox Water Colour Book (twelve different colours with instructions), palette and brush.

Price: 7.6.

(E) **W. & N. Spotting and Retouching Water Colours** — For the removal of scratches or dust marks on prints, or the reduction of flesh shadows, etc. Available in sets of eight cakes of various blacks and browns.

Price: £1.1.6.

(F) **Ideal Photo-Corners** — For mounting prints in albums. Are strongly made and sure to stick quite fast. Available in a wide range of colours. In boxes of 100.

Price: 1.0.

Kodak Opaque — A quick drying, completely opaque medium for blocking out unwanted spots, etc. In liquid form, it is available in two sizes.

Prices: No. 1, ½ oz. tube, 3.0; No. 2, 2 oz. tube, 7.6.

W. & N. Spotting Brushes—Accurately made from selected sable hair firmly set in a nickel mount; wooden handle. In a range of sizes from No. 00 to No. 9.

Prices: From 1.10.

Johnson Pen-Nib Trimmer — An invaluable yet economical outfit comprising twenty nibs and one holder. The nibs have a razor sharp cutting edge for trimming prints.

Price: 11.0.

Kodak White Ink — For writing or drawing over any dark coloured surface. Completely opaque it is ideal for titles on black leaves of albums, etc. Available in ½ oz. bottles.

Price: 2.0.

Kodak Retouching Medium — This holdfast transparent retouching medium is prepared from a highly approved formula for use with either varnished or unvarnished negatives.

Price: ½ oz., 1.6.

Kodak Liquid Glue — Strong all-purpose glue; ideal for mounting prints, glueing leatherette to cameras and all such minor darkroom jobs. In 2 oz. tube.

Price: 2.0.

Enjoy the magic of movies . . .

KODAK HOME MOVIE EQUIPMENT

You make snapshots, of course. Lots, perhaps, in colour. And it's wonderful, indeed, to have these highlights of your life.

But look around you — that young dynamo you call "son"; that whirlwind you call "daughter". Have you ever known them to walk when running is so obviously the only sensible way to get places. Or remain completely still, try though they may? Even then there's a giggle . . . a grin . . . an ear to scratch.

For that's how children were meant to fill their colourful never-still world. Life just won't stand still for you — or for your camera. And that's where movies have a magic of their own . . . for all picture makers . . . with all subjects!

And movies tell such a wonderful story. Just as you'd tell it step by step — a living, moving,

colourful life-like story. And with Kodak's modern movie equipment movies are as easy to make as snapshots. So inexpensive too. With a 25 ft. roll of 8mm. Kodachrome Film you can shoot anything up to 40 scenes or so (enough say for the movie highlights of a week-end) — a running cost of a little more than one shilling a shot. And with each reel first cost is last cost. When exposed, the film is processed by Kodak without extra charge and is returned to you post free ready for projection. Ask your Kodak dealer to show you the movie equipment described in this catalogue. Remember, the best time to start a personal movie diary is now. Every day that goes by, you're missing scenes and incidents you'd later give the world to have filmed.

KODAK MOVIE FILMS

KODAK 8mm. MOVIE FILM

The ideal movie film size for true to life home movies. The same full colour film as supplied for 16mm. cameras, it takes a smaller picture . . . more pictures on the same length of film. You cannot therefore project 8mm. movies as large as 16mm.; but you can show 8mm. movies on screens up to 4 feet or more in width. 8mm. film, of course, costs less than 16mm. — yet is easily adequate for wonderful home shows.

KODAK 16mm. MOVIE FILM

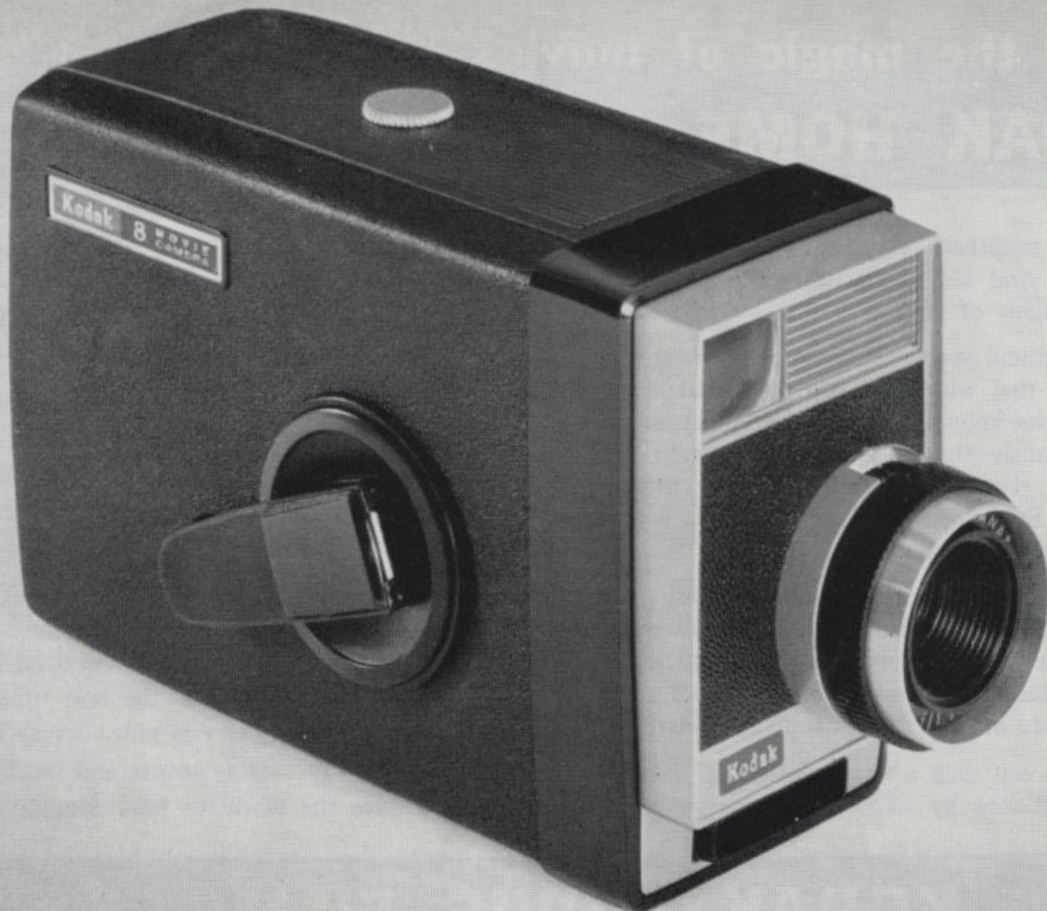
The larger images on 16mm. film can be shown on screens up to 8 . . . 10 . . . 12 feet in width. And on smaller living-room screens 16mm. movies will naturally be somewhat sharper than those from 8mm. film. Furthermore, while there are versatile 8mm. cameras, there are more versatile 16mm. cameras.

In brief, while 8mm. movies are wonderful indeed for personal film records, 16mm. movies are even better in the home . . . far better for

large-group showings at clubs, in small auditoriums.

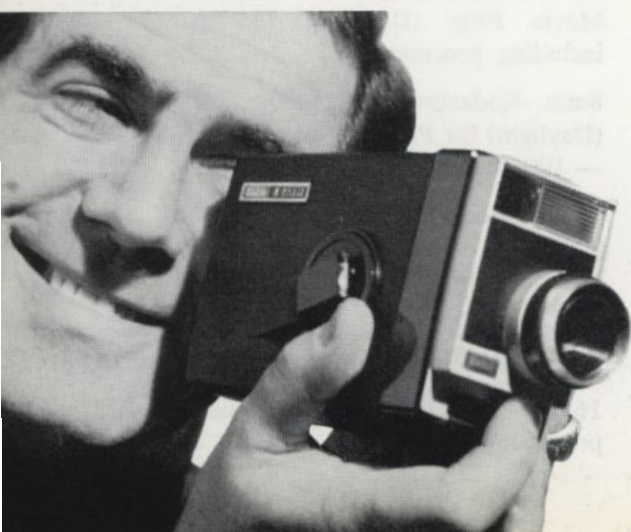
PRICES:

8mm. Kodachrome II Movie Film (Type A or Daylight) 25 ft. roll including processing	£2.6.6
8mm. Kodachrome II Magazine Movie Film (Daylight) (25 ft.) including processing	£3.2.6
8mm. Kodachrome II Movie Film (Daylight) for Paillard Bolex Camera — 100 ft. Roll including processing	£8.8.0
16mm. Kodachrome II Movie Film (Type A or Daylight) 50 ft. roll including processing	£3.8.6
16mm. 100 ft. Roll (Single or Double Perforation) including processing	£5.19.0
16mm. Magazine 50 ft. including processing	£3.18.6



KODAK 8 MOVIE CAMERA

A modern inexpensive 8mm. movie camera that will give you all the fun of making sparkling 8mm. full-colour home movies with the simplicity of



taking black-and-white snapshots. All you have to do is: load, set the aperture to the prevailing light condition, aim and shoot. A fast 13mm. Kodak Ektanar f/1.9 lens ensures sharp, bright picture. A continuously variable diaphragm gives accurate lens openings from f/1.9 to f/19. Sprocketless loading makes threading easy and straightforward film is simply slipped into the gate and on to the take-up reel. Other features are: Long-run spring-driven motor with lever wind; optical viewfinder; accepts tripod and movie light; automatic footage indicator; jerk free shutter release bar; and sturdy moulded construction. Finished in black and silver, it loads with double run Kodachrome Movie Film.

PRICE: £18.19.0.

BROWNIE 3-LENS TURRET

MOVIE CAMERA

Simple to operate, exciting to use, the Brownie 3-lens Turret makes you the master of every movie-making situation.

Shoot with the standard Ektanar 13mm. lens and you'll get all average shots sharp and clear. For bringing distant subjects close-up just rotate the turret to the 24mm. telephoto lens. When you want more in your picture but you can't get far enough back from your subject, you switch to the 9mm. wide angle lens.

All lenses are pre-set — everything you shoot from 2 ft. with the wide angle, 4 ft. with the

standard and 6½ ft. with the telephoto lens is needle sharp — no need to adjust focusing.

Apertures from f/1.9 are set by rotating a clearly marked knurled ring. Other features include eye level viewfinder with adjustment for parallax and frames for each lens, long run spring motor, sprocketless loading, footage counter, solid metal construction and provision for tripod fitting. Loads with double-run 8mm. film. Carrying cases from 27/6d. are available as an accessory.

PRICE: £32.0.0.

KODAK 49





KODAK AUTOMATIC 8

MOVIE CAMERA

Latest addition to the Kodak range of movie cameras, this new model makes movie-making as easy as pressing a button. Completely automatic, you just load the film, set the film speed and you are ready to start shooting. There's no "stop and start" filming with this camera because it automatically adjusts the aperture to changing light conditions. For instance, if you are shooting in bright sunlight and the sun moves behind a cloud, causing the light to fade, there's no need to stop — make adjustments — and start again. The Kodak Automatic 8 Movie Camera's built-in exposure meter allows you to film all you see without the worries of over or under-exposure or interrupted sequences. When there is insufficient

light to shoot, an automatic warning device shows in the viewfinder. If the camera is loaded with indoor film, a built-in "Type A" filter enables you to shoot both indoors and out on the same roll of film. Other features are: Ektanar f/1.6 lens; has adapter ring for close-up lenses and filters; long run motor; lever wind; accepts Mobilgrip Auto Trigger; eye level viewfinder has parallax correction for close-ups; automatic footage counter resets when film is loaded; sturdy construction; finished in dark green and grey. Loads with double-run 8mm. film.

PRICE: £28.10.0.

KODAK ZOOM 8 AUTOMATIC

MOVIE CAMERA

Versatility, handling ease, and quality are combined in this new Zoom 8mm. camera. It is equipped with a full-focusing f/1.6 lens, which can be zoomed simply by rotating the lens barrel. And a bright optical finder zooms with the lens, all the way from wide-angle to telephoto.

For those who want the utmost ease in movie-making, the lens can be used in a fixed-focus position. Full-focusing is provided for those who prefer more critical movie-making. In this case, the footage scale is adjusted for any distance from 6 feet to infinity by rotating the front lens ring. Correctly exposed movies are assured by the electric eye, which automatically sets the lens opening. If there is insufficient light for good movies, a warning pointer appears in the viewfinder.

Another feature of the camera is a built-in "Type A" filter, which permits the movie-maker to shoot outdoors as well as indoors on the same roll of

8mm. Kodachrome Film, Type A. A pointer in the viewfinder indicates when the filter is in place. Other lens attachments may be used with a Series VII 47.5mm. Slip-on Adapter Ring.

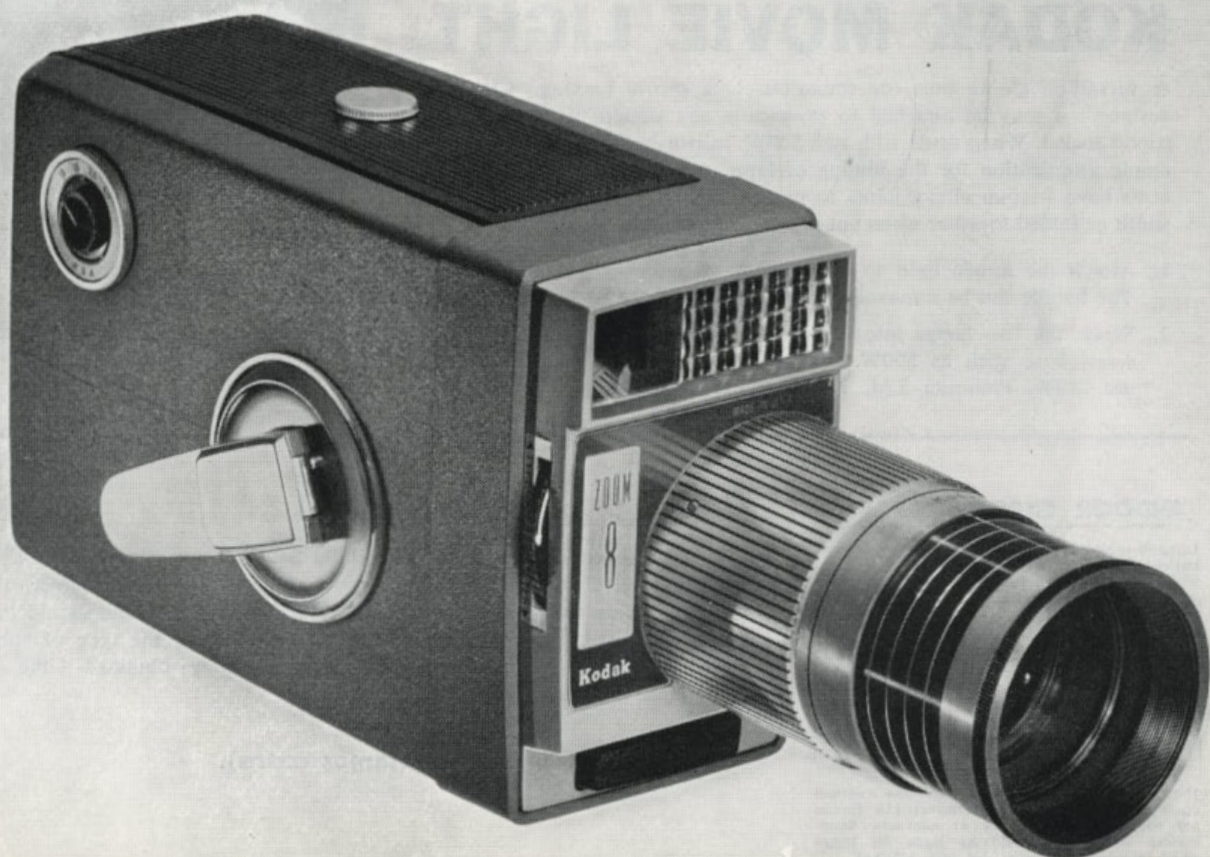
Handsomely styled, the camera is of sturdy die-cast construction in gun metal grey, and is equipped with a metal crank which winds a pre-stressed spring that gives a smooth, quiet, full 10-foot run of film.

When the camera is loaded and locked, the film-footage counter sets itself automatically. Other features include easy loading, made possible by a built-in film channel, and a meter dial which sets the electric eye for film-exposure indexes 10 to 40. Fitted with tripod accessory shoe it accepts the Kodak Movie Light or a Mobil Autogrip Trigger.

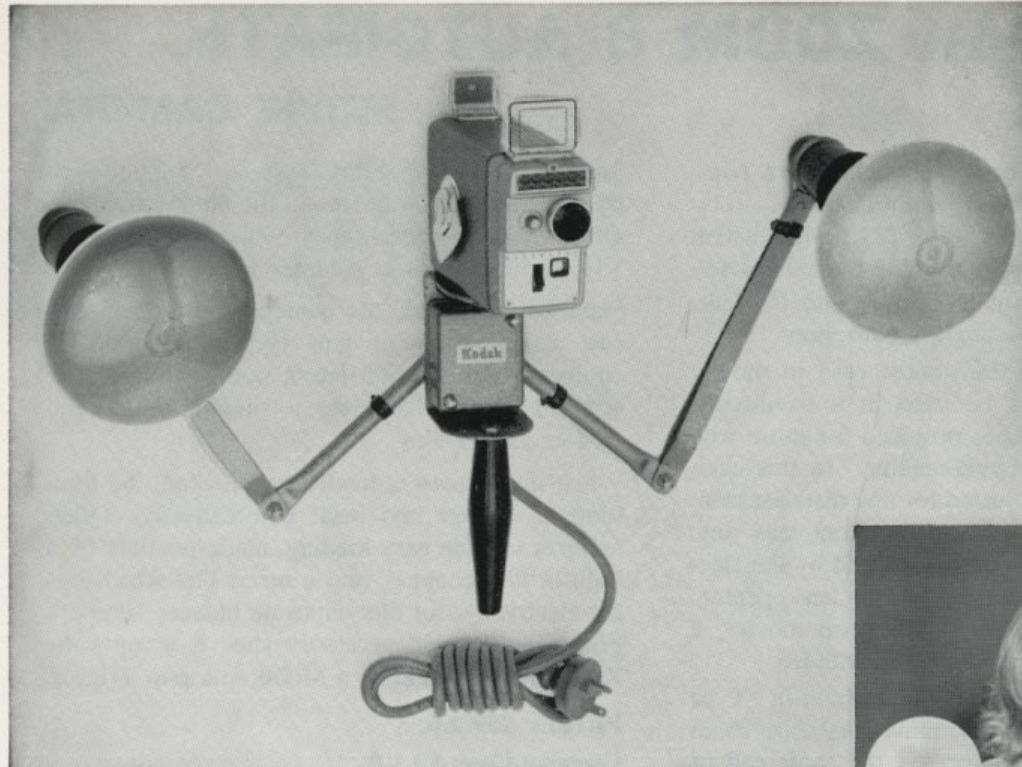
PRICE: £59.2.6.

Carrying Case: £3.1.0.

KODAK 51



A KODAK INDOOR MOVIE AID



KODAK MOVIE LIGHT

A versatile lighting unit for round-the-clock movie making. Cleverly designed, it may be attached to practically any camera with a built-in tripod socket. When fitted with two 500W. mirror-back lamps it provides ample illumination for the filming of large groups. Special spring steel arms have friction elbow joints to permit them to be arranged to a set width or folded together when not in use. To assemble —

1. Attach the movie light to the camera by screwing the knurled captive screw into the tripod socket of the camera. The handle can be removed if not required and the handle socket used to attach the movie light to a tripod.
2. Screw the two lamps into the sockets on the movable arms. Use 240V. reflector back flood lamps with an Edison screw base such as 500W. Photolita N.M. Type PF 218E27 (average life six hours). For close-up work you can use 250W. Photolita S.M. Type PF 217E27 (average life two hours).

INDOOR EXPOSURE TABLE

Lamp-to-subject distance using two mirror backed floodlamps and the Kodak Movie Light with Kodachrome II Type A Film.

Lens Opening	Lamp-to-Subject Distance	
	2—250W.	2—500W.
f/5.6	—	4—6 ft.
f/4	4—6 ft.	6—8½ ft.
f/2.8	6—8½ ft.	8½—12 ft.
f/1.9	8½—12 ft.	12—17 ft.

These distances are based on the normal operating speed of movie cameras (16 frames per second), also on new or near-new floodlamps. Allowance should be made for lamps which through use may be less efficient.

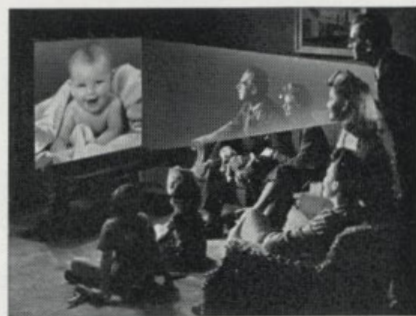
How to use . . .

Connect the power cord to any household 240V. outlet. For details of suggested exposure see table attached. Generally for subjects close to the camera the lamps should be close together, for subjects farther away the lamps should be farther apart. If possible the background should be suited to the type of subject and should not be of a distracting nature. Best results are obtained if the subject is fairly close to a light coloured background.

PRICE: £6.15.0 (lamps extra).

BROWNIE EIGHT-61 PROJECTOR

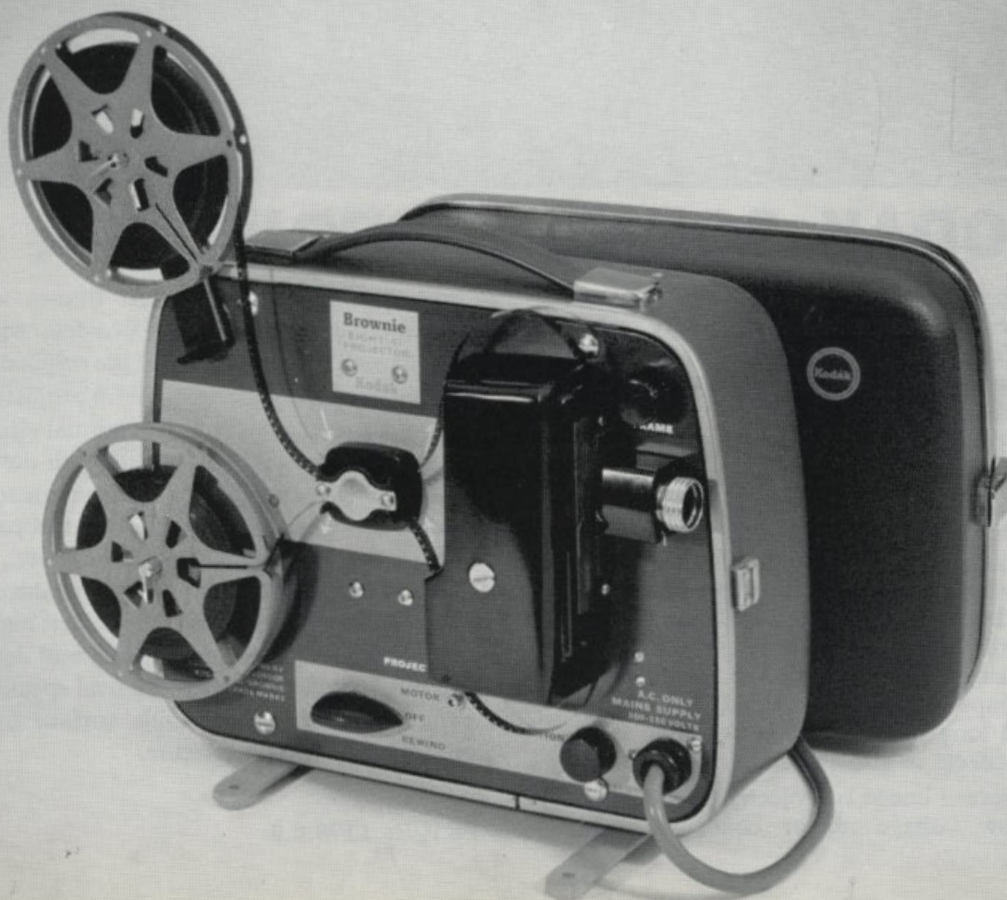
Simple-to-operate, highly efficient partner to the Brownie Movie Camera or any other 8mm. camera. The projector is neatly built into its own smart case, light and easy to carry. The revolutionary lamp and special lens give a large and brilliant screen image, e.g. 18 x 24 in. at 10 ft. or 30 x 40 in. at 15 ft. Film threading is quick and straightforward and uses only one sprocket. Markings show the film path to be followed. Holds up to 400 ft. of 8mm. film. Power re-wind. Low operating temperature. Low current consumption means that it can be run quite safely off a normal A.C. lighting circuit; it can be adjusted to suit supplies from 200 to 250 volts. Combined motor/transformer saves weight and cost. Motor provides constant projection speed despite voltage fluctuations. Simple, positive framing controlled by knob above the projec-

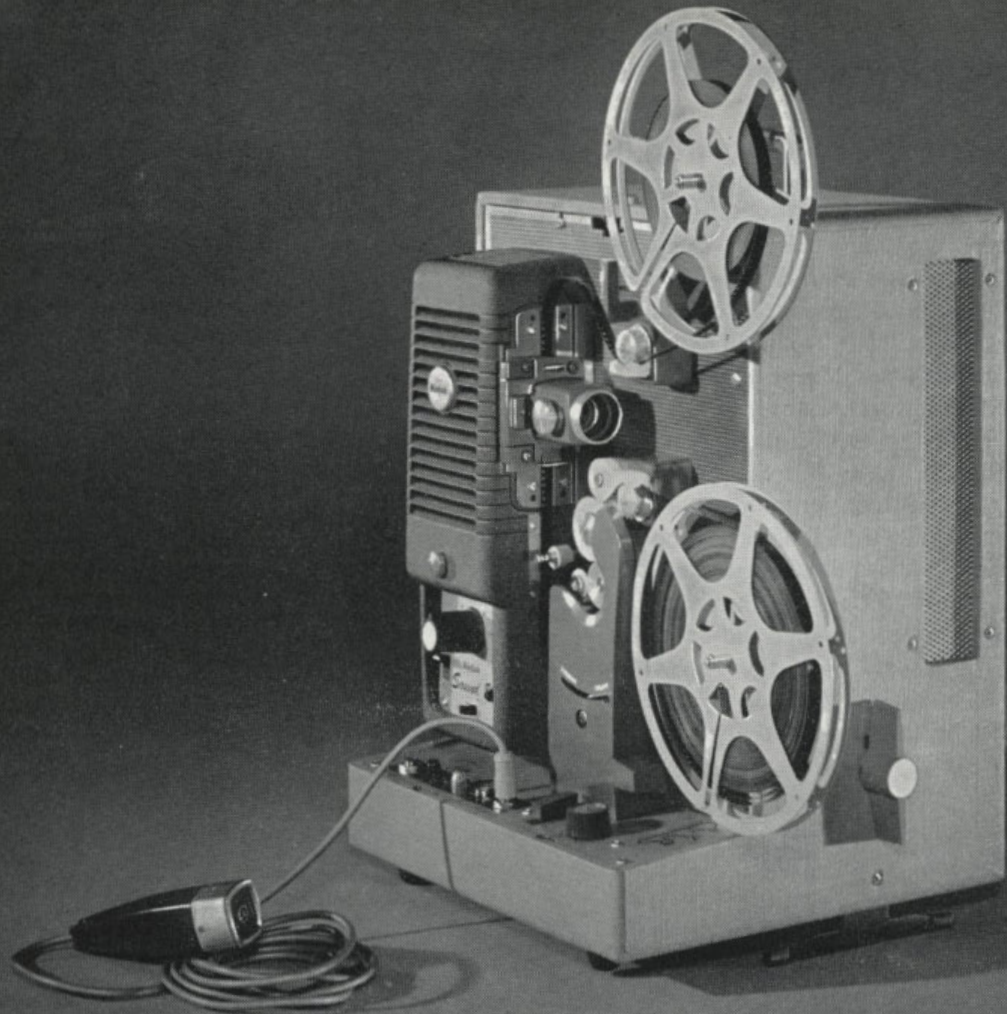


tion lens. Gate quickly and easily dismantled for cleaning. Single switch for motor, lamp and rewind. Elevation adjustment up to 10 degrees with positive lock. Nylon and oil-impregnated bronze bearings throughout requiring no oiling. 8½ ft. cable which can be stored quickly in the lid.

PRICE: £45.10.0 (complete with lamp and 200 ft. reel.)

KODAK 53





KODAK SOUND 8 PROJECTOR

Now you can add the magic of sound to your 8mm. movies. You can add commentary, music or sound effects direct to the processed film. The unique sound drive system and Alfenol recording head of the Sound 8 results in sound reproduction equal to most 16mm. optical sound systems.

The recorded sound is pure, sparkling and distortion free. Sound is recorded on to any 8mm. film — old or new — after a magnetic oxide stripe has been added to the film edge. Commentary is recorded by speaking into the microphone (supplied) as the film is projected, hence perfect synchronisation. Music and other effects can be added by using a tape recorder or record player (a phono input lead is provided). A special orchestrated long play disc of background music and sound effects is also included.

A brilliant screen image is projected by the highly effective, low voltage mirror condenser lamp.

With two brightness settings it throws a clear, high temperature light up to five feet wide and still retains all the crisp detail of the original frame. Fitted with a wide-angle $\frac{3}{4}$ in. f/1.6 projection lens it shows a full size picture in a normal size room. Other features are: high quality pull-down and shutter combination keeps picture steady and jump free; two speeds 16 and 24 frames per sec.); reverse action for repeating scenes, etc., motor driven rewind; elevation control; mechanism never needs oiling; can be used as an amplifier; high speed cooling fan keeps projector cool and lengthens lamp life; high fidelity 10 x 2in. oval speaker; long lasting two tone blue metallic surface finish on projector, blue fabric on case.

PRICE: £199.0.0.

CINE-KODAK K-100 (16mm.)

STANDARD MODEL (not illustrated) — When you use the versatile Cine-Kodak K-100 Movie Camera, the only limit is your own imagination. Many professional effects can be achieved with the camera itself; in addition, an auxiliary hand crank can be used to make multiple exposures, fades and lap dissolves or vary the exposure for extremely adverse lighting conditions. A full range of shutter speeds from 16 to 64 f.p.s. plus single-frame exposure is provided. Fitted with a 25mm. Kodak Ektar f/1.9 lens. (Available also in the f/1.4 lens model.)

Lens and matching viewfinder are interchangeable for telephoto and wide-angle shots; the new type spring motor will expose nearly half the 100ft. roll capacity with one winding. Weighing only 5½ pounds, it is complete with field case.

PRICE: £141.0.0.

TURRET MODEL (illustrated) — A precision 16mm. camera with all the features of the standard model K-100 with the added versatility of a turret-head. Fitted with 25mm. f/1.9 or 25mm. f/1.4 Ektar lens and matching viewfinder lens, the turret model has provision for two other lenses and matching viewfinder lenses. Weighing only 6¼ pounds, it is complete with field case.

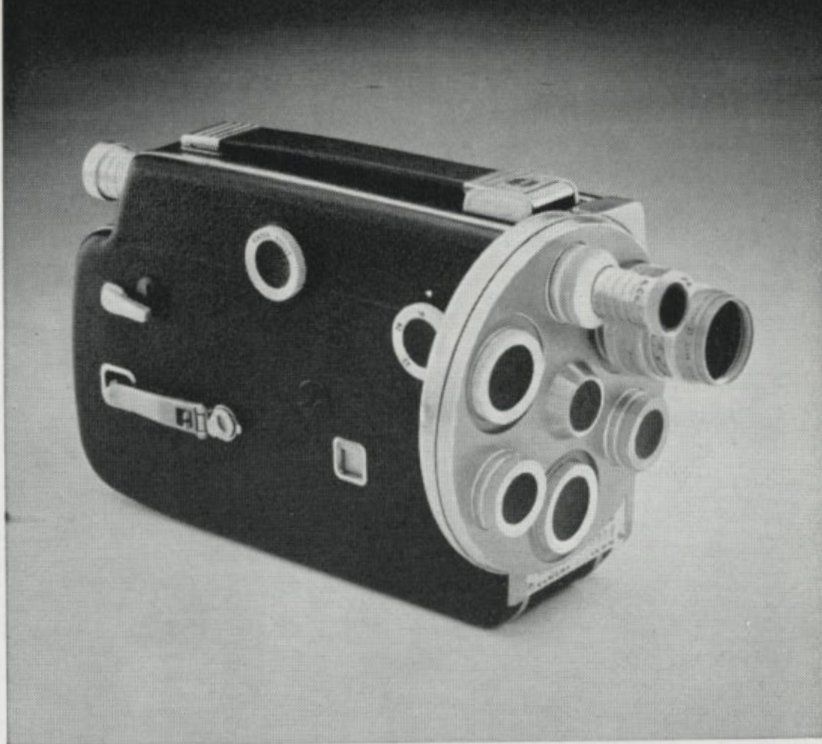
PRICE: £157.12.0.

CINE-KODAK ROYAL MAGAZINE (16mm.)

It's so easy to make fine movies with the 16mm. Cine-Kodak Royal Magazine Camera. It loads in just three seconds with a drop-in magazine; this means that film types can be changed instantly right in the middle of a roll without any cranking back or re-threading. Shutter gives selection of 16, 24 and 64 frames per second with single-frame exposure for animation or stop-motion effects. Fitted with a Cine-Ektar 25mm. f/1.9 lens. A built-in exposure guide indicates correct setting; the zoom-type optical finder adjusts for lenses from 15mm. to 152mm. (Compartment case available as an accessory. Price: £7.19.0.)

PRICE. £94.12.0.

KODAK 55



KODAK MOVIE CAMERAS





KODAK PAGEANT 16mm. SOUND PROJECTORS

Kodak Pageant Sound Projectors — unmatched in the 16mm. field — are truly designed and engineered to make motion pictures easier and more effective in commercial and personal use.

Pageant Projectors are easy to use

Only Pageant Projectors bring you **all** the features that make for easy set-ups and operating convenience: reel arms that fold into place without so much as turning a screw; attached, ready-for-use drive belts; simplified threading with a minimum of rollers and threading points; conveniently located and simple controls.

Pageant Projectors are truly dependable

Every Pageant Projector is lubricated for life at the factory through the use of oil-impregnated bearings, ball bearings with sealed-in lubricant, and long-wearing nylon gears. As a result, Pageant Projectors taken from stock have run more than 1,000 hours without stopping — roughly equal to 2½ years of normal use.

Each Pageant model is built to provide a superb picture, to capture the full tonal range of the sound track, and to give long and dependable service with minimum maintenance.

Pageant Projectors pick up all the sound

Pageant tonal quality is unsurpassed because a unique fidelity control makes it possible to adjust the scanning beam to any 16mm. sound track, regardless of placement. Pageant's true-rated amplifiers cover a frequency range of 50 to 7,000 cycles per second. And every Pageant Projector has a well-baffled speaker which may be placed at the screen location for best results.

Pageant Projectors yield brilliant pictures

Pageant Projectors provide the extra screen brilliance often needed for "long throws" or where rooms are hard to darken. Increased cooling capacity permits the use of 1,000- and 1,200-watt projection lamps in place of the standard 750-watt lamp.

MODEL AV-085-F1 (Illustrated)

Here's a projector filled with quality features — an ideal machine for 16mm. sound-and-silent projection in classrooms, clubrooms, offices, and other locations where the extra sound of higher-wattage models may not be required.

The Model AV-085-F1 has every basic essential for successful motion picture screenings — Super-40 Shutter for extra screen brilliance; well-baffled, 11-inch oval speaker, fidelity control, and eight-watt amplifier for true sound quality. And, like every Pageant, it's lubricated for life at the factory . . . ready to give lasting service when you want to use it.

Extremely compact, the Model AV-085-F1 comes in a single light-weight case with built-in speaker in cover and new scuff-resistant "spatter finish." Handsome in appearance as well as performance, a truly economical buy for anyone using projectors widely in either education or business. Weight, without transformer, 33 lbs. **PRICE: £286.10.0.**

MODEL AV-255-S

The newest model in the Kodak Pageant Sound Projector line, the AV-255-S, can be used both in average-size classrooms and in larger auditoriums, lecture halls, science labs, and similar places where it is often difficult to meet projection requirements. Its new 25-watt amplifier, coupled with a heavy-duty, well-baffled 11-inch oval speaker, specifically designed to handle the increased output, provides the extra sound capacity needed . . . and, being portable, the projector can be moved from room to room quickly and easily.

To complement the increased sound capacity, the exclusive Super-40 Shutter and a 1,200-watt projection lamp give a brilliant screen image even with the longest throws. Weight, without transformer, 41 lbs.

PRICE: £317.12.6.

MODEL MF 2

Here's the Pageant Projector for use not only in projecting conventional sound motion pictures with optical (photographic) sound tracks, but also for recording and playing back sound on magnetically striped film. With the Pageant MF2, you can add sound to your films conveniently, inexpensively. Likewise, magnetic sound tracks, "full- or half-width," can be applied to optical track films.

Adding sound to your motion pictures with the Pageant Model MF2 is much like using a tape recorder. Any 16mm. motion picture, single or double perforated, may be economically coated with a magnetic oxide stripe; on this you record your narration, sound-effects, musical background, etc.

Operates from 210V to 250V mains.

PRICE: £488.5.0.

GENERAL FEATURES OF ALL PAGEANT SOUND PROJECTORS

PROJECTOR

Threading — Simple, straightforward, from supply reel through mechanism and sound system to take-up. Loop-former speeds threading, lets you restore "lost loops" without stopping machine.

Film Protection — Sprocket clamps have Tenite rollers. For film protection, no stationary parts contact picture or sound-track areas.

Film Capacity — 2,000 ft. of 16mm. film.

Film Movement — Nonskip-type, ball-bearing pivoted tandem-tooth movement. Special tungsten carbide pull-down tooth assures long wear.

Rewind — Motor-driven, smooth, safe — no transferring belts or reels. "Knee-action" lever guards against threading in rewind position.

Gate — Readily removed for inspection and cleaning without use of tools. "Floating-pressure" design provides optimum handling of films.

Sound-and-Silent Speeds — Constant-speed motor for sound or silent projection (24 or 16 frames).

Super-40 Shutter — Exclusive automatic-shifting three- and two-bladed shutter provides optimum projection at sound and silent speeds, 40% extra illumination at sound speed.

Standard Lens — Kodak Projection Ektanon Lumenized Lens, 2-in. f/1.6 with field flattener.

Lubrication — Mechanism is "lubricated for life" by oil-impregnated bearings, sealed ball bearings and oil-retaining pads.

SOUND SYSTEM

Sound Drum — Rotating-type drum and massive fly-wheel, mounted on precision ball bearings.

Sound Optics — Sealed-in cylindrical lens system produces precise scanning beam on sound track. Fidelity Control provides sharpest possible line of light on sound track regardless of "up" or "down" emulsion position.

Exciter Lamp — Operates on filtered DC from amplifier (AV-085-F1 and AV-255-S). Oscillator in MF2 proves high frequency current for exciter lamp or for record bias and erase. Easily accessible. Unique pin-release lever.

Fidelity Control — Exclusive feature — assures reproduction of full tonal range of film soundtrack.

AUXILIARY EQUIPMENT

Auxiliary Lenses — 1½" f/2.0, 3" f/2.0, 4" f/2.5.

Cine-Kodak Bi-Focal Converter — Two lenses in one — effectively alters the focal length of the standard 2" lens to either 1½" or 2½".

Kodak De Luxe Speaker — 12" full range unit, built into a large volume, well baffled enclosure.

Phono Adapter — Links Model AV-085-F1 with any suitable turntable.

Kodak Microphone — The sound system of the Pageant may be used as a public address system with this accessory.

Transformer for Models AV-085 F1 and AV-255-S — Converts 200-240V. A.C. to 105-125V. A.C.

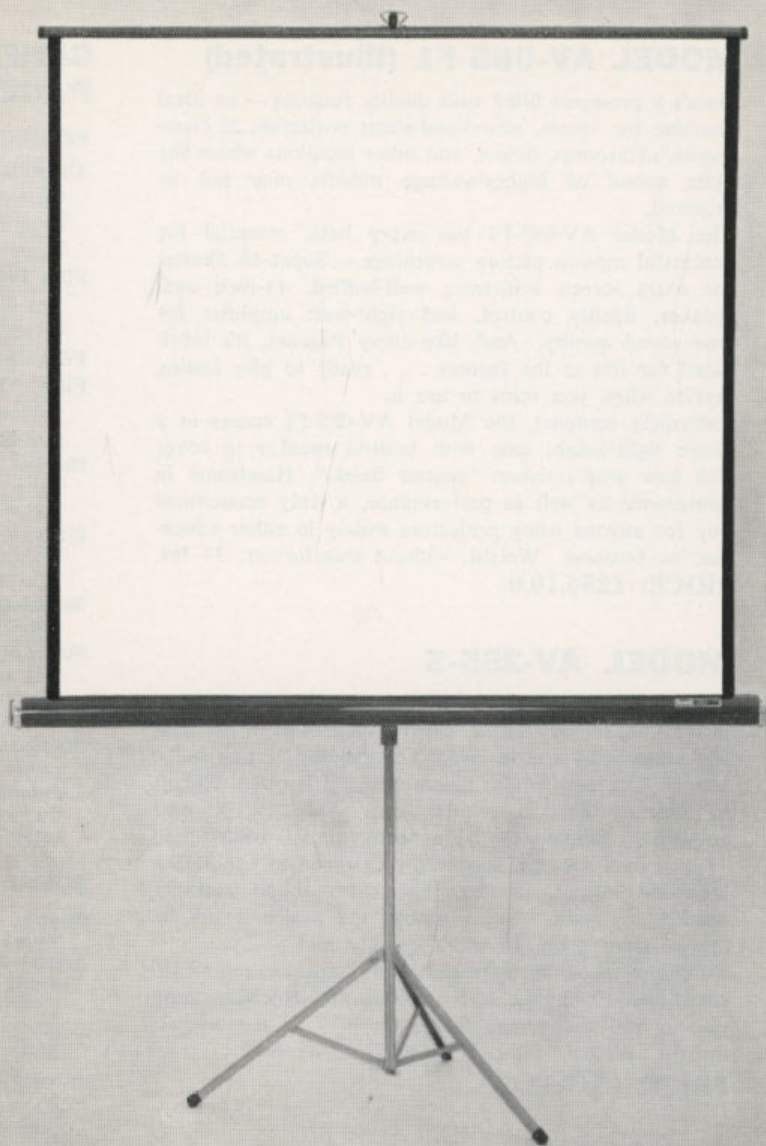
KODAK PROJECTION SCREENS

Whether you want to project colour movies or slides, they'll look more natural and true to life when projected on a Kodak screen. Self-supporting, standing on its own tripod legs, it is completely portable and therefore far more versatile in use — no need to provide means for hanging or standing on a table.

It is built as a complete unit — the streamlined protective tube for the screen is permanently fixed to the tripod base which folds up into a compact unit for handling and storage; it has a carrying handle; it is very light, and so is ideal for transportation purposes. The high quality glass beaded projection surface is protected in the steel barrel, unrolls and is clipped to the extending arms ready for use.

Caps are fitted to the tripod legs to prevent them scratching the floor. A metal slat bar is built in to prevent scuffing of the screen surface whether it is open or closed.

Available with a fine grain glass beaded surface in three sizes.



PRICES:

30" x 40"	£7 17 6
40" x 40"	£9 10 0
50" x 50"	£13 15 0

MOVIE MAKING ACCESSORIES

Movie Compartment Case

Ideal for Brownie and similar type 8mm. cameras — protects your camera from weather, knocks and scratches. Made from sturdy leather and lined with red velvet, it has a special compartment for film, etc. It is also fitted with a strong metal clasp and has two leather carrying straps.

PRICE: £3.10.6.

Movie Gadget Bag

A handy, inexpensive carrying bag that will protect all your movie equipment from dust, dirt and knocks, etc. Made from durable high grade plastic and finished in light tan, it has a strong shoulder strap, a full length zip fastener and metal feet for longer life. A “must” for all movie enthusiasts.

PRICE: £1.7.6.

Pass Cine Tripod

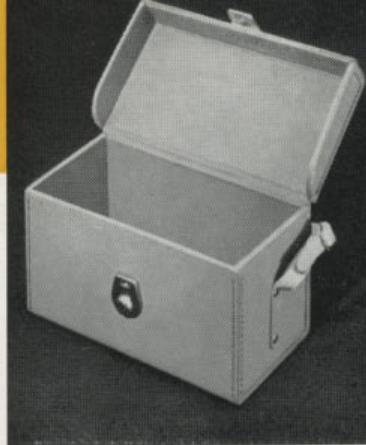
Combining the two prime essentials of a good cine tripod — rock steady support and smooth operation, the Pass tripod is ideal for all but the heaviest cine cameras. Conveniently light in weight, it provides the firm support and flexibility of operation that are essential to precision filming with either close-up devices or long focus lenses. The beautifully finished pan tilt top has a smooth gliding movement that ensures “velvety-smooth” panorams every time. The vertical tilting traverses through approximately 180° while the panning movement travels a complete circle. A convenient screw is located under the platform for storing the handle when not in use.

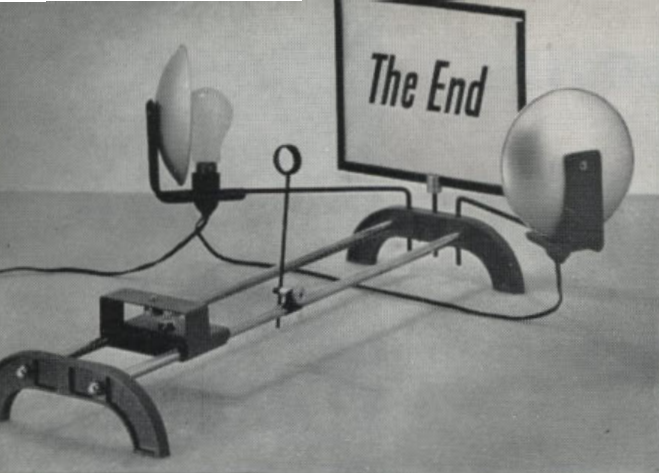
PRICE: £25.1.9.

Mobilgrip Auto-Trigger

An inexpensive device that will add versatility to, and extend the scope of, your movie camera. Designed for use with Kodak 8 movie cameras, it leaves one of your hands free to operate other camera controls, etc. Shaped like a pistol grip it screws into the tripod screw on the base of the camera. A trigger release trips the shutter with the minimum of camera movement.

PRICE: £3.0.0.





AUSTRAL CINE TITLER AND COPIER

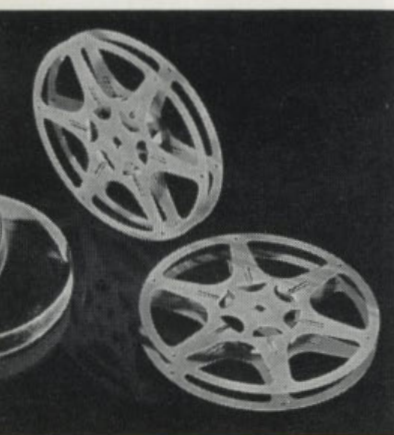
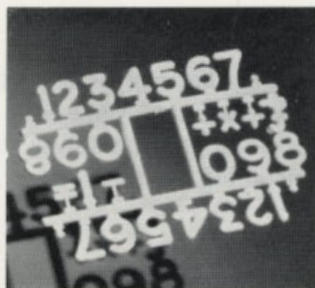
Movie titling is made easy with this compact, efficient home titling outfit. Outfit comprises: Base and camera support, camera platform, two large reflectors, frame support, platform extension block and a high quality supplementary close-up lens. Completely wired ready for use—plugs into 240 volt A.C. mains.

PRICE: £13.8.3.

AUSTRAL TITLING SETS

Give your movies that "professional look" by making your own attractive titles. In washable plastic, each set contains five complete alphabets (with capital and lower-case letters in four colours), two sets of figures (1 to 10), and miscellaneous symbols.

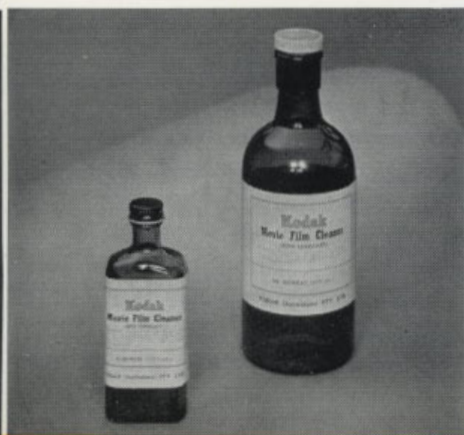
PRICES: Coloured, £1.2.0; White, 14.6.



Kodascope Reels and Cans

Ideal for convenience, safe storage and general handling of movie film—a "must" for home editing. Precisely made within the strictest of tolerances to ensure smooth running with freedom from catching and jamming. Both reels and cans are made from durable light-weight metal.

PRICES: 8mm. 200 ft., 12.6; 400 ft., 16.6; 16mm. 400 ft., 18.0; 1,600 ft., 45.0.



Kodak Movie Film Cleaner

Ideal for all types of movie film whether colour or black-and-white. It serves a double purpose in that not only does it clean away dirt and grit but it also coats the surface of the film with lubricant—this eliminates stickiness as the film passes through the gate and causes less sound distortion as it passes over the sound head.

PRICES: 4 oz., 7.6; 20 oz. £11.0.0.



Kodak Film Cement

A new and improved formula. It is easy to apply and it dries in a few seconds. Its most important feature is that it gives permanent trouble free splices—no embarrassing breaks in the middle of your well edited show. Works equally well with colour or black-and-white films. Available in three sizes.

PRICES: ½ oz., 1.6; 4 oz., 4.6; 20 oz., 11.3.

EDITING EQUIPMENT

Marguet Film Editor

A handsome, precise editing unit for use with either 8mm. or 16mm. film. It is fitted with double-gearied rewind controls, automatic universal film splicer and an adjustable optical film viewer. The complete editor folds down to compact proportions for neat storage and ready portability. Capacity is 400 ft. (8mm.), 800 ft. (16mm.). Apart from its wooden baseboard it is of sturdy metal construction with an attractive grey metallic finish.

PRICE: £28.7.0

Meopta 16 mm. Film Editor

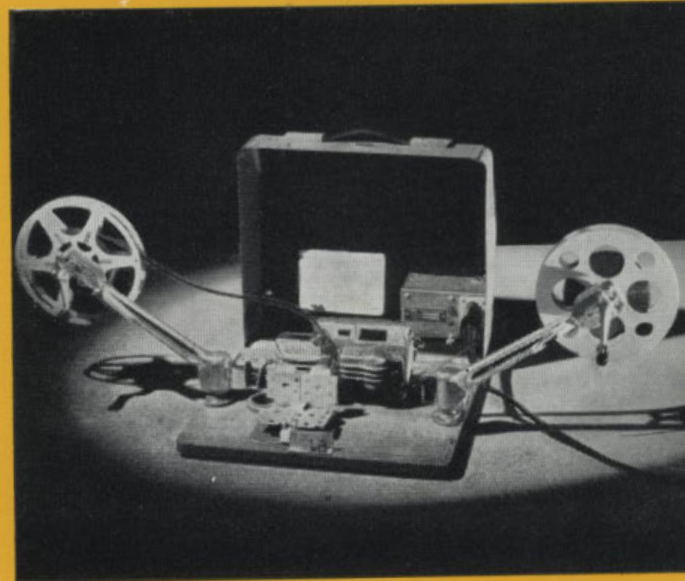
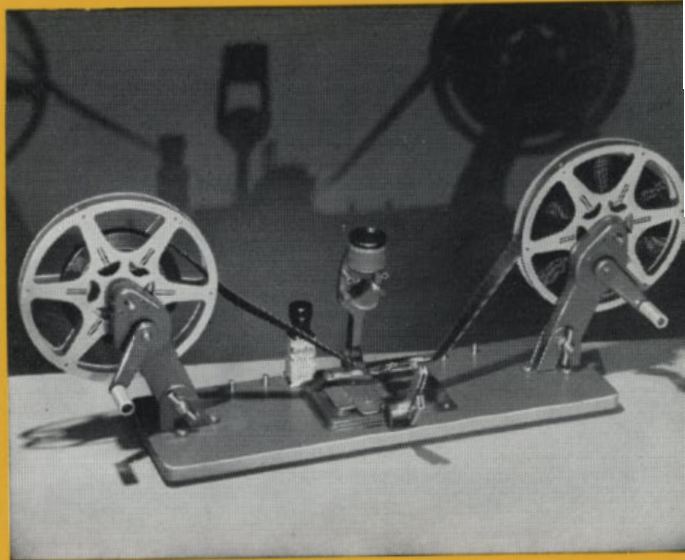
Designed for first class editing, splicing and rewinding of 16mm. movie films. Incorporates baseboard, modern precision splicer, geared rewinders, animated viewer giving a brilliant projected motion picture image, and automatic scales giving film measurements and projection times. The rewinders, which fold flat when not in use are fitted with brakes, cranks and gears; ratio of rear spindle can be set to operate at either 1:1 or 3:1. The viewer houses a 12-volt 35-watt globe powered by a built-in 240 volt transformer.

PRICE: £55.15.0.

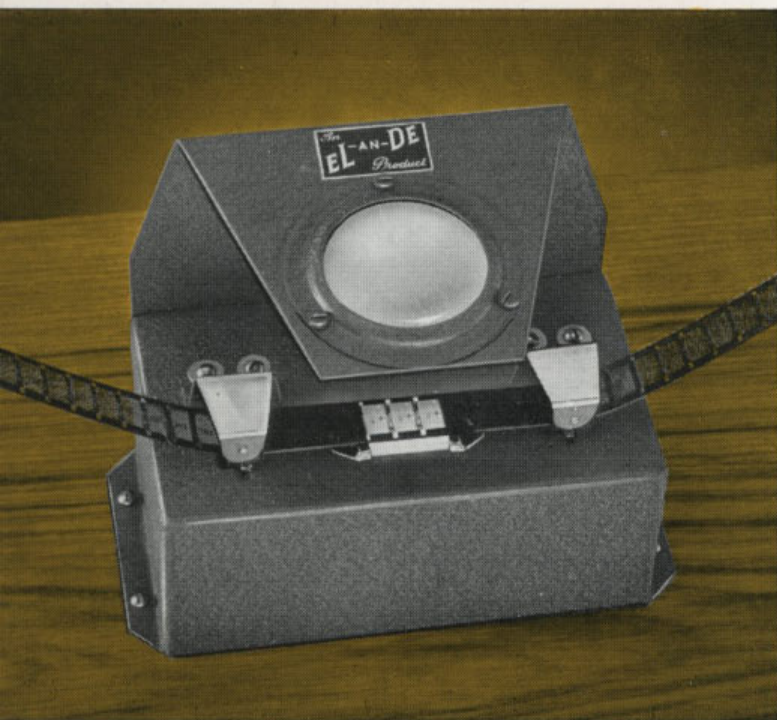
Meopta 8 mm. Film Editor Model 2 (not illustrated)

Conveniently portable, this outfit is sturdy, compact and easy to use. With film threaded and light switched on, a few turns of the geared rewind will show action clearly and brightly on the animated viewing screen; a special device notches actual frame projected (for splicing indication). Complete with a reliable built-in splicer, the whole unit folds up into a handy carrying case. Accepts 200 ft. and 400 ft. reels.

PRICE: £19.19.0.



HOME MOVIE VIEWERS



EL-AN-DE Movie Viewer

A simple and inexpensive cine viewer. An important part of your home editing outfit, it can be mounted between your rewinders and next to your splicer. Of all metal construction and finished in smart grey wrinkle-tone enamel it will accommodate 8mm., 9.5mm. or 16mm. movie films. Other features are: Large viewing glass, built in lamp, plugs into 240V mains, long life stainless steel film rollers.

PRICE: £6.6.9.

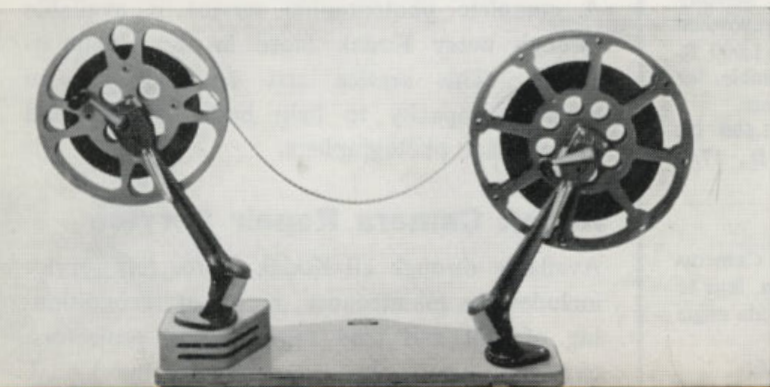


MURAY Animated Viewer With Rewinder

Features a plano-convex prism of high magnification that assures an easy-to-see picture of great brilliance. A collapsible hood is supplied for viewing in a normally lit room. Film tracks are of stainless steel. Has focusing movement and frame marking device. The complete unit is mounted on a sturdy wooden base. The rewind arms are designed to accept 400 ft. reels; the left arm is geared whilst the right is direct drive. Plugs into 240 volt A.C. current.

PRICE: £34.2.6.

REWINDERS & SPLICERS



MEOPTA REWINDER

Designed for the 16mm. movie enthusiast who requires a heavy duty rewriter of great stability; double gearing ensures smooth and rapid rewinding of small and large reels. Accepting reels up to and including 2,000 ft. it is mounted on a polished hardwood baseboard.

PRICE: £13.9.0

Marguet Universal Splicer

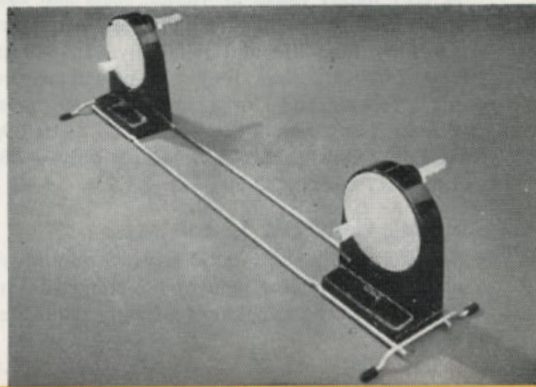
Sure and permanent splices of either 8mm., 9.5mm. or 16mm. movie film are assured when this new and efficient splicer does the job. Exact alignment and secure clean joins are its outstanding features. It is speedy in operation—first class splices can be made in about half a minute. Of sturdy all-metal precision construction.

PRICE: £5.

Marguet Automatic Universal Splicer

For use with 8mm., 9.5mm., or 16mm. film. Permits the making of first class splices in the minimum of time—thanks to its steel cutting plates and its efficient serrated-edged dry scraper. No pre-moistening is necessary. A groove across the lower left hand corner prevents any surplus film cement from spreading along the back of the film.

PRICE: £6.8.3.



KODAK REWINDER

Ideal for the beginning of your home editing outfit. Can be mounted on a baseboard, allowing space in between for a splicer and viewer. Gearer 3:1, they have "no-oil" nylon bearings.

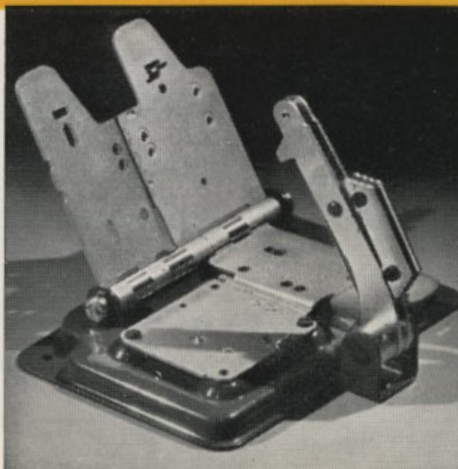
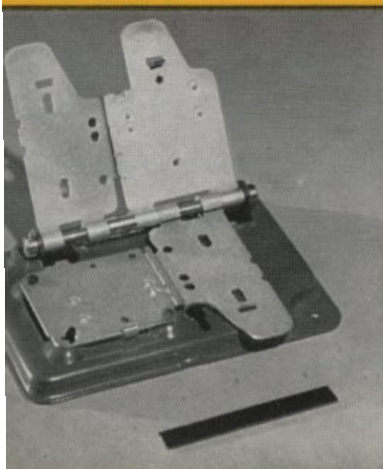
PRICE: £3.0.0

Kodak Movie Film Splicing Kit

This simple, inexpensive, easy-to-use splicing outfit makes a handy tool for emergency splicing. For use with both 8mm. and 16mm. movie film it is a "must" as an accessory for every movie projector. Consists of splicing block, handy scraper, a bottle of Kodak Film Cement, full instructions for use, and sample pieces of film for practise.

PRICE: 12.3.

KODAK 63



M. and S. Reels and Cans

A very handy range of 16mm. reels and cans. Sturdily made from finest quality light metal, they are renowned for their long life and reliability. In 800 ft., 1,600 ft. and 2,000 ft. sizes they are particularly suitable for the screening and storage of lengthy programmes.

Prices: Cans and Reels—800 ft., £1.12.0; 1,600 ft., £2.5.0; 2,000 ft., £2.14.2. Reels only—800 ft., 17.6; 1,600 ft., £1.2.6; 2,000 ft., £1.7.6.

Kodak Converter Lenses

Screw into the lens hood of Brownie Movie Cameras converts the focal length of the standard 13mm. lens to 24mm. with the telephoto and 9mm. with the wide angle converter.

Prices: Telephoto £9.5.0. Wide Angle £11.19.6.

Kodak Cine Fade Solution

Is a balanced solution of dyes for making one's own "fade-outs" in home movies. Simple to use for both black-and-white or Kodachrome films. In 8 oz. bottles.

Price: 9.0.

Kodak Lens Cleaner

Keeps lens clean, prevents the growth of fungus. In two sizes.

Prices: 1 oz. 2.3; 4 oz. 3.9.

Austral Lens Cleaning Tissue

Ideal for cleaning projection lenses. Finest quality white velvety soft tissue that will not damage the surface. In books of ten sheets.

Price: 6d.

Lubricating Oil

A highly refined oil especially made for use in projectors. Provides proper and lasting lubrication. In 1 oz. and 4 oz. bottles.

Prices: 1 oz. 2.3; 4 oz. 3.9.

Kodak Technical Service

A complete photographic service is available through every Kodak Store in the Commonwealth. This service acts essentially in an advisory capacity to help both amateur and professional photographers.

Kodak Camera Repair Service

Available through all Kodak Stores this service includes the maintenance, repair or reconditioning of still and cine cameras and projectors, exposure meters, etc., marketed by the Kodak company. Free quotations available on request.

Kodak Data Books and Leaflets

Those requiring further information upon the technical side of photographic subjects are referred to the wide range of Kodak Data Books and free leaflets which refer in great detail to many aspects only briefly covered in this book.

Kodak Colour Processing

Users of Kodachrome (still or movie), Ektachrome or Kodacolor colour films are assured the facility of uniform processing at Kodak Colour Processing Laboratories throughout the world. Also duplicate transparencies can be made from selected colour slides.

KODAK STORE ADDRESSES THROUGHOUT AUSTRALIA

ADELAIDE 37 Rundle Street
BRISBANE 250 Queen Street
CAIRNS 103 Abbott Street
HOBART 45 Elizabeth Street
LAUNCESTON 93 Brisbane Street
MELBOURNE 252 Collins Street

NEWCASTLE 9 Wolfe Street
PERTH 662 Hay Street
ROCKHAMPTON 105 East Street
SYDNEY 379-381 George Street
TOWNSVILLE 166 Flinders Street

KODAK DEALERS EVERYWHERE

All prices in this catalogue are subject to alteration without notice.

Kodak