

KODAK

Completing the Story

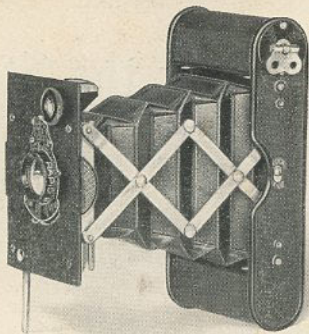
ON vacation, the record catch; at home, Junior's latest achievement—these are only two of countless story-telling incidents you'll want to keep in pictures with a Kodak. And it's all so simple the Kodak way.

As a final touch to complete the story, you can date and title as you take with any of the Kodaks or Folding Brownies listed in the following pages. The autographic attachment with which they are fitted, a feature found only on Eastman cameras, permits, with typical Kodak ease, writing a notation on the film at the time.

*There is no extra charge for
autographic film*

EASTMAN KODAK COMPANY
ROCHESTER, N. Y.

June 1923



Fixed Focus Models Vest Pocket Autographic KODAK

SO SMALL you scarcely sense it in your pocket; so easy to work you'll keep it with you to film unexpected pictures that go as quickly as they come—yet so proficient you'll want many of the negatives enlarged. Pictures $1\frac{5}{8} \times 2\frac{1}{2}$ inches.

Two models—autographic, of course. A choice of lenses in the Regular model; Kodak Anastigmat *f*.7.7 in the Vest Pocket Kodak *Special*.

SPECIFICATIONS

SIZE OF PICTURES: $1\frac{5}{8} \times 2\frac{1}{2}$ inches.

SIZE OF KODAK: $1 \times 2\frac{3}{8} \times 4\frac{3}{4}$ inches.

CAPACITY WITHOUT RELOADING: 8 exposures.

WEIGHT: 11 ounces.

FOCUS: Fixed.

LENSES: Regular—Meniscus Achromatic or Rapid Rectilinear, $3\frac{1}{2}$ -inch focus. *Special*—Kodak Anastigmat, *f*.7.7, $3\frac{1}{2}$ -inch focus.

SHUTTER: Kodak Ball Bearing No. 0, with finger release only (cable release attachment sold separately).

SPEEDS: 1/25, 1/50 second, and time and "bulb" actions.

FINDER: Brilliant; reversible for vertical or horizontal pictures.

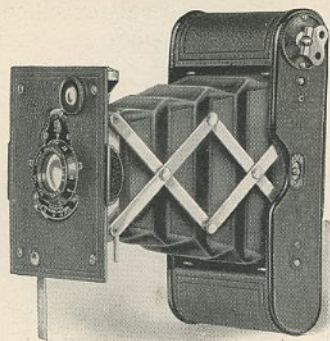
FINISH: Metal parts in nickel and black enamel. All metal body. Regular—Japan crystal finish. *Special*—Covered with Morocco grain leather. Black bellows.

MISCELLANEOUS: Autographic feature.

Prices

Vest Pocket Autographic Kodak (regular model), Meniscus Achromatic lens and Kodak Ball Bearing shutter	\$ 6.50
With Rapid Rectilinear lens, speed U. S. 8	8.00
Vest Pocket Autographic Kodak <i>Special</i> (fixed focus model), Kodak Anastigmat lens <i>f</i> .7.7, and Kodak Ball Bearing shutter	12.00
Leather Case for V. P. Kodak	.90
Soft Leather Carrying Bag	1.25
Leather Case with Carrying Strap	1.00
Belt Carrying Case (russet leather)	1.25
Autographic Film Cartridge, 8 exposures (No. A127)	.25
Vest Pocket Cable Release Attachment	.50
Vest Pocket Kodak Tripod Adapter	.50
Kodak Portrait Attachment (see page 32)	.75
Kodak Self Timer (see page 30)	1.25

The prices of cameras and film include the Excise Tax



Focusing Model
Vest Pocket Autographic
KODAK *Special*

ATURN of its mount puts the lens, Kodak Anastigmat *f*.6.9, in sharp focus through a distance range that starts at three feet, which means close-ups—head and shoulder portraits, for example—without the aid of supplementary lens equipment. This same lens gives to V. P. K. negatives a sharpness and a sparkle that assure not only excellent prints for the album, but splendid enlargements for the wall.

And all this optical excellence, remember, is in a camera so small that you can wear it.

SPECIFICATIONS

SIZE OF PICTURES: $1\frac{5}{8} \times 2\frac{1}{2}$ inches.

SIZE OF KODAK: $1 \times 2\frac{3}{8} \times 4\frac{3}{4}$ inches.

CAPACITY WITHOUT RELOADING: 8 exposures.

WEIGHT: 11 ounces.

FOCUS: Adjustable.

LENS: Kodak Anastigmat, *f*.6.9, $3\frac{1}{2}$ -inch focus.

SHUTTER: Kodak Ball Bearing No. 0, with finger release only (cable release attachment sold separately).

SPEEDS: $1/25$, $1/50$ second, and time and "bulb" actions.

FINDER: Brilliant; reversible for vertical or horizontal pictures.

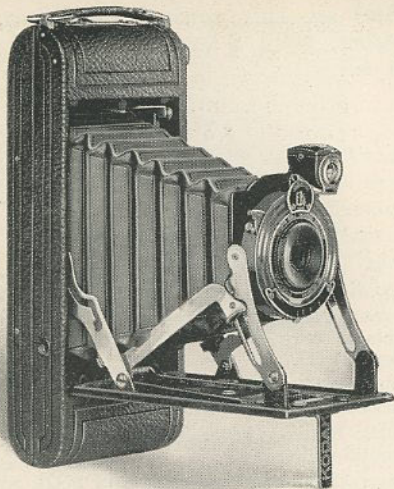
FINISH: Metal parts in nickel and black enamel. All metal body covered with Morocco grain leather. Black bellows.

MISCELLANEOUS: Autographic feature.

Prices

VEST POCKET AUTOGRAPHIC KODAK <i>Special</i> (focusing model), Kodak Anastigmat lens <i>f</i> .6.9, and Kodak Ball Bearing shutter	\$18.00
Leather Case for V. P. Kodak90
Soft Leather Carrying Bag	1.25
Leather Case with Carrying Strap	1.00
Belt Carrying Case (russet leather)	1.25
Autographic Film Cartridge, 8 exposures (No. A127)25
Vest Pocket Cable Release Attachment50
Vest Pocket Kodak Tripod Adapter50
Kodak Self Timer (see page 30)	1.25

The prices of camera and film include the Excise Tax



Fixed Focus Models
**Nos. 1 and 1A Pocket
 KODAKS, Series II**

THROUGH the self-erecting front the Pocket Kodaks bring an emphatic convenience to picture-making. Release the catch, open the camera and the lens automatically snaps into position. You're ready. The lens is fixed focus for added operating simplicity.

The autographic attachment is present, of course, and is countersunk so the camera back supports the hand while writing on the film. Two models—No. 1 for pictures $2\frac{1}{4} \times 3\frac{3}{4}$; No. 1A, $2\frac{1}{2} \times 4\frac{1}{4}$.

SPECIFICATIONS

SIZE OF PICTURES: No. 1, $2\frac{1}{4} \times 3\frac{3}{4}$ inches; No. 1A, $2\frac{1}{2} \times 4\frac{1}{4}$ inches.

SIZE OF KODAK: No. 1, $1\frac{5}{16} \times 3\frac{1}{16} \times 6\frac{7}{16}$ inches; No. 1A, $1\frac{9}{16} \times 3\frac{5}{16} \times 8$ inches.

CAPACITY WITHOUT RELOADING: No. 1, 6 exposures; No. 1A, 12 exposures.

WEIGHT: No. 1, 15 ounces; No. 1A, 23 ounces.

FOCUS: Fixed.

LENS: Single Achromatic.

SHUTTER: Kodak Ball Bearing with finger release.

SPEEDS: 1/25, 1/50 and 1/100 second as well as time and "bulb" actions.

FINDER: Brilliant; reversible for horizontal or vertical pictures.

BODY: Aluminum.

COVERING: No. 1, Levant grain leather; No. 1A, fine seal-grain leather.

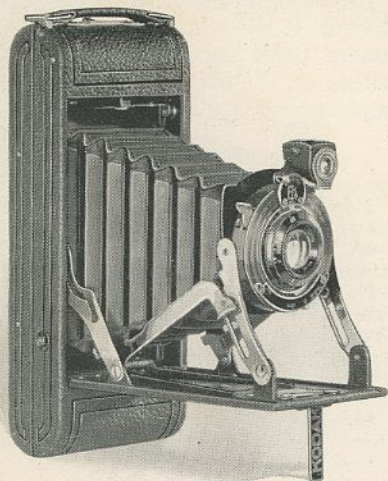
FINISH: Metal parts in nickel and black enamel. Black bellows.

MISCELLANEOUS: Autographic feature. Two tripod sockets.

Prices

POCKET KODAK, SERIES II (fixed focus), with	No. 1	No. 1A
Meniscus Achromatic lens and Kodak		
Ball Bearing shutter	\$13.50	\$15.00
Black Sole Leather Case, with strap	2.50	3.00
Autographic Film Cartridge, 12 exposures (No. A 116) for No. 1A60
Ditto, 6 exposures (No. A 120) for No. 1; (No. A 116) for No. 1A25	.30
Kodak Portrait Attachment (see page 32)75	.75
Kodak Self Timer (see page 30)	1.25	1.25
Cable Release35	.35

The prices of cameras and film include the Excise Tax



Focusing Models Nos. 1 and 1A Pocket KODAKS, Series II

COMBINING two noteworthy features—typical Series II Kodak convenience and Kodak Anastigmat *f.7.7* lens in a focusing mount—these cameras are instantly marked for ease of operation and excellence of results.

Just give the lens mount a turn and you establish accurate focus from near view

to infinity. You can leave the rest to the Kodak Anastigmat lens, Eastman-made for negatives sharp-cut, sparkling.

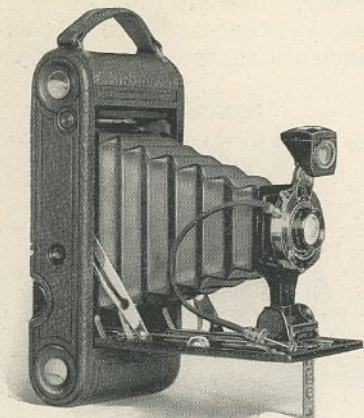
SPECIFICATIONS

SIZE OF PICTURES: No. 1, $2\frac{1}{4} \times 3\frac{1}{4}$ inches; No. 1A, $2\frac{1}{2} \times 4\frac{1}{4}$ inches.
 SIZE OF KODAK: No. 1, $1\frac{5}{16} \times 3\frac{1}{16} \times 6\frac{7}{16}$ inches; No. 1A, $1\frac{9}{16} \times 3\frac{5}{16} \times 8$ inches.
 CAPACITY WITHOUT RELOADING: No. 1, 6 exposures; No. 1A, 12 exposures.
 WEIGHT: No. 1, $16\frac{1}{2}$ ounces; No. 1A, 26 ounces.
 FOCUS: Adjustable only.
 LENS: Kodak Anastigmat, *f.7.7*—No. 1, $4\frac{1}{4}$ -inch focus; No. 1A, $5\frac{1}{4}$ -inch focus.
 SHUTTER: Kodak Ball Bearing with finger release.
 SPEEDS: $1/25$, $1/50$ and $1/100$ second, as well as time and "bulb" actions.
 FINDER: Brilliant; reversible for horizontal or vertical pictures.
 BODY: Aluminum.
 COVERING: No. 1, Levant grain leather; No. 1A, fine seal-grain leather.
 FINISH: Metal parts in nickel and black enamel. Black bellows.
 MISCELLANEOUS: Autographic feature. Two tripod sockets.

Prices

POCKET KODAK, SERIES II (focusing model),	No. 1	No. 1A
with Kodak Anastigmat lens <i>f.7.7</i> , and		
Kodak Ball Bearing shutter	\$20.00	\$22.00
Black Sole Leather Case, with strap	2.50	3.00
Autographic Film Cartridge, 12 exposures (No. A 116) for No. 1A60
Ditto, 6 exposures (No. A 120) for No. 1; (No. A 116) for No. 1A25	.30
Kodak Portrait Attachment (see page 32)75	.75
Kodak Self Timer (see page 30)	1.25	1.25
Cable Release35	.35

The prices of cameras and film include the Excise Tax



Nos. 1 and 1A Autographic KODAK Juniors

WHEN your preference is for a camera that is easy to work, easy on the pocketbook, and easy in the pocket, you generally have a Junior in mind.

While their simplicity makes photography all the easier, the pictures prove there is no sacrifice in their construction and equipment of the requisites to results.

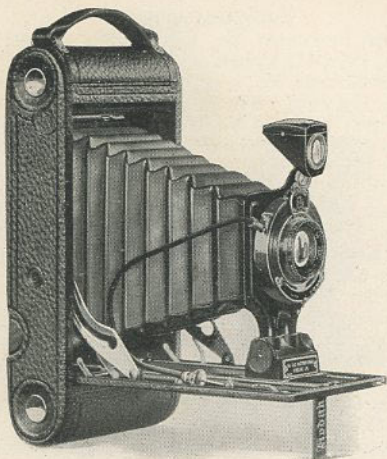
SPECIFICATIONS

- SIZE OF PICTURES: No. 1, $2\frac{1}{4} \times 3\frac{1}{4}$ inches; No. 1A, $2\frac{1}{2} \times 4\frac{1}{4}$ inches.
 SIZE OF KODAK: No. 1, $1\frac{7}{16} \times 3\frac{5}{8} \times 6\frac{5}{8}$ inches. No. 1A, $1\frac{5}{8} \times 3\frac{3}{4} \times 8$ inches.
 CAPACITY: No. 1, 6; No. 1A, 12 exposures.
 WEIGHT: No. 1, 21½ ounces; No. 1A, 27½ ounces.
 FOCUS: Fixed (with Meniscus Achromatic lens only); or Adjustable (with any listed lens).
 LENSES: Meniscus Achromatic; Rapid Rectilinear, No. 1, $4\frac{1}{4}$ -inch focus, No. 1A, $5\frac{1}{4}$ -inch focus; or Kodak Anastigmat, *f*.7.7, No. 1, $4\frac{1}{2}$ -inch focus; No. 1A, $5\frac{1}{4}$ -inch focus.
 SHUTTER: Kodak Ball Bearing. Ilex Universal with anastigmat equipment on No. 1A only.
 SPEEDS: No. 1, 1/25, 1/50 second; with Kodak Anastigmat lens *f*.7.7, 1/25, 1/50 and 1/100 second; No. 1A, 1/25, 1/50 and 1/100 second. Ilex Universal, seven, 1/100 to 1 second. Both with time and "bulb" actions.
 FINDER: Brilliant; reversible for vertical or horizontal pictures.
 FINISH: Metal parts in nickel and black enamel. Body covered with fine seal-grain leather. Black bellows. Autographic feature. Two tripod sockets.

Prices

AUTOGRAFIC KODAK JUNIOR (fixed focus)	No. 1	No. 1A
Meniscus Achromatic lens and Kodak Jr.	Jr.	Jr.
Ball Bearing shutter	\$12.00	\$13.00
Focusing model, with scale	12.00	13.00
With Rapid Rectilinear lens	14.00	15.00
With Kodak Anastigmat lens <i>f</i> .7.7	19.00	20.00
With Kodak Anastigmat lens <i>f</i> .7.7 and Ilex Universal Shutter		24.00
Black Sole Leather Case, with strap	3.00	3.00
Soft Leather Bag, with strap	1.75	2.00
Autographic Film Cartridge, 12 exposures (No. A 116) for No. 1A60
Ditto, 6 exposures (No. A 120) for No. 1; (No. A 116) for No. 1A25	.30
Kodak Portrait Attachment (see page 32)75	.75
Kodak Self Timer (see page 30)	1.25	1.25

The prices of cameras and film include the Excise Tax



Nos. 2C and 3A Autographic KODAK Juniors

IN THESE two Juniors, picture size has been secured without camera bulk. Both are genuinely compact and photographically complete, as well. Like all Juniors, ease of operation is a dominant feature.

There's honest value in any of the three lens equipments offered, but either model is well worth securing with Kodak Anastigmat lens *f.7.7*.

SPECIFICATIONS

SIZE OF PICTURES: No. 2C, $2\frac{7}{8} \times 4\frac{7}{8}$ inches; No. 3A, $3\frac{1}{4} \times 5\frac{1}{2}$ inches.

SIZE OF KODAK: No. 2C, $1\frac{3}{4} \times 4\frac{3}{8} \times 8\frac{3}{4}$ inches; No. 3A, $1\frac{1}{8} \times 5\frac{1}{8} \times 9\frac{3}{4}$ inches.

CAPACITY WITHOUT RELOADING: Both, 10 exposures.

WEIGHT: No. 2C, 34 ounces; No. 3A, 37 ounces.

FOCUS: Adjustable only with automatic focusing lock.

LENSES: Meniscus Achromatic; Rapid Rectilinear, No. 2C, $5\frac{1}{2}$ -inch focus, No. 3A, $6\frac{3}{4}$ -inch focus; or Kodak Anastigmat, *f.7.7*, No. 2C, $5\frac{1}{2}$ -inch focus, No. 3A, $6\frac{3}{4}$ -inch focus.

SHUTTER: Kodak Ball Bearing. Ilex Universal with anastigmat equipment only.

SPEEDS: Kodak Ball Bearing, 1/25, 1/50 and 1/100 second. Ilex Universal, 1, 1/2, 1/5, 1/10, 1/25, 1/50 and 1/100 second. Both with time and "bulb" actions.

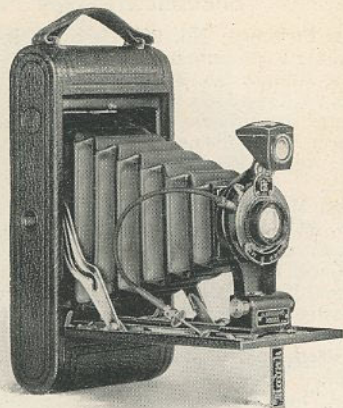
FINDER: Brilliant; reversible for vertical or horizontal pictures.

FINISH: Back and bed of aluminum, covered with fine seal-grain leather. Metal parts finished in nickel and black enamel. Black bellows. Autographic feature. Two tripod sockets.

Prices

AUTOGRAPHIC KODAK JUNIOR, with Meniscus No. 2C No. 3A		
Achromatic lens and Kodak Ball Bearing shutter	\$16.00	\$17.50
With Rapid Rectilinear lens	18.00	20.00
With Kodak Anastigmat lens <i>f.7.7</i>	23.00	25.00
With Kodak Anastigmat lens <i>f.7.7</i> , and Ilex Universal shutter	27.00	29.00
Black Sole Leather Case, with strap	3.25	3.75
Soft Leather Carrying Bag, with strap	2.25	2.50
Autographic Film Cartridge, 10 exp. (No. A 130) for No. 2C; (No. A 122) for No. 3A	.75	.90
Ditto, 6 exposures	.45	.55
Kodak Portrait Attachment (see page 32)	.75	.75
Kodak Self Timer (see page 30)	1.25	1.25

The prices of cameras and film include the Excise Tax



No. 1A Autographic KODAK

AN ALL-ROUND kind of a camera is the 1A Kodak. First, its picture size and proportions, $2\frac{1}{2} \times 4\frac{1}{4}$, are well adapted for the general run of subjects; second, it's compact enough to drop in your pocket and dismiss from your mind till the picture; third, it's easy to work.

A most reliable camera that you'll soon learn to depend upon.

Kodak Anastigmat, $f.7.7$, is among the lens equipments offered. It gives you sharp, clean-cut negatives from which it is a pleasure to print.

SPECIFICATIONS

SIZE OF PICTURES: $2\frac{1}{2} \times 4\frac{1}{4}$ inches.

SIZE OF KODAK: $1\frac{5}{8} \times 3\frac{3}{4} \times 8$ inches.

CAPACITY WITHOUT RELOADING: 12 exposures.

WEIGHT: 27 ounces.

FOCUS: Adjustable only, with automatic focusing lock.

LENSES: Rapid Rectilinear, $5\frac{1}{4}$ -inch focus; or Kodak Anastigmat, $f.7.7$, $5\frac{1}{4}$ -inch focus.

SHUTTER: Kodak Ball Bearing, with cable and finger release

SPEEDS: $1/25$, $1/50$ and $1/100$ second, and time and "bulb" actions.

FINDER: Brilliant; reversible for vertical or horizontal pictures.

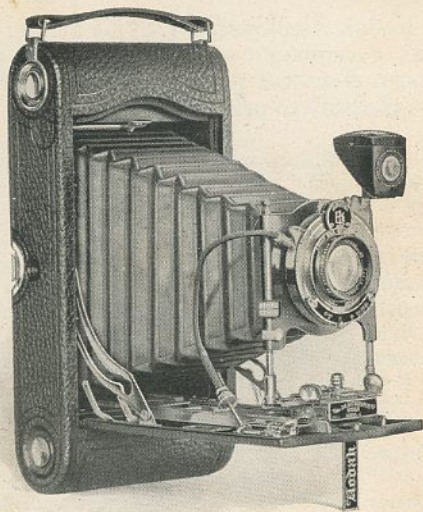
FINISH: Metal parts in nickel and black enamel. Back and bed of aluminum, covered with Levant grain leather. Black bellows.

MISCELLANEOUS: Autographic feature. Two tripod sockets.

Prices

No. 1A AUTOGRAPHIC KODAK, with Rapid Rectilinear lens and Kodak Ball Bearing shutter	\$19.00
With Kodak Anastigmat lens $f.7.7$	24.00
Black Sole Leather Case, with strap	3.00
Soft Leather Carrying Bag, with strap	2.00
Autographic Film Cartridge, 12 exposures (No. A 116)60
Ditto, 6 exposures30
Kodak Portrait Attachment (see page 32)75
Kodak Self Timer (see page 30)	1.25

The prices of cameras and film include the Excise Tax



Nos. 3 and 3A Autographic KODAKS

AS EVIDENCE of the complete camera appointments which distinguish both of these models, standard equipment includes the rising and sliding front.

More distinctive yet, however, is the fact that on both cameras the Combination Back is available as extra equipment, permitting use of Kodak Cut Film or plates, with ground glass focusing.

SPECIFICATIONS

SIZE OF PICTURES: No. 3, $3\frac{1}{4} \times 4\frac{1}{4}$ inches; No. 3A, $3\frac{1}{4} \times 5\frac{1}{2}$ inches.

SIZE OF KODAK: No. 3, $1\frac{3}{4} \times 4\frac{1}{2} \times 7\frac{1}{2}$ inches; No. 3A, $2 \times 4\frac{3}{4} \times 9\frac{1}{2}$ inches.

CAPACITY: No. 3, 12; No. 3A, 10 exposures.

WEIGHT: No. 3, 30 ounces; No. 3A, 41 ounces.

FOCUS: Adjustable with automatic focusing lock; No. 3A has double scale for film or plates.

LENSES: For details see price list below.

SHUTTER: Kodak Ball Bearing, $1/25$, $1/50$ and $1/100$ second; Ilex Universal on 3A with Anastigmat equipment only, seven speeds, $1/100$ to 1 second. Time and "bulb" actions. Cable and finger release on both.

FINDER: Brilliant; reversible.

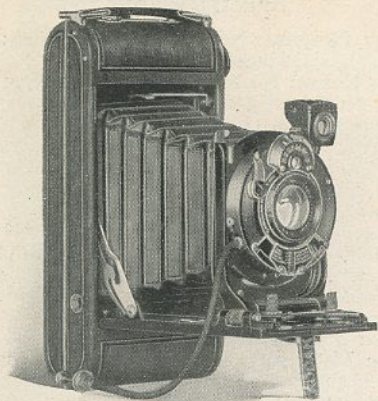
FINISH: Metal parts in nickel and black enamel. Back and bed of aluminum, covered with seal grain leather. Black bellows.

MISCELLANEOUS: Autographic feature. Two tripod sockets. Rising, falling, and sliding front.

Prices

	No. 3	No. 3A
AUTOGRAFIC KODAK, Rapid Rectilinear lens, $5\frac{1}{4}$ -inch focus on No. 3; $6\frac{1}{2}$ -inch focus on No. 3A; Kodak Ball Bearing shutter	\$19.00	\$22.50
With Kodak Anastigmat lens, $f.7.7$, $5\frac{1}{4}$ -inch focus on No. 3; $6\frac{1}{2}$ -inch focus on No. 3A	24.00	27.50
With Kodak Anastigmat lens $f.7.7$ and Ilex Universal shutter		31.50
Black Sole Leather Case, with strap	3.50	4.00
Soft Leather Carrying Bag	2.25	2.50
Combination Back	4.00	4.00
Double Glass Plate Holders, each	1.50	1.50
Kodak Cut Film Sheaths, each	.10	.15
Kodak Cut Film, package of 12	.67	.93
Autographic Film Cartridge, 12 exposures (No. A 118) for No. 3; 10 exposures (No. A 122) for No. 3A	.90	.90
Ditto, 6 exposures	.45	.55
Kodak Portrait Attachment (see page 32)	.75	.75
Kodak Self Timer (see page 30)	1.25	1.25

The prices of cameras and film include the Excise Tax



No. 1 Autographic KODAK *Special*

WITH the seven speed Kodamatic Shutter and the fast Kodak Anastigmat lens *f*.6.3 the No. 1 *Special* is fitted for a picture range usually expected in large cameras only, yet it is so cleverly compact you scarcely feel it in your pocket.

Even under unfavorable conditions, the No. 1 *Special* may be counted on to bring home the picture if it's a possible thing.

SPECIFICATIONS

SIZE OF PICTURES: $2\frac{1}{4} \times 3\frac{1}{4}$ inches.

SIZE OF KODAK: $1\frac{5}{16} \times 3\frac{1}{16} \times 6\frac{7}{16}$ inches.

CAPACITY WITHOUT RELOADING: 6 exposures.

WEIGHT: 18 ounces.

FOCUS: Adjustable only, with screw focusing device.

LENSES: For details see price list below.

SHUTTER: Kodamatic, with cable release.

SPEEDS: Seven, from 1/200 to 1/2 second with time and "bulb" actions.

FINDER: Brilliant; reversible for vertical or horizontal pictures.

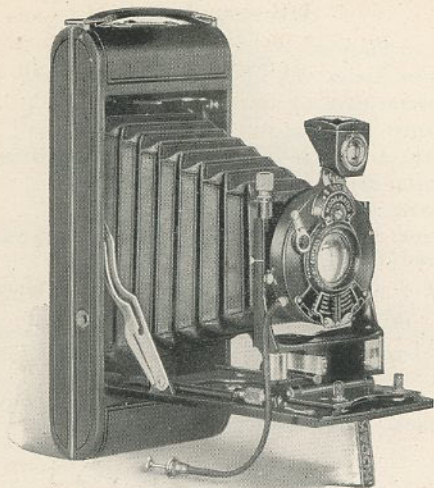
FINISH: Metal parts in nickel and black enamel. Aluminum body covered with finest quality genuine sealskin. Black leather bellows.

MISCELLANEOUS: Autographic feature, counter-sunk. Two tripod sockets.

Prices

No. 1 AUTOGRAPHIC KODAK <i>Special</i> , with Kodak Anastigmat lens <i>f</i> .6.3, $4\frac{1}{2}$ -inch focus and Kodamatic shutter	\$50.00
No. 1 AUTOGRAPHIC KODAK <i>Special</i> , with Bausch & Lomb Kodak Anastigmat lens <i>f</i> .6.3, No. 1, $4\frac{1}{2}$ -inch focus, and Kodamatic shutter	62.00
No. 1 AUTOGRAPHIC KODAK <i>Special</i> , with Bausch & Lomb Tessar Series IIb. lens <i>f</i> .6.3, No. 3, $4\frac{1}{2}$ -inch focus, and Kodamatic shutter	74.00
No. 1 AUTOGRAPHIC KODAK <i>Special</i> , with Bausch & Lomb Tessar Series Ic. lens <i>f</i> .4.5, No. 12, $3\frac{1}{2}$ -inch focus, and Kodamatic shutter	71.00
Long-grain Leather, Velvet-lined Case, with strap	3.75
Autographic Film Cartridge. 6 exposures (No. A 120)25
Kodak Portrait Attachment (see page 32)75
Kodak Self Timer (see page 30)	1.25

The prices of cameras and film include the Excise Tax



No. 2C Autographic KODAK *Special*

HERE'S a new model Kodak built for superior work in the $2\frac{7}{8} \times 4\frac{7}{8}$ inch size, a generous proportion that lets the picture in.

Notable among its features are the lens and shutter. The fast Kodak Anastigmat, *f*.6.3, is splendidly supported by the Kodamatic shutter with seven speeds

from 1/150 to 1/2 second—an Eastman-made combination that unites optical excellence with mechanical accuracy for better pictures.

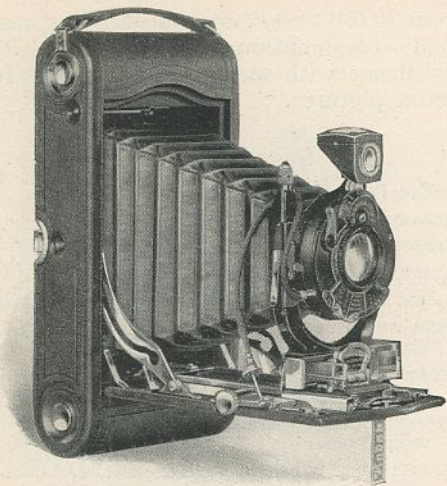
SPECIFICATIONS

- SIZE OF PICTURES: $2\frac{7}{8} \times 4\frac{7}{8}$ inches.
 SIZE OF KODAK: $1\frac{9}{16} \times 8\frac{3}{4} \times 3\frac{7}{8}$ inches.
 CAPACITY WITHOUT RELOADING: 10 exposures.
 WEIGHT: 32 ounces.
 FOCUS: Adjustable only with screw focusing device.
 LENS AND SHUTTER: Kodak Anastigmat, *f*.6.3.
 Kodamatic shutter with cable release.
 SPEEDS: Seven, from 1/150 to 1/2 second, with time and "bulb" actions.
 FINDER: Brilliant; reversible for horizontal or vertical pictures.
 FINISH: Aluminum body covered with finest quality genuine sealskin. Metal parts finished in nickel and black enamel. Black leather bellows.
 MISCELLANEOUS: Autographic feature. Two tripod sockets. Range Finder. Rising and falling front.

Prices

No. 2C AUTOGRAPHIC KODAK <i>Special</i> , with Kodak Anastigmat lens <i>f</i> .6.3, 6-inch focus, and Kodamatic shutter	\$65.00
Long-grain Leather, Velvet-lined Case, with strap	5.00
Autographic Film Cartridge, 10 exposures (No. A 130)75
Ditto, 6 exposures45
Kodak Portrait Attachment (see page 32)75
Kodak Self Timer (see page 30)	1.25

The prices of camera and film include the Excise Tax



Nos. 1A and 3A Autographic KODAKS *Special*

USED in connection with these Kodaks the designation *Special* is emphatically appropriate. Throughout they are just as fine cameras as can be made.

Among the features that stamp them of the superior sort are Kodak Anastigmat lens *f*.6.3, and Kodamatic shutter with seven adjustable speeds. When equipped with the Combination Back No. 3A can be used with Kodak Cut Film, or plates if desired.

SPECIFICATIONS

SIZE OF PICTURES: No. 1A, $2\frac{1}{2} \times 4\frac{1}{4}$ inches; No. 3A, $3\frac{1}{4} \times 5\frac{1}{2}$ inches.

SIZE OF KODAK: No. 1A, $1\frac{5}{8} \times 3\frac{3}{4} \times 8$ inches; No. 3A, $2 \times 4\frac{3}{4} \times 9\frac{1}{2}$ inches.

CAPACITY: No. 1A, 12; No. 3A, 10 exposures.

WEIGHT: No. 1A, 34 ounces; No. 3A, 42 ounces.

FOCUS: Adjustable—Kodak Range Finder and rack and pinion for focusing; also regular focusing scale.

LENSES AND SHUTTERS: See price heading below.

SPEEDS: Kodamatic, seven; No. 1A from $1/200$ to $1/2$ second; No. 3A from $1/150$ to $1/2$ second.

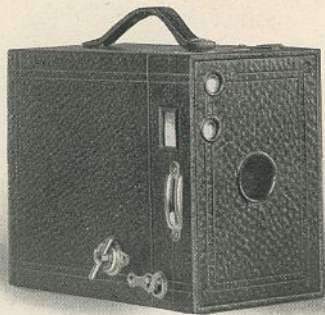
FINDER: Brilliant; reversible.

FINISH: Aluminum body. No. 1A covered with finest long-grain calf. No. 3A, with genuine Persian Morocco. Black leather bellows. Autographic feature. Two tripod sockets. Rising and falling front.

Prices

AUTOGRAPHIC KODAK <i>Special</i> with Kodak Anastigmat <i>f</i> .6.3 lens, and Kodamatic shutter; No. 1A, 5-inch focus; No. 3A, $6\frac{3}{4}$ -inch focus			No. 1A	No. 3A
With Ilex or Optimo shutter			\$60.00	\$70.00
With Bausch & Lomb Kodak Anastigmat <i>f</i> .6.3 lens No. 2, $5\frac{1}{4}$ -inch focus on No. 1A; Lens No. 4, $6\frac{3}{4}$ -inch focus on No. 3A; Kodamatic shutter			50.00	60.00
With Ilex Acme or Optimo shutter			73.00	90.00
With Bausch & Lomb Tessar Series IIb, <i>f</i> .6.3 lens No. 4, $5\frac{1}{4}$ -inch focus on No. 1A; Lens No. 5K, $7\frac{1}{4}$ -inch focus on No. 3A; Kodamatic shutter			63.00	80.00
With Ilex Acme or Optimo shutter			81.00	100.00
Grain Leather, Velvet-lined Case with strap			71.00	90.00
Soft Leather Carrying Bag			4.50	5.25
Combination Back			2.00	2.50
Double Glass Plate Holders, each				5.00
Kodak Cut Film Sheaths, each				1.50
Kodak Cut Film, package of 1215
Autographic Film Cartridge, 12 exposures, No. 1A (No. A 116), No. 3A, 10 exposures (No. A 122)93
Ditto, 6 exposures60	.90
Kodak Portrait Attachment (see page 32)30	.55
Kodak Self Timer (see page 30)75	.75
			1.25	1.25

The prices of cameras and film include the Excise Tax



Nos. 0, 2, 2A, 3 and 2C BROWNIES

BECAUSE they make good pictures the easiest way at the smallest cost, Brownies find universal favor. As playmates for the children and as companions for the grown-ups, the Brownies belong. They differ in size but they are alike in dependability.

SPECIFICATIONS

SIZE OF PICTURES: No. 0, $1\frac{5}{8} \times 2\frac{1}{2}$ inches; No. 2, $2\frac{1}{4} \times 3\frac{1}{4}$ inches; No. 2A, $2\frac{1}{2} \times 4\frac{1}{4}$ inches; No. 2C, $2\frac{7}{8} \times 4\frac{7}{8}$ inches; No. 3, $3\frac{1}{4} \times 4\frac{1}{4}$ inches.

SIZE OF CAMERAS: No. 0, $2\frac{5}{8} \times 3\frac{3}{8} \times 4\frac{7}{8}$ inches; No. 2, $3\frac{1}{4} \times 4 \times 5\frac{5}{8}$ inches; No. 2A, $3\frac{1}{8} \times 5\frac{1}{8} \times 6\frac{1}{8}$ inches; No. 2C, $3\frac{7}{8} \times 6\frac{1}{4} \times 7\frac{1}{4}$ inches; No. 3, $4\frac{3}{8} \times 5\frac{1}{8} \times 6\frac{1}{8}$ inches.

CAPACITY WITHOUT RELOADING: No. 0, 8 exposures; No. 2, 6 exposures; No. 2A, 12 exposures; No. 2C, 10 exposures; No. 3, 12 exposures.

WEIGHT: No. 0, 8 ounces; No. 2, $15\frac{1}{2}$ ounces; No. 2A, $19\frac{1}{2}$ ounces; No. 2C, 28 ounces; No. 3, 25 ounces.

FOCUS: Fixed only.

LENSES: Nos. 0 and 2, Meniscus; Nos. 2A, 2C and 3, Meniscus Achromatic.

SHUTTERS: No. 0, Eastman Rotary, one stop and time action; Nos. 2, 2A, 3 and 2C, Eastman Rotary, 3 stops and time action.

FINDERS: Two ground glass, for vertical or horizontal pictures.

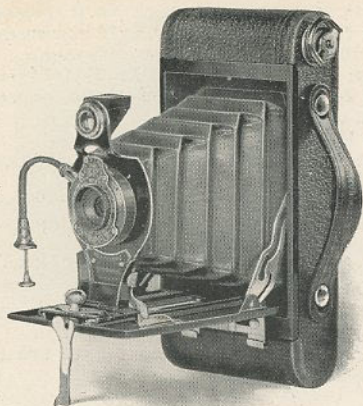
FINISH: Metal parts in nickel and black enamel. Body covered with imitation leather.

MISCELLANEOUS: Nos. 2C and 3 have two tripod sockets.

Prices

	No.0	No.2	No.2A	No.3	No.2C
Nos. 0 and 2 Brownie Cameras, Meniscus lenses, Eastman Rotary shutters	\$2.00	\$2.50			
Nos. 2A, 3 and 2C Brownie Cameras, Meniscus Achromatic lenses, Eastman Rotary shutters			\$3.50	\$4.50	\$5.00
Brownie Carrying Case, with strap (No. 0, without strap)	1.00	1.25	1.50	1.60	1.60
N. C. Film Cartridge, 8 exposures, $1\frac{1}{8} \times 2\frac{1}{2}$ (No. 127) for No. 0		.25			
Ditto, 6 exposures, $2\frac{1}{4} \times 3\frac{1}{4}$ (No. 120) for No. 2			.25		
Ditto, 12 exposures, $2\frac{1}{2} \times 4\frac{1}{4}$ (No. 116) for No. 2A; $3\frac{1}{4} \times 4\frac{1}{4}$ (No. 124) for No. 3				.60	.90
Ditto, 6 exposures				.30	.45
Ditto, 10 exposures, $2\frac{7}{8} \times 4\frac{7}{8}$ (No. 130) for No. 2C					.75
Brownie Tripod Adapter	.25	.25	.25		
Kodak Portrait Attachment (See page 32)	.75	.75	.75	.75	.75

The prices of cameras and film include the Excise Tax



Nos. 2 and 2A Folding Autographic BROWNIES

TO DESCRIBE these cameras in brief, two words immediately suggest themselves—*simple* and *substantial*. Look at the prices on the next page and you'll add—*inexpensive*. Adjustable focus, tested lenses and Kodak Ball Bearing shutter prove them equipped for pictures—good pictures. They are autographic, too, an exclusively Eastman touch.

SPECIFICATIONS

SIZE OF PICTURES: No. 2, $2\frac{1}{4} \times 3\frac{1}{4}$ inches; No. 2A, $2\frac{1}{2} \times 4\frac{1}{4}$ inches.

SIZE OF CAMERAS: No. 2, $1\frac{1}{4} \times 3\frac{1}{8} \times 6\frac{1}{2}$ inches; No. 2A, $1\frac{1}{16} \times 3\frac{3}{8} \times 7\frac{1}{8}$ inches.

CAPACITY WITHOUT RELOADING: No. 2, 6 exposures; No. 2A, 12 exposures.

WEIGHT: No. 2, 19 ounces; No. 2A, $25\frac{1}{2}$ ounces.

FOCUS: Adjustable, with automatic focusing lock.

LENSES: Meniscus Achromatic; or Rapid Rectilinear; No. 2, $3\frac{3}{4}$ -inch focus; No. 2A, 5-inch focus.

SHUTTER: Kodak Ball Bearing, with cable and finger release.

SPEEDS: No. 2, $1/25$ and $1/50$ second; No. 2A, $1/25$, $1/50$ and $1/100$ second, with time and "bulb" actions.

FINDER: Ground glass; reversible for vertical or horizontal pictures.

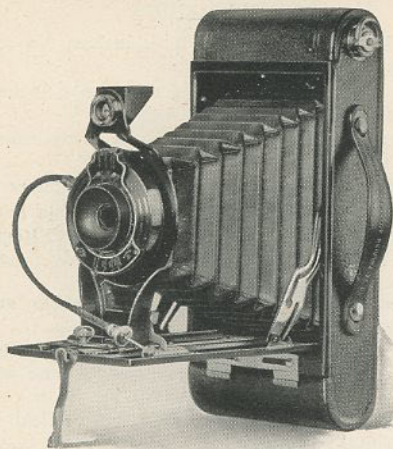
FINISH: Metal parts finished in nickel and black enamel. Metal body covered with durable imitation leather. Black bellows.

MISCELLANEOUS: Autographic feature. Two tripod sockets.

Prices

FOLDING AUTOGRAPHIC BROWNIE, with Meniscus Achromatic lens and Kodak Ball Bearing shutter	No. 2	No. 2A
With Rapid Rectilinear lens	\$ 9.00	\$10.00
Carrying Case for Folding Autographic Brownie, with strap	1.50	1.60
Autographic Film Cartridge, 12 exposures (No. A 116) for No. 2A60
Ditto, 6 exposures (No. A 120) for No. 225	
Ditto, 6 exposures (No. A 116) for No. 2A30
Kodak Portrait Attachment (see page 32)75	.75
Kodak Self Timer (see page 30)	1.25	1.25

The prices of cameras and film include the Excise Tax



Nos. 2C and 3A Folding Autographic BROWNIES

LARGE in pictures, small in price, and fitted for results you will be proud to show. The tested lenses yield pleasing pictures; the Kodak Ball Bearing shutters have snapshot speeds of 1/25, 1/50, and 1/100 second. Made in Eastman workshops, the cameras are built to last.

SPECIFICATIONS

SIZE OF PICTURES: No. 2C, $2\frac{7}{8} \times 4\frac{7}{8}$ inches; No. 3A, $3\frac{3}{4} \times 5\frac{1}{2}$ inches.

SIZE OF CAMERAS: No. 2C, $1\frac{3}{4} \times 3\frac{3}{4} \times 8\frac{11}{16}$ inches; No. 3A, $1\frac{11}{16} \times 4\frac{5}{16} \times 9\frac{5}{16}$ inches.

CAPACITY WITHOUT RELOADING: 10 exposures.

WEIGHT: No. 2C, 27 ounces; No. 3A, 32 ounces.

FOCUS: Adjustable, with automatic focusing lock.

LENSES: Meniscus Achromatic, or Rapid Rectilinear; No. 2C, $5\frac{1}{2}$ -inch focus; No. 3A, $6\frac{1}{4}$ -inch focus.

SHUTTER: Kodak Ball Bearing with cable and finger release.

SPEEDS: 1/25, 1/50 and 1/100 second; and time and "bulb" actions.

FINDER: Ground glass; reversible for vertical or horizontal pictures.

FINISH: Metal parts finished in nickel and black enamel. Metal body covered with durable imitation leather. Black bellows.

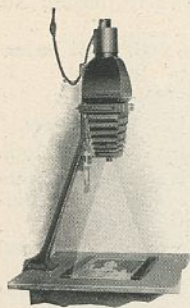
MISCELLANEOUS: Autographic feature. Two tripod sockets.

Prices

FOLDING AUTOGRAPHIC BROWNIE with Meniscus Achromatic lens and Kodak Ball Bearing shutter	No. 2C \$13.00	No. 3A \$14.50
With Rapid Rectilinear lens	15.00	17.00
Carrying Case, with strap	1.70	1.80
Autographic Film Cartridge, 10 exposures, $2\frac{7}{8} \times 4\frac{7}{8}$ (No. A 130) for No. 2C; 10 exposures, $3\frac{3}{4} \times 5\frac{1}{2}$ (No. A 122) for No. 3A75	.90
Ditto, 6 exposures45	.55
Kodak Portrait Attachment (see page 32)75	.75
Kodak Self Timer (see page 30)	1.25	1.25

The prices of cameras and film include the Excise Tax

Kodak Auto-Focus Enlarger



THIS up-to-date amateur camera makes enlarging as easy and almost as fast as contact printing. As you slide the camera up or down the image size increases or grows smaller, but the focus, automatically controlled, stays sharp.

Attaches to any table top and makes prints from $1\frac{1}{2}$ to $3\frac{1}{2}$ times their dimensions from negatives up to 4 x 6 inches. Largest print possible, 14 x 21 inches. A Mazda lamp (not supplied) of from 75 to 200 watts is required for printing. A diffusing disc is supplied separately for soft focus effects.

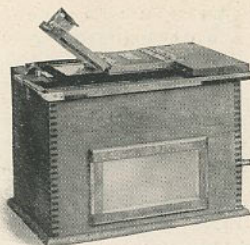
Kodak Auto-Focus Enlarger with Kodak Anastigmat lens, electric cord and plug, set of six flexible metal masks (with Excise Tax included) . . . \$35.00
Diffusing Disc . . . 1.00

Kodak Self Timer

ATACHES to any cable release and "clicks" the shutter so you can be in the picture. You can set it to operate at any interval from $1/2$ second to one minute.

Kodak Self Timer . . . \$ 1.25

Kodak Amateur Printer



AN AUTOMATIC masking device on the top of the printer holds the negative firmly and gives the print a white margin. The light inside the box is switched on as the hinged top presses the paper in contact with the negative. A

red bulb gives light for adjusting negatives.

The Printer with $5\frac{1}{2}$ feet of electric cord and plug, but without Mazda printing light . . . \$10.00

Kodak Cut Film

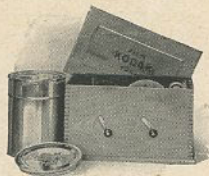
THE qualities of non-halation, fine grain, ample gradation and exceptionally wide latitude make Kodak Cut Film superior to plates. In addition, it is light, easy to handle and unbreakable. Both regular and *Special* models of the Nos. 3 and 3A Kodaks are adapted for its use when equipped with the Combination Back and Kodak Cut Film Sheaths.

Regular Kodak Cut Film is equal in speed to fast plates. While Kodak Cut Film *Super Speed* retains the quality of regular emulsions, it is emphatically faster to cope with difficult light conditions and when extra-short exposures are required.

	$3\frac{1}{4} \times 4\frac{1}{4}$	$3\frac{1}{4} \times 5\frac{1}{2}$
Kodak Cut Film, per doz.	\$.67	\$.93
Kodak Cut Film <i>Super Speed</i> , per doz.77	1.03

Prices of film include the Excise Tax

Kodak Film Tanks



AS FAR as correct development goes the Kodak Film Tank method puts the novice on par with the professional. Just follow the simple instructions. The box does darkroom duty—the experience is inside. All by daylight.

Kodak Film Tanks, \$3.00 up.

Kodak Tank Developer Powders, per $\frac{1}{2}$ dozen, 20 cents to 30 cents.

Kodak Acid Fixing Powder, per lb., 25 cents.

Kodak Portrait Attachment

SLIPS over the regular lens so you can get sharp focus at short range. There is no change in the operation of the camera. Simply place the subject close up and expose as usual. Adapted for head and shoulder portraits and for general "close-up" photography.



Kodak Portrait Attachment \$.75

Kodak Diffusion Portrait Attachment

SIMILAR to the Kodak Portrait Attachment except that instead of yielding sharp images close up the focus is diffused and the lines in the picture made pleasingly soft.

Kodak Diffusion Portrait Attachment . . \$1.25 and \$1.50

According to size

BOSTON STORE
STATE, MADISON AND DEARBORN STS.
CHICAGO, ILL.