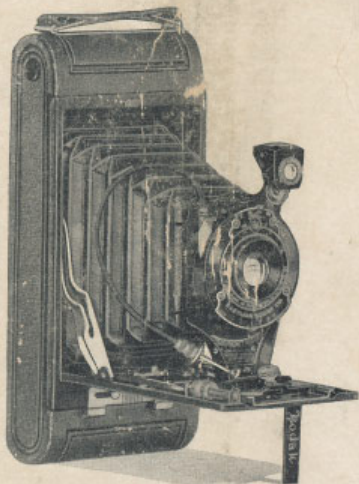


Picture taking with the
Nos. 1 and 1A
Pocket Kodaks

Kodak Anastigmat
Lens $f.6.3$



"Kodak"

TRADE MARK
1888

EASTMAN KODAK COMPANY
ROCHESTER, N. Y.

Manufacturers of

KODAK BROWNIE AND
HAWK-EYE CAMERAS
CINÉ-KODAKS KODASCOPIES
KODAK FILM VELOX SOLIO
EASTMAN BROMIDE PAPERS

KODAK FILM TANKS
EASTMAN TESTED CHEMICALS
KODAK DRY MOUNTING TISSUE
TRIPODS AND OTHER PHOTO-
GRAPHIC MATERIALS

Trade Marks Reg. U. S. Pat. Off.

November, 1926.

"KODAKERY"

A monthly magazine that teaches how to make better pictures, will be sent FREE OF CHARGE to anyone who buys one of our amateur cameras from a dealer in photographic goods, if this blank is filled out and sent to us within 30 days from the date the camera was bought.

EASTMAN KODAK COMPANY.

TO THE EASTMAN KODAK COMPANY,
ROCHESTER, NEW YORK:

Accepting your offer, please put my name on the mailing list for "KODAKERY" (with the understanding that there is to be no cost to me), I having bought a

.....
(Kind of Camera)

from

.....
(Name of Dealer)

on

.....
(Date Here)

Print your name and address plainly:

NOTE—KODAKERY will be sent for one year only on this offer. After that the subscription price will be sixty cents for one year or one dollar for two years, but you are under no obligation to renew.—E. K. Co.

Form No. 363-6.3-26.

TEAR OFF HERE

Picture taking with the
Nos. 1 and 1A
Pocket Kodaks

Kodak Anastigmat
Lens *f.6.3*

Published by
EASTMAN KODAK COMPANY
ROCHESTER, N. Y.

Order Film by Number

All Kodak Films are distinguished by the numbers on the ends of the cartons. The number is also on the cartridge and on the back of the camera.

A 126 is the number of the film for the No. 1 Pocket Kodak.

A 116 is the number of the film for the No. 1A Pocket Kodak.

Autographic Film can be used in the earlier models of Kodaks, and "N.C." film can be used in Autographic Kodaks.

Autographic results can only be obtained by using Autographic Film in an Autographic Kodak.

IMPORTANT

When autographing film, bear down with the stylus as heavily as the paper will stand without tearing.

Before Loading

The Nos. 1 and 1A Pocket Kodaks are alike except that the No. 1A makes a larger picture. Throughout this book whatever is written applies to either camera except in the matter of film, picture sizes, diaphragm scales and some accessories.

Before taking any pictures with your Kodak, read the following instructions carefully. Make yourself familiar with the camera, taking especial care to learn how to operate the shutter (see page 11). Work it for instantaneous, time and "bulb" exposures several times before loading the Kodak with film.

The first thing to remember is that the light, which impresses the image upon the sensitive film in a fraction of a second when it comes through the lens, can destroy the film as quickly as it makes the picture. While loading and unloading, be very careful to keep the red paper wound tightly around the film to prevent the light striking it.

CONTENTS

Loading the Kodak	5
Making the Exposures	11
Operating the Shutter	11
Instantaneous Exposures	15
Focusing	17
Diaphragms	24
Using the Finder	27
Autographic Feature	32
Time Exposures—Interiors	37
To Make a Portrait	42
Time Exposures—Outdoors	46
Flash-light Exposures	47
Closing the Kodak	54
Removing the Film	56
Finishing the Pictures	62

Loading the Kodak

THE Nos. 1 and 1A Pocket Kodaks can be loaded or unloaded in daylight. This should be done in a subdued light, not in direct sunlight. Use film No. A 120 for the No. 1 Pocket Kodak, and film No. A 116 for the No. 1A Pocket Kodak.



Fig. 1

1. Slide back the lock, Fig. 1. Take the front of the camera by its edges and lift the end on which the lock is fastened, then draw out and remove that part of the camera entirely, as in Fig. 2.



Fig. 2

In the winding end of the camera is an empty spool, this is the reel. The roll of film is to be placed in the opposite end.

2. Draw out the winding key as far as it will come, and remove the empty spool, Fig. 3.

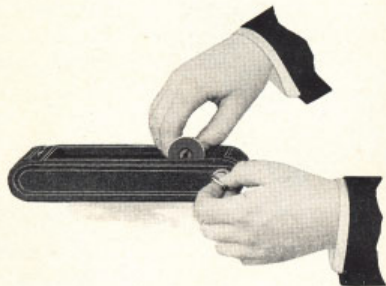


Fig. 3

3. Remove the band that holds the end of the red paper, unfold the end and thread the paper as far as it will go, into the longer opening of the slit in the empty spool. Each spool has one end slotted, and the red paper must be inserted in the empty spool with the spools in position so that the

slotted ends are on opposite edges of the red paper. Give the empty spool three or four turns, enough to bind the paper on the reel. Be careful that the paper draws straight, and that it does not loosen up on the full spool. See Fig. 4.

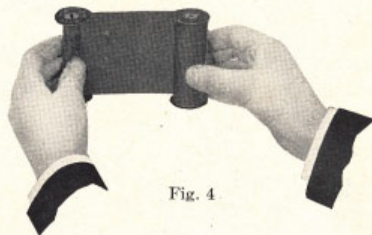


Fig. 4

4. Unroll about four inches of the red paper and place the two spools into the film pockets at each end of the camera. Fig. 5, page 8.

Important: The empty spool or reel must be placed in the winding key end of the camera with its *slotted end towards the winding key*. The word "TOP" printed on the red paper must be next to the winding key.

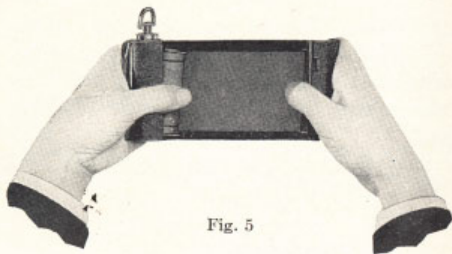


Fig. 5

Push the full spool into the other pocket as far as it will go, so that the tension spring grips it.

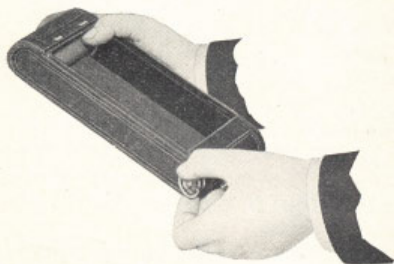


Fig. 6

5. Press in and turn the winding key until it fits into the slot in the empty spool or reel, Fig. 6.

Caution: If too much of the red paper is reeled off before the Kodak is closed, some of the film will be uncovered, fogged and ruined.

6. After the Kodak is loaded, replace the front, first inserting the end opposite the lock; the edge of the box must fit into the groove on this end of the front. Drop the end on which the lock is fastened into place and push over the lock, making sure that it is fastened securely.

From the time the band on the roll of film is broken until the camera is closed, keep the red paper wound tightly on the roll. If it should loosen, light will be admitted and the film ruined.



7. Turn the key and watch the red window. After ten or twelve turns, a warning hand will appear, then turn slowly



until the figure 1 is in the center of the window, as shown in the illustration on page 9.

Press in the winding key while turning it, to keep the key in the slot in the end of the spool.

The film is now in position for the first exposure.

Making the Exposure

BEFORE an exposure is made, four things must be done:

First—The shutter must be adjusted for an instantaneous, time or "bulb" exposure.

Second—The diaphragm lever placed at the proper stop opening.

Third—The Kodak focused.

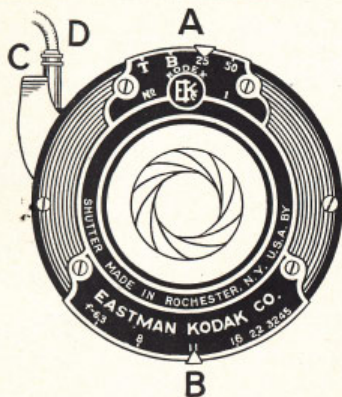
Fourth—An unexposed section of film turned into position.

Exposures are made by pressing the push-pin of the cable release D or pressing the exposure lever C. See diagram of shutter on page 12.

Do not make too sharp a bend in the cable release, or it may kink.

Operating the Shutter

Familiarity with the shutter is necessary for successful picture-taking with any camera. The following directions should be carefully read and the shutter operated several times before loading the Kodak with film.



Instantaneous Exposures "Snapshots"

First—Move the lever A to 25 or 50 (representing the speeds of the shutter), according to the time of instantaneous exposure desired. This adjusts the shutter for Instantaneous Exposures.

Second—Move the lever B to $f.11$. Lever B controls the iris diaphragm and $f.11$ is the proper opening for ordinary outdoor work, such as street scenes, nearby views, etc., when the subject is in bright sunlight, using

speed 25. See instructions for using the diaphragm or stop openings on pages 24 and 25.

Third—Press the push-pin of the cable release D or press the exposure lever C. *This makes the exposure.* Be sure to hold the camera steady, as a slight jar will cause a blurred negative.

Time Exposures

First—Move the lever A to the point "T" (time). This adjusts the shutter for Time Exposures.

Second—Move the lever B to $f.6.3$, 8, 11, 16, 22 or 32 (or $f.45$ with the No. 1A Pocket Kodak), depending on the time of the exposure and the nature of the subject. See instructions for using the diaphragm or stop openings given on pages 24 and 25, also the table for making Interior Time Exposures on pages 40, 41 and 42 and the table for Time Exposures Outdoors, page 46.

Third—Press the push-pin of the cable release D or press the exposure lever C. *This opens the shutter.* Time the exposure by a watch. Again press the push-pin or the exposure lever. *This closes the shutter.*

For time exposures of ten seconds or less, "Bulb" Exposures are recommended.

"Bulb" Exposures

First—Move the lever A to the point "B" (bulb). This adjusts the shutter for "Bulb" Exposures.

Second—Move the lever B to *f.6.3*, 8, 11, 16, 22 or 32 (or *f.45* with the No. 1A Pocket Kodak). See instructions for using the diaphragm or stop openings given on pages 24 and 25, also the table for making Interior Time Exposures on pages 40, 41 and 42 and the table for Time Exposures Outdoors, page 46.

Third—Press the push-pin of the cable release D or press the exposure lever C, to open the shutter, and release it to close the shutter. *This makes the exposure.* The shutter will remain open as long as the push-pin or the exposure lever is under pressure.

Time and "Bulb" Exposures must never be made with the Kodak held in the hands.

As a general rule, make exposures with the cable release instead of with the exposure lever C, as the cable release is less likely to jar the camera.

Important—*Do not oil any part of the shutter.*

In case of accident, return the Kodak to your dealer or to us for repairs.

Instantaneous Exposures "Snapshots"

When making ordinary instantaneous exposures or snapshots, the subject should be in the broad, open sunlight, but the camera must not. The sun should be behind your back or over your shoulder. If it shines directly into the lens it will blur and fog the picture.

Special instructions for making portraits indoors are given on pages 42 and 51.

Use Stop *f.11* and Speed 25

for all ordinary outdoor work, such as nearby landscapes showing little or no sky, groups and street scenes, when

the subject is in the bright sunlight. If a smaller stop opening is used for ordinary snapshots, the light will be so much reduced that it will not make a satisfactory picture.

When making portraits outdoors, with the sun shining brightly, the subject should be in the shadow of a building or a large tree, but with clear and unobstructed sky overhead—use stop *f.6.3* and speed 25. By following this rule unpleasant and distorting shadows on the face will be avoided.

For views at the seashore and on the water, when the sunlight on the subject is *unusually strong* and there are no heavy shadows, stop *f.16* and speed 50 should be used.

For ordinary *landscapes*, in bright sunlight with clear sky overhead, use stop *f.16* and speed 25.

If a smaller stop opening than *f.16* is used for snapshots, *failure will result*, except that *f.22* and speed 25 should be used for extremely distant views, marines, snow scenes and clouds only, in bright sunlight.

To Focus the Kodak

Press the spring lock with the thumb, to open the front of the Kodak, Fig. 1, then push down the bed of the camera.



Fig. 1. Opening the Front.

On the bed of the camera is a focusing scale marked 6, 8, 10, 15, 25 and 100 feet. This is for focusing the camera.

Draw out the lens standard by the knob on the slide plate, *as far as it will come*, where it will lock automatically, Fig. 2, page 18. The Kodak is now in focus for anything 100 feet or beyond.

To adjust the focus for subjects at distances nearer than 100 feet, turn the knurled screw by pushing it with the thumb until the indicator over the focusing scale is exactly at the line marked with the figure corresponding to the distance in feet, between the camera and the *principal object* to be photographed.



Fig. 2

Drawing Out the Lens Standard.

The distances from the Kodak can be estimated without measuring, when

the subject is *beyond fifteen feet*; for instance, if the focus is set at 25 feet (the usual distance for ordinary street work) the sharpest part of the picture will be the objects at that distance from the camera, but everything about 17 to about 50 feet will be in good focus.

For general street work the focus may be kept at 25 feet, but where the *principal object* is nearer or farther away, the focus should be changed accordingly.

For distant views set the focus at 100 feet. Everything beyond 100 feet is in the 100-foot focus. Nothing nearer than six feet can be focused without using a Kodak Portrait Attachment, see pages 44 and 45, or a small stop opening, see the tables on page 21.

What Depth of Focus Means

Suppose that the lens is used at its full opening, $f.6.3$, and the focus is at six feet; an object six feet distant will be sharp, but objects five and one-quarter feet and seven feet distant will not be sharp. Stop the lens down to $f.16$,

and objects each side of the exact point of focus will increase in sharpness and the area within which all objects will be sharp is increased. Go farther and use stop $f.32$, and everything from about four feet to about fourteen feet from the No. 1 Pocket Kodak; and from about four and one-half feet to about ten feet from the No. 1A Pocket Kodak, will be sharp.

It will thus be seen that the smaller the stop opening the greater the depth of focus, that is, the greater the power of the lens to define sharply, at the same time, objects nearer the camera and farther from the camera than the principal object in the picture, which, of course, is the object focused upon. It is obvious that with the small stops the exposure must be correspondingly increased.

The tables on page 21 give the depth of focus or range of sharp definition with the Nos. 1 and 1A Pocket Kodaks, when focused with different stop openings.

The Depth of Focus for Different Stops or Diaphragms

By "depth of focus" is meant the distance, in front of and behind the subject focused on, within which details in the picture will be sharp and distinct.

Table for use with the No. 1 Pocket Kodak

Distance Focused Upon	$f.6.3$		$f.8$		$f.11$		$f.16$		$f.22$		$f.32$	
	Ft.	ft. to inf.	Ft.	ft. to inf.	Ft.	ft. to inf.	Ft.	ft. to inf.	Ft.	ft. to inf.	Ft.	ft. to inf.
100 ft.	31	to inf.	29	to inf.	22	to inf.	17	to inf.	13	to inf.	9	to inf.
25 "	16	to 56	15½	to 66	14	to 31	11½	to inf.	9½	to inf.	7½	to inf.
15 "	11½	to 22	11	to 24	10	to 31	8½	to 59	7½	to inf.	6½	to inf.
10 "	8	to 12	8	to 13	7½	to 15	7	to 19	6	to 32	5½	to inf.
8 "	7	to 9	6½	to 10	6½	to 11	6	to 13	5½	to 18	4½	to 36
6 "	5½	to 6½	5½	to 7	5	to 7½	4½	to 8½	4½	to 10	4	to 14

Table for use with the No. 1A Pocket Kodak

Distance Focused Upon	$f.6.3$		$f.8$		$f.11$		$f.16$		$f.22$		$f.32$		$f.45$	
	Ft.	ft. to inf.	Ft.	ft. to inf.	Ft.	ft. to inf.	Ft.	ft. to inf.	Ft.	ft. to inf.	Ft.	ft. to inf.	Ft.	ft. to inf.
100 ft.	40	to inf.	35	to inf.	28	to inf.	21	to inf.	17	to inf.	12	to inf.	9	to inf.
25 "	18	to 40	17½	to 46	15½	to 68	13½	to inf.	11	to inf.	9	to inf.	7½	to inf.
15 "	12	to 19	11½	to 20	10½	to 24	9½	to 32	8½	to 61	7½	to inf.	6½	to inf.
10 "	8½	to 11½	8½	to 12	8	to 13	7½	to 15	7	to 20	6	to 32	5	to inf.
8 "	7½	to 9	7½	to 9½	7	to 9½	6½	to 10½	6	to 13	5½	to 17	4½	to 34
6 "	5½	to 6½	5½	to 6½	5½	to 7	5	to 7½	4½	to 8½	4½	to 10	4	to 14

"Inf." is the abbreviation for Infinity—meaning an unlimited distance from the lens.

The "f." System

A lens is said to work at a certain "speed;" this means that the lens will give a sharp image from corner to corner of the film, with an opening a certain proportion of its focal length. It should be borne clearly in mind that this "speed" depends *not* upon the size of the opening, but upon the size of the opening *in proportion to the focal length of the lens* (distance from the lens to the film when the camera is focused on infinity). The lens that will give sharp images with the largest opening is said to possess the greatest "speed."

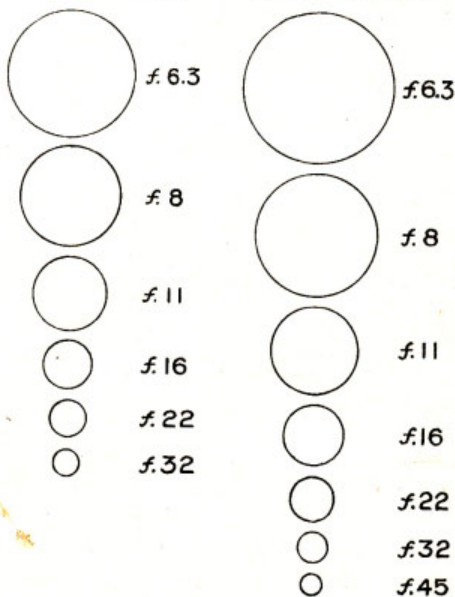
The proportional size or "value" of the stop opening is designated by the "f." number and is the quotient obtained by dividing the focal length of the lens by the diameter of the stop opening.

Taking, for instance, a lens of 8-inch focus with a stop opening one inch in diameter, we find that $8 \div 1 = 8$; hence, 8 is the *f.* value of the stop and would be designated *f.8*. Suppose the stop is $\frac{1}{4}$ inch in diameter, we would then

have $8 \div \frac{1}{4} = 32$ or $1/32$ of the focal length of the lens, the *f.* value of the stop opening, and known as *f.32*.

No. 1 Pocket Kodak

No. 1A Pocket Kodak



COPYRIGHT 1922, BY EASTMAN KODAK CO.

Diaphragms

The diaphragms, or stops as they are sometimes called, are the openings that regulate the amount of light passing through the lens. The openings are enlarged or reduced by moving the lever B, see page 12. The circles on page 23 show the actual sizes of the diaphragm or stop openings of the shutters used on the Nos. 1 and 1A Pocket Kodaks, when they are fitted with the Kodak Anastigmat Lens f.6.3. They show the relative sizes of the stop openings and how their areas differ.

f.6.3—For rapidly moving objects in bright sunlight, use speed 50; also for portraits out-of-doors, when the sun is shining, see page 16, and for portraits indoors, see page 43.

f.8—For instantaneous exposures on *slightly* cloudy or hazy days, use speed 25. For scenes on narrow and slightly shaded streets, use speed 25.

f.11—For all ordinary outdoor work, such as nearby landscapes showing little or no sky, groups and street scenes, when the subject is in bright sunlight, use speed 25.

f.16—For open views, when the sunlight on the subject is *unusually strong* and there are no heavy shadows, such as views at the seashore and on the water, use speed 50; for ordinary *landscapes*, in bright sunlight, with clear sky overhead, use speed 25; also for Interior Time Exposures, the time for which is given in the table on pages 41 and 42.

f.22—For instantaneous exposures of extremely distant landscapes, marines, snow scenes and clouds only, in bright sunlight, use speed 25; also for Time Exposures.

f.32 (and f.45 on No. 1A Pocket Kodak)—For Time Exposures Outdoors on cloudy days, the exposures for which are given in the table on page 46. For Interior Time Exposures, see pages 40, 41 and 42. *Never for instantaneous exposures.*

The smaller the stop the greater the depth of focus, see pages 19, 20 and 21.

Failure will result, if stops f.32 or f.45 are used for *instantaneous exposures*.

Throughout this manual all exposures given for out-of-door subjects

are for the hours between two and a half hours after sunrise and two and a half hours before sunset. If earlier or later the exposures must be longer. For subjects in the shadow, under porches or under trees, no definite directions can be given; experience only can teach the proper exposure.

How to Use the No. 1 or the No. 1A Pocket Kodak as a Fixed Focus Camera

SET THE FOCUS AT 25 FEET.

USE SPEED 25.

SET DIAPHRAGM AT *f*.11.

By following the above directions your Kodak can be used as a fixed focus camera, with the additional advantage of being instantly convertible to a focusing camera when conditions call for it. It must be remembered, however, that when using the Kodak as a fixed focus type, the subject must be in bright sunlight, to obtain a fully exposed negative.

The range of sharpness when your Kodak is adjusted as a fixed focus camera will be found in the table on page 21.

EXPLANATION: A lens is often spoken of as having a fixed focus. There is no such thing as a fixed focus lens, but in certain cameras, $3\frac{1}{4} \times 4\frac{1}{4}$ and smaller (equipped with short focus lenses), the lens can be set at a distance that is a compromise, as to its focus, between far and near points. A camera with a lens so focused, used in combination with a relatively small stop, is called a fixed focus camera.

Using the Finder

The finder gives the scope of view and shows the picture as it will appear, but on a much reduced scale.

Point the lens at the subject to be photographed and looking into the finder from directly over the center of it, include what you want and compose the picture by turning to the right or left, see illustration on page 30.

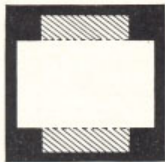
It will be noticed that the top of the finder is notched, as shown in Fig. 3. This enables the one finder to serve when the Kodak is held in either vertical or horizontal position.

Only what is seen in that part of the finder represented by the white area of

the diagrams will be included in the picture.



View Included when Making a Vertical Picture.



View Included when Making a Horizontal Picture.

Fig. 3

Hold the Kodak steady—hold it level as shown in illustrations, and press the push-pin of the cable release. *This makes the exposure.*



Fig. 4

Holding Kodak in Vertical Position.

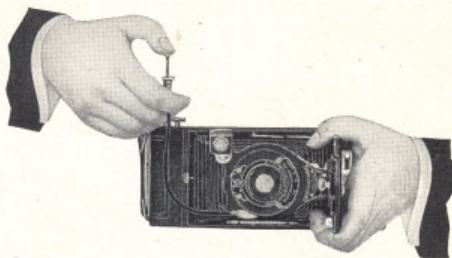


Fig. 5

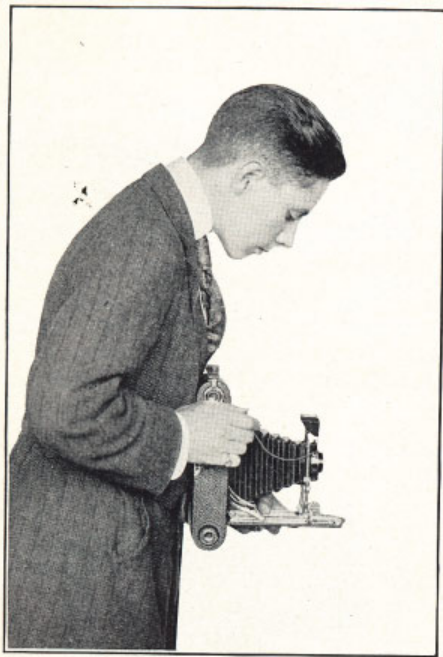
Holding Kodak in Horizontal Position, Showing Finder Properly Turned.

Using the Exposure Lever



Fig. 6

Fig. 6 shows how to make a vertical picture without using the cable release. Hold the bed of the Kodak firmly with



When making instantaneous exposures or snapshots with any camera, hold it firmly against the body as shown. When pressing the push-pin or the exposure lever, hold the breath for the instant.

the left hand, steady it with the right and press the exposure lever with the thumb of the right hand.

Hold the Kodak Level

The Kodak must be held level. If all of the subject cannot be included



Fig. 7

Effect Produced by Tilting the Kodak.

in the finder without tilting the lens upwards, move backwards until it is all included *with the camera held level.*

Tilting the Kodak to bring in the top of a tall building produces the distorted effect shown in Fig. 7, page 31. Sometimes a tall building can be photographed from a building opposite, at a level with its center.

If the subject is below the normal height, like a small child or a dog, the Kodak should be held down level with the center of the subject.

Autographic Feature

The autographic feature makes it possible to record on Autographic Film, at the time of exposure, any data, such as the name of place or subject, the date or any other memo. This is done through a small opening in the back of the Kodak and the record normally comes just outside the picture area of the negative.

The Autographic Record as a Guide

Many amateurs have improved the quality of their work by making notes, at the time of the exposure, of the prevailing conditions, as: Bright light, speed 25, stop $f.11$, which is easily abbreviated to: B, 25, 11. By keeping such

records the causes of failure, if any, are quickly found. A comparison of negatives and records will soon show how the failures occurred and future mistakes can be avoided. It is obvious that the best way to make these records is autographically — *on the film, at the time.*

4 lb. Brook Trout, E.G.C. 6/23/16

Band Concert, Maplewood Pk. 7/3/16

George Edward learns to walk, 7/10/16

Empire State Express, f.6.3 1/200 sec

Moving Day, 111 Fulton Ave. 2/17/16

Flood, Erie, Pa. 8/3/15 - 6.30 P.M.

Autographic Records.

The Autographic Records above, suggest a few of the thousand and one ways in which these may be used to add value to your negatives.

The Method

After the exposure has been made, remove the stylus from the side of the

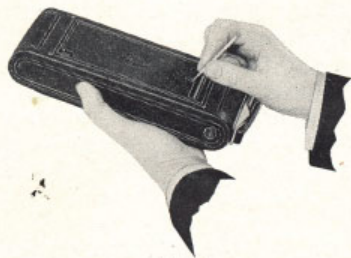


Fig. 8
Pushing back the Sliding-door.

shutter. Push back the sliding-door on the back of the Kodak with the point of the stylus in the hole in the center of the door, Fig. 8. Hold the stylus as



Fig. 9
Position of Stylus when making an Autographic Record.

upright as possible, Fig. 9, and write on the strip of red paper any memoran-

dum desired, such as the date, title of the picture or details of exposure — light, speed and stop opening.

To get a clear impression, press firmly on both the up and down strokes. While writing or afterwards, shield the paper from the sun.

When the writing is completed, expose it to the light as follows:

Expose to the Sky, but not to the Sun:

	OUT-OF-DOORS	INDOORS
	CLOSE TO WINDOW	
BRILLIANT LIGHT	2 to 5 Secs.	5 to 7 Secs.
DULL LIGHT	5 to 10 Secs.	10 to 15 Secs.

Expose to Artificial Light:

ELECTRIC LIGHT, distance two inches, 30 to 60 seconds.

WELSBACH GAS LIGHT, distance six inches, 30 to 60 seconds.

Close the sliding-door with the stylus before winding the next section of film into place.

Caution: So that the writing will come exactly between the negatives, the film must be turned carefully until the next number is *centered* in the red window.

Turn a new section of film into position: Press in slightly on the winding key and turn it slowly, three or four times, until the next number appears in the red window. See Fig. 10. Do this after each exposure. The warning hand appears only before No. 1 of each roll of film.



Fig. 10
Winding the Film.

Important: When you have exposed the last section of film and made the autographic record of it, turn the winding key until the letter A appears in the center of the window. Open the sliding-door and write your name on the red paper, expose it to the light as when making the exposure records, then close the door and finish winding

the film and red paper for removal from the Kodak.

The film is now ready to send to your finisher, and when developed will be easily identified by the autographic copy of your name which you wrote on the red paper.

Time Exposures—Interiors

Place the Kodak on a table, chair, tripod or other firm support. If a table or chair is used, the camera must not be more than two or three inches from the edge, to avoid including part of the table or chair in the picture.

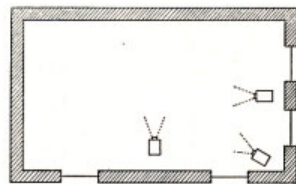


Diagram showing positions for Kodak.

The Kodak should be placed in such a position that the finder will include the view desired. The diagram above shows three positions for the Kodak. It should not be pointed

directly at a window, as the glare of light will blur the picture. If all the windows cannot be avoided, draw the shades of those within range of the lens.

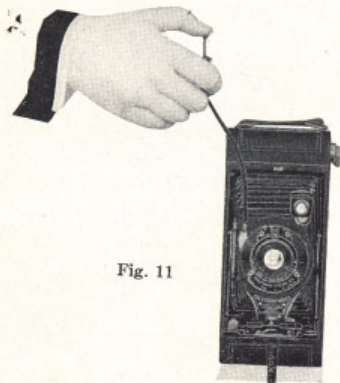


Fig. 11

For a vertical picture raise the name-plate on the bed and place the Kodak on a table or chair as in Fig. 11. There are tripod sockets for use with a tripod.

To make a horizontal picture without a tripod, turn the support on the bed of the Kodak behind the focusing

screw, and place the camera in the position as shown in Fig. 12.

Focus the Kodak as described on pages 17, 18 and 19.

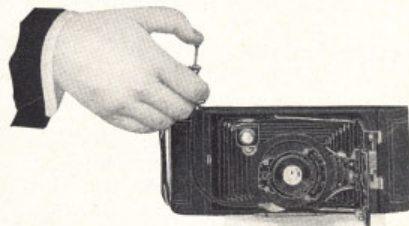


Fig. 12

Adjust the shutter for a Time Exposure by placing the lever A at the top of the shutter exactly at the letter "T," see pages 12 and 13.

All being ready, press the push-pin of the cable release, or press the exposure lever carefully, once to open, time the exposure by a watch, and again press the push-pin or the exposure lever to close the shutter.

Turn the Winding Key: After making the autographic record, press

in the winding key and turn it until the next number appears in the center of the red window.

THE KODAK IS NOW READY FOR THE NEXT INTERIOR EXPOSURE.

Follow these directions for each successive exposure.

When the last Interior Exposure has been made, adjust the shutter for Instantaneous Exposures, see page 12.

Exposure Table for Interiors

The following table gives the approximate exposures required under varying conditions of light, when using stop *f.16*. If stop *f.11* is used, give one-half the time; with stop *f.8* give one-fourth the time; and with stop *f.6.3* give one-sixth the time. If stop *f.22* is used, give twice the time; with stop *f.32* give four times; and if stop *f.45* is used, give eight times the exposures given in the table.

The smaller the stop opening the greater the depth of focus, see pages 19, 20 and 21. Stop *f.16* gives the best average results for Interiors:

WHITE WALLS AND MORE THAN ONE WINDOW:

bright sun outside, 4 seconds;
hazy sun, 10 seconds;
cloudy bright, 20 seconds;
cloudy dull, 40 seconds.

WHITE WALLS AND ONLY ONE WINDOW:

bright sun outside, 6 seconds;
hazy sun, 15 seconds;
cloudy bright, 30 seconds;
cloudy dull, 60 seconds.

MEDIUM COLORED WALLS AND HANGINGS AND MORE THAN ONE WINDOW:

bright sun outside, 8 seconds;
hazy sun, 20 seconds;
cloudy bright, 40 seconds;
cloudy dull, 80 seconds.

MEDIUM COLORED WALLS AND HANGINGS AND ONLY ONE WINDOW:

bright sun outside, 12 seconds;
hazy sun, 30 seconds;
cloudy bright, 60 seconds;
cloudy dull, 120 seconds.

DARK COLORED WALLS AND HANGINGS AND MORE THAN ONE WINDOW:

bright sun outside, 20 seconds;
hazy sun, 40 seconds;
cloudy bright, 80 seconds;
cloudy dull, 2 minutes, 40 seconds.

DARK COLORED WALLS AND HANGINGS**AND ONLY ONE WINDOW:**

bright sun outside, 40 seconds;

hazy sun, 80 seconds;

cloudy bright, 2 minutes, 40 seconds;

cloudy dull, 5 minutes, 20 seconds.

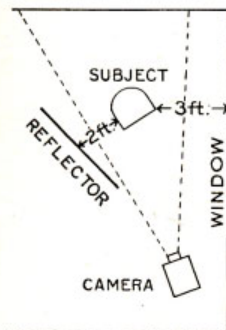
The exposures given above are for rooms where windows get the direct light from the sky, and for the hours from three hours after sunrise until three hours before sunset. If earlier or later the exposures must be longer.

To Make a Portrait

The subject should be seated in a chair partly facing the light with the body turned slightly away from, and the face turned towards the Kodak which should be a little higher than an ordinary table. The subject should look at an object level with the lens or directly at the lens. Compose the picture in the finder. For a three-quarter figure the Kodak should be about eight feet from the subject, and for a full-length figure about ten feet. The background should form a contrast with the subject; a light background usually gives a better effect than a dark one.

When making portraits, more pleasing results are obtained if the background and the surrounding objects are not quite so sharp and clear as the face. This effect is obtained by using the largest stop opening, $f.6.3$. The distance between the subject and the lens must be carefully measured. See Depth of Focus Tables, page 21.

To get a good light on the face, follow the arrangement shown in the diagram.



A reflector helps to get detail in the shaded part of the face. A white towel or sheet thrown over a screen or other high piece of furniture will make a suitable reflector; place it at an angle and in the position indicated in the diagram.

"How to Make Good Pictures," a book containing many diagrams and illustrations showing various lighting effects, can be obtained from your dealer.

Instructions for making portraits out-of-doors are given on page 16.

Kodak Portrait Attachment

The Kodak Portrait Attachment is an extra lens, which, when slipped over the regular lens makes large head and shoulder portraits.

Place the Attachment over the lens and compose the picture in the finder. Turn the Kodak just a *little* to the left, as the short distances at which the subject must be from the lens, make it necessary to center the subject by eye instead of by the finder.

DISTANCE BETWEEN SUBJECT AND LENS MUST BE	THE FOCUSING INDICATOR MUST BE SET AT
2 feet 6 inches.....	6 feet
2 " 9 "	8 "
3 "	10 "
3 " 4 "	15 "
3 " 8 "	25 "
4 " 2 "	100 "

The subject must be at one of the distances from the Kodak, given in the table above. Measure the distance carefully from the lens to the face, and place the focusing indicator on the scale according to the table.

When making portraits, the most pleasing results are obtained with the subject four feet two inches from the lens and the focusing indicator set at 100 feet. The Attachment can also be used for making pictures of flowers and similar subjects, the shorter distances will then be found more satisfactory.

The exposure when using the Attachment is the same as without it.

Use *Kodak Portrait Attachment No. 6* with the Nos. 1 and 1A Pocket Kodaks, when fitted with the Kodak Anastigmat Lens *f.6.3*.

Kodak Diffusion Portrait Attachment

The Kodak Diffusion Portrait Attachment is a supplementary lens used in the same manner as the regular Kodak Portrait Attachment. It produces a true, soft-focus effect free from objectionable "fuzziness" or out-of-focus appearance. By using this Attachment, portraits are made more artistic, due to the softening effect of diffusion.

Use *Kodak Diffusion Portrait Attachment No. 6* with the Nos. 1 and 1A

Pocket Kodaks, when fitted with the Kodak Anastigmat Lens f.6.3.

Time Exposures—Outdoors

When the smaller stop openings (f.32 or f.45) are used, the light passing through the lens is so much reduced that time exposures out-of-doors may be made the same as for interiors, but the exposures must be much shorter.

For very short time exposures as described below, use the "Bulb" Exposure, see page 14.

With Sunshine—The shutter can hardly be opened and closed quickly enough to avoid over-exposure.

With Light Clouds—From one to three seconds will be sufficient.

With Heavy Clouds—Four seconds to eight seconds will be required.

These exposures are for hours from two and a half hours after sunrise until two and a half hours before sunset, and for subjects in the open. For other hours or for subjects in the shadow, under porches or under trees, the lighting conditions vary so greatly that no definite instructions can be

given; experience only can teach the proper exposure to give.

Never make Time or "Bulb" Exposures with the Kodak held in the hands. Always place it upon some firm support, such as a tripod, table or chair.

Flash-light Exposures

Eastman Flash Sheets make picture-taking at night easy. A package of flash sheets, a piece of cardboard, a pin, a split stick about two feet long and a match complete the list of necessary extras, although a Kodak Flash Sheet Holder is a great convenience.

With flash sheets there is little smoke. They are safer than any other self-burning flash medium, besides giving a softer light that is less trying to the eyes.

Flash sheets make possible the photographing of many interiors that could not be taken otherwise, either for lack of illumination or because there are windows in a direct line of view which must have the shades drawn to prevent the blurring of the picture.

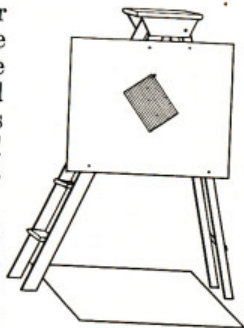
Evening parties, groups around a dinner or card table or single portraits may be readily made by using flash sheets, providing souvenirs of many occasions, which, but for the flash-light, would be impossible.

Preparation for the Flash

Adjust the shutter for a Time Exposure, as described on page 13 (stop *f.11* must be used). Place the Kodak on some firm, level support where it will include the view desired, see pages 37 and 38.

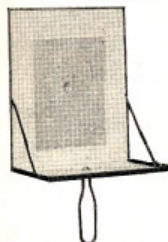
Pin a flash sheet by one corner to a piece of cardboard. This cardboard should be tacked to a step-ladder or similar object. See diagram. White cardboard should be used; this acts as a reflector and increases the light on the subject.

The flash sheet should be placed two feet behind and two or three



feet to one side of the camera. If it is in front of, or on a line with the Kodak, the light from the flash would strike the lens and blur the picture. It should be placed at one side as well as behind, so as to throw a shadow and give a little relief in the lighting. The flash should be a little higher than the camera. An extra piece of cardboard, a foot square or larger, placed under the flash sheet will prevent any sparks doing damage. By using the Kodak Flash Sheet Holder this is taken care of, and we strongly advise its use

Kodak Flash Sheet Holder



The holder offers a most effective method of burning flash sheets. It can be held in the hand, or by unscrewing the handle it can be used on a tripod. It must be held at arm's length and with the flash sheet facing the subject.

Place the flash sheet on the holder, making it secure by pressing the center

of the flash sheet through the hole and against the notched edge of the hole in the back of the holder.

Never use more than *one sheet at a time* in the Kodak Flash Sheet Holder.

The Flash Sheet

The size of the sheet required, depends upon the distance of the object farthest from the camera, and the color of the walls and hangings:

With the subject ten feet away, with light walls and hangings, use one No. 1 sheet; with dark walls and hangings, use one No. 2 sheet.

With the subject fifteen feet away, with light walls and hangings, use one No. 2 sheet; with dark walls and hangings, use one No. 3 sheet.

Taking the Picture

With the Kodak and flash sheet in position and all being ready, open the camera shutter, and with the holder at arm's length apply a lighted match from behind, through the round opening in the holder.

If the Kodak Flash Sheet Holder is not used, the match must be held in a split stick *at least two feet long*.

There will be a bright flash which makes the picture. Close the shutter, make the autographic record, following the table given on page 35, and wind a new section of film into place, ready for the next picture.

To Make a Portrait—The subject should be seated in a chair partly facing the Kodak, which should be a little higher than an ordinary table. The face should be turned towards the camera, and the subject should look at an object level with the lens or directly at the lens.

Find the distance the subject should be from the camera by looking in the finder. For a three-quarter figure this will be about eight feet; for a full-length figure about ten feet.

The flash should be at the side of the camera away from the face, that is, the subject should not face it, and it should be slightly higher than the subject's head.

Picture taking with the



Making a Portrait by Flash-light.

For large head and shoulder portraits, use the Kodak Portrait Attachment, see pages 44 and 45.

To Photograph a Group—Half the group should be seated and the other half standing behind them. Arrange the chairs at an equal distance from the camera. Any number of chairs may be used, but none of the subjects should be seated on the floor because the perspective would be too violent, and the result would not be pleasing.

Backgrounds—When making single portraits or groups, care should be taken to have a suitable background against which the figures will show in relief; a light background is better than a dark one, and often a single figure or two will stand out well against a curtain. For larger groups a medium light wall will be suitable.

Compose the group for the best effect, then look in the finder to see that all are in the picture. To make the image visible in the finder, the room must be well lighted. Any lights that do not show in the finder may be left on during the exposure.

Eastman Flash Sheets burn more slowly than flash powders, producing a much softer light and are better for portraits. The subject should be warned not to move, as the picture is not made *instantaneously*; the flash lasts about one second.

Eastman Flash Cartridges

Eastman Flash Cartridges may be substituted for the sheets if desired. We recommend the sheets as more

convenient, cheaper and capable of producing the best results. The cartridges are recommended only for *instantaneous* work.

Closing the Kodak

To close the Kodak, first see that the focus indicator is at the 100-foot mark on the scale, then release the

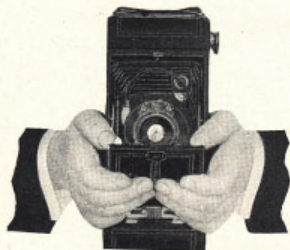


Fig. 14

Closing the Bed of Kodak.

spring catch on the lower part of the lens standard, from the slot on the bed of the Kodak, and slide back the lens standard as far as it will go.

Place the cable release around the shutter, press the arm locks at each side of the standard and raise the bed as shown in the illustration, Fig. 14.

Caution: Before closing the bed of the camera, make sure that the finder is in the position for making a vertical picture or in the upright position. The lens standard must be pushed back *as far as it will go*.

If the finder and lens standard are not in proper position they will interfere with the bed when closing.

Do not make too sharp a bend in the cable release, when closing the Kodak, or it may kink.

Removing the Film

THE Kodak can be loaded or unloaded in daylight. This should be done in a subdued light, not in direct sunlight.

1. When the last section of film has been exposed, make the autographic record of your name, following instructions on page 36, and give the winding key about twelve turns to cover the film with the red paper.

2. Remove the front of the Kodak as described on page 5.

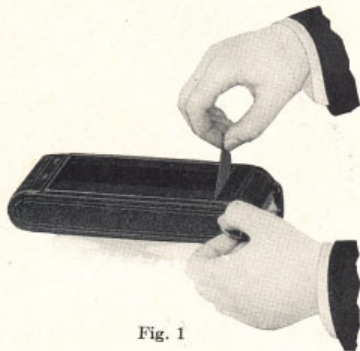


Fig. 1

Holding red paper taut while turning key.

3. Holding the paper taut, Fig. 1, turn the key until all but about an inch of the paper is on the reel.

4. Hold the ends of the red paper and the sticker together to prevent the paper from loosening. If the sticker folds under the reel, turn the winding key to bring it up.

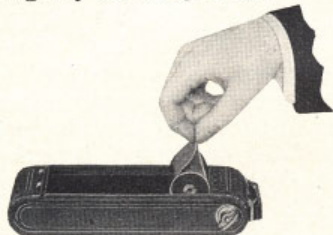


Fig. 2

Removing the roll of exposed film.

5. Draw out the winding key to release the spool, and remove the roll of film, as in Fig. 2.

6. Fold under about half-an-inch of the red paper, and fasten it with the sticker. Folding under the end of the paper makes the breaking of the seal easy, when ready to develop the film.

7. Wrap up the exposed film immediately to prevent the possibility of light being admitted. It is now ready for developing and printing.

8. Remove the empty spool and place it in the winding end of the camera.

9. Replace the front of the Kodak as described on page 9.

Important: Film should be developed as soon as possible after exposure. The quality of the image on all sensitized products is retained by prompt development after exposure.

It is a good plan to reload the Kodak as soon as an exposed film has been removed, to be ready for the next pictures. Use film No. A 120 for the No. 1 Pocket Kodak, and film No. A 116 for the No. 1A Pocket Kodak. Load the Kodak as described on pages 5 to 10 inclusive.

Load your Kodak with Kodak Film.

Look for this Trade Mark on the box:

EASTMAN
Autographic

***"If it isn't Eastman,
it isn't Kodak Film."***

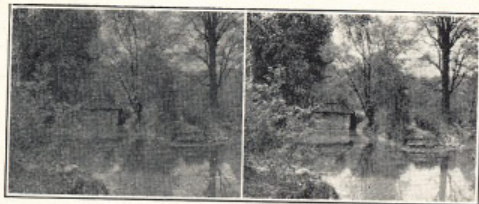
"Cinch" Marks

If the film and paper loosen up a trifle when taken from the camera, there is an inclination to take the cartridge in the hand and wind it as closely as possible, "cinching" it tightly with a twisting motion. There is nothing more likely to injure the negatives than this tight drawing of the film, as it rubs the surface, making fine parallel scratches running lengthwise of the film, which, in some cases,

will ruin the negatives. *Do not "cinch" the cartridge.* It simply needs to be wound tightly enough to keep the red paper within the flanges of the spool.

Clean Lenses

Dirty or dusty lenses make poor pictures. The pictures below illustrate this clearly. The gray, flat, and indistinct picture was made with a dirty lens, the surfaces of which were covered with dust. The sharp, clear and distinct picture was made with the same lens after it had been carefully cleaned.



Made with Dirty Lens.

Made with Clean Lens.

Lenses should be frequently examined. Remove the front of the Kodak as described and shown in

Figs. 1 and 2 on page 5 (when there is no film in it), then open and draw out the lens standard as in Figs. 1 and 2 on pages 17 and 18. Adjust the shutter for a Time Exposure and open it; the largest stop, $f.6.3$, should be in position. Hold the Kodak with the front towards the light, then look through the lens from the back of the camera, and if it is dirty, wipe the front and back of the lens with a clean handkerchief.

Large spots of dust or dirt on the lens will cause defects in the picture, while if the lens is evenly covered with a film of dust, dirt or moisture, the effect will be to hold back a great deal of light and make the picture gray and flat.

Keep Dust Out of the Camera

It is advisable to wipe out the inside of the camera and bellows occasionally with a slightly damp cloth, especially if the camera has not been used for some time.

Finishing the Pictures

THERE are two distinct steps in the making of photographs—the picture *taking* and the picture *finishing*. To free our instruction books from unnecessary details, which might be confusing, we give with the camera the directions for picture *taking* only.

The instructions in this booklet are ample for the handling of the camera under practically all conditions. Those who wish to do their own developing and printing will find equally full directions accompanying the Kodak Film Tanks (for developing in daylight), or the Outfits for tray or dark-room use.

To develop film, No. A 120, used in the No. 1 Pocket Kodak, obtain a "Brownie" or a 2½-inch Kodak Film Tank. To develop film, No. A 116, used in the No. 1A Pocket Kodak, obtain a 2½-inch Kodak Film Tank.

These two sizes of film may be developed in the larger tanks, but not so economically.

If dark-room development is preferred, an Eastman A.B.C. or an

Eastman 3A Developing and Printing Outfit should be obtained.

In keeping with our plan and purpose to provide the users of our cameras with every help in the production of good pictures, we will be glad to furnish such developing and printing instructions, whether a tank or outfit is purchased or not.

With the Kodak Film Tank and Velox paper, amateurs find as much pleasure in the finishing of the pictures as in the taking of them, and are able to make excellent pictures by the simple methods we have worked out.

We never lose interest in the purchaser of a Kodak. We are not only willing, but are anxious at all times to help solve any problems that may arise, either by sending the necessary printed instructions or by individual correspondence, through our Service Department. Making use of the knowledge of our experts places you under no obligation. Kodak Service is free—and goes with the purchase of every Kodak.

EASTMAN KODAK COMPANY,
ROCHESTER, N. Y.

PRICE LIST

AUTOGRAPHIC FILM CARTRIDGE, No. A 120, $2\frac{1}{4} \times 3\frac{3}{4}$, six exposures...	\$.25
AUTOGRAPHIC FILM CARTRIDGE, No. A 116, $2\frac{1}{2} \times 4\frac{1}{4}$, twelve exposures	.60
Six exposures.....	.30
LEATHER CARRYING CASE, with strap, for the No. 1 Pocket Kodak.....	2.50
LEATHER CARRYING CASE, with strap, for the No. 1A Pocket Kodak....	3.00
KODAK PORTRAIT ATTACHMENT No. 6, for the Nos. 1 and 1A Pocket Kodaks when fitted with the Kodak Anastigmat Lens f.6.3...	.75
KODAK DIFFUSION PORTRAIT ATTACHMENT No. 6, for the Nos. 1 and 1A Pocket Kodaks when fitted with the Kodak Anastigmat Lens f.6.3	1.50
KODAK COLOR FILTER AND KODAK SKY FILTER No. 6, for the Nos. 1 and 1A Pocket Kodaks when fitted with the Kodak Anastigmat Lens f.6.3, each.....	1.15
KODAK METAL TRIPOD, No. 0.....	2.75
No. 1.....	4.50
No. 2.....	5.00
LEATHER CARRYING CASE, for Kodak Metal Tripod, Nos. 0, 1 or 2.....	2.70
"BROWNIE" KODAK FILM TANK.....	4.00
Duplicating Outfit for above Tank.	1.75

DEVELOPER POWDERS for "Brownie" Kodak Film Tank, six powders...	\$.20
KODAK FILM TANK, $2\frac{1}{2}$ -inch.....	5.50
Duplicating Outfit for above Tank..	2.75
DEVELOPER POWDERS, for $2\frac{1}{2}$ -inch Kodak Film Tank, six powders...	.25
EASTMAN A B C DEVELOPING AND PRINTING OUTFIT for dark-room development and printing (4x5 or smaller), complete.....	2.00
EASTMAN 3A DEVELOPING AND PRINTING OUTFIT for dark-room development and printing ($3\frac{1}{4} \times 5\frac{1}{2}$ or smaller), complete.....	2.00
KODAK ACID FIXING POWDER, one-pound.....	.25
Half-pound.....	.15
Quarter-pound.....	.10
EASTMAN HYDROCHINON DEVELOPER POWDERS (do not stain the fingers), six powders.....	.30
EASTMAN PYRO DEVELOPER POWDERS for dark-room development, six powders.....	.25
EASTMAN SPECIAL DEVELOPER POWDERS, box of five tubes.....	.35
EASTMAN HYDROCHINON DEVELOPER POWDERS, box of five tubes.....	.30
EASTMAN PYRO DEVELOPER POWDERS, box of five tubes.....	.25
THERMOMETER STIRRING ROD.....	1.25

Picture taking with the

KODALOID PRINTING MASK, No. 3, for use with $2\frac{1}{4} \times 3\frac{1}{4}$ negatives.....	\$.10
No. 4, for use with $2\frac{1}{2} \times 4\frac{1}{4}$ negatives.....	.10
VELOX PAPER, $2\frac{1}{4} \times 3\frac{1}{4}$, one dozen sheets.....	.12
$2\frac{1}{2} \times 4\frac{1}{4}$, one dozen sheets.....	.15
NEPERA SOLUTION (for developing Velox) four-ounce bottle.....	.28
VELOX RE-DEVELOPER, package of twelve tubes.....	1.08
VELOX TRANSPARENT WATER COLOR STAMPS, booklet of twelve colors..	.50
VELOX WATER COLOR OUTFIT, consisting of Artist's Mixing Palette, three special Camel's Hair Brushes and one book of Velox Transparent Water Color Stamps (twelve colors)	1.00
SOLIO PAPER, $2\frac{1}{4} \times 3\frac{1}{4}$, two dozen sheets.....	.20
$2\frac{1}{2} \times 4\frac{1}{4}$, two dozen sheets.....	.25
COMBINED TONING AND FIXING SOLUTION FOR SOLIO, eight-ounce bottle	.50
Four-ounce bottle.....	.30
EASTMAN REDUCER AND STAIN REMOVER, box of five tubes.....	.50
EASTMAN FLASH SHEETS, No. 1, half-dozen.....	.35
No. 2, half-dozen.....	.56
No. 3, half-dozen.....	.84

Nos. 1 and 1A Pocket Kodaks

KODAK FLASH SHEET HOLDER.....	\$1.25
KODAK DRY MOUNTING TISSUE, $2\frac{1}{4} \times 3\frac{1}{4}$ or $2\frac{1}{2} \times 4\frac{1}{4}$, three dozen sheets	.10
EASTMAN FILM DEVELOPING CLIPS, $3\frac{1}{2}$ -inch, per pair.....	.30
KODAK JUNIOR FILM CLIPS, No. 1, each.....	.15
KODAK DARK-ROOM LAMP, oil, $\frac{5}{8}$ -inch wick.....	1.25
KODAK SAFELIGHT LAMP, an electric dark-room lamp.....	3.50
TRAYS, EASTMAN ENAMEL, size 4 x 5, each.....	.75
EASTMAN VISIBLE GRADUATE, eight-ounce.....	.50
EASTMAN PRINTING FRAME, $2\frac{1}{2} \times 4\frac{1}{4}$.40
KODAK PHOTO BLOTTER ROLL, for drying prints.....	1.50
KODAK NEGATIVE ALBUM, to hold 100 $2\frac{1}{4} \times 3\frac{1}{4}$ or smaller negatives...	1.25
KODAK NEGATIVE ALBUM, to hold 100 $2\frac{1}{2} \times 4\frac{1}{4}$ or smaller negatives...	1.25
KODAK TRIMMING BOARD No. 1, capacity 5 x 5 inches.....	.75
KODAK PRINT ROLLER, double, 6-inch	1.00
FLEXO PRINT ROLLER, single, 4-inch..	.35
BALTIC MOUNTS, for prints $2\frac{1}{4} \times 3\frac{1}{4}$, per 50.....	1.30
For prints $2\frac{1}{2} \times 4\frac{1}{4}$, per 50.....	1.40

RHODES ALBUM, flexible leather cover, loose-leaf, 50 black leaves, size 7 x 11.....	\$2.75
Cloth cover, size 7 x 11.....	1.25
"HOW TO MAKE GOOD PICTURES," an illustrated book including many helpful suggestions.....	.50

Developing, Printing and Enlarging

Developing Film, $2\frac{1}{4} \times 3\frac{1}{4}$, six-exposure cartridge.....	\$.15
Developing Film, $2\frac{1}{2} \times 4\frac{1}{4}$, twelve-exposure cartridge.....	.35
Six-exposure cartridge.....	.20
Velox Prints, $2\frac{1}{4} \times 3\frac{1}{4}$ or $2\frac{1}{2} \times 4\frac{1}{4}$, unmounted, each.....	.07
Velox Prints, mounted, each.....	.09

Prints unmounted unless otherwise specified.

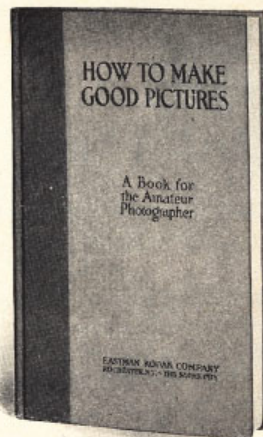
When mailing film for developing, printing or enlarging, mark the package plainly with your name and address, and write a letter of instructions, with remittance.

Bromide Enlargements, mounted on cards:	
8 x 10 or 6 x 10, each.....	\$1.00
10 x 12 or 7 x 12, each.....	1.40
11 x 14 or 8 x 14, each.....	1.75

On enlargement orders, if, in our opinion, an enlargement will be improved by double mounting, we will do so at an additional charge of ten cents.

All prices subject to change without notice.

EASTMAN KODAK COMPANY,
ROCHESTER, N. Y.



A PRACTICAL book for the amateur. It describes in a simple, understandable way every phase of photography that the amateur is likely to be interested in, such as various methods of making exposures, developing, printing, enlarging, coloring; lantern slide making, etc. Profusely illustrated.

EASTMAN KODAK COMPANY
At your dealer's ROCHESTER, N. Y.

SERVICE DEPARTMENT

ADDITIONAL ASSISTANCE FOR
MAKING BETTER PICTURES

ALTHOUGH we give in this manual the essential directions for using the camera it accompanies, there are amateurs who wish for further knowledge of photography.

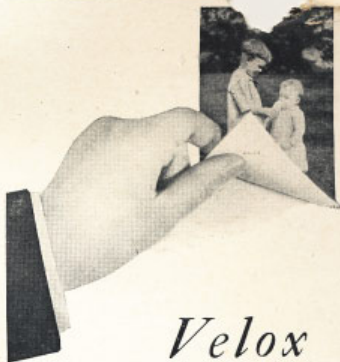
The Service Department is at their service, *your service*.

Do not hesitate to call on us for information on any photographic subject.

*We are at your service, write
to us—there is no charge,
no obligation.*

Address all Communications

SERVICE DEPARTMENT
EASTMAN KODAK COMPANY
ROCHESTER, N. Y., U.S.A.



*Velox
now identifiable*

TO protect Kodak amateurs, and to protect Developing and Printing houses that endeavor to give their customers the best possible results, we have made Velox paper identifiable. The trade name "Velox" is printed, faintly, on the back of every sheet. Look for it.

Insist on Velox—the paper that exactly meets the requirements of amateur negatives—and know you're getting the best results possible from your films.

The Velox Book tells the working of a simple paper in simple terms—a valuable photographic help. Free from us or your dealer.

EASTMAN KODAK COMPANY
ROCHESTER, N. Y.

*"If it isn't an Eastman,
it isn't a Kodak."*